



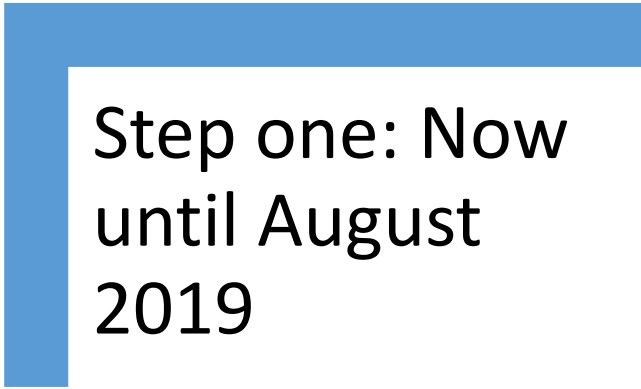
# Greater Norwich Homelessness Forum

UPDATE: Greater Norwich homelessness review

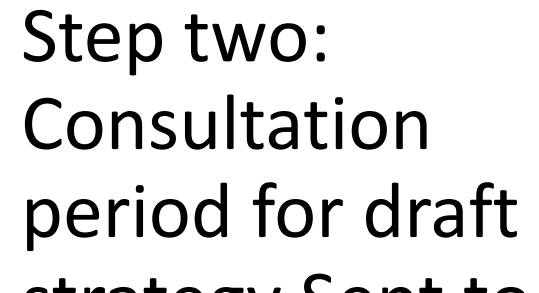
The three steps to produce the new homelessness strategy in early 2020.



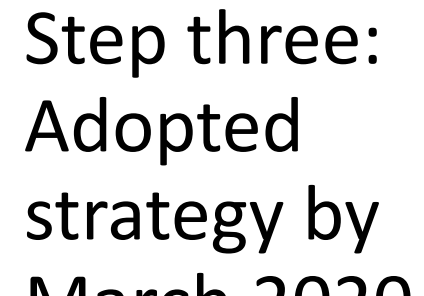
# Important dates to remember



Step one: Now  
until August  
2019



Step two:  
Consultation  
period for draft  
strategy Sept to  
Nov 19



Step three:  
Adopted  
strategy by  
March 2020

# Step one Purpose of the homelessness review

Determine the extent to which the population in the district is homeless or is at risk.

Assess the likely extent in the future.

Identify what is being done (and by whom) to prevent/relieve homelessness.

And to identify what resources are available....such as support, accommodation and prevention.

The resources available to the housing authority, the social services authority for the districts, other public authorities, and voluntary organisations.

# H-CLIC background

“For decades, the P1E form has been used to collect household data aggregated at local authority level. This has been used to report on the performance of local authorities under statutory homeless legislation and their prevention and relief activity through DCLG’s quarterly statutory homelessness statistics publication. The 2017 Act introduces new statutory duties for local authorities so the P1E collection will no longer be fit for purpose. P1E will be replaced by H-CLIC (FAQs, H-CLIC, MHCLG, 13/12/2017).”

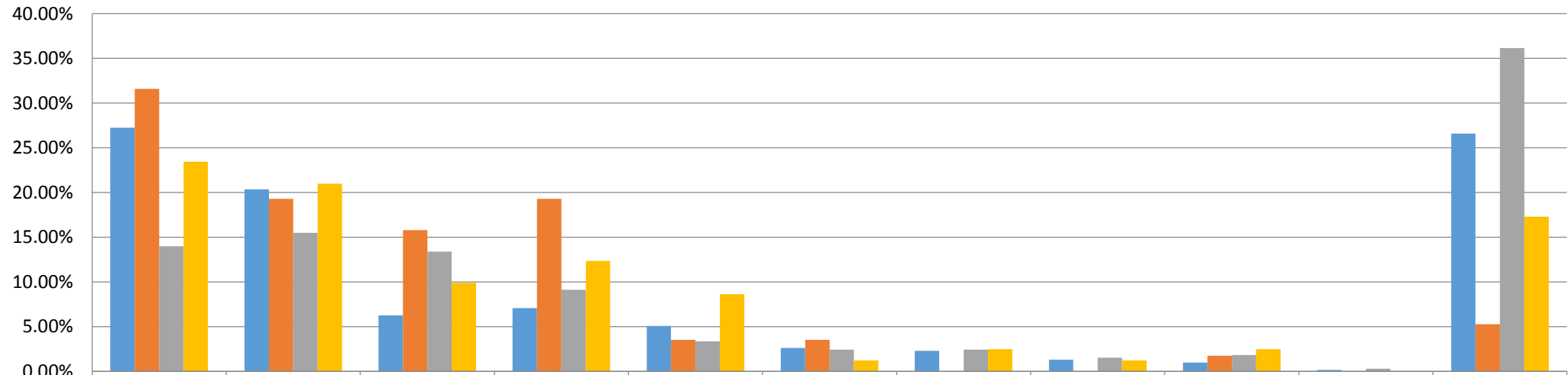
# Data, approach with caution.....

- This is the first year's (experimental) data and all local housing authorities are still getting used to it
- There are glitches and improvements still need to be made to ensure data is accurate (action for strategy)

# How we compare? Snapshot Q3 2018/19

Area	Not threatened with homelessness	Threatened with homeless (inc PRS households)	Relief duty owed (Already homeless)
East of England	9%	51%	40%
Broadland	0	53%	47%
Norwich	17%	51%	32%
South Norfolk	6%	57%	37%

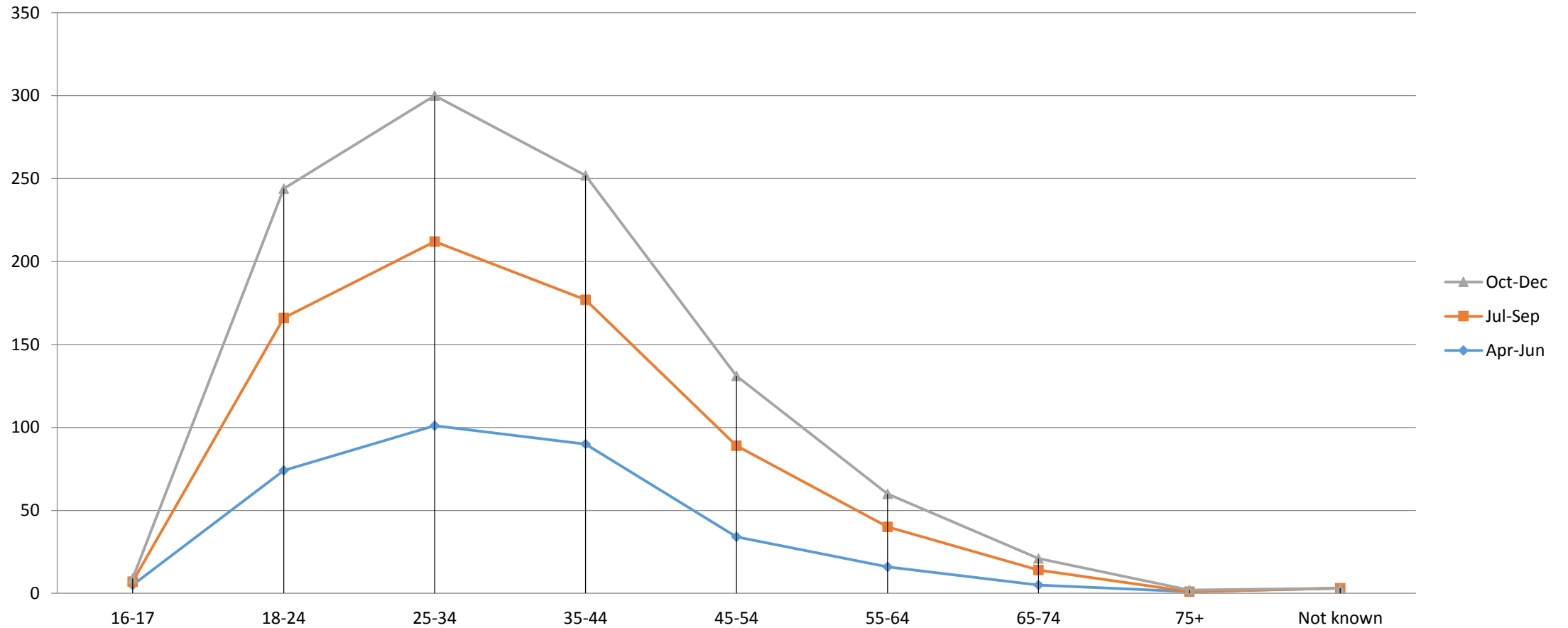
# Reason for homelessness for households owed a duty Q1 2018/19



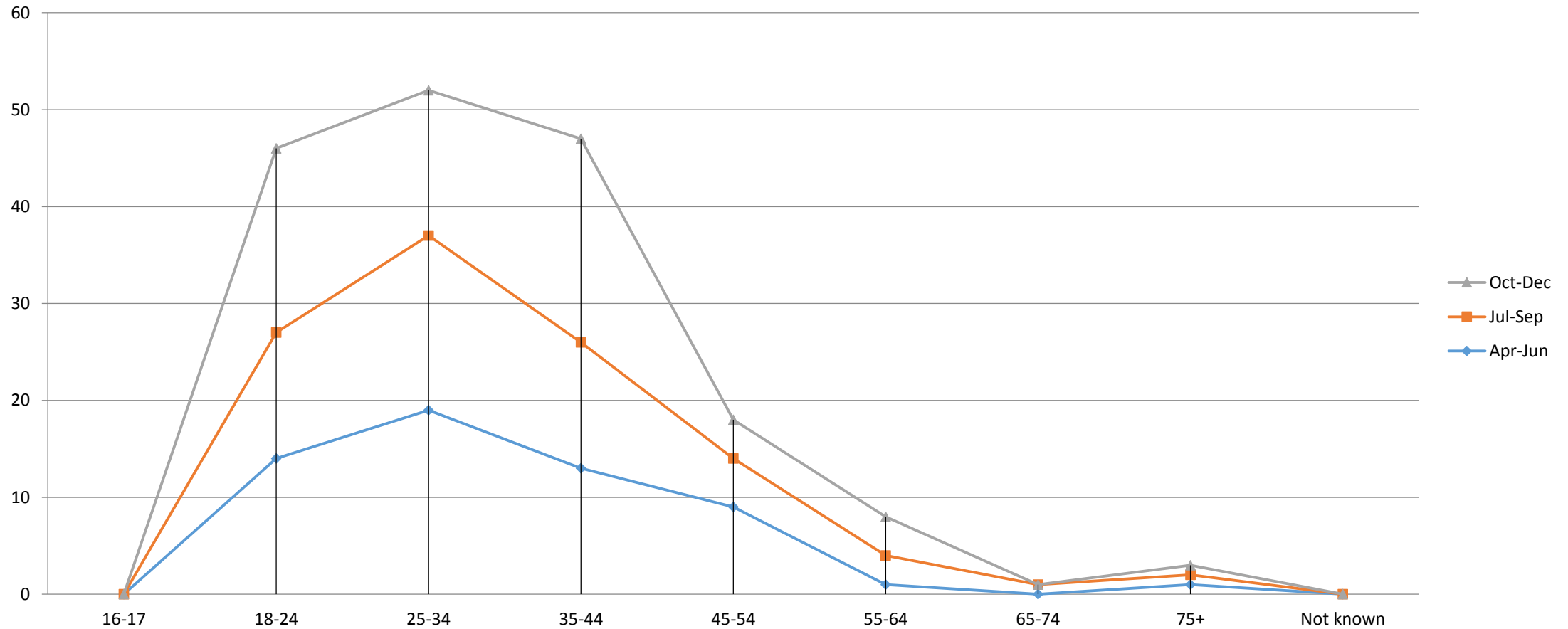
	End of private rented tenancy - assured shorthold	Family or friends no longer willing or able to accommodate	Domestic abuse	Non-violent relationship breakdown with partner	End of social rented tenancy	Eviction from supported housing	End of private rented tenancy - not assured shorthold	Other violence or harrassment	Left institution with no accommodation available	Required to leave accommodation provided by Home Office as asylum support	Other reasons / not known
■ East of England	27.26%	20.36%	6.24%	7.06%	5.09%	2.63%	2.30%	1.31%	0.99%	0.16%	26.60%
■ Broadland	31.58%	19.30%	15.79%	19.30%	3.51%	3.51%	0.00%	0.00%	1.75%	0.00%	5.26%
■ Norwich	13.98%	15.50%	13.37%	9.12%	3.34%	2.43%	2.43%	1.52%	1.82%	0.30%	36.17%
■ South Norfolk	23.46%	20.99%	9.88%	12.35%	8.64%	1.23%	2.47%	1.23%	2.47%	0.00%	17.28%



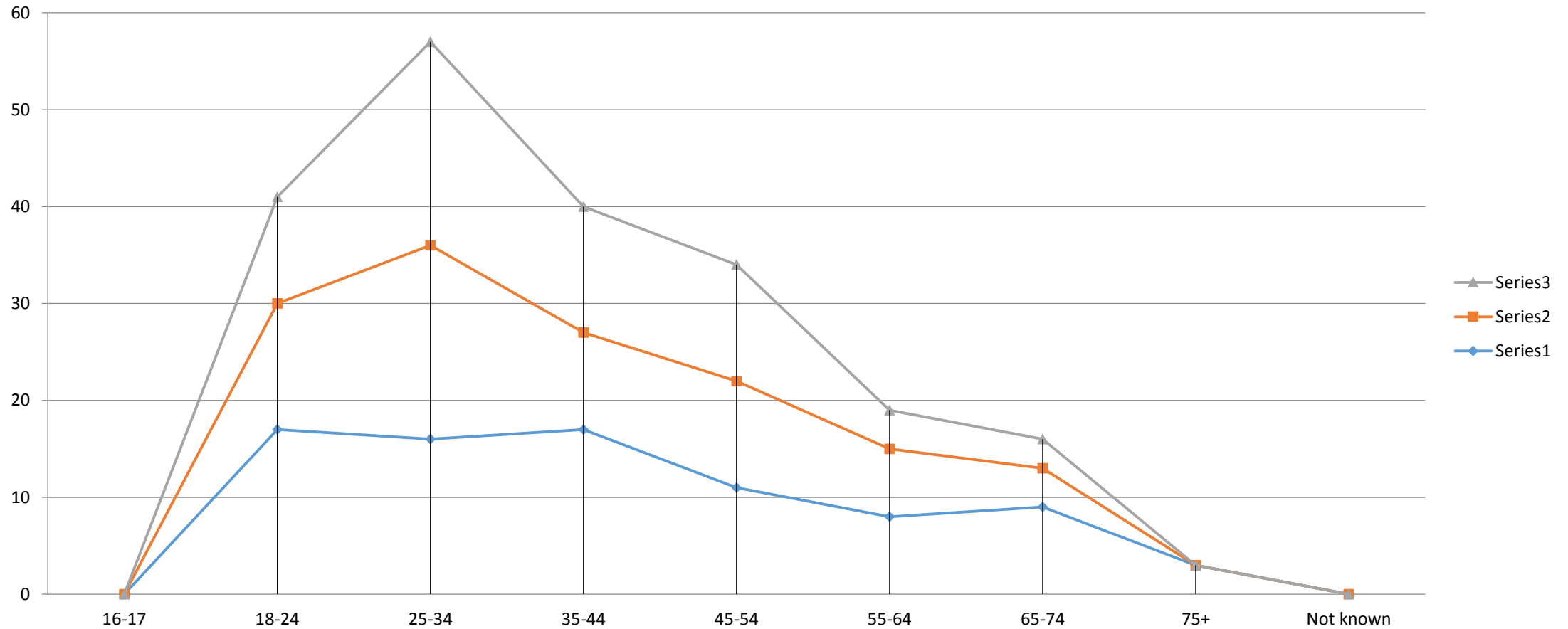
# Age profile of main applicants: Norwich (Q1-Q3)



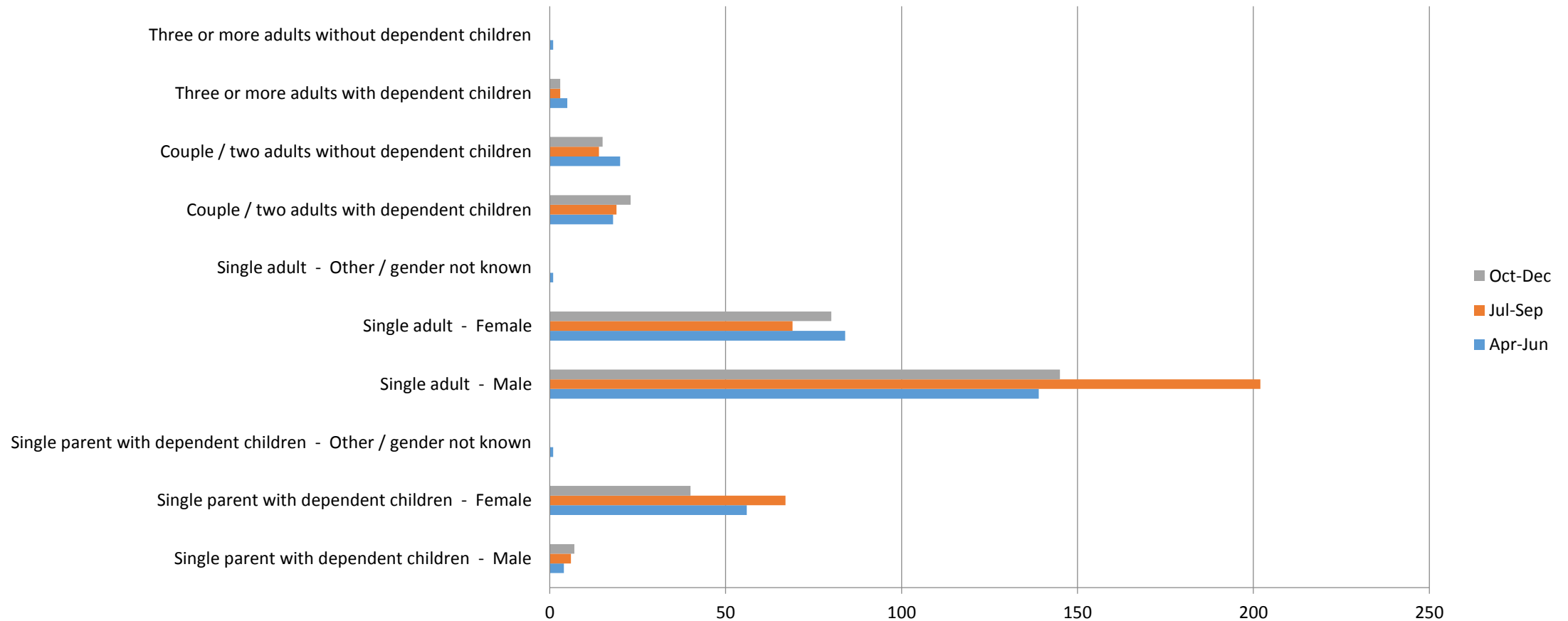
# Age profile of main applicants: Broadland (Q1-Q3)



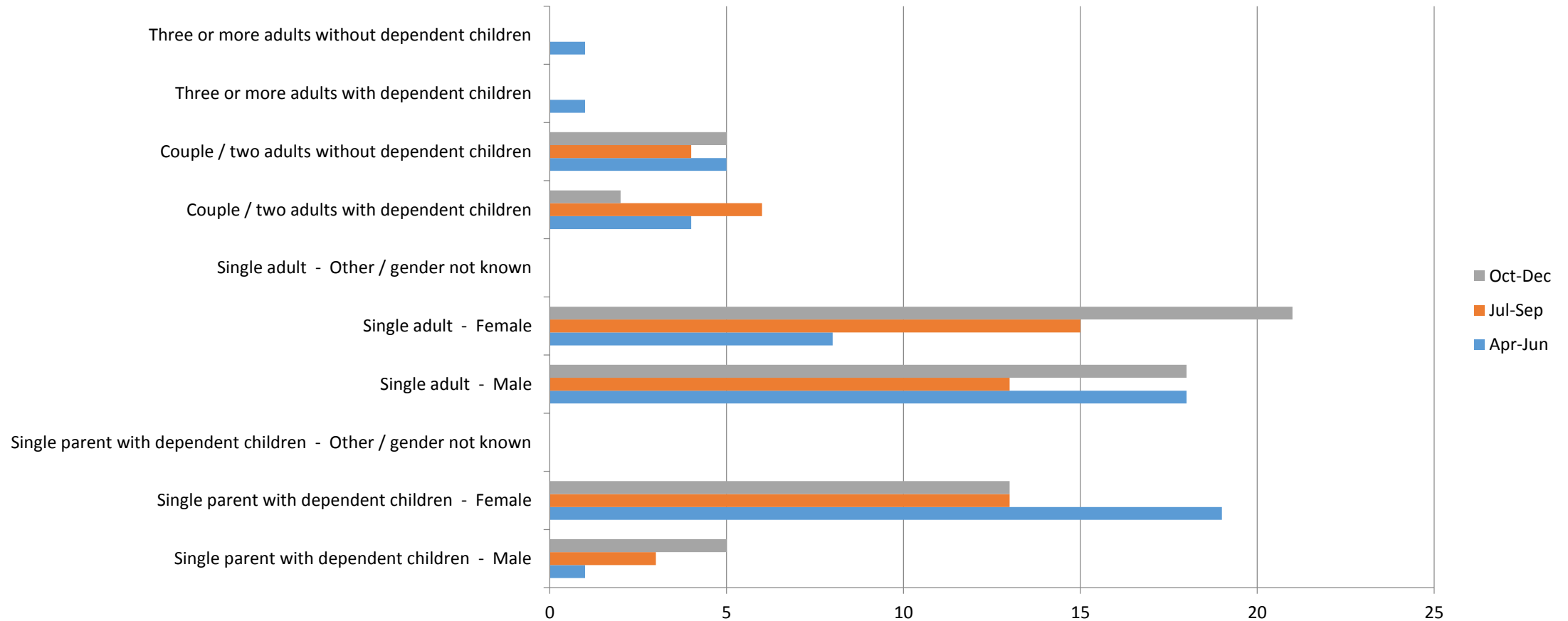
# Age profile of main applicants: South Norfolk (Q1-Q3)



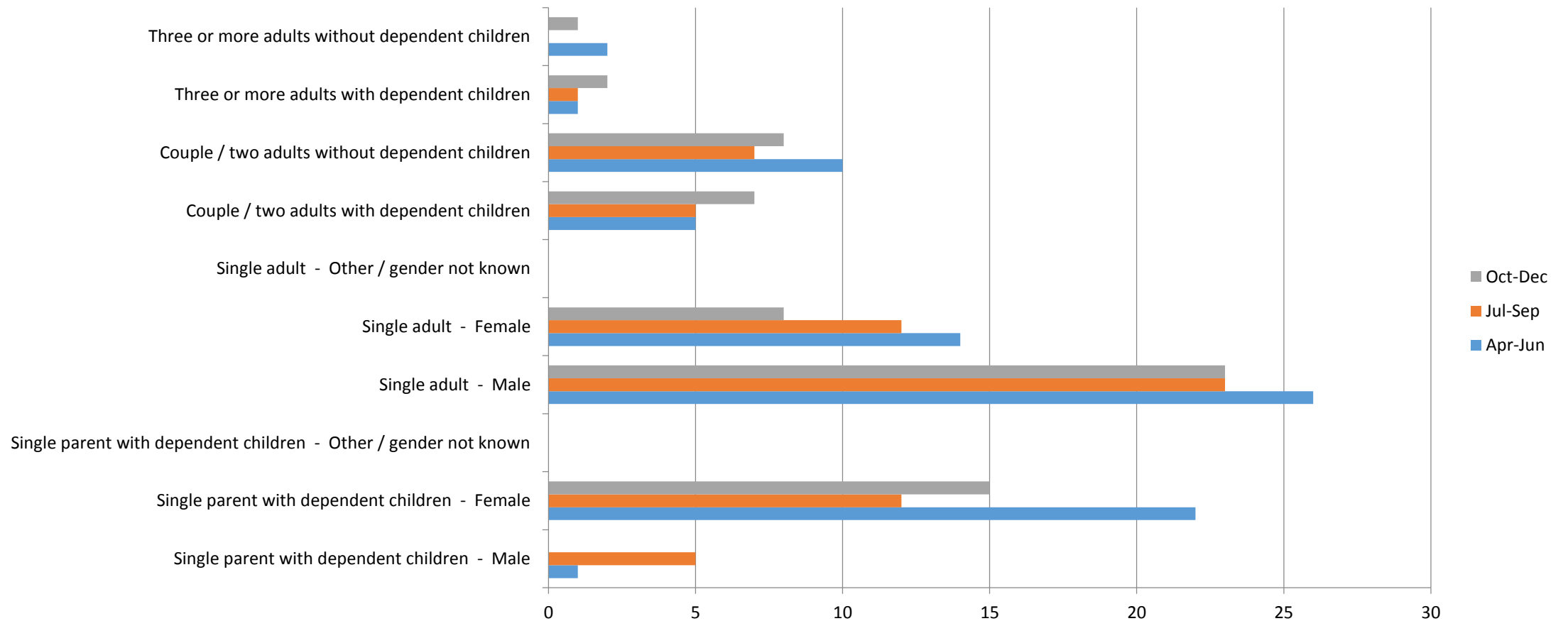
# Household type owed prevention or relief duty: Norwich (Q1-Q3)



# Household type owed prevention or relief duty: Broadland (Q1-Q3)



# Household type owed prevention or relief duty: South Norfolk (Q1-Q3)



# Reason for households prevention duty ending Q2

