



Historic England

TOWN AND COUNTRY PLANNING ACT 1990 - SECTION 77 AND TOWN AND COUNTRY
PLANNING (INQUIRIES PROCEDURE) (ENGLAND) RULES 2000

John Neale MA IHBC

PROOF OF EVIDENCE ON BEHALF OF THE HISTORIC BUILDINGS AND MONUMENTS
COMMISSION FOR ENGLAND (HISTORIC ENGLAND)

HE1/4 APPENDIX 3: Artistic Representations of Norwich

Application for planning permission for the comprehensive redevelopment of Anglia Square and adjacent land on Edward Street for up to 1250 dwellings, hotel, ground floor retail and commercial floorspace, cinema, multi-storey car parks, place of worship and associated works to the highway and public realm areas, Anglia Square, Norwich, by Weston Homes PLC.

Local Planning Authority Application reference: 18/00330/F

PINS reference: APP/G2625/V/19/3225505

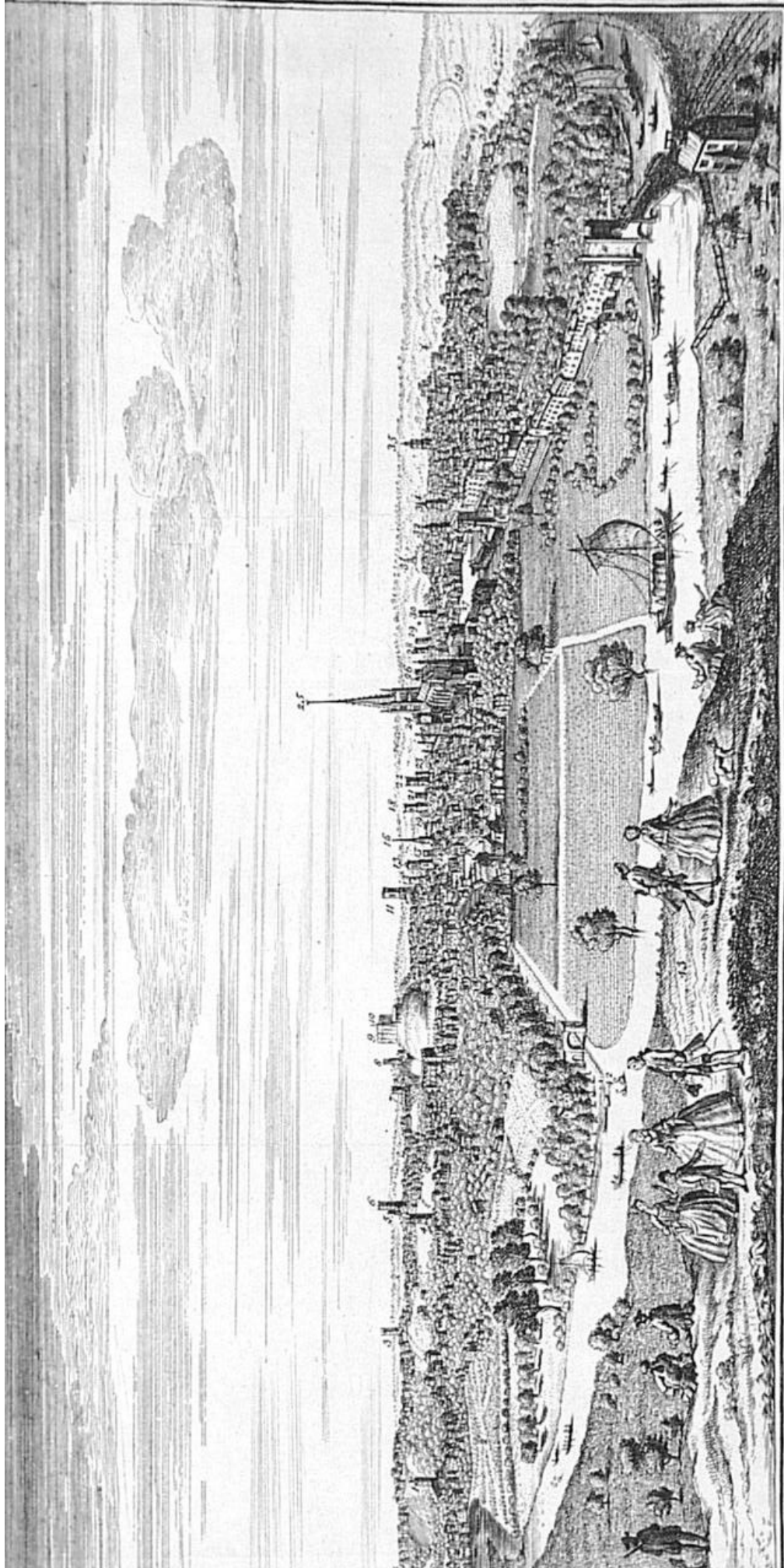
[THIS PAGE INTENTIONALLY BLANK]

HE1/4

APPENDIX 3: ARTISTIC REPRESENTATIONS OF NORWICH

- Item 1 Norfolk Museums Service, *The North East Prospect of the City of Norwich. Samuel and Nathaniel Buck, 1783*
- Item 2 Norfolk Museums Service, *View of Norwich, Dutch School, c1700s*
- Item 3 Norfolk Museums Service, *East View of the City of Norwich, G F Robson, 1826*
- Item 4 Norfolk Museums Service, *Norwich from Crown Point, Thomas Lound 1802-1861*
- Item 5 Norfolk Museums Service, *South East View of the City of Norwich, December 1st 1846, Thomas Lound 1802-1861*
- Item 6 GAC 9440, Unknown Artist – British 19th Century, *View of Norwich*
- Item 7 Private Collection. *Norwich from Mousehold Heath, Haslehurst, E.W. (1866-1949)*
- Item 8 Norfolk Museums Service, *View of Norwich from the Bungay Road, John Alfred Arnesby Brown 1866-1955*
- Item 9 Norfolk Museums Service, Kings Lynn Museum. *Norwich from Mousehold, Walter Dexter 1896 -1958*
- Item 10 Private Collection. *Norwich Castle, 1935, Charles Hobbis*
- Item 11 Private Collection. *Norwich, c.1940, Charles Ginner*

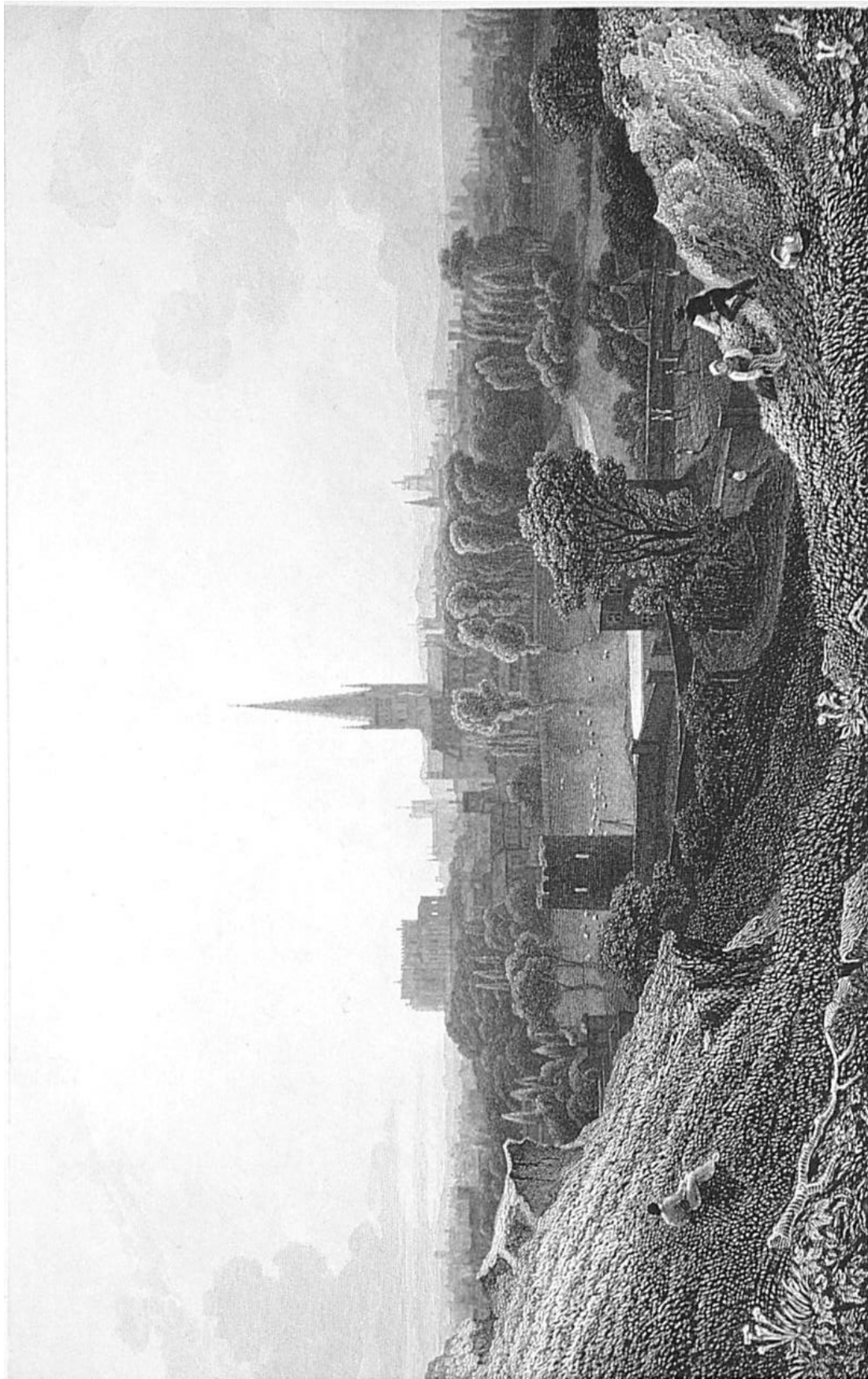
[THIS PAGE INTENTIONALLY BLANK]



Norfolk Museums Service (Norwich Castle Museum & Art Gallery), *The North East Prospect of the City of Norwich*. Samuel and Nathaniel Buck, 1783. NWHCM 1954.138.Todd5.Norwich.33



Norfolk Museums Service, (Norwich Castle Museum & Art Gallery) *View of Norwich*, Dutch School, c1700s.
NWHCM:1967.341



F. Robson del.

J. C. Verrall sc.

EAST VIEW OF

THE CITY OF NORWICH.

TO CHARLES TOMPSON ESQ^r an admirer & patron of ENGRAVED LITERATURE.

This plate is inscribed by THE EDITOR.

London, Published by J. Britton, Burton Street, May 15, 1816.



Norfolk Museums Service, (Norwich Castle Museum & Art Gallery) *Norwich from Crown Point, Thomas Lound 1802-1861*. NWHCM:1957.357



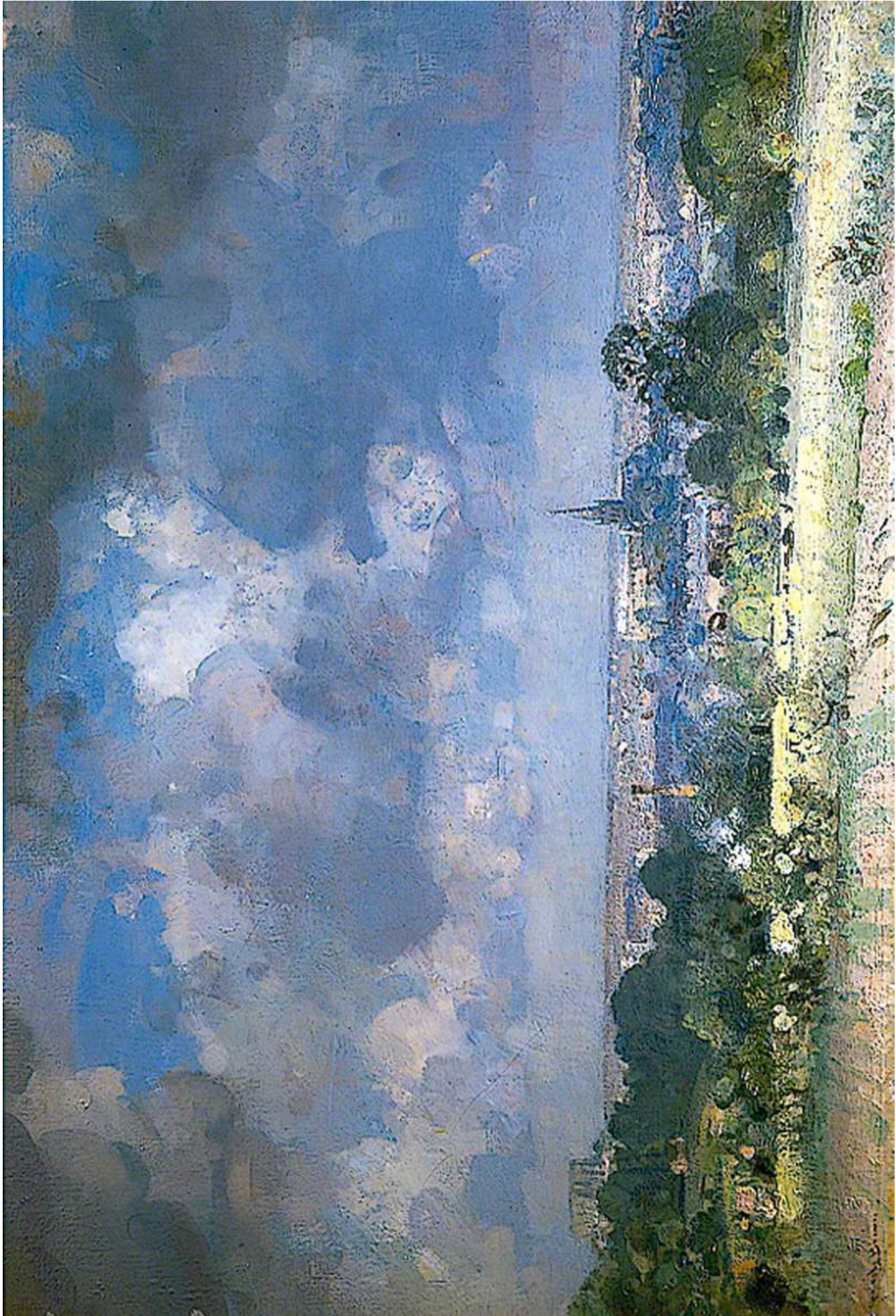
Norfolk Museums Service (Norwich Castle Museum & Art Gallery), *South East View of the City of Norwich, December 1st 1846*, Thomas Lound 1802-1861.
WHCM:2008.288



GAC 9440, Unknown Artist – British 19th Century, *View of Norwich*. © Image; Crown Copyright: UK Government Art Collection



Norwich from Mousehold Heath, Haslehurst, E.W. (1866-1949) / Private Collection. © Look and Learn / Bridgeman Images



Norfolk Museums Service (Norwich Castle Museum & Art Gallery), *View of Norwich from the Bungay Road*, John Alfred Arnesby Brown 1866-1955. NWHCM:1945.1



Norfolk Museums Service, Kings Lynn Museum. *Norwich from Mousehold, Walter Dexter 1896 -1958. KILLM:1991.489.1*

ENGLAND



NORWICH CASTLE

Printed in England.

Page Brothers (Norwich) Ltd.



Norwich Castle, 1935, Hobbis, Charles / Private Collection. © Christie's Images / Bridgeman Images



NORWICH

IT'S QUICKER BY RAIL

ILLUSTRATED BOOKLET FROM PUBLICITY ASSOCIATION
NORWICH OR ANY LMS OR L.N.E.R. STATION OR AGENCY

JARROLD & SONS LTD. NORWICH & LONDON

PRINTED IN ENGLAND

Published by the LONDON & NORTH EASTERN RAILWAY

Norwich, c.1940, Ginner, Charles / Private Collection. © Christie's Images / Bridgeman Images

[THIS PAGE INTENTIONALLY BLANK]