

NORWICH OPEN SPACE NEEDS ASSESSMENT

PART 2

AREA PROFILES



SUB AREA 1 WEST

CONTENTS

Page (s)

Introduction

Map of Sub Area

Description of Sub Area

Quantity of open space

Access to open space

Quality of open space

Strategic Priorities 6
3

Database 7

8

10

12

13

14

INTRODUCTION

Area profiles

These area profiles form part of a larger study of open space and recreation facilities in Norwich City, using guidance provided under 'PPG 17', and should be read in context with the overall findings of the study (see Part 1).

The profiles give detail at a local level in relation to the provision of open space and recreational facilities by sub area.

Four sub areas have been identified across the City. Each sub area has been analysed using the proposed Norwich standards for open space, outlined in Part 1 of the report. The profiles include the following information:

- Relevant census data and other information about the area. This is important when considering the current and future needs of the population for open space provision
- Location and types of open space
- Quantity of open space
- Access to open space
- Quality of open space
- Strategic priorities for open space.

Typology

Part 1 of the report identifies the range of typologies for open space and sport and recreation facilities for which standards have been developed as follows:

- Parks and Gardens
- Natural and semi natural green space
- Green corridors
- Outdoor sports facilities and 'recreation grounds'
- Informal/amenity open space
- Provision for children and young people
- Allotment and community gardens
- Important indoor sports facilities

- Community halls

Quantity of open space

The quantity of open space in each sub area has been assessed against a standard for each typology recommended in Part 1 of the study as follows:

- | | |
|--|-------------------------|
| • Parks and Gardens | 0.62 ha per 1000 people |
| • Natural and semi natural green space (including green corridors) | 2.46 ha per 1000 people |
| • Informal/amenity open space | 1.0 ha per 1000 people |
| • Provision for children and young people | 0.16 ha per 1000 people |
| • Outdoor sports facilities and 'recreation grounds' | 1.01 ha per 1000 people |
| • Allotment and community gardens | 0.44 ha per 1000 people |

These standards have been applied at a local level to determine the provision of different types of open space across the adopted minimum standard, this is summarised in each profile, showing:

- the existing quantity of open space (existing provision)
- the required quantity of open space for the population of the area (required provision)
- the surplus or deficiency of open space
- Supply against the standard.

This is expressed as actual quantities of provision in hectares, and as provision per 1000 of the population, as hectares,

Quality of open space

The quality audit criteria have been built upon guidance provided in the 'PPG 17 companion guide', including criteria used as part of Green Flag, 'Raising the standard', Sport England's 'Towards a Level Playing Field.' Sites were given a generic assessment against a range of criteria (set out in Part 1). For all categories scores were given in relation to the maximum available for that category and are expressed as percentages.

Access to open space

Access to open space in each sub area has been assessed against a standard for each typology recommended in Part 1 of the study as follows:

- Parks and Gardens
- Within 900m (larger parks), 600m pocket parks

- | | |
|--|--|
| • Natural and semi natural green space (including green corridors) | Within 600m |
| • Informal/amenity open space | Within 100m |
| • Provision for children and young people | Within 240m (young people), 720m (teenagers) |
| • Outdoor sports facilities and 'recreation grounds' | Within 3 kms |
| • Allotment and community gardens | Within 600m |

For each Sub Area, the following is shown in relation to access to open space:

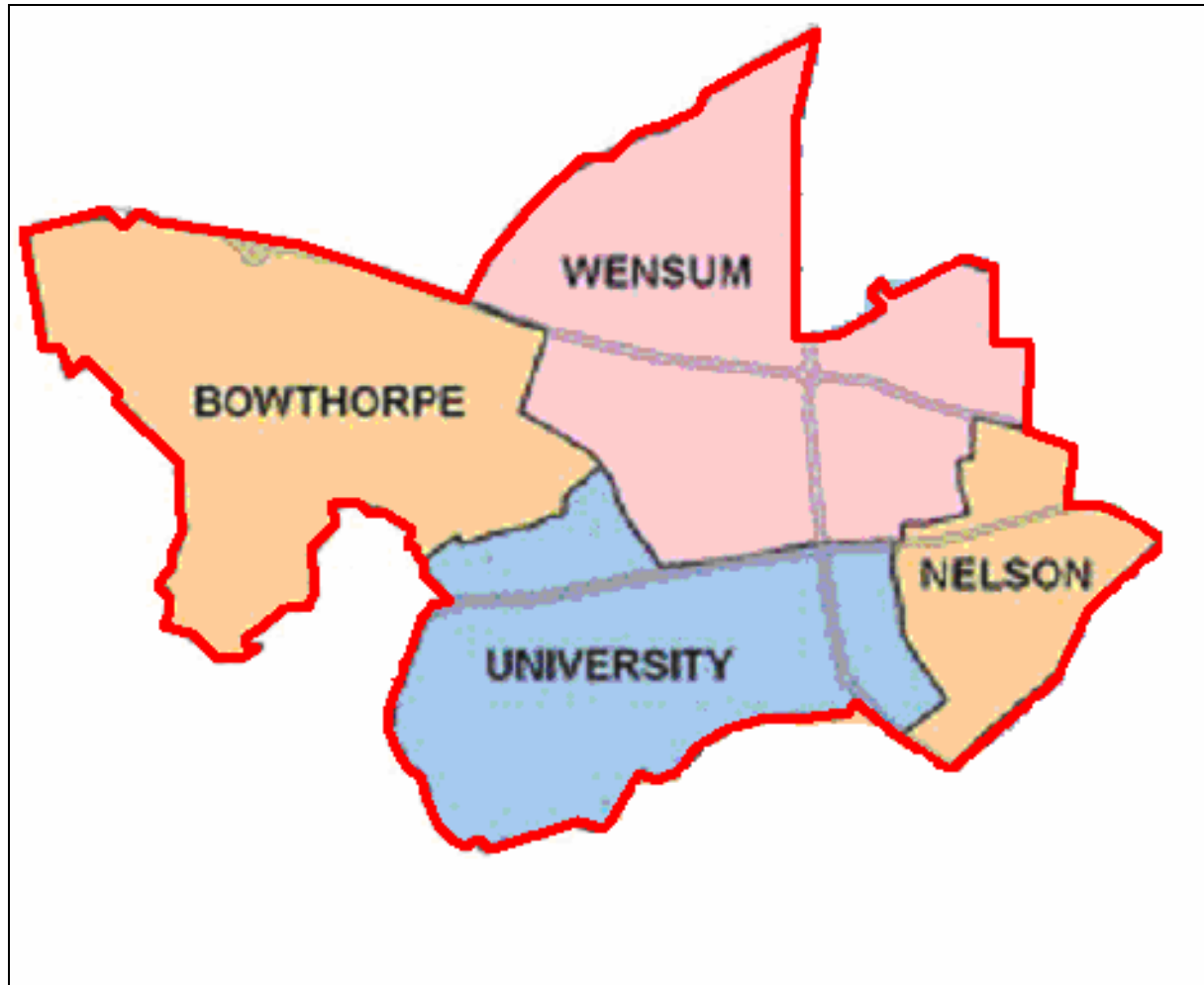
- a map showing access to the different types of open space against the access standards outlined above (not all open space is mapped to avoid unnecessary detail)
- observations related to access to each typology.

Using the database

The database that has been developed as part of the audit allows information to be interpreted in many ways, and it is specifically designed to be a 'working tool', which can be used for specific enquiries related to the provision and quality of open space as and when required.

These enquiries may be in the form of planning enquiries, for example to determine where developer contributions from a new development would be best directed in the area; or, they may help inform open space management decisions and priorities, for example determining where funding should be targeted or areas of open space which are in most need of improving.

MAP OF SUB AREA



DESCRIPTION OF WEST SUB AREA

Location

The west sub area comprises the wards of Bowthorpe, University, Wensum and Nelson. Bowthorpe includes an urban extension to Norwich started in the 1970s and yet to be completed, as well as West Earlham with predominantly inter-war housing. The Bowthorpe ward has good access to the valley of the River Wensum and the surrounding countryside. Wensum includes much of the North Earlham, Larkman and Marlpit local authority housing estates, together with mainly Victorian terraced areas nearer the city centre and employment land off Sweet Briar Road. University ward includes UEA and extensive areas of green space to the west, and a mixture of social and private housing alongside the outer ring road. Nelson is a small ward of mainly private high-density Victorian terraced housing adjoining the city centre with little open space.

Population

The population of the wards in this sub area are as follows:

- Bowthorpe 11090
- Nelson
- University 9960
- Wensum 11230
- Total

10020

42300

QUANTITY OF OPEN SPACE

Set against the minimum recommended standards of provision, there is sufficient open space in total to meet the needs of the west area. The minimum requirement overall for 241 ha is easily met, and there is a balance of 76 ha above this. However if private land is excluded, there is a minor shortfall of open space overall.

In terms of the individual typologies the following apply

- There are adequate parks and gardens in the area, including three large parks and two further smaller areas with public access.
- There is more than sufficient natural and semi natural green space, though if land in private ownership is excluded, provision is only just adequate. However much of this is 'private' land is at UEA where there is permitted access by the wider community.
- Informal amenity open space is also easily adequate. Earlham cemetery contributes almost half of the total informal amenity open space in this area. If land in private ownership is excluded there is still adequate open space.
- Play provision only meets about half of the proposed minimum standard.
- There is a minor shortfall of new allotments, to meet the proposed higher standard, though existing provision is more than the current average in Norwich
- There is a major deficiency of outdoor sports space – current provision only meets 30% of the proposed standard. There is an opportunity to use pitches outside the city boundary and UEA/Colney Lane.
- There are 30 ha of school grounds on 21 sites, which could be used to reduce some of the above shortfalls particularly for sports pitches.

| WEST - Bowthorpe, University, Wensum & Nelson, population 42,300 | Number of sites | Existing quantity (ha) | Existing quantity (ha/1000) | Required quantity (ha) | Required quantity (ha/1000) | Balance (ha) | Balance (ha/1000) | Supply |
|---|------------------------|-------------------------------|------------------------------------|-------------------------------|------------------------------------|---------------------|--------------------------|-----------------|
| Parks & Gardens | 5 | 43.56 | 1.03 | 26.23 | 0.62 | 17.33 | 0.41 | Adequate |
| Natural/semi natural green space – total* | 48 | 170.98 | 4.04 | 104.06 | 2.46 | 66.92 | 1.58 | Adequate |
| Informal amenity open space – total** | 66 | 70.11 | 1.66 | 42.30 | 1.00 | 27.81 | 0.66 | Adequate |
| Play provision - total | 34 | 4.23 | 0.10 | 7.61 | 0.18 | -3.38 | -0.08 | Shortfall |
| Allotments | 5 | 16.65 | 0.39 | 18.61 | 0.44 | -1.96 | -0.05 | Shortfall |
| Outdoor sports facilities | 7 | 12.43 | 0.29 | 42.72 | 1.01 | -30.29 | -0.72 | Shortfall |
| TOTAL | 165 | 317.96 | 7.52 | 241.53 | 5.71 | 76.43 | 1.81 | Adequate |

* Natural/semi natural green space public 38 97.48

* Natural/semi natural green space private 7 61.46

* Green corridors 3 12.04

**Churchyards & cemeteries 2 34.10

**Informal amenity open space public 53 18.00

**Informal amenity open space private 11 18.01

School grounds 21 30.35

ACCESS TO OPEN SPACE

An assessment has been made of the accessibility of residents of this sub area to a range of more local facilities. Accessibility to strategic facilities, such as sports halls and swimming pools and larger parks and gardens is dealt with in Part 1.

In general, accessibility in this sub area is relatively restricted, particularly in Town Close ward where there is an abundance of higher density housing.

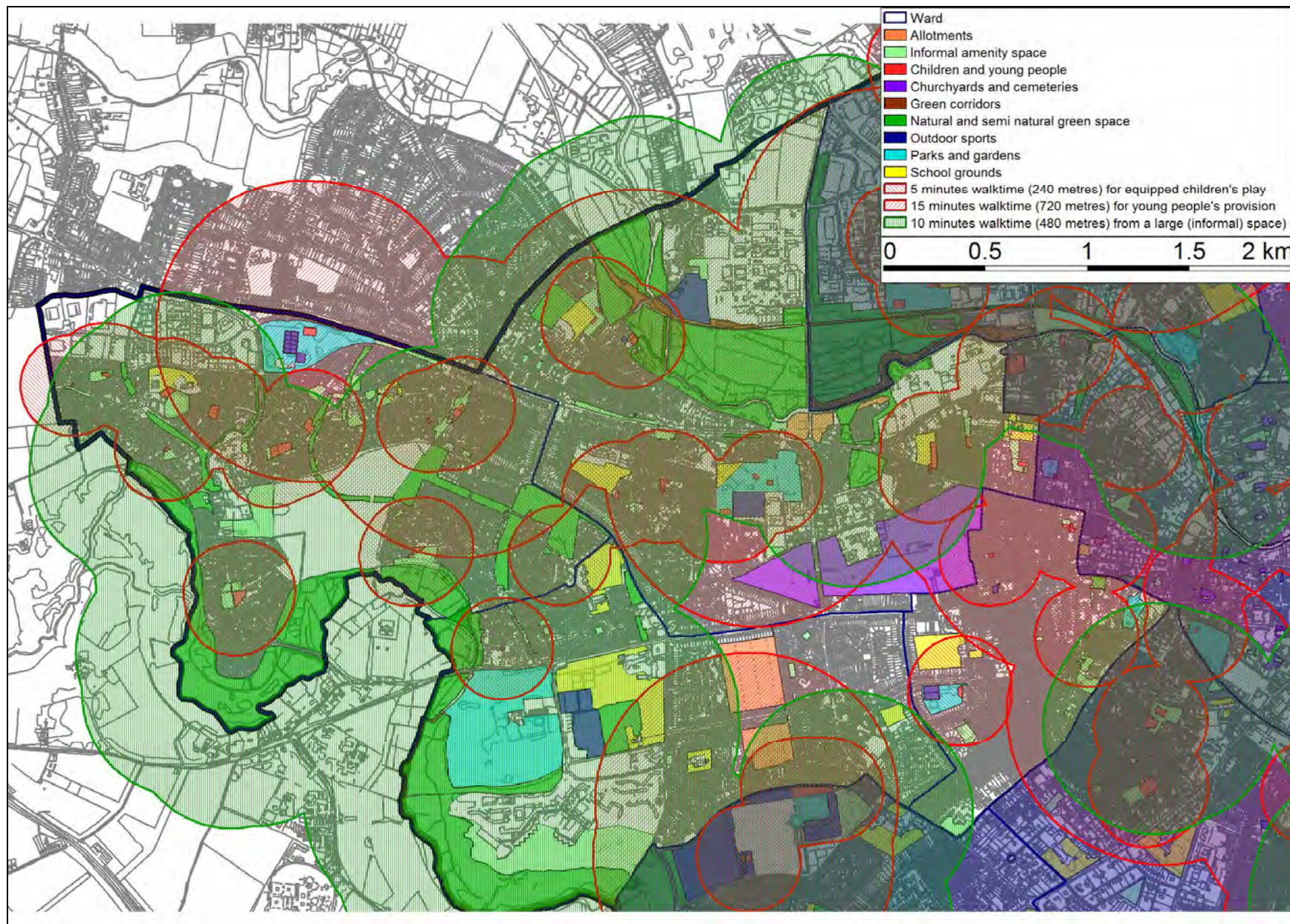
Most of the sub area is within a reasonable walking catchment of informal open space, but there are parts of Nelson and University wards (where housing densities are high) where access is poorer.

Access to children's play facilities is similar to much of the rest of the city where there are significant areas outside the 5 minute catchment for younger children, and the wider catchment for teenagers.

The availability of outdoor sports space is restricted mainly to UEA and some private facilities, though there is good access to pitches on Colney Lane outside the city. Walking access to outdoor sport is therefore limited in the east of this sub area.

Access to allotments within reasonable walking time is generally good in the University ward but more difficult elsewhere.

The proximity of the river valleys gives good access to large areas of natural and semi natural green space, and to the wider countryside.



QUALITY OF OPEN SPACE

The overall quality of open space in the West sub area is lower than the Norwich average. In particular:

- Parks and gardens are of a higher than average quality, and in particular Heigham Park and Plantation Gardens (which is private)
- Natural and semi natural green space is poorer than average, with Bevan Close in Bowthorpe scoring the lowest of all such open spaces in Norwich, and other poor areas including Three Score Tree Belt and Wendene Tree Belt in Bowthorpe. Blackdale Plantation is the best public natural green space and The Willows (Dereham Road) the best private green space./ Green corridors generally score higher than other areas of natural green space.
- Informal amenity open space is poorer than the city average, with Bowthorpe Cycleway and Drury Close (Bowthorpe) the worst public open spaces and George Borrow Road the worst private lane. Taylor Road, Belvoir Street and some private spaces score very highly. Earham Cemetery, the only churchyard or cemetery in the area is considered to be of high quality.
- Play provision is generally of a high quality though slightly below the city average. All the teenage facilities score highly and many children's play areas. Wensum Community Centre play area has the lowest score.
- Allotments rate at exactly the city average. Bellacre is the best site and Sycamore Crescent the poorest.
- Outdoor sports facilities are above average, in particular the private facilities at UEA and the Mitre PH, and at Heigham Park. Bowthorpe Park and the Bayer Sports Ground are considered the poorest sports facilities. The quality of ancillary and changing facilities was only scored for NCC facilities.

| | Sub area average | Norwich average |
|--|------------------|-----------------|
| Parks and gardens | 76.1% | 70.9% |
| Natural and semi natural green space | 56.9% | 61.1% |
| Informal amenity open space | 66.4% | 69.2% |
| Play provision for children and young people | 74.0% | 77.3% |
| Allotments | 68.3% | 68.3% |
| Outdoor sports facilities and 'recreation grounds' | 77.0% | 73.1% |
| Total | 64.5% | 68.6% |

STRATEGIC PRIORITIES

- There is adequate open space overall in the West sub area to meet the recommended standard of open space provision, and in particular parks and gardens, natural and semi natural green space and informal amenity open space is well provided for. However some of the latter is in private ownership, and public access may be constrained. All open space that meets a community need should be retained, and the provision of additional open space in line with the recommended minimum standard should be made.
- There is a small shortfall in the provision of allotments, which should be made up in conjunction with new development to meet the recommended higher standard of provision.
- There is a major shortfall of play provision for children and young people and for outdoor sport, and these need to be addressed as part of any new development. Additional play provision should be made in areas local to new housing and in areas of lowest provision. Outdoor sport requires, in most cases, larger areas of land, and the solution to the existing shortage may lie more in the qualitative improvement of existing sites, including changing facilities, which can increase the capacity of playing areas, as well as seeking to bring into secured community use existing school pitches, courts and greens where this is appropriate than in new provision.
- The quality of open space in this area is generally below average although parks and gardens and outdoor sports areas are good. Future priorities should include qualitative improvements to natural green space and informal amenity open space, where these are considered desirable in the accompanying database below. This might include a whole range of enhancements to access, particularly for the disabled, signage, biodiversity, tree cover, or any of the factors scored in the assessment. Some play areas also require improvement.
- While there is only adequate open space in this area there may be circumstances where the disposal of areas of open space with poor quality and low value for the community might be redeveloped for other purposes where this might be of overall benefit to open space.
- The disposal of open space after the closure and rationalisation of schools in this area (e.g. at Blackdale School) should carefully consider the overall requirements for open space, and give priority to an alternative open space use in accordance with PPG17 before being considered for redevelopment for other uses.

DATABASE

| URL | Ha | LOCATION | WARD | CATEGORY | Quality % |
|-----|-------|---------------------------------|------------|----------------------------|-----------|
| U03 | 9.32 | BLUEBELL NORTH | University | Allotments | 66.6 |
| U05 | 4.53 | BLUEBELL SOUTH | University | Allotments | 66.6 |
| W03 | 1.28 | BELLACRE | Wensum | Allotments | 78.7 |
| W38 | 0.45 | SYCAMORE CRESCENT | Wensum | Allotments | 57.1 |
| W52 | 1.08 | WOODLANDS | Wensum | Allotments | 72.7 |
| | 16.65 | | | | 68.3 |
| B14 | 0.23 | BOWTHORPE PARK | Bowthorpe | Children and YP MUGA | |
| B38 | 0.06 | FOURWAYS | Bowthorpe | Children and YP MUGA | 81.2 |
| N03 | 0.06 | BELVOIR STREET | Nelson | Children and YP MUGA | 89.2 |
| W05 | 0.07 | BOWTHORPE SCHOOL COMMUNITY PARK | Wensum | Children and YP MUGA | 61.5 |
| W30 | 0.11 | MEADOW VIEW | Wensum | Children and YP MUGA | 71.8 |
| W47 | 0.09 | WEST END STREET | Wensum | Children and YP MUGA | 82.5 |
| W07 | 0.13 | BOWTHORPE SCHOOL COMMUNITY PARK | Wensum | Children and YP Skateboard | 76.6 |
| W23 | 0.04 | MARLPIT LANE OPEN SPACE | Wensum | Children and YP Skateboard | 77.2 |
| | 0.80 | | | | |
| B01 | 0.28 | ASTLEY ROAD | Bowthorpe | Children and YP Play | 79.5 |
| B03 | 0.09 | ATKINSON CLOSE | Bowthorpe | Children and YP Play | 72.7 |
| B04 | 0.03 | BENDISH WAY | Bowthorpe | Children and YP Play | 58.1 |
| B09 | 0.50 | BOWTHORPE CYCLE WAY | Bowthorpe | Children and YP Play | 87.2 |
| B20 | 0.25 | CHAPEL BREAK VILLAGE CENTRE | Bowthorpe | Children and YP Play | 75.0 |
| B36 | 0.01 | ENFIELD ROAD | Bowthorpe | Children and YP Play | 92.3 |
| B39 | 0.20 | FOURWAYS | Bowthorpe | Children and YP Play | 82.3 |
| B42 | 0.02 | JAY GARDENS | Bowthorpe | Children and YP Play | 71.4 |
| B47 | 0.33 | RUNNELL (THE) | Bowthorpe | Children and YP Play | 65.9 |
| B48 | 0.04 | SMEAT STREET | Bowthorpe | Children and YP Play | 59.5 |

| | | | | | |
|------|-------|---|------------------|---------------------------------|------|
| B54 | 0.25 | STYLEMAN ROAD | Bowthorpe | Children and YP Play | 59.5 |
| B57 | 0.01 | THURLBY ROAD | Bowthorpe | Children and YP Play | 80.0 |
| B65 | 0.16 | WILBERFORCE ROAD | Bowthorpe | Children and YP Play | 63.8 |
| N05 | 0.09 | BELVOIR STREET | Nelson | Children and YP Play | 62.5 |
| N06 | 0.03 | CLARENDON STEPS | Nelson | Children and YP Play | 79.0 |
| N08 | 0.04 | EDINBURGH ROAD | Nelson | Children and YP Play | 59.5 |
| N11 | 0.11 | HEIGHAM PARK | Nelson | Children and YP Play | 92.5 |
| U21 | 0.02 | SARAH WILLIMAN CLOSE | University | Children and YP Play | 72.5 |
| W06 | 0.06 | BOWTHORPE SCHOOL COMMUNITY PARK | Wensum | Children and YP Play | 90.9 |
| W08 | 0.08 | CADGE CLOSE | Wensum | Children and YP Play | 78.7 |
| W14 | 0.06 | HELLESDON MEADOW (MEADOW VIEW) | Wensum | Children and YP Play | 78.7 |
| W22 | 0.05 | MARLPIT LANE | Wensum | Children and YP Play | 82.9 |
| W37 | 0.17 | RANWORTH ROAD | Wensum | Children and YP Play | 70.6 |
| W44 | 0.09 | WENSUM COMMUNITY CENTRE | Wensum | Children and YP Play | 43.5 |
| W46 | 0.46 | WENSUM VIEW | Wensum | Children and YP Play | 59.0 |
| W49 | 0.01 | WESTEND STREET | Wensum | Children and YP Play | 82.5 |
| | 3.43 | | | | 73.1 |
| W10 | 27.17 | EARLHAM | Wensum | Churchyards & cemeteries | 77.1 |
| W10A | 6.93 | EARLHAM | Wensum | Churchyards & cemeteries | 77.1 |
| | 34.10 | | | | 77.1 |
| U29 | 9.05 | YARE VALLEY WALK | University/Eaton | Green corridors | 64.2 |
| W28 | 1.56 | MARRIOTS WAY D - SWEETBRIAR RD - HELLESDON RD | Wensum | Green corridors | 76.4 |
| W29 | 1.43 | MARRIOTS WAY E - HELLESDON RD - CITY BOUNDARY | Wensum | Green corridors | 64.7 |
| | 12.04 | | | | 68.4 |
| B02 | 0.45 | ATKINSON CLOSE | Bowthorpe | Informal amenity open space NCC | 72.5 |
| B05 | 0.21 | BENDISH WAY GREEN | Bowthorpe | Informal amenity open space NCC | 69.2 |
| B07 | 0.42 | BOWTHORPE COTTAGES | Bowthorpe | Informal amenity open space NCC | 70.3 |
| B10 | 0.12 | BOWTHORPE CYCLE WAY O/S | Bowthorpe | Informal amenity open space NCC | 48.0 |
| B11 | 0.21 | BOWTHORPE HERITAGE GARDENS | Bowthorpe | Informal amenity open space NCC | 65.2 |

| | | | | | |
|-----|------|-------------------------------|------------|---------------------------------|------|
| B16 | 0.02 | BRAITHWAITE CLOSE | Bowthorpe | Informal amenity open space NCC | 57.1 |
| B21 | 1.29 | CHAPEL BREAK VILLAGE GREEN | Bowthorpe | Informal amenity open space NCC | 63.8 |
| B24 | 0.36 | CLOVER HILL VILLAGE GREEN | Bowthorpe | Informal amenity open space NCC | 63.8 |
| B26 | 0.34 | CLOVERHILL FIRST SCHOOL | Bowthorpe | Informal amenity open space NCC | 58.1 |
| B28 | 0.16 | DRAPER WAY | Bowthorpe | Informal amenity open space NCC | 84.0 |
| B30 | 0.05 | DRURY CLOSE | Bowthorpe | Informal amenity open space NCC | 36.0 |
| B31 | 0.09 | EARLHAM GREEN LANE 1 | Bowthorpe | Informal amenity open space NCC | 50.0 |
| B32 | 0.09 | EARLHAM GREEN LANE 2 | Bowthorpe | Informal amenity open space NCC | 50.0 |
| B35 | 0.07 | ENFIELD ROAD | Bowthorpe | Informal amenity open space NCC | 56.2 |
| B40 | 0.38 | FOURWAYS OPEN SPACE | Bowthorpe | Informal amenity open space NCC | 59.3 |
| B43 | 3.62 | OLD BOWTHORPE PARK | Bowthorpe | Informal amenity open space NCC | 66.6 |
| B44 | 0.36 | RAWLEY ROAD | Bowthorpe | Informal amenity open space NCC | 71.0 |
| B45 | 0.20 | RAWLEY ROAD GREEN | Bowthorpe | Informal amenity open space NCC | 64.2 |
| B46 | 0.76 | RIMER CLOSE | Bowthorpe | Informal amenity open space NCC | 61.2 |
| B49 | 0.68 | SOUND BARRIER | Bowthorpe | Informal amenity open space NCC | 75.0 |
| B52 | 0.10 | ST. MILDRED'S ROAD OPEN SPACE | Bowthorpe | Informal amenity open space NCC | 52.0 |
| B53 | 0.04 | STYLEMAN RD OPEN SPACE | Bowthorpe | Informal amenity open space NCC | 57.1 |
| B55 | 0.16 | TAYLOR ROAD | Bowthorpe | Informal amenity open space NCC | 97.1 |
| B60 | 0.20 | WALDERGRAVE | Bowthorpe | Informal amenity open space NCC | 57.1 |
| B61 | 0.17 | WENDENE OPEN SPACE | Bowthorpe | Informal amenity open space NCC | 52.6 |
| B64 | 0.11 | WILBERFORCE ROAD | Bowthorpe | Informal amenity open space NCC | 50.0 |
| B66 | 1.38 | WILBERFORCE ROAD OPEN SPACE | Bowthorpe | Informal amenity open space NCC | 70.0 |
| B67 | 0.44 | YAXLEY WAY | Bowthorpe | Informal amenity open space NCC | 65.5 |
| B68 | 0.05 | YAXLEY WAY / ASTLEY RD C/WAY | Bowthorpe | Informal amenity open space NCC | 80.6 |
| N04 | 0.10 | BELVOIR STREET | Nelson | Informal amenity open space NCC | 87.5 |
| N10 | 0.08 | HEIGHAM GROVE | Nelson | Informal amenity open space NCC | 68.0 |
| N18 | 0.03 | ROSE VALLEY | Nelson | Informal amenity open space NCC | 76.4 |
| U04 | 0.09 | BLUEBELL ROAD | University | Informal amenity open space NCC | 64.2 |
| U06 | 0.11 | CUNNINGHAM ROAD A | University | Informal amenity open space NCC | 57.1 |

| | | | | | |
|------|-------|--|------------|-------------------------------------|------|
| U07 | 0.09 | CUNNINGHAM ROAD B | University | Informal amenity open space NCC | 57.1 |
| U12 | 0.28 | FRIENDS ROAD | University | Informal amenity open space NCC | 62.5 |
| U13 | 0.19 | GEORGE BORROW ROAD | University | Informal amenity open space NCC | 62.9 |
| U15 | 0.10 | HENDERSON ROAD | University | Informal amenity open space NCC | 75.0 |
| U16 | 0.02 | KENNETT CLOSE | University | Informal amenity open space NCC | 57.1 |
| U17 | 0.12 | LOUND ROAD | University | Informal amenity open space NCC | 76.9 |
| U22 | 0.12 | SCARNELL ROAD | University | Informal amenity open space NCC | 62.5 |
| W01 | 0.09 | BATES GREEN | Wensum | Informal amenity open space NCC | 57.1 |
| W09 | 0.37 | DARRELL PLACE | Wensum | Informal amenity open space NCC | 60.0 |
| W19 | 0.07 | KNOWLAND GROVE | Wensum | Informal amenity open space NCC | 63.2 |
| W21 | 0.15 | LEEWOOD CRESCENT | Wensum | Informal amenity open space NCC | 50.0 |
| W24 | 1.20 | MARLPIT LANE OPEN SPACE | Wensum | Informal amenity open space NCC | 65.7 |
| W26 | 0.86 | MARLPIT SOUND BARRIER | Wensum | Informal amenity open space NCC | 72.0 |
| W34 | 0.50 | NORTHUMBERLAND STREET OPEN SPACE | Wensum | Informal amenity open space NCC | 63.9 |
| W35 | 0.09 | RANDLE GREEN | Wensum | Informal amenity open space NCC | 57.1 |
| W43 | 0.26 | WENSUM COMMUNITY CENTRE | Wensum | Informal amenity open space NCC | 77.4 |
| W48 | 0.36 | WEST END STREET | Wensum | Informal amenity open space NCC | 68.4 |
| W51 | 0.13 | WINSFORD WAY | Wensum | Informal amenity open space NCC | 62.5 |
| W54 | 0.09 | CADGE CLOSE | Wensum | Informal amenity open space NCC | NK |
| | 18.00 | | | | 64.0 |
| B41 | 0.10 | HUMBLEYARD | Bowthorpe | Informal amenity open space private | 67.7 |
| N07 | 0.76 | COLMAN HOSPITAL (UNTHANK ROAD) | Nelson | Informal amenity open space private | 87.1 |
| N09 | 0.06 | GARDEN HOUSE PH, DENBIGH ROAD | Nelson | Informal amenity open space private | 80.5 |
| N19 | 0.59 | SCOUT HEADQUARTERS (JESSOP RD) | Nelson | Informal amenity open space private | 65.7 |
| N21 | 0.36 | THE ELMS | Nelson | Informal amenity open space private | 86.6 |
| N21A | 0.62 | THE ELMS | Nelson | Informal amenity open space private | 86.6 |
| U14 | 0.03 | GEORGE BORROW ROAD (HOUSING ASSOCIATION) | University | Informal amenity open space private | 59.2 |
| U24 | 14.14 | UEA | University | Informal amenity open space private | 83.6 |
| W04B | 0.39 | BOWTHORPE SCHOOL COMMUNITY PARK | Wensum | Informal amenity open space private | NK |

| | | | | | |
|------|-------|--|------------|--|------|
| W16 | 0.60 | HELLESDON ROAD | Wensum | Informal amenity open space private | 66.6 |
| W40 | 0.35 | THE GATEHOUSE | Wensum | Informal amenity open space private | 78.3 |
| | 18.01 | | | | 76.2 |
| B06 | 0.69 | BEVAN CLOSE | Bowthorpe | Natural and semi natural green space NCC | 39.1 |
| B17 | 3.93 | BUNKERS HILL | Bowthorpe | Natural and semi natural green space NCC | 52.2 |
| B17A | 0.76 | BUNKERS HILL | Bowthorpe | Natural and semi natural green space NCC | 52.2 |
| B19 | 0.21 | CHAPEL BREAK ROAD TREE BELT | Bowthorpe | Natural and semi natural green space NCC | 50.0 |
| B19A | 0.26 | CHAPEL BREAK ROAD TREE BELT | Bowthorpe | Natural and semi natural green space NCC | 50.0 |
| B22 | 31.44 | CHAPELBREAK ROAD MARSH/BOWTHORPE MARSH/ SOUTHERN PARK | Bowthorpe | Natural and semi natural green space NCC | 69.5 |
| B23 | 1.80 | CHAPELBREAK TREE BELT | Bowthorpe | Natural and semi natural green space NCC | 50.0 |
| B27 | 0.64 | CLOVERHILL TREE BELT | Bowthorpe | Natural and semi natural green space NCC | 47.8 |
| B34 | 6.07 | EARLHAM MARSH | Bowthorpe | Natural and semi natural green space NCC | 58.5 |
| B37 | 0.10 | ENFIELD ROAD/PITCHFORD ROAD | Bowthorpe | Natural and semi natural green space NCC | 52.9 |
| B56 | 0.23 | THREE SCORE TREE BELT | Bowthorpe | Natural and semi natural green space NCC | 43.4 |
| B56A | 0.74 | THREE SCORE TREE BELT | Bowthorpe | Natural and semi natural green space NCC | 43.4 |
| B56B | 0.21 | THREE SCORE TREE BELT | Bowthorpe | Natural and semi natural green space NCC | 43.4 |
| B56C | 0.35 | THREE SCORE TREE BELT | Bowthorpe | Natural and semi natural green space NCC | 43.4 |
| B56D | 0.47 | THREE SCORE TREE BELT | Bowthorpe | Natural and semi natural green space NCC | 43.4 |
| B58 | 0.75 | TOYLE ROAD | Bowthorpe | Natural and semi natural green space NCC | 52.9 |
| B59 | 6.18 | TWENTY ACRE WOODS | Bowthorpe | Natural and semi natural green space NCC | 50.0 |
| B59A | 2.19 | TWENTY ACRE WOODS | Bowthorpe | Natural and semi natural green space NCC | 50.0 |
| B62 | 0.23 | WENDENE TREE BELT A | Bowthorpe | Natural and semi natural green space NCC | 47.0 |
| B62A | 0.40 | WENDENE TREE BELT A | Bowthorpe | Natural and semi natural green space NCC | 47.0 |
| B63 | 0.18 | WENDENE TREE BELT B | Bowthorpe | Natural and semi natural green space NCC | 47.0 |
| B63A | 0.08 | WENDENE TREE BELT B | Bowthorpe | Natural and semi natural green space NCC | 47.0 |
| B63B | 0.06 | WENDENE TREE BELT B | Bowthorpe | Natural and semi natural green space NCC | 47.0 |
| N20 | 0.43 | THE DELL | Nelson | Natural and semi natural green space NCC | 51.6 |
| U02 | 3.96 | BLACKDALE PLANTATION | University | Natural and semi natural green space NCC | 80.0 |

| | | | | | |
|------|-------|-------------------------------------|------------|--|------|
| U10 | 9.02 | EARLHAM PARK WOODS | University | Natural and semi natural green space NCC | 69.6 |
| U11 | 4.24 | EARLHAM ROAD MARSH 1 | University | Natural and semi natural green space NCC | 75.0 |
| U11A | 2.23 | EARLHAM ROAD MARSH 2 | University | Natural and semi natural green space NCC | 75.0 |
| U18 | 1.26 | MILLENNIUM GREEN | University | Natural and semi natural green space NCC | 60.5 |
| U20 | 0.67 | OLD HOUSE PLANTATION | University | Natural and semi natural green space NCC | 50.0 |
| U20A | 0.35 | Old House Plantation | University | Natural and semi natural green space NCC | 50.0 |
| W15 | 1.75 | HELLESDON MILL MEADOW | Wensum | Natural and semi natural green space NCC | 62.8 |
| W17 | 3.22 | HELLESDON ROAD MARSH | Wensum | Natural and semi natural green space NCC | 60.0 |
| W18 | 5.11 | HELLESDON ROAD MEADOW | Wensum | Natural and semi natural green space NCC | 61.1 |
| W27 | 2.64 | MARLPIT WOODS | Wensum | Natural and semi natural green space NCC | 47.2 |
| W32 | 0.28 | MORGANS RISE | Wensum | Natural and semi natural green space NCC | 64.7 |
| W39 | 1.70 | SYCAMORE CRESCENT | Wensum | Natural and semi natural green space NCC | 52.9 |
| W53 | 2.64 | WOODLANDS PARK | Wensum | Natural and semi natural green space NCC | 58.8 |
| | 97.48 | | | | 53.9 |
| U25 | 24.61 | UEA | University | Natural and semi natural green space private | 83.6 |
| W11 | 2.99 | HELLESDON MARSHES 1 (HELLESDON RD) | Wensum | Natural and semi natural green space private | 65.2 |
| W12 | 6.81 | HELLESDON MARSHES 2 (HELLESDON RD) | Wensum | Natural and semi natural green space private | 65.3 |
| W13 | 24.45 | HELLESDON MARSHES 3 (SWEETBRIAR RD) | Wensum | Natural and semi natural green space private | 56.5 |
| W41 | 0.58 | THE WILLOWS (DEREHAM RD) | Wensum | Natural and semi natural green space private | 86.9 |
| W42 | 1.11 | WATERWORKS | Wensum | Natural and semi natural green space private | 77.7 |
| W55 | 0.90 | AVENTIS (SWEET BRIAR ROAD) | Wensum | Natural and semi natural green space private | 56.5 |
| | 61.46 | | | | 68.0 |
| B15 | 0.92 | BOWTHORPE PARK | Bowthorpe | Outdoor Sport | 62.2 |
| N13 | 0.53 | HEIGHAM PARK | Nelson | Outdoor Sport | 87.1 |
| N15 | 0.11 | MITRE PH BOWLS GREEN (EDINBURGH RD) | Nelson | Outdoor Sport | 84.7 |
| U26 | 4.68 | UEA | University | Outdoor Sport | 83.6 |
| W02 | 4.24 | BAYER SPORTS GROUND (HELLESDON RD) | Wensum | Outdoor Sport | 66.6 |
| W04A | 1.87 | BOWTHORPE SCHOOL COMMUNITY PARK | Wensum | Outdoor Sport | NK |
| W25 | 0.07 | MARLPIT PH (HELLESDON RD) | Wensum | Outdoor Sport | 77.7 |

| | | | | | |
|------|-------|--|------------|-------------------|------|
| | 12.43 | | | | 77.0 |
| B13 | 7.55 | BOWTHORPE PARK | Bowthorpe | Parks and gardens | 62.2 |
| N12 | 1.70 | HEIGHAM PARK | Nelson | Parks and gardens | 87.1 |
| N17 | 1.18 | PLANTATION GARDENS | Nelson | Parks and gardens | 87.0 |
| U09 | 26.79 | EARLHAM PARK | University | Parks and gardens | 68.1 |
| W04 | 6.35 | BOWTHORPE SCHOOL COMMUNITY PARK | Wensum | Parks and gardens | NK |
| | 43.56 | | | | 76.1 |
| B18 | 0.26 | CHAPEL BREAK FS/IS | Bowthorpe | School grounds | |
| B25 | 0.13 | CLOVERHILL FIRST SCHOOL | Bowthorpe | School grounds | |
| B25A | 0.16 | CLOVERHILL FIRST SCHOOL | Bowthorpe | School grounds | |
| B25B | 0.05 | CLOVERHILL FIRST SCHOOL | Bowthorpe | School grounds | |
| B25C | 0.02 | CLOVERHILL FIRST SCHOOL | Bowthorpe | School grounds | |
| B51 | 1.31 | ST MICHAELS MS/JS | Bowthorpe | School grounds | |
| N01 | | AVENUE FS | Nelson | School grounds | |
| N02 | | AVENUE MS/JS | Nelson | School grounds | |
| N14 | 3.68 | HEIGHAM PARK FS/RECREATION ROAD IS | Nelson | School grounds | |
| N16 | 0.23 | PARKSIDE SS | Nelson | School grounds | |
| U01 | 0.91 | BLACKDALE MS | University | School grounds | |
| U08 | 10.88 | EARLHAM HS | University | School grounds | |
| U19 | 0.77 | NORTHFIELDS FS/BLUEBELL PS | University | School grounds | |
| U23 | 0.87 | ST THOMAS MORE MS/JS | University | School grounds | |
| U27 | 0.51 | WEST EARLHAM FS/IS | University | School grounds | |
| U28 | 3.39 | WEST EARLHAM MS/JS | University | School grounds | |
| W20 | 2.51 | LARKMAN FS/MS/PS | Wensum | School grounds | |
| W31 | 1.56 | MILL VIEW MS/KNOWLAND GROVE JS (VALLEY PS) | Wensum | School grounds | |
| W33 | 1.11 | NELSON FS/IS | Wensum | School grounds | |
| W36 | 0.80 | RANWORTH JS/HENDERSON PS | Wensum | School grounds | |
| W45 | 1.20 | WENSUM MS/JS | Wensum | School grounds | |
| | 30.35 | | | | |

NORWICH OPEN SPACE NEEDS ASSESSMENT

PART 2

AREA PROFILES



SUB AREA 2 NORTH

CONTENTS

Page (s)

Introduction

Map of Sub Area

Description of Sub Area

Quantity of open space

Access to open space

Quality of open space

Strategic Priorities 6
3

Database 7

8

10

12

13

14

INTRODUCTION

Area profiles

These area profiles form part of a larger study of open space and recreation facilities in Norwich City, using guidance provided under 'PPG 17', and should be read in context with the overall findings of the study (see Part 1).

The profiles give detail at a local level in relation to the provision of open space and recreational facilities by sub area.

Four sub areas have been identified across the City. Each sub area has been analysed using the proposed Norwich standards for open space, outlined in Part 1 of the report. The profiles include the following information:

- Relevant census data and other information about the area. This is important when considering the current and future needs of the population for open space provision
- Location and types of open space
- Quantity of open space
- Access to open space
- Quality of open space
- Strategic priorities for open space.

Typology

Part 1 of the report identifies the range of typologies for open space and sport and recreation facilities for which standards have been developed as follows:

- Parks and Gardens
- Natural and semi natural green space
- Green corridors
- Outdoor sports facilities and 'recreation grounds'
- Informal/amenity open space
- Provision for children and young people
- Allotment and community gardens
- Important indoor sports facilities
- Community halls

Quantity of open space

The quantity of open space in each sub area has been assessed against a standard for each typology recommended in Part 1 of the study as follows:

- | | |
|--|-------------------------|
| • Parks and Gardens | 0.62 ha per 1000 people |
| • Natural and semi natural green space (including green corridors) | 2.46 ha per 1000 people |
| • Informal/amenity open space | 1.0 ha per 1000 people |
| • Provision for children and young people | 0.16 ha per 1000 people |
| • Outdoor sports facilities and 'recreation grounds' | 1.01 ha per 1000 people |
| • Allotment and community gardens | 0.44 ha per 1000 people |

These standards have been applied at a local level to determine the provision of different types of open space across the adopted minimum standard, this is summarised in each profile, showing:

- the existing quantity of open space (existing provision)
- the required quantity of open space for the population of the area (required provision)
- the surplus or deficiency of open space
- Supply against the standard.

This is expressed as actual quantities of provision in hectares, and as provision per 1000 of the population, as hectares,

Quality of open space

The quality audit criteria have been built upon guidance provided in the 'PPG 17 companion guide', including criteria used as part of Green Flag, 'Raising the standard', Sport England's 'Towards a Level Playing Field.' Sites were given a generic assessment against a range of criteria (set out in Part 1). For all categories scores were given in relation to the maximum available for that category and are expressed as percentages.

Access to open space

Access to open space in each sub area has been assessed against a standard for each typology recommended in Part 1 of the study as follows:

- | | |
|--|---|
| • Parks and Gardens | Within 900m (larger parks), 600m pocket parks |
| • Natural and semi natural green space (including green corridors) | Within 600m |
| • Informal/amenity open space | Within 100m |
| • Provision for children and young people | Within 240m (young people), 720m (teenagers) |

- Outdoor sports facilities and 'recreation grounds' Within 3 kms
- Allotment and community gardens Within 600m

For each Sub Area, the following is shown in relation to access to open space:

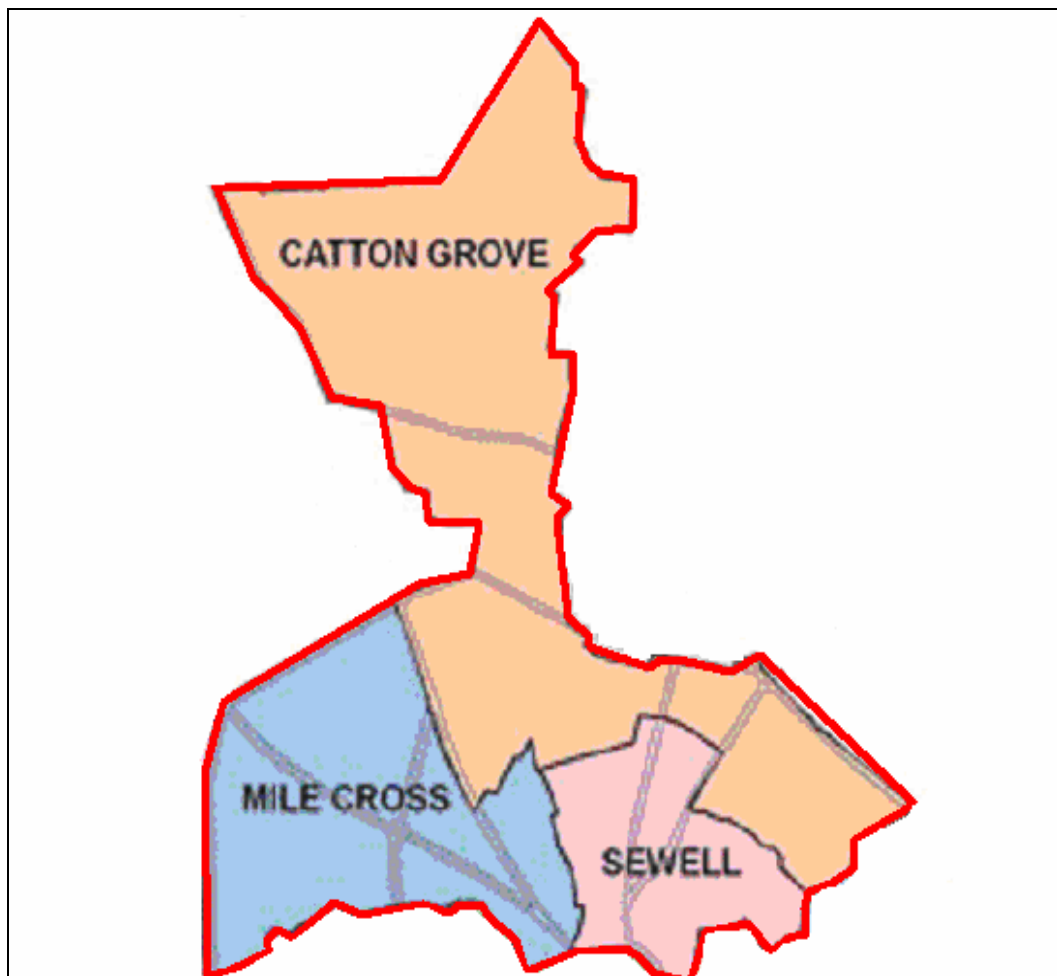
- a map showing access to the different types of open space against the access standards outlined above (not all open space is mapped to avoid unnecessary detail)
- observations related to access to each typology.

Using the database

The database that has been developed as part of the audit allows information to be interpreted in many ways, and it is specifically designed to be a 'working tool', which can be used for specific enquiries related to the provision and quality of open space as and when required.

These enquiries may be in the form of planning enquiries, for example to determine where developer contributions from a new development would be best directed in the area; or, they may help inform open space management decisions and priorities, for example determining where funding should be targeted or areas of open space which are in most need of improving.

MAP OF SUB AREA



DESCRIPTION OF NORTH SUB AREA

Location

The north sub area comprises the wards of Catton Grove, Mile Cross and Sewell. Catton Grove includes Norwich airport and industrial and employment areas to the north, with newer housing off Fifers Lane, together with the Fiddlewood estate and areas of inter war and more recent housing in Upper Hellesdon and New Sprowston. The ward bounds the suburban parishes in neighbouring Broadland including Catton Park, and also includes much of Mousehold Heath. Mile Cross is a mixed ward north of the River Wensum, with extensive employment areas, the Mile Cross estate and Victorian and newer private housing adjacent to the city centre. Sewell is an area of predominantly high density Victorian terraced street north of the city centre, with very little open space but good access to Mousehold and Waterloo Park.

Population

The population of the wards in this sub area are as follows:

- Catton Grove 10250
- Mile Cross 10570
- Sewell
- Total

10400

31220

QUANTITY OF OPEN SPACE

Set against the minimum recommended standards of provision, there is an overall shortfall of open space in the north sub area of 21 ha, which increases to about 50ha if private open space and natural green space is excluded.

In terms of the individual typologies the following apply

- The provision for parks and gardens slightly exceeds the minimum recommended standard
- Provision for natural and semi natural green space is adequate, but there is a shortfall if private land is excluded. Much of this private land is not readily accessible to the community.
- There is a significant shortfall of about 10ha of informal amenity open space, which increases to 17ha if private land is excluded. Much of this 'private' land is incidental open space on former MOD land now developed for residential purposes and fulfilling a community need.
- Play provision is deficient, and only about three-quarters of the minimum recommended standard is met
- Provision for allotments is adequate compared with the recommended new minimum standard.
- There is a major deficiency of outdoor sports space, with only 5ha of current provision to meet a minimum recommended standard of over 31 ha. There are only 2 'public' sites used for sport in the sub area, and one private bowls green.
- School grounds occupy 12 ha and could be used to meet some of the shortfalls identified above, particularly for outdoor sport.

| NORTH - Catton Grove, Mile Cross & Sewell, population 31,220 | Number of sites | Existing quantity (ha) | Existing quantity (ha/1000) | Required quantity (ha) | Required quantity (ha/1000) | Balance (ha) | Balance (ha/1000) | Supply |
|---|----------------------------|---------------------------------------|--|---------------------------------------|--|-------------------------|------------------------------|------------------|
| Parks & Gardens | 7 | 19.71 | 0.63 | 19.36 | 0.62 | 0.35 | 0.01 | Adequate |
| Natural/semi natural green space – total* | 29 | 93.69 | 3.00 | 76.80 | 2.46 | 16.89 | 0.54 | Adequate |
| Informal amenity open space – total** | 40 | 21.43 | 0.69 | 31.22 | 1.00 | -9.79 | -0.31 | Shortfall |
| Play provision - total | 23 | 3.53 | 0.11 | 5.62 | 0.18 | -2.09 | -0.07 | Shortfall |
| Allotments | 7 | 14.55 | 0.47 | 13.74 | 0.44 | 0.81 | 0.03 | Adequate |
| Outdoor sports facilities | 5 | 4.69 | 0.15 | 31.53 | 1.01 | -26.84 | -0.86 | Shortfall |
| TOTAL | 111 | 157.60 | 5.05 | 178.27 | 5.71 | -20.67 | -0.66 | Shortfall |

* Natural/semi natural green space public 18 65.63

* Natural/semi natural green space private 8 22.26

* Green corridors 3 5.80

**Churchyards & cemeteries 2 0.53

**Informal amenity open space public 25 13.82

**Informal amenity open space private 13 7.08

School grounds 13 11.84

ACCESS TO OPEN SPACE

An assessment has been made of the accessibility of residents of this sub area to a range of more local facilities. Accessibility to strategic facilities, such as sports halls and swimming pools and larger parks and gardens is dealt with in Part 1.

In general, accessibility to these facilities is good, though there are gaps (see accompanying map).

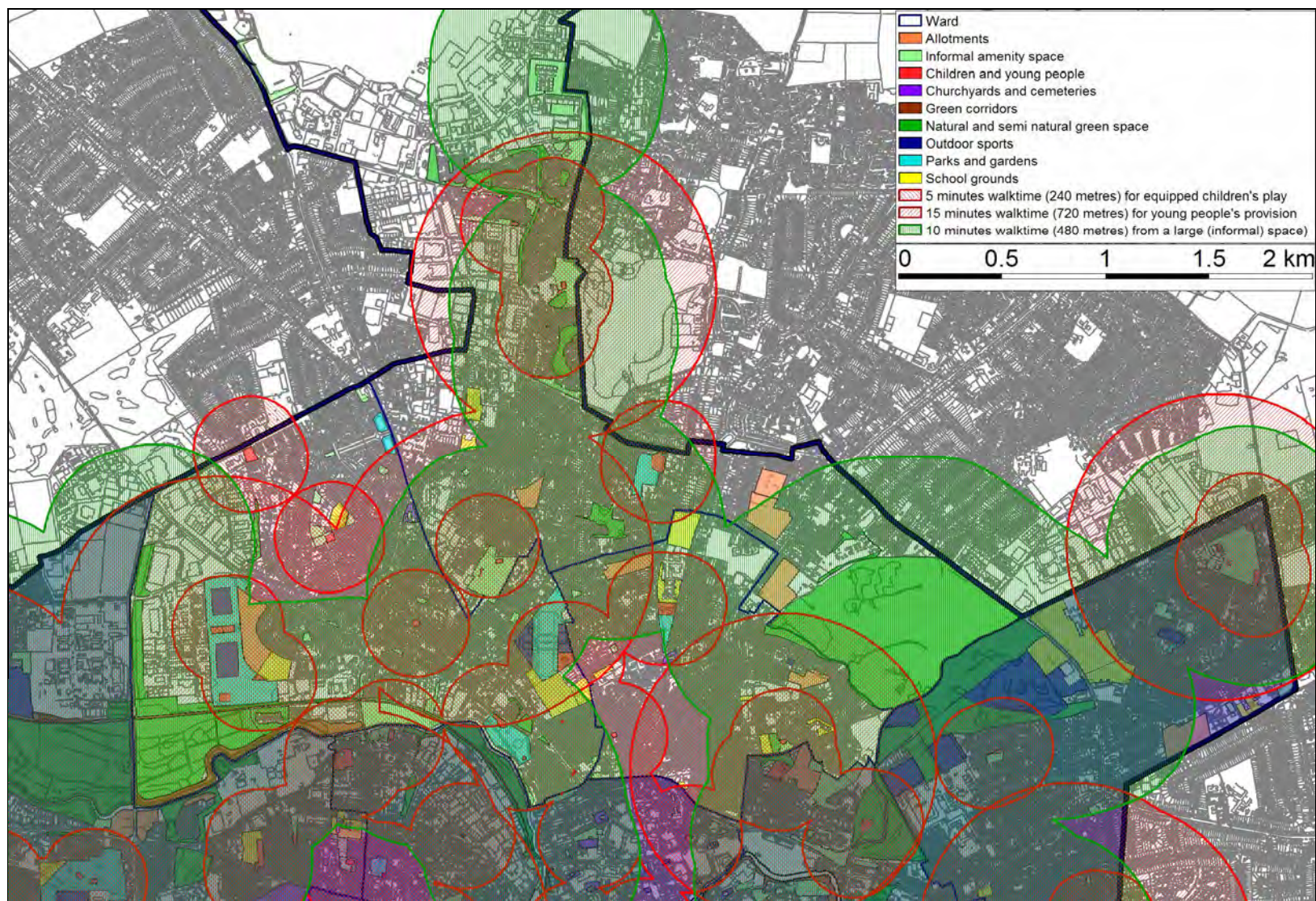
Much of the sub area is within 10 minutes' walking time of larger informal amenity open spaces, which are well distributed, throughout the area.

Access to children's play facilities is patchy and there are significant gaps in provision, and there are also deficiencies in access to teenagers' play including games areas and skateparks.

Outdoor sports facilities are restricted to Sloughbottom and Waterloo Parks, though there are facilities near to the edge of this sub area in adjacent sub areas and neighbouring parishes in Broadland

Access to allotments within reasonable walking time is generally good

The presence of Mousehold Heath and the river valley gives good access to large areas of natural and semi natural green space, and there are important facilities such as Catton Park in the neighbouring parishes of Old Catton, Sprowston and Hellesdon, including access to the wider countryside



QUALITY OF OPEN SPACE

The overall quality of open space in the north sub area is slightly lower than the Norwich average. In particular:

- Parks and gardens score about the same as the Norwich average, though there is a significant variation between the best (Waterloo Park 84%) and the poorest (St Clements Park 55%)
- Natural and semi natural green space is poorer than the average, and like all areas, scores lower than other types of open space. Mile Cross Marsh is considered to be the best natural green space in the public realm. Lime Kiln Mews, a small site on Dereham Road, is considered the best natural green space in private ownership, and Sweet Briar Road tree belt the poorest. Green corridors in this sub area are generally of high quality.
- Informal amenity open also scores lower than the city average, both public and private, and there is a variation between 79% and 44% in individual sites, most of which are smaller areas of open space in housing areas. The two churchyards in this sub area offer very little in terms of quality open space.
- Play provision is generally of a high quality, and about the city average. There are good teenagers' facilities in particular at Sloughbottom Park, and children's play areas in various locations (again including Sloughbottom). Facilities are identified as relatively poor at Bussey Road and Peterson Road.
- Allotments are generally of average quality, the best being at Mousehold North and Wall Road, the poorest at Catton Grove and Elm Grove Lane.
- The quality of outdoor sports facilities is good and above the city average, particularly at Waterloo Park and the private bowls green at Heath House PH. The ancillary and changing facilities at Sloughbottom Park rate rated very poor, with a quality score of 52%.

| | Sub area average | Norwich average |
|--|------------------|-----------------|
| Parks and gardens | 70.1% | 70.9% |
| Natural and semi natural green space | 57.6% | 61.1% |
| Informal amenity open space | 66.1% | 69.2% |
| Play provision for children and young people | 77.5% | 77.3% |
| Allotments | 66.8% | 68.3% |
| Outdoor sports facilities and 'recreation grounds' | 76.4% | 73.1% |
| Total | 67.7% | 68.6% |

STRATEGIC PRIORITIES

- There is an overall shortfall of open space in the north sub area of 20ha, which increases to 50ha if private land is excluded. There are opportunities for access to open space in the neighbouring parishes in Broadland, but a priority in this sub area is to ensure that additional open space provision is made overall.
- There are particular deficiencies of informal open space, children's and teenagers' play and outdoor sports facilities. Additional play provision should be made in conjunction with any new development. As outdoor sport requires larger areas of land, full provision in accordance with the minimum recommended standard is unlikely to be achieved. A solution to this might be to accommodate additional pitches, courts and greens on existing sites where appropriate (there is space at both Waterloo Park and Sloughbottom Park for additional facilities), and to negotiate with schools to allow more community use of education facilities (e.g. Blythe Jex School)
- The quality of open space in this area is generally slightly below the city average, although it is good for outdoor sport and play. Future development should ensure that, where appropriate, qualitative improvements are made to existing areas of open space, in accordance with the deficiencies outlined in the attached database. In particular more intensive use could be made for outdoor sport at Sloughbottom Park if improvements are made to the old and sub standard changing facilities there. This should ensure that these match the quality of the pitches, play and teen facilities already there, and any new ones that might be accommodated.
- The rationalisation of schools in this area may leave areas of open space no longer required for their original school purpose, and alternative uses for another type of open space to benefit the community should be considered before any site is redeveloped.
- While there is a shortage of open space in this area there may be circumstances where the disposal of areas of open space with poor quality and low value for the community might be redeveloped for other purposes where this might be of overall benefit to open space.

DATABASE

| Ha | URL | LOCATION | WARD | CATEGORY | Quality % |
|-------|------|--------------------------------|--------------|----------------------------|-----------|
| 1.49 | CG02 | BRICKFIELDS | Catton Grove | Allotments | 66.6 |
| 1.16 | CG05 | CATTON GROVE | Catton Grove | Allotments | 57.5 |
| 2.67 | CG18 | HILLFARM | Catton Grove | Allotments | 69.4 |
| 2.98 | CG36 | WALL ROAD | Catton Grove | Allotments | 74.0 |
| 3.55 | MC43 | VALPY AVENUE | Mile Cross | Allotments | 66.6 |
| 1.54 | S07 | ELM GROVE LANE | Sewell | Allotments | 59.2 |
| 1.15 | S15 | MOUSEHOLD NORTH | Sewell | Allotments | 74.0 |
| 14.55 | | | | | 66.8 |
| 0.04 | CG29 | POINTERS FIELD | Catton Grove | Children and YP BMX | 72.2 |
| 0.22 | MC34 | SLOUGHBOTTOM PARK | Mile Cross | Children and YP BMX | 90.9 |
| 0.08 | CG16 | GREENFIELDS | Catton Grove | Children and YP MUGA | 81.2 |
| 0.07 | CG28 | POINTERS FIELD | Catton Grove | Children and YP MUGA | 81.2 |
| 0.18 | MC33 | SLOUGHBOTTOM PARK | Mile Cross | Children and YP MUGA | 96.1 |
| 0.03 | CG17 | GREENFIELDS | Catton Grove | Children and YP Skateboard | 78.2 |
| 0.63 | | | | | 83.3 |
| 0.01 | CG04 | BUSSEY ROAD | Catton Grove | Children and YP Play | 53.5 |
| 0.02 | CG14 | GEORGE POPE ROAD | Catton Grove | Children and YP Play | 70.2 |
| 0.01 | CG20 | IVES ROAD | Catton Grove | Children and YP Play | 83.3 |
| 0.03 | CG26 | PENNYROYAL | Catton Grove | Children and YP Play | 74.4 |
| 0.06 | CG32 | SPENCER ROAD (OFF FIFERS LANE) | Catton Grove | Children and YP Play | 78.5 |
| 0.58 | CG34 | ST CLEMENTS PARK | Catton Grove | Children and YP Play | 74.4 |
| 0.36 | MC08 | BOWERS AVENUE | Mile Cross | Children and YP Play | 65.9 |
| 0.15 | MC29 | PETERSON ROAD | Mile Cross | Children and YP Play | 55.4 |
| 0.10 | MC30 | SHORNCLIFFE AVENUE | Mile Cross | Children and YP Play | 78.7 |
| 0.17 | MC35 | SLOUGHBOTTOM PARK | Mile Cross | Children and YP Play | 93.0 |
| 0.14 | MC36 | SLOUGHBOTTOM PARK 2 | Mile Cross | Children and YP Play | 74.3 |

| | | | | | |
|------|------|---|--------------|---------------------------------|------|
| 0.52 | MC46 | WATERLOO PARK | Mile Cross | Children and YP Play | 88.2 |
| 0.13 | MC48 | WENSUM PARK 1 | Mile Cross | Children and YP Play | 84.3 |
| 0.02 | MC49 | WENSUM PARK 2 | Mile Cross | Children and YP Play | 71.8 |
| 0.05 | S10 | GERTRUDE ROAD | Sewell | Children and YP Play | 74.4 |
| 0.04 | S12 | HEATH ROAD | Sewell | Children and YP Play | 78.7 |
| 0.51 | S17 | SEWELL PARK | Sewell | Children and YP Play | 82.9 |
| 2.90 | | | | | 75.4 |
| 0.30 | MC38 | ST CATHERINE'S (MILE CROSS RD) | Mile Cross | Churchyards & cemeteries | 61.7 |
| 0.23 | S03 | CHRIST CHURCH (NEW CATTON) | Sewell | Churchyards & cemeteries | 37.0 |
| 0.53 | | | | | 49.4 |
| 0.39 | MC18 | MARRIOTS WAY B DOLPHIN ST - MILE CROSS RD | Mile Cross | Green corridors | 70.8 |
| 0.80 | MC19 | MARRIOTS WAY C - MILE CROSS RD - SWEET BRIAR RD | Mile Cross | Green corridors | 81.4 |
| 4.60 | MC50 | WENSUM VALLEY WALK | Mile Cross | Green corridors | 73.3 |
| 5.80 | | | | | 75.2 |
| 0.08 | CG03 | BULLARD ROAD | Catton Grove | Informal amenity open space NCC | 78.5 |
| 2.88 | CG15 | GREENFIELDS | Catton Grove | Informal amenity open space NCC | 58.0 |
| 0.08 | CG19 | IVES RD/BUSSEY RD | Catton Grove | Informal amenity open space NCC | 76.6 |
| 3.30 | CG27 | POINTERS FIELD | Catton Grove | Informal amenity open space NCC | 71.0 |
| 0.68 | CG35 | ST FAITHS ROAD SOUND BARRIER | Catton Grove | Informal amenity open space NCC | 76.0 |
| 0.09 | MC01 | ALMA TERRACE | Mile Cross | Informal amenity open space NCC | 60.7 |
| 3.36 | MC02 | ANDERSONS MEADOW | Mile Cross | Informal amenity open space NCC | 68.8 |
| 0.18 | MC05 | BASSINGHAM ROAD | Mile Cross | Informal amenity open space NCC | 61.9 |
| 0.14 | MC06 | BOLINGBROKE ROAD | Mile Cross | Informal amenity open space NCC | 77.4 |
| 0.10 | MC09 | CIVIC GARDENS | Mile Cross | Informal amenity open space NCC | 44.0 |
| 0.49 | MC11 | DOLPHIN PATH | Mile Cross | Informal amenity open space NCC | 65.7 |
| 0.08 | MC13 | DRAYTON ROAD STEPS | Mile Cross | Informal amenity open space NCC | 65.4 |
| 0.09 | MC14 | FENN CRESCENT | Mile Cross | Informal amenity open space NCC | 65.3 |
| 0.11 | MC15 | HALF MILE ROAD | Mile Cross | Informal amenity open space NCC | 71.4 |
| 0.04 | MC16 | HALF MILE ROAD/MILE CROSS ROAD | Mile Cross | Informal amenity open space NCC | 68.5 |

| | | | | | |
|-------|-------|----------------------------------|--------------|--|------|
| 0.15 | MC27 | PENN GROVE OPEN SPACE | Mile Cross | Informal amenity open space NCC | 70.3 |
| 0.67 | MC28 | PETERSON ROAD | Mile Cross | Informal amenity open space NCC | 62.2 |
| 0.26 | MC39 | ST MARTIN'S CLOSE OPEN SPACE | Mile Cross | Informal amenity open space NCC | 77.4 |
| 0.18 | MC41 | TAILORS ROW | Mile Cross | Informal amenity open space NCC | 57.1 |
| 0.19 | MC42 | THE NORMAN CENTRE | Mile Cross | Informal amenity open space NCC | 82.3 |
| 0.14 | MC51 | WHEELER ROAD | Mile Cross | Informal amenity open space NCC | 57.1 |
| 0.12 | S04 | COLIN'S COURT | Sewell | Informal amenity open space NCC | 67.8 |
| 0.23 | S09 | GERTRUDE RD OPEN SPACE | Sewell | Informal amenity open space NCC | 46.1 |
| 0.09 | S18 | SUN LANE | Sewell | Informal amenity open space NCC | 76.9 |
| 0.11 | S19 | WATERLOO ROAD | Sewell | Informal amenity open space NCC | 75.0 |
| 13.82 | | | | | 67.3 |
| 0.40 | CG01 | AIRPORT PARK & RIDE | Catton Grove | Informal amenity open space private | 78.5 |
| 0.17 | CG01A | AIRPORT PARK & RIDE | Catton Grove | Informal amenity open space private | 78.6 |
| 0.30 | CG01B | AIRPORT PARK & RIDE | Catton Grove | Informal amenity open space private | 78.5 |
| 1.74 | CG07 | DOUGLAS CLOSE | Catton Grove | Informal amenity open space private | 66.6 |
| 0.66 | CG07A | DOUGLAS CLOSE | Catton Grove | Informal amenity open space private | 66.6 |
| 0.87 | CG07B | DOUGLAS CLOSE | Catton Grove | Informal amenity open space private | 66.6 |
| 0.80 | CG08 | DOWDING ROAD | Catton Grove | Informal amenity open space private | 60.7 |
| 0.18 | CG09 | EMBRY CLOSE | Catton Grove | Informal amenity open space private | 57.1 |
| 0.57 | CG22 | MALLORY ROAD | Catton Grove | Informal amenity open space private | 61.9 |
| 0.34 | CG25 | OULTON ROAD / BLICKLING RD (MOD) | Catton Grove | Informal amenity open space private | 71.4 |
| 0.29 | CG31 | SPENCER ROAD (MOD) | Catton Grove | Informal amenity open space private | 54.1 |
| 0.57 | CG31A | SPENCER ROAD (MOD) | Catton Grove | Informal amenity open space private | 54.1 |
| 0.19 | MC07 | BOUNDARY PH (AYLSHAM RD) | Mile Cross | Informal amenity open space private | 68.5 |
| 7.08 | | | | | 66.4 |
| 1.53 | CG11 | FIDDLEWOOD WOODS | Catton Grove | Natural and semi natural green space NCC | 60.0 |
| 0.80 | CG12 | FIFERSLANETREEBELT1,2,3" | Catton Grove | Natural and semi natural green space NCC | 52.1 |
| 0.18 | CG12A | FIFERSLANETREEBELT1,2,3" | Catton Grove | Natural and semi natural green space NCC | 52.1 |
| 0.83 | CG12B | FIFERSLANETREEBELT1,2,3" | Catton Grove | Natural and semi natural green space NCC | 52.1 |
| 0.09 | CG12C | FIFERSLANETREEBELT1,2,3" | Catton Grove | Natural and semi natural green space NCC | 52.1 |

| | | | | | |
|-------|-------|--------------------------------------|--------------|--|------|
| 0.05 | CG12D | FIFERSLANETREEBELT1,2,3"" | Catton Grove | Natural and semi natural green space NCC | 52.1 |
| 0.52 | CG13 | FIFERSLANETREEBELT5,6,7,8"" | Catton Grove | Natural and semi natural green space NCC | 60.0 |
| 0.22 | CG13A | FIFERSLANETREEBELT5,6,7,8"" | Catton Grove | Natural and semi natural green space NCC | 60.0 |
| 0.97 | CG13B | FIFERSLANETREEBELT5,6,7,8"" | Catton Grove | Natural and semi natural green space NCC | 60.0 |
| 0.26 | CG13C | FIFERSLANETREEBELT5,6,7,8"" | Catton Grove | Natural and semi natural green space NCC | 60.0 |
| 0.72 | CG21 | IVES ROAD TREE BELT | Catton Grove | Natural and semi natural green space NCC | 58.3 |
| 0.44 | CG24 | NIGHT PLANTATION | Catton Grove | Natural and semi natural green space NCC | 50.0 |
| 49.94 | CG23 | MOUSEHOLD HEATH | Crome/Cat G | Natural and semi natural green space NCC | 66.7 |
| 0.41 | MC10 | CLAPHAM WOODS | Mile Cross | Natural and semi natural green space NCC | 63.3 |
| 0.08 | MC12 | DRAYTON ROAD GARAGE | Mile Cross | Natural and semi natural green space NCC | 55.0 |
| 3.99 | MC23 | MILE CROSS MARSH | Mile Cross | Natural and semi natural green space NCC | 76.6 |
| 1.24 | MC24 | MILE CROSS TRAVELLERS SITE | Mile Cross | Natural and semi natural green space NCC | 55.0 |
| 3.37 | MC37 | SLOUGHBOTTOM PARK TREE BELT | Mile Cross | Natural and semi natural green space NCC | 53.8 |
| 65.63 | | | | | 57.7 |
| 0.76 | CG10 | FAIRGROUND SITE | Catton Grove | Natural and semi natural green space private | 65.2 |
| 1.70 | CG30 | ROSTWOLD WAY | Catton Grove | Natural and semi natural green space private | 55.0 |
| 0.15 | MC17 | LIME KILN MEWS (DRAYTON RD) | Mile Cross | Natural and semi natural green space private | 76.9 |
| 14.82 | MC21 | MILE CROSS GRAZING LAND | Mile Cross | Natural and semi natural green space private | 65.0 |
| 0.73 | MC22 | MILE CROSS INDUSTRIAL ESTATE | Mile Cross | Natural and semi natural green space private | 63.3 |
| 1.36 | MC40 | SWEET BRIAR ROAD TREE BELT (PRIVATE) | Mile Cross | Natural and semi natural green space private | 47.0 |
| 2.36 | MC40A | SWEET BRIAR ROAD TREE BELT (PRIVATE) | Mile Cross | Natural and semi natural green space private | 47.0 |
| 0.38 | S06 | CROME ROAD (MOUSEHOLD AVENUE) | Sewell | Natural and semi natural green space private | 60.8 |
| 22.26 | | | | | 60.0 |
| 1.72 | MC32 | SLOUGHBOTTOM PARK | Mile Cross | Outdoor Sport | 64.5 |
| 1.17 | MC32A | SLOUGHBOTTOM PARK | Mile Cross | Outdoor Sport | 64.5 |
| 1.05 | MC45 | WATERLOO PARK | Mile Cross | Outdoor Sport | 84.1 |
| 0.67 | MC45A | WATERLOO PARK | Mile Cross | Outdoor Sport | 84.1 |
| 0.07 | S11 | HEATH HOUSE PH | Sewell | Outdoor Sport | 84.7 |
| 4.69 | | | | | 76.4 |
| 1.67 | CG33 | ST CLEMENTS PARK | Catton Grove | Parks and gardens | 54.8 |

| | | | | | |
|-------|-------|------------------------|--------------|-------------------|------|
| 0.40 | MC20 | MILE CROSS GARDENS | Mile Cross | Parks and gardens | 71.2 |
| 0.41 | MC20A | MILE CROSS GARDENS | Mile Cross | Parks and gardens | 71.2 |
| 8.63 | MC31 | SLOUGHBOTTOM PARK | Mile Cross | Parks and gardens | 64.5 |
| 4.88 | MC44 | WATERLOO PARK | Mile Cross | Parks and gardens | 84.1 |
| 2.96 | MC47 | WENSUM PARK | Mile Cross | Parks and gardens | 71.1 |
| 0.78 | S16 | SEWELL PARK | Sewell | Parks and gardens | 73.5 |
| 19.71 | | | | | 70.1 |
| 1.09 | CG06 | CATTON GROVE FS/MS/PS | Catton Grove | School grounds | |
| 0.43 | CG06A | CATTON GROVE FS/MS/PS | Catton Grove | School grounds | |
| 0.90 | MC03 | ANGEL RD MS | Mile Cross | School grounds | |
| 2.99 | MC04 | ANGEL RD FS/IS | Mile Cross | School grounds | |
| 1.58 | MC25 | MILE CROSSMS/DOWSON FS | Mile Cross | School grounds | |
| 0.81 | MC26 | NORMAN FS | Mile Cross | School grounds | |
| 0.28 | S01 | ANGEL RD MS/JS | Sewell | School grounds | |
| 2.00 | S02 | BLYTHE JEX HS | Sewell | School grounds | |
| 0.73 | S02A | BLYTHE JEX HS | Sewell | School grounds | |
| 0.44 | S05 | CROME ROAD | Sewell | School grounds | |
| 0.14 | S08 | GEORGE WHITE MS/JS | Sewell | School grounds | |
| 0.09 | S13 | MAGDALEN GATES FS/IS | Sewell | School grounds | |
| 0.38 | S14 | MOUSEHOLD FS/IS | Sewell | School grounds | |
| 11.84 | | | | | |

NORWICH OPEN SPACE NEEDS ASSESSMENT

PART 2

AREA PROFILES



SUB AREA 3 EAST

CONTENTS

| | Page (s) |
|-------------------------|----------|
| Introduction | 3 |
| Map of Sub Area | 6 |
| Description of Sub Area | 7 |
| Quantity of open space | 8 |
| Access to open space | 10 |
| Quality of open space | 12 |
| Strategic Priorities | 13 |
| Database | 14 |

INTRODUCTION

Area profiles

These area profiles form part of a larger study of open space and recreation facilities in Norwich City, using guidance provided under 'PPG 17', and should be read in context with the overall findings of the study (see Part 1).

The profiles give detail at a local level in relation to the provision of open space and recreational facilities by sub area.

Four sub areas have been identified across the City. Each sub area has been analysed using the proposed Norwich standards for open space, outlined in Part 1 of the report. The profiles include the following information:

- Relevant census data and other information about the area. This is important when considering the current and future needs of the population for open space provision
- Location and types of open space
- Quantity of open space
- Access to open space
- Quality of open space
- Strategic priorities for open space.

Typology

Part 1 of the report identifies the range of typologies for open space and sport and recreation facilities for which standards have been developed as follows:

- Parks and Gardens
- Natural and semi natural green space
- Green corridors
- Outdoor sports facilities and 'recreation grounds'
- Informal/amenity open space
- Provision for children and young people
- Allotment and community gardens
- Important indoor sports facilities
- Community halls

Quantity of open space

The quantity of open space in each sub area has been assessed against a standard for each typology recommended in Part 1 of the study as follows:

- Parks and Gardens 0.62 ha per 1000 people
- Natural and semi natural green space (including green corridors) 2.46 ha per 1000 people
- Informal/amenity open space 1.0 ha per 1000 people
- Provision for children and young people 0.16 ha per 1000 people
- Outdoor sports facilities and 'recreation grounds' 1.01 ha per 1000 people
- Allotment and community gardens 0.44 ha per 1000 people

These standards have been applied at a local level to determine the provision of different types of open space across the adopted minimum standard, this is summarised in each profile, showing:

- the existing quantity of open space (existing provision)
- the required quantity of open space for the population of the area (required provision)
- the surplus or deficiency of open space
- Supply against the standard.

This is expressed as actual quantities of provision in hectares, and as provision per 1000 of the population, as hectares,

Quality of open space

The quality audit criteria have been built upon guidance provided in the 'PPG 17 companion guide', including criteria used as part of Green Flag, 'Raising the standard', Sport England's 'Towards a Level Playing Field.' Sites were given a generic assessment against a range of criteria (set out in Part 1). For all categories scores were given in relation to the maximum available for that category and are expressed as percentages.

Access to open space

Access to open space in each sub area has been assessed against a standard for each typology recommended in Part 1 of the study as follows:

- Parks and Gardens Within 900m (larger parks), 600m pocket parks
- Natural and semi natural green space (including green corridors) Within 600m
- Informal/amenity open space Within 100m
- Provision for children and young people Within 240m (young people), 720m (teenagers)

- Outdoor sports facilities and 'recreation grounds' Within 3 kms
- Allotment and community gardens Within 600m

For each Sub Area, the following is shown in relation to access to open space:

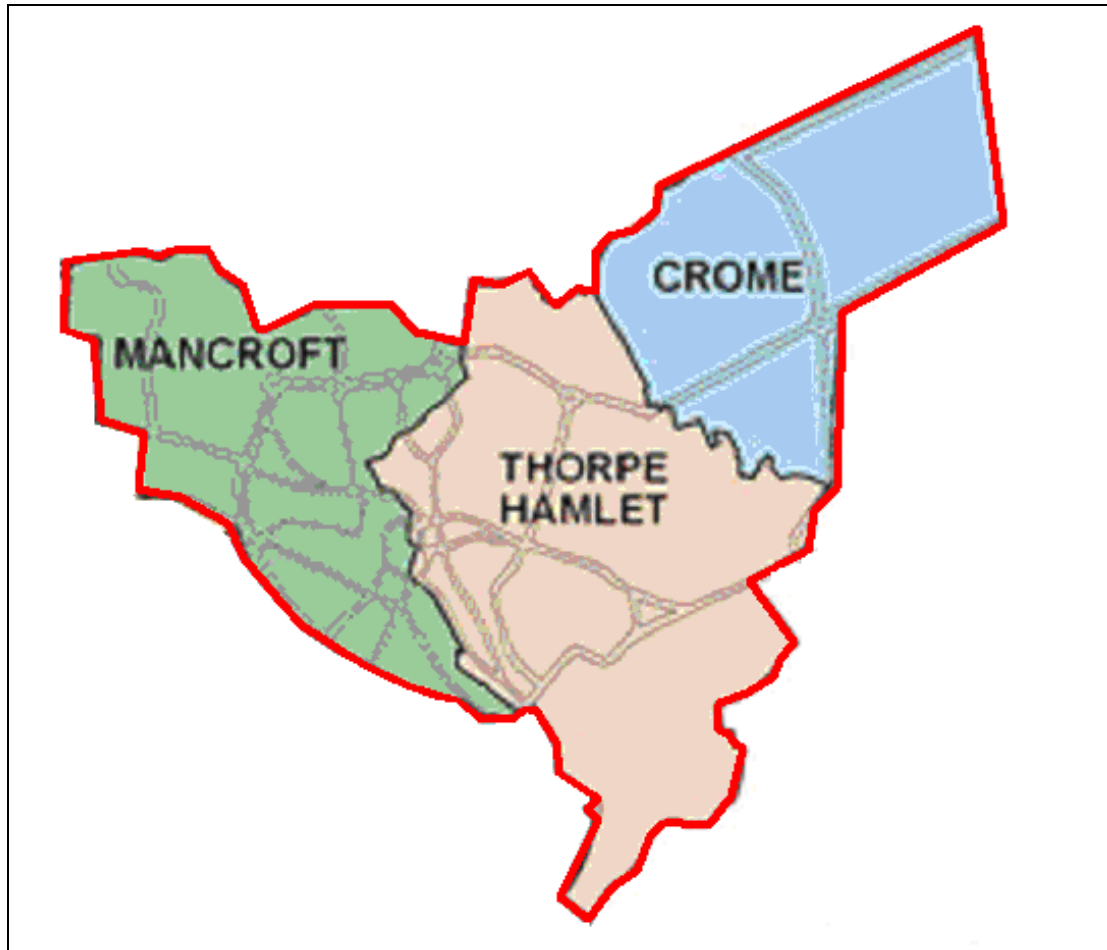
- a map showing access to the different types of open space against the access standards outlined above (not all open space is mapped to avoid unnecessary detail)
- observations related to access to each typology.

Using the database

The database that has been developed as part of the audit allows information to be interpreted in many ways, and it is specifically designed to be a 'working tool', which can be used for specific enquiries related to the provision and quality of open space as and when required.

These enquiries may be in the form of planning enquiries, for example to determine where developer contributions from a new development would be best directed in the area; or, they may help inform open space management decisions and priorities, for example determining where funding should be targeted or areas of open space which are in most need of improving.

MAP OF SUB AREA



DESCRIPTION OF EAST SUB AREA

Location

The east sub area comprises the wards of Crome, Mancroft and Thorpe Hamlet. Crome includes the local authority area of Pilling Park, private housing abutting the prison and Mousehold Heath, and the Heartsease estate, which extends into and is surrounded on three sides by the suburban area of Broadland. Access into the wider countryside is relatively easy. Mancroft ward contains much of the medieval and historic city centre, as well as employment and retail areas and mixed uses extending north west along the River Wensum, and because of the built up nature of the ward, there is little open space. Thorpe Hamlet is a mixed ward with edge of city centre retail and employment areas, parts of the historic core of the city including the Cathedral Close, and mixed social, private and terraced housing to the north and east.

Population

The population of the wards in this sub area are as follows:

- Crome 10070
- Mancroft 9160
- Thorpe Hamlet 9060
- Total 28290

QUANTITY OF OPEN SPACE

In the east sub area, despite the largest number of open space sites in the city, there is a significant shortfall of open space to meet recommended minimum standards, most sites being quite small. If private sites are excluded, the shortfall is trebled. Given the built up nature of this sub area, this situation is unsurprising.

In terms of the individual typologies the following apply

- There are 7 sites classified as parks and gardens, though with the exception of Chapelfield Gardens and Woodrow Pilling Park, these are all relatively small. Provision of parks and gardens is only about 50% of the city average.
- Provision for natural and semi natural green space is only just adequate, but there is a shortfall of 12ha if private land is excluded. Green corridors mainly the Riverside Walk are linear in nature, and do not occupy much land.
- Informal amenity open space is again adequate in total, but deficient if private open space is excluded. About 4ha of the total of 38ha are church grounds, which make a disproportionate contribution to open space in this area, and a further 5ha is cemetery land or burial grounds.
- There is a small shortfall in play provision.
- Provision for allotments is deficient when judged against the recommended new minimum standard of provision, and there are only 2 allotment sites in the sub area, compared with the recommended new minimum standard.
- Outdoor sports facilities demonstrate a major shortfall in provision, especially if Mousehold pitch and putt and private facilities at the Prison (where by definition community access is not available), Carrow Park (where there is controlled community use) and Mount Zion Church are considered.
- There are 20 ha of school grounds where playing fields and other open space uses might be accommodated – indeed there is already some community use of some school pitches at weekends, albeit that this is not in secured community use.

| EAST - Mancroft, Thorpe Hamlet & Crome, population 28,290 | Number of sites | Existing quantity (ha) | Existing quantity (ha/1000) | Required quantity (ha) | Required quantity (ha/1000) | Balance (ha) | Balance (ha/1000) | Supply |
|--|------------------------|-------------------------------|------------------------------------|-------------------------------|------------------------------------|---------------------|--------------------------|------------------|
| Parks & Gardens | 7 | 8.53 | 0.30 | 17.54 | 0.62 | -9.01 | -0.32 | Shortfall |
| Natural/semi natural green space - total * | 43 | 71.75 | 2.54 | 69.59 | 2.46 | 2.16 | 0.08 | Adequate |
| Informal amenity open space - total ** | 111 | 37.94 | 1.34 | 28.29 | 1.00 | 9.65 | 0.34 | Adequate |
| Play provision - total | 31 | 3.88 | 0.14 | 5.09 | 0.18 | -1.21 | -0.04 | Shortfall |
| Allotments | 2 | 4.95 | 0.17 | 12.45 | 0.44 | -7.50 | -0.27 | Shortfall |
| Outdoor sports facilities | 8 | 17.67 | 0.62 | 28.57 | 1.01 | -10.90 | -0.39 | Shortfall |
| TOTAL | 202 | 144.72 | 5.12 | 161.54 | 5.71 | -16.82 | -0.59 | Shortfall |

* Natural/semi natural green space public

25 53.15

* Natural/semi natural green space private

6 14.37

* Green corridors

12 4.23

**Churchyards & cemeteries

36 8.99

**Informal amenity open space public

49 15.22

**Informal amenity open space private

26 13.73

School grounds

12 20.03

ACCESS TO OPEN SPACE

An assessment has been made of the accessibility of residents of this sub area to a range of more local facilities. Accessibility to strategic facilities, such as sports halls and swimming pools and larger parks and gardens is dealt with in Part 1.

In general, accessibility to these facilities is good, though there are gaps (see accompanying map).

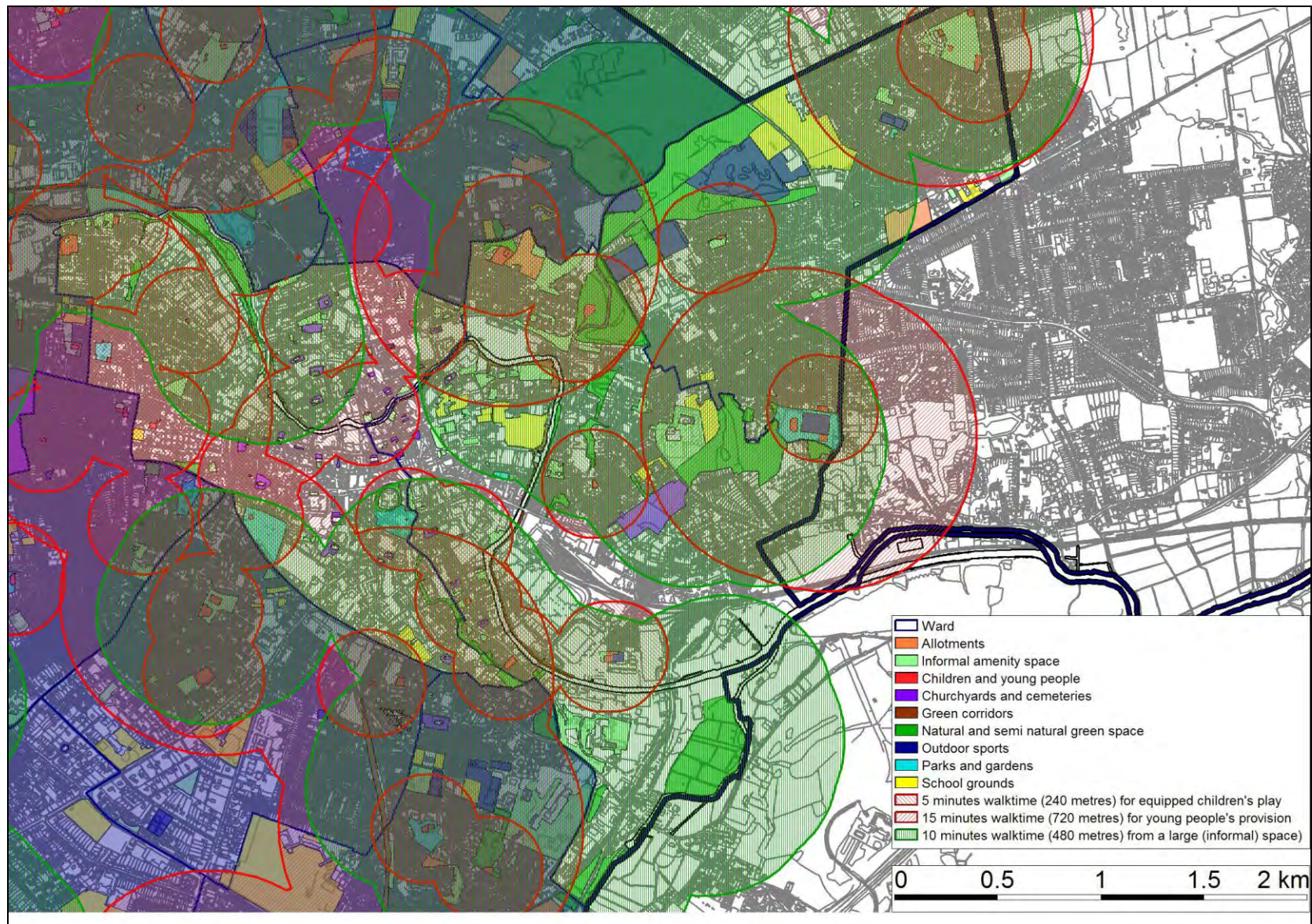
Most of the sub area is within 10 minutes' walking time of larger informal amenity open spaces, which are well distributed, throughout the area.

Access to children's play facilities is less good and there are significant gaps in provision, and there are also deficiencies in access to teenagers' play including games areas and skateparks.

Outdoor sports facilities are present mainly in the northeast part of the sub area, but walking access from large parts of the area (including the city centre) are limited.

Access to allotments within reasonable walking time is similarly restricted especially from the city centre and south of the area.

The presence of large areas of natural and semi natural green space such as Mousehold Heath and the river valley, together with Cottage Plantation and other areas in adjacent Broadland, gives good accessibility to such areas.



QUALITY OF OPEN SPACE

The overall quality of open space in the east sub area is better than the Norwich average. In particular:

- Parks and gardens are slightly below average, ranging from Castle Gardens and Green (84%) to Woodrow Pilling Park (56%).
- Natural and semi natural green space is slightly better than the average, although like all areas, it scores lower than other types of open space. The Yacht station is the best public natural green space, but there are poor sites at Carrow Bridge, St James Hollow and The Wilderness. Private green space is of a higher quality overall, with Gas Hill Wood the best site (79%) and Trowse Marshes the worst (53%). The Riverside Walks green corridor is generally considered to be of a high quality, though there are variations between the Barn Road – Dolphin Bridge and Foundry Bridge - Bishops Bridge sections (which score 80%+) and the Duke Street – Coslany Street section (49%).
- Informal amenity open is generally better quality than the city average, though the presence of so many churchyards (with relatively good standards of upkeep and maintenance) does inflate the scores (75% overall for churches and cemeteries). Amenity open space in the public domain scores lowest (64%, and there are particularly poor sites at Lionwood Road, Wellington Green and Witard Road. Open space in private ownership is of a higher quality, and includes areas such as the Cathedral Close, Great Hospital and city centre areas where there are good standards of maintenance and de facto public access.
- Play provision in this sub area scores highest of all and exceeds the city average significantly. There are particularly good private facilities at Carrow Park, and local authority play areas such as St George's Street, Music House Lane, Dyers Yard and Marion Road.
- Allotments are above average quality, particularly Cottage Farm.
- The quality of outdoor sports facilities is poor compared with the city average, despite excellent private facilities at Carrow Park. None of the other sites is above average for the city, and Woodrow Pilling Park in particular scores lowly (56%). The quality of local authority changing rooms in this area is poor, and the Fountain Ground and Britannia Barracks require substantial improvement.

| | Sub area average | Norwich average |
|---|------------------|-----------------|
| Parks and gardens | 69.2% | 70.9% |
| Natural and semi natural green space | 63.2% | 61.1% |
| Informal amenity open space | 71.5% | 69.2% |
| Play provision for children and young people | 80.1% | 77.3% |
| Allotments | 73.3% | 68.3% |
| Outdoor sports facilities and 'recreation grounds' | 68.7% | 73.1% |
| Total | 70.9% | 68.6% |

STRATEGIC PRIORITIES

- Because of the shortfall of open space in this sub area, particularly if private land is excluded, the priority should be to ensure that additional provision of open space in general is made in conjunction with new development. However, the difficulties of achieving this are not minimised by the densely built up nature of this part of Norwich, particularly in Mancroft and Thorpe Hamlet wards.
- Natural green space, informal amenity open space and outdoor sports areas should be retained as a general policy, though there may be small areas of open and green space which is in poor condition and of low public value which could be considered for disposal, in order to ensure protection and enhancement of open space elsewhere. It is unlikely that significant new areas of open space could be provided and every opportunity should be taken to secure public access to land in private or school ownership to minimise the shortfalls. In particular there are a number of school sites (especially the Heartsease schools but also those in Thorpe Hamlet) where pitches and other sports facilities could be brought into more secure community use. Sale Road/Heartsease Towers is a large area of informal open space, formerly used for sport, which could be converted in part or whole for this purpose again in the future, if the demand arises.
- The quality of open space in this area is generally good, but opportunities should be taken to make improvements to sites that have been identified in the database as poor. Similarly there are changing and other ancillary facilities at local authority sports grounds where investment in new and upgraded buildings would enhance the use of the site for sport.
- The rationalisation of schools in this area may leave areas of open space no longer required for their original school purpose, and alternative uses for another type of open space to benefit the community should be considered before any site is redeveloped. In particular the schools at Woodside and Wellesley have existing open space on site that could fulfil a wider community need.

DATABASE

| Ha | URL | LOCATION | WARD | CATEGORY | Quality % |
|------|------|----------------------|---------------|----------------------------|-----------|
| 2.82 | CR08 | COTTAGE FARM | Crome | Allotments | 80.0 |
| 2.13 | TH36 | MOUSEHOLD SOUTH | Thorpe Hamlet | Allotments | 66.6 |
| 4.95 | | | | | 73.3 |
| 0.20 | CR35 | WOODROW PILLING PARK | Crome | Children and YP BMX | 77.7 |
| 0.12 | TH09 | CARROW PARK | Thorpe Hamlet | Children and YP MUGA | 100.0 |
| 0.07 | CR14 | HEARTSEASE TOWERS | Crome | Children and YP MUGA | 75.0 |
| 0.07 | TH25 | KETTS CAVE | Thorpe Hamlet | Children and YP MUGA | 85.7 |
| 0.15 | CR34 | WOODROW PILLING PARK | Crome | Children and YP MUGA | 72.7 |
| 0.05 | CR15 | HEARTSEASE TOWERS | Crome | Children and YP Skateboard | 73.6 |
| 0.31 | TH59 | ST JAMES HOLLOW | Thorpe Hamlet | Children and YP Skateboard | 69.5 |
| 0.99 | | | | | 79.2 |
| 0.21 | TH79 | ARGYLE STREET | Thorpe Hamlet | Children and YP Play | 68.1 |
| 0.07 | CR05 | BORROWDALE DRIVE | Crome | Children and YP Play | 87.2 |
| 0.09 | TH12 | CARROW PARK | Thorpe Hamlet | Children and YP Play | 97.6 |
| 0.01 | M12 | CASTLE GREEN | Mancroft | Children and YP Play | 76.2 |
| 0.04 | M15 | CHAPELFIELD GARDENS | Mancroft | Children and YP Play | 82.5 |
| 0.01 | M17 | CHESTNUT COURT | Mancroft | Children and YP Play | 87.0 |
| 0.11 | M21 | DOURO PLACE | Mancroft | Children and YP Play | 65.9 |
| 0.02 | M22 | DYERS YARD | Mancroft | Children and YP Play | 91.4 |
| 0.12 | M23 | EAGLE BATHS | Mancroft | Children and YP Play | 62.7 |
| 0.02 | M28 | GILDENCROFT | Mancroft | Children and YP Play | 90.6 |
| 0.10 | CR16 | HEARTSEASE 1 | Crome | Children and YP Play | 74.4 |
| 0.23 | CR17 | HEARTSEASE 2 | Crome | Children and YP Play | 70.5 |
| 0.03 | M30 | HEIGHAM STREET | Mancroft | Children and YP Play | 86.0 |
| 0.57 | TH27 | KETTS CAVE | Thorpe Hamlet | Children and YP Play | 78.4 |
| 0.03 | M33 | LEONARD STREET | Mancroft | Children and YP Play | 76.7 |

| | | | | | |
|------|------|---------------------------------|---------------|--------------------------|------|
| 0.09 | TH34 | MARION ROAD | Thorpe Hamlet | Children and YP Play | 92.1 |
| 0.07 | TH37 | MUSIC HOUSE LANE | Thorpe Hamlet | Children and YP Play | 97.8 |
| 0.74 | M75 | ST BARTHOLOMEW'S | Mancroft | Children and YP Play | 62.8 |
| 0.04 | TH64 | ST PARMENTERGATE COURT | Thorpe Hamlet | Children and YP Play | 74.5 |
| 0.02 | M76 | ST. GEORGES STREET | Mancroft | Children and YP Play | 94.4 |
| 0.00 | M78 | ST. MARGARET'S CHURCH YARD | Mancroft | Children and YP Play | 82.9 |
| 0.08 | M79 | ST. PAUL'S | Mancroft | Children and YP Play | 79.5 |
| 0.04 | M87 | WESTEND STREET GARDENS | Mancroft | Children and YP Play | 78.5 |
| 0.16 | CR36 | WOODROW PILLING PARK | Crome | Children and YP Play | 70.5 |
| 2.89 | | | | | 80.3 |
| 0.09 | M01 | ALL SAINTS | Mancroft | Churchyards & cemeteries | 84.1 |
| 0.36 | M26 | FRIENDS BURIAL GROUND | Mancroft | Churchyards & cemeteries | 69.0 |
| 0.02 | M32 | JEWISH CEMETERY | Mancroft | Churchyards & cemeteries | 69.0 |
| 0.06 | M43 | OLD MEETING HOUSE | Mancroft | Churchyards & cemeteries | 80.6 |
| 0.07 | M46 | PUPPET THEATRE | Mancroft | Churchyards & cemeteries | 81.6 |
| 0.03 | M46A | PUPPET THEATRE | Mancroft | Churchyards & cemeteries | 81.6 |
| 4.93 | TH50 | ROSARY | Thorpe Hamlet | Churchyards & cemeteries | 78.3 |
| 0.07 | M52 | ST ANDREWS | Mancroft | Churchyards & cemeteries | 70.3 |
| 0.29 | M53 | ST AUGUSTINE'S | Mancroft | Churchyards & cemeteries | 84.1 |
| 0.17 | M55 | ST BENEDICTS (WELLINGTON GROVE) | Mancroft | Churchyards & cemeteries | 60.7 |
| 0.07 | M56 | ST CLEMENTS | Mancroft | Churchyards & cemeteries | 77.3 |
| 0.04 | M57 | ST EDMUNDS (FISHERGATE) | Mancroft | Churchyards & cemeteries | 67.6 |
| 0.12 | TH53 | ST ETHELREDA'S | Thorpe Hamlet | Churchyards & cemeteries | 65.0 |
| 0.12 | TH54 | ST GEORGE (TOMBLAND) | Thorpe Hamlet | Churchyards & cemeteries | 81.8 |
| 0.07 | M58 | ST GEORGES (COLEGATE) | Mancroft | Churchyards & cemeteries | 72.5 |
| 0.34 | M60 | ST GILES | Mancroft | Churchyards & cemeteries | 93.0 |
| 0.06 | M61 | ST GREGORY'S | Mancroft | Churchyards & cemeteries | 82.9 |
| 0.16 | M62 | ST JOHN DE SEPULCHRE | Mancroft | Churchyards & cemeteries | 70.0 |
| 0.04 | M63 | ST JOHN MADDERMARKE | Mancroft | Churchyards & cemeteries | 70.3 |
| 0.08 | M64 | ST JOHN THE BAPTIST | Mancroft | Churchyards & cemeteries | 85.0 |

| | | | | | |
|------|-------|---|---------------|--------------------------|------|
| 0.09 | TH60 | ST JULIAN'S | Thorpe Hamlet | Churchyards & cemeteries | 86.7 |
| 0.03 | M66 | ST LAURENCE'S | Mancroft | Churchyards & cemeteries | 60.0 |
| 0.10 | M67 | ST MARGARET'S | Mancroft | Churchyards & cemeteries | 79.5 |
| 0.04 | M67A | ST MARGARET'S | Mancroft | Churchyards & cemeteries | 79.5 |
| 0.13 | TH61 | ST MARTIN AT PALACE PLAIN | Thorpe Hamlet | Churchyards & cemeteries | 63.4 |
| 0.12 | M68 | ST MARTINS | Mancroft | Churchyards & cemeteries | 59.1 |
| 0.19 | M69 | St Mary's | Mancroft | Churchyards & cemeteries | 67.5 |
| 0.15 | M70 | ST MICHAEL AT COSLANY | Mancroft | Churchyards & cemeteries | 72.7 |
| 0.07 | TH63 | ST MICHAEL AT PLEAS | Thorpe Hamlet | Churchyards & cemeteries | 88.2 |
| 0.06 | TH65 | ST PETER HUNGATE | Thorpe Hamlet | Churchyards & cemeteries | 75.6 |
| 0.17 | M71 | ST PETER MANCROFT | Mancroft | Churchyards & cemeteries | 78.4 |
| 0.21 | TH66 | ST PETER PARMENTERGATE | Thorpe Hamlet | Churchyards & cemeteries | 72.7 |
| 0.06 | M72 | ST SAVIOURS | Mancroft | Churchyards & cemeteries | 64.9 |
| 0.05 | TH67 | ST SIMON & JUDE | Thorpe Hamlet | Churchyards & cemeteries | 87.2 |
| 0.30 | M73 | ST STEPHENS | Mancroft | Churchyards & cemeteries | 77.5 |
| 0.03 | M74 | ST SWITHIN'S | Mancroft | Churchyards & cemeteries | 71.1 |
| 8.99 | | | | | 75.2 |
| 0.67 | M36 | MARRIOTS WAY A - BARN ROAD-DOLPHIN BRIDGE | Mancroft | Green corridors | 81.5 |
| 0.90 | TH42 | RIVERSIDE WALK - BISHOPS BRIDGE - ST HELENS WHARF | Thorpe Hamlet | Green corridors | 84.0 |
| 0.49 | TH43 | RIVERSIDE WALK - CARROW BRIDGE | Thorpe Hamlet | Green corridors | 58.6 |
| 0.68 | TH45 | RIVERSIDE WALK - CARROW BRIDGE - FOUNDRY BRIDGE | Thorpe Hamlet | Green corridors | 76.7 |
| 0.12 | M47 | RIVERSIDE WALK - COSLANY ST-NEW MILLS | Mancroft | Green corridors | 57.1 |
| 0.05 | M48 | RIVERSIDE WALK - DUKE ST - COSLANY ST | Mancroft | Green corridors | 48.7 |
| 0.29 | TH46 | RIVERSIDE WALK - FOUNDRY BRIDGE - BISHOPS BRIDGE | Thorpe Hamlet | Green corridors | 80.0 |
| 0.24 | TH46A | RIVERSIDE WALK - FOUNDRY BRIDGE - BISHOPS BRIDGE | Thorpe Hamlet | Green corridors | 80.0 |
| 0.04 | TH47 | RIVERSIDE WALK - FYE BRIDGE ST - ST GEORGES ST | Thorpe Hamlet | Green corridors | 61.5 |

| | | | | | |
|------|------|--|---------------|---------------------------------|------|
| 0.25 | M49 | RIVERSIDE WALK - NEW MILLS - ST CRISPIN'S | Mancroft | Green corridors | 71.7 |
| 0.34 | TH48 | RIVERSIDE WALK - ST HELENS WHARF - WHITEFRIARS | Thorpe Hamlet | Green corridors | 75.5 |
| 0.16 | TH49 | RIVERSIDE WALK - WHITEFRIARS - FYE BRIDGE STREET | Thorpe Hamlet | Green corridors | 64.5 |
| 4.23 | | | | | 70.0 |
| 0.26 | TH01 | ABBEY LANE | Thorpe Hamlet | Informal amenity open space NCC | 50.0 |
| 0.09 | TH02 | ALL HALLOWS | Thorpe Hamlet | Informal amenity open space NCC | 53.5 |
| 0.06 | TH78 | ARGYLE STREET | Thorpe Hamlet | Informal amenity open space NCC | 58.3 |
| 0.40 | M05 | BAKERS ROAD | Mancroft | Informal amenity open space NCC | 75.0 |
| 0.06 | CR03 | BARCLAY ROAD | Crome | Informal amenity open space NCC | 60.7 |
| 0.07 | M06 | BARGATE COURT | Mancroft | Informal amenity open space NCC | 57.1 |
| 0.17 | M07 | BARN ROAD 1 | Mancroft | Informal amenity open space NCC | 74.0 |
| 0.26 | M08 | BARN ROAD 2 | Mancroft | Informal amenity open space NCC | 66.6 |
| 0.10 | TH03 | BISHOPS GATE | Thorpe Hamlet | Informal amenity open space NCC | 61.9 |
| 0.30 | CR04 | BORROWDALE DRIVE | Crome | Informal amenity open space NCC | 57.1 |
| 0.35 | TH04 | CAMP GROVE | Thorpe Hamlet | Informal amenity open space NCC | 68.7 |
| 1.02 | TH05 | CANNELL GREEN | Thorpe Hamlet | Informal amenity open space NCC | 64.5 |
| 0.09 | M16 | CHARLTON COURT | Mancroft | Informal amenity open space NCC | 67.8 |
| 0.05 | M18 | CITY HALL ST GILES | Mancroft | Informal amenity open space NCC | 67.8 |
| 0.13 | TH19 | ELM HILL GARDENS | Thorpe Hamlet | Informal amenity open space NCC | 69.5 |
| 0.23 | M25 | FISHERGATE OPEN SPACE | Mancroft | Informal amenity open space NCC | 80.9 |
| 0.44 | M29 | GILDENCROFT PARK | Mancroft | Informal amenity open space NCC | 63.0 |
| 4.16 | CR13 | HEARTSEASE TOWERS (SALE ROAD) | Crome | Informal amenity open space NCC | 65.6 |
| 2.55 | TH22 | HEATHGATE | Thorpe Hamlet | Informal amenity open space NCC | 70.9 |
| 0.03 | TH23 | HORSEFAIR | Thorpe Hamlet | Informal amenity open space NCC | 60.7 |
| 0.12 | TH26 | KETTS CAVE | Thorpe Hamlet | Informal amenity open space NCC | 53.3 |
| 0.04 | M34 | LEOPARD COURT | Mancroft | Informal amenity open space NCC | 70.9 |
| 0.11 | CR20 | LIONWOOD ROAD | Crome | Informal amenity open space NCC | 44.0 |
| 0.04 | M35 | MAGDALEN CLOSE | Mancroft | Informal amenity open space NCC | 70.9 |
| 0.09 | M35A | MAGDALEN CLOSE | Mancroft | Informal amenity open space NCC | 70.9 |

| | | | | | |
|-------|------|-------------------------------|---------------|-------------------------------------|------|
| 0.25 | TH35 | MARKET AVENUE | Thorpe hamlet | Informal amenity open space NCC | 71.4 |
| 0.62 | M38 | MIDLAND STREET OPEN SPACE | Mancroft | Informal amenity open space NCC | 71.4 |
| 0.09 | M39 | MILE CROSS ROAD | Mancroft | Informal amenity open space NCC | 67.7 |
| 0.08 | CR21 | MORSE ROAD | Crome | Informal amenity open space NCC | 54.8 |
| 0.32 | CR25 | MUNNINGS ROAD | Crome | Informal amenity open space NCC | 87.0 |
| 0.07 | TH83 | NORMANDIE TOWER | Thorpe Hamlet | Informal amenity open space NCC | 64.2 |
| 0.14 | M44 | PARAGON PLACE | Mancroft | Informal amenity open space NCC | 79.4 |
| 0.07 | M45 | PITT STREET OPEN SPACE | Mancroft | Informal amenity open space NCC | 60.0 |
| 0.48 | CR27 | RIDER HAGGARD ROAD OPEN SPACE | Crome | Informal amenity open space NCC | 71.0 |
| 0.10 | TH51 | SHERBOURNE PLACE | Thorpe Hamlet | Informal amenity open space NCC | 57.1 |
| 0.08 | M51 | SILVER ROAD TOWER | Mancroft | Informal amenity open space NCC | 52.3 |
| 0.05 | CR28 | SKELTON ROAD | Crome | Informal amenity open space NCC | 69.6 |
| 0.25 | TH52 | SPITALFIELDS | Thorpe Hamlet | Informal amenity open space NCC | 66.6 |
| 0.04 | M54 | ST BARTHOLOMEW'S | Mancroft | Informal amenity open space NCC | 73.8 |
| 0.16 | M59 | ST GEORGES STREET OPEN SPACE | Mancroft | Informal amenity open space NCC | 76.2 |
| 0.09 | TH55 | ST JAMES CLOSE 2 | Thorpe Hamlet | Informal amenity open space NCC | 65.2 |
| 0.18 | TH56 | ST JAMES CLOSE 3 | Thorpe Hamlet | Informal amenity open space NCC | 68.0 |
| 0.06 | M77 | ST. GREGORY'S ALLEY | Mancroft | Informal amenity open space NCC | 57.1 |
| 0.05 | M81 | TALBOT SQUARE | Mancroft | Informal amenity open space NCC | 61.2 |
| 0.05 | M84 | WELLINGTON GREEN | Mancroft | Informal amenity open space NCC | 38.0 |
| 0.12 | M88 | Westwick Street | Mancroft | Informal amenity open space NCC | 62.0 |
| 0.13 | CR31 | WITARD ROAD | Crome | Informal amenity open space NCC | 48.0 |
| 0.06 | CR32 | WOMERSLEY ROAD | Crome | Informal amenity open space NCC | 78.2 |
| 0.46 | CR39 | WOODSIDE ROAD | Crome | Informal amenity open space NCC | 50.0 |
| 15.22 | | | | | 64.4 |
| 0.05 | M04 | ASSEMBLY ROOMS | Mancroft | Informal amenity open space private | 86.4 |
| 0.01 | M04A | ASSEMBLY ROOMS | Mancroft | Informal amenity open space private | 86.4 |
| 2.35 | TH06 | CARROW ABBEY | Thorpe Hamlet | Informal amenity open space private | NK |
| 1.76 | TH08 | CARROW HOUSE | Thorpe Hamlet | Informal amenity open space private | 93.7 |
| 0.10 | TH11 | CARROW PARK | Thorpe Hamlet | Informal amenity open space private | 83.3 |

| | | | | | |
|-------|-------|--|---------------|--|------|
| 0.06 | TH13 | CATHEDRAL - ALMARY GREEN | Thorpe Hamlet | Informal amenity open space private | 76.4 |
| 0.05 | TH13A | CATHEDRAL - ALMARY GREEN | Thorpe Hamlet | Informal amenity open space private | 76.4 |
| 0.25 | TH14 | CATHEDRAL - CLOISTERS | Thorpe Hamlet | Informal amenity open space private | 62.5 |
| 0.13 | TH15 | CATHEDRAL - LIFES GREEN | Thorpe Hamlet | Informal amenity open space private | 75.6 |
| 0.20 | TH16 | CATHEDRAL - LOWER CLOSE | Thorpe Hamlet | Informal amenity open space private | 66.6 |
| 0.50 | TH17 | CATHEDRAL - UPPER CLOSE | Thorpe Hamlet | Informal amenity open space private | 82.5 |
| 0.29 | TH18 | CROWN COURT (BISHOPGATE) | Thorpe Hamlet | Informal amenity open space private | 69.0 |
| 0.06 | M20 | DOUGHTY'S HOSPITAL (GOLDEN DOG LANE) | Mancroft | Informal amenity open space private | 71.7 |
| 0.51 | M27 | GIBRALTAR GARDENS | Mancroft | Informal amenity open space private | 84.2 |
| 0.20 | CR12 | HEARTSEASE PH | Crome | Informal amenity open space private | 60.5 |
| 0.29 | TH38 | NELSON HOTEL (MOUNTERGATE) | Thorpe Hamlet | Informal amenity open space private | 86.9 |
| 0.15 | M42 | OLD LAUNDRY COURT (WATERWORKS ROAD) | Mancroft | Informal amenity open space private | 80.0 |
| 0.04 | TH85 | ST ANDREWS HALL | Thorpe Hamlet | Informal amenity open space private | 65.0 |
| 0.48 | TH62 | ST MATTHEWS | Thorpe Hamlet | Informal amenity open space private | 86.4 |
| 0.18 | TH68 | THE GREAT HOSPITAL (BISHOPGATE) | Thorpe Hamlet | Informal amenity open space private | 90.4 |
| 0.39 | TH68A | THE GREAT HOSPITAL (BISHOPGATE) | Thorpe Hamlet | Informal amenity open space private | 90.4 |
| 0.08 | TH68B | THE GREAT HOSPITAL (BISHOPGATE) | Thorpe Hamlet | Informal amenity open space private | 90.4 |
| 0.11 | TH68C | THE GREAT HOSPITAL (BISHOPGATE) | Thorpe Hamlet | Informal amenity open space private | 90.4 |
| 1.12 | TH68D | THE GREAT HOSPITAL (BISHOPGATE) | Thorpe Hamlet | Informal amenity open space private | 90.4 |
| 4.29 | TH71 | THORPE HAMLET RESERVOIR (TELEGRAPH LANE) | Thorpe Hamlet | Informal amenity open space private | 86.6 |
| 0.08 | M85 | WEST END RETREAT PH (BROWNE ST) | Mancroft | Informal amenity open space private | 64.7 |
| 13.73 | | | | | 79.9 |
| 1.90 | CR07 | BRITANNIA ROAD/MONS AVENUE | Crome | Natural and semi natural green space NCC | 50.0 |
| 0.18 | TH07 | CARROW BRIDGE | Thorpe Hamlet | Natural and semi natural green space NCC | 45.0 |
| 0.59 | M13 | CASTLE MOUND | Mancroft | Natural and semi natural green space NCC | 56.6 |
| 0.56 | M19 | DOLPHIN GROVE | Mancroft | Natural and semi natural green space NCC | 70.0 |
| 0.45 | M24 | EARLHAM ROAD WOODS | Mancroft | Natural and semi natural green space NCC | 55.0 |
| 0.62 | TH20 | EUROPA WAY | Thorpe Hamlet | Natural and semi natural green space NCC | 57.6 |
| 4.85 | M31 | HORSFORD ST/STATION WOOD | Mancroft | Natural and semi natural green space NCC | 63.7 |

| | | | | | |
|-------|-------|----------------------------------|---------------|--|-------|
| 0.50 | TH28 | KETTS CAVE TREE BELT | Thorpe Hamlet | Natural and semi natural green space NCC | 50.0 |
| 1.39 | TH29 | KETTS HEIGHT | Thorpe Hamlet | Natural and semi natural green space NCC | 65.9 |
| 10.21 | TH33 | LION WOOD | Thorpe Hamlet | Natural and semi natural green space NCC | 71.8 |
| 0.14 | TH82 | LIONWOOD | Thorpe Hamlet | Natural and semi natural green space NCC | 71.8 |
| 0.28 | TH81 | LIONWOOD | Thorpe Hamlet | Natural and semi natural green space NCC | 71.8 |
| 12.06 | CR23 | MOUSEHOLD HEATH | Crome/Cat G | Natural and semi natural green space NCC | 66.7 |
| 0.24 | TH40 | OLD CROME WOOD | Thorpe Hamlet | Natural and semi natural green space NCC | 60.0 |
| 0.03 | TH41 | PETCHES CORNER | Thorpe hamlet | Natural and semi natural green space NCC | 64.5 |
| 0.16 | M50A | ROUEN ROAD TREE BELT (THE RIDGE) | Mancroft | Natural and semi natural green space NCC | 62.9 |
| 1.42 | TH84 | ROUEN ROAD TREE BELT (THE RIDGE) | Thorpe Hamlet | Natural and semi natural green space NCC | 62.9 |
| 5.16 | TH57 | ST JAMES HILL | Thorpe Hamlet | Natural and semi natural green space NCC | NK |
| 2.98 | TH58 | ST JAMES HOLLOW | Thorpe Hamlet | Natural and semi natural green space NCC | 50.0 |
| 0.59 | M82 | THE WILDERNESS | Mancroft | Natural and semi natural green space NCC | 44.1 |
| 0.37 | TH72 | THORPE LIBRARY SITE | Thorpe Hamlet | Natural and semi natural green space NCC | 76.5 |
| 1.10 | TH73 | TROWSE BY PASS | Lak/Th Ham | Natural and semi natural green space NCC | 65.0 |
| 6.71 | CR29 | VALLEY DRIVE | Crome | Natural and semi natural green space NCC | 56.7 |
| 0.13 | M83 | WATSON GROVE | Mancroft | Natural and semi natural green space NCC | 60.0 |
| 0.52 | TH77 | YACHT STATION | Thorpe Hamlet | Natural and semi natural green space NCC | 80.9 |
| 53.15 | | | | | 59.2 |
| 0.91 | TH21 | GAS HILL WOOD (GAS HILL) | Thorpe Hamlet | Natural and semi natural green space private | 79.4 |
| 0.71 | TH80 | HOLMWOOD WOODS (HOLMWOOD CLOSE) | Thorpe Hamlet | Natural and semi natural green space private | 70.0 |
| 11.18 | TH75 | TROWSE MARSHES | Thorpe hamlet | Natural and semi natural green space private | 52.9 |
| 0.76 | TH76 | TROWSE MILL | Thorpe Hamlet | Natural and semi natural green space private | 65.0 |
| 0.06 | TH76A | TROWSE MILL | Thorpe Hamlet | Natural and semi natural green space private | 65.0 |
| 0.76 | TH76B | TROWSE MILL | Thorpe Hamlet | Natural and semi natural green space private | 65.0 |
| 14.37 | | | | | 66.2 |
| 0.63 | CR02 | ALDERMAN WALKER | Crome | Outdoor Sport | 62.7 |
| 2.18 | CR06 | BRITANNIA BARRACKS | Crome | Outdoor Sport | 63.1 |
| 0.22 | TH10 | CARROW PARK | Thorpe Hamlet | Outdoor Sport | 100.0 |
| 1.42 | CR09 | FOUNTAIN SPORTS GROUND | Crome | Outdoor Sport | 66.7 |

| | | | | | |
|-------|-------|-------------------------------------|---------------|-------------------|------|
| 1.35 | CR22 | MOUNT ZION CHURCH (HEARTSEASE LANE) | Crome | Outdoor Sport | 61.2 |
| 8.53 | CR24 | MOUSEHOLD HEATH PITCH & PUTT | Crome | Outdoor Sport | 71.4 |
| 2.12 | CR26 | NORWICH PRISON | Crome | Outdoor Sport | NK |
| 1.23 | CR37 | WOODROW PILLING PARK | Crome | Outdoor Sport | 56.1 |
| 17.67 | | | | | 68.7 |
| 0.11 | CR01 | ALDERMAN WALKER | Crome | Parks and gardens | 62.7 |
| 2.01 | M11 | CASTLE GARDENS/GREEN | Mancroft | Parks and Gardens | 83.5 |
| 3.22 | M14 | CHAPELFIELD GARDENS | Mancroft | Parks and gardens | 71.0 |
| 0.19 | TH24 | JAMES STUART GARDENS | Thorpe Hamlet | Parks and gardens | 77.6 |
| 0.07 | M37 | MEMORIAL GARDENS | Mancroft | Parks and gardens | 57.1 |
| 0.63 | M86 | WEST END STREET GARDENS | Mancroft | Parks and gardens | 76.2 |
| 2.31 | CR33 | WOODROW PILLING PARK | Crome | Parks and gardens | 56.1 |
| 8.53 | | | | | 69.2 |
| 1.92 | CR10 | HEARTSEASE FS & MS/PS | Crome | School grounds | |
| 6.41 | CR11 | HEARTSEASE HS | Crome | School grounds | |
| 2.00 | CR11A | HEARTSEASE HS PLAYING FIELDS | Crome | School grounds | |
| 3.52 | TH39 | NORWICH SCHOOL | Thorpe Hamlet | School grounds | |
| 0.42 | TH39A | NORWICH SCHOOL | Thorpe Hamlet | School grounds | |
| 0.98 | TH39B | NORWICH SCHOOL | Thorpe Hamlet | School grounds | |
| 1.19 | M41 | NOTRE DAME HS | Mancroft | School grounds | |
| 0.27 | M65 | ST JOHNS FS/IS | Mancroft | School grounds | |
| 0.57 | TH69 | THORPE HAMLET FS/LIONWOOD IS | Thorpe Hamlet | School grounds | |
| 1.82 | TH70 | THORPE HAMLET MS/LIONWOOD JS | Thorpe Hamlet | School grounds | |
| 0.28 | CR30 | WELLESLEY FS | Crome | School grounds | |
| 0.65 | CR38 | WOODSIDE FS | Crome | School grounds | |
| 20.03 | | | | | |

NORWICH OPEN SPACE NEEDS ASSESSMENT

PART 2

AREA PROFILES



SUB AREA 4 SOUTH

CONTENTS

Page

Introduction

Map of Sub Area

Description of Sub Area

Quantity of open space

Access to open space

Quality of open space

Strategic Priorities 6
3

Database 7

8

10

12

13

14

INTRODUCTION

Area profiles

These area profiles form part of a larger study of open space and recreation facilities in Norwich City, using guidance provided under 'PPG 17', and should be read in context with the overall findings of the study (see Part 1).

The profiles give detail at a local level in relation to the provision of open space and recreational facilities by sub area.

Four sub areas have been identified across the City. Each sub area has been analysed using the proposed Norwich standards for open space, outlined in Part 1 of the report. The profiles include the following information:

- Relevant census data and other information about the area. This is important when considering the current and future needs of the population for open space provision
- Location and types of open space
- Quantity of open space
- Access to open space
- Quality of open space
- Strategic priorities for open space.

Typology

Part 1 of the report identifies the range of typologies for open space and sport and recreation facilities for which standards have been developed as follows:

- Parks and Gardens
- Natural and semi natural green space
- Green corridors
- Outdoor sports facilities and 'recreation grounds'
- Informal/amenity open space
- Provision for children and young people
- Allotment and community gardens
- Important indoor sports facilities
- Community halls

Quantity of open space

The quantity of open space in each sub area has been assessed against a standard for each typology recommended in Part 1 of the study as follows:

- | | |
|--|-------------------------|
| • Parks and Gardens | 0.62 ha per 1000 people |
| • Natural and semi natural green space (including green corridors) | 2.46 ha per 1000 people |
| • Informal/amenity open space | 1.0 ha per 1000 people |
| • Provision for children and young people | 0.16 ha per 1000 people |
| • Outdoor sports facilities and 'recreation grounds' | 1.01 ha per 1000 people |
| • Allotment and community gardens | 0.44 ha per 1000 people |

These standards have been applied at a local level to determine the provision of different types of open space across the adopted minimum standard, this is summarised in each profile, showing:

- the existing quantity of open space (existing provision)
- the required quantity of open space for the population of the area (required provision)
- the surplus or deficiency of open space
- Supply against the standard.

This is expressed as actual quantities of provision in hectares, and as provision per 1000 of the population, as hectares,

Quality of open space

The quality audit criteria have been built upon guidance provided in the 'PPG 17 companion guide', including criteria used as part of Green Flag, 'Raising the standard', Sport England's 'Towards a Level Playing Field.' Sites were given a generic assessment against a range of criteria (set out in Part 1). For all categories scores were given in relation to the maximum available for that category and are expressed as percentages.

Access to open space

Access to open space in each sub area has been assessed against a standard for each typology recommended in Part 1 of the study as follows:

- | | |
|--|---|
| • Parks and Gardens | Within 900m (larger parks), 600m pocket parks |
| • Natural and semi natural green space (including green corridors) | Within 600m |
| • Informal/amenity open space | Within 100m |
| • Provision for children and young people | Within 240m (young people), 720m (teenagers) |

- Outdoor sports facilities and 'recreation grounds' Within 3 kms
- Allotment and community gardens Within 600m

For each Sub Area, the following is shown in relation to access to open space:

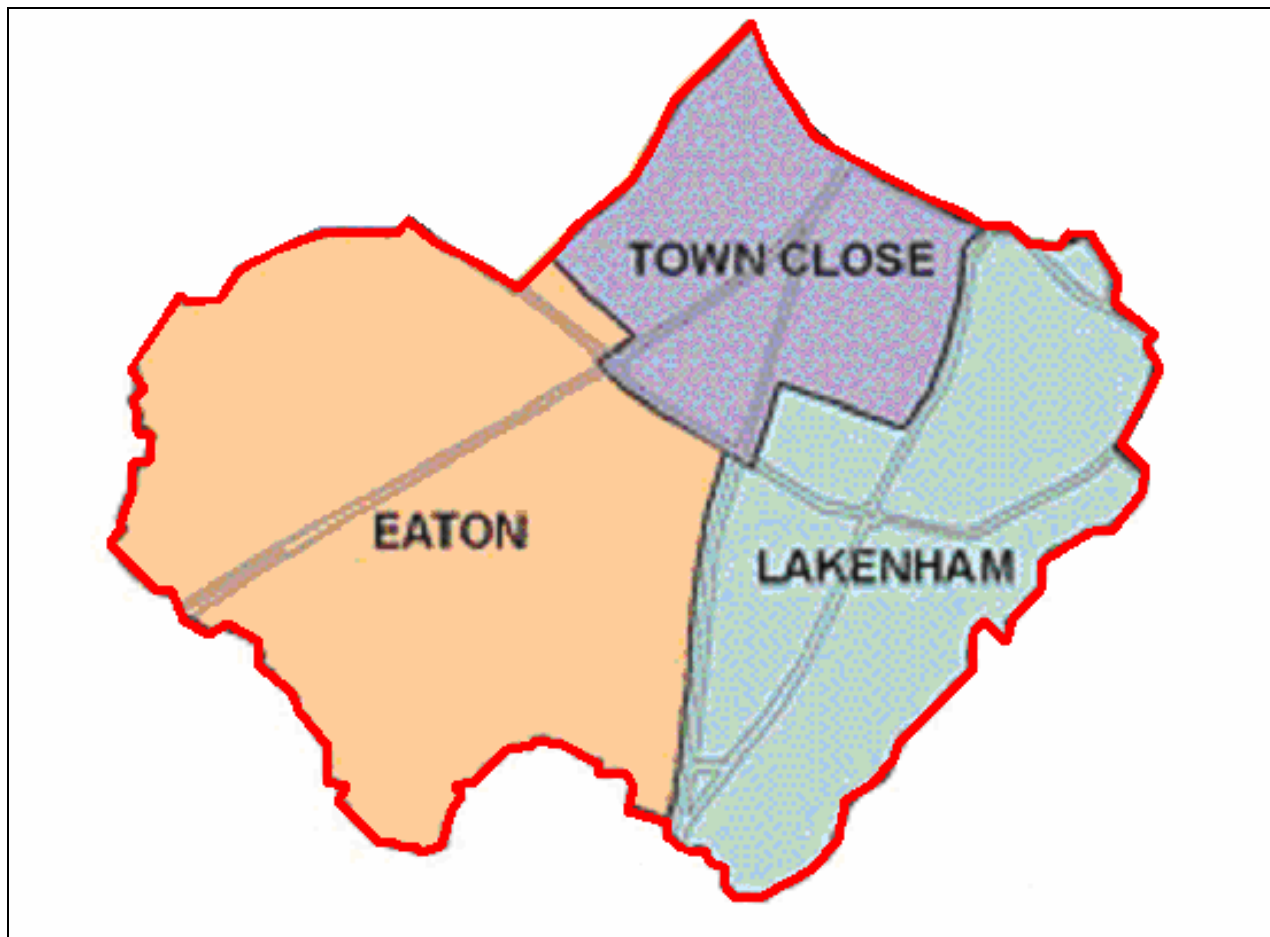
- a map showing access to the different types of open space against the access standards outlined above (not all open space is mapped to avoid unnecessary detail)
- observations related to access to each typology.

Using the database

The database that has been developed as part of the audit allows information to be interpreted in many ways, and it is specifically designed to be a 'working tool', which can be used for specific enquiries related to the provision and quality of open space as and when required.

These enquiries may be in the form of planning enquiries, for example to determine where developer contributions from a new development would be best directed in the area; or, they may help inform open space management decisions and priorities, for example determining where funding should be targeted or areas of open space which are in most need of improving.

MAP OF SUB AREA



DESCRIPTION OF SOUTH SUB AREA

Location

The south sub area comprises the wards of Eaton, Lakenham and Town Close. Eaton is a primarily residential ward, consisting primarily of private housing, but also with a significant proportion of social housing. Housing types, range from Victorian terraces and estates of semi-detached housing, to low density high price properties along and off the Newmarket Road, and include the 'village' of Eaton with modern estate housing separate from the remainder of the ward. Eaton is bounded by large areas of formal and informal open space. Lakenham extends from the edge of the city centre with its higher density terraced areas to social housing at Old Lakenham and Tuckswood, interspersed with employment and retailing areas, and has good access on its south east edge to the valley of the River Yare. Town Close is primarily private housing with higher density terraces, and larger detached properties in Mount Pleasant and Town Close itself, and very little publicly accessible open space

Population

The population of the wards in this sub area are as follows:

- Eaton 9270
- Lakenham 10040
- Town Close 10000
- Total

29310

QUANTITY OF OPEN SPACE

Like the west sub area, there is an overall adequacy of open space overall to meet recommended minimum standards. However if private open and green space and Eaton Golf Course is excluded, the situation changes radically to a significant shortfall. Most of the open space is in Eaton and Lakenham wards, and Town Close has limited access to facilities.

In terms of the individual typologies the following apply:

- Land classified as parks and gardens shows a significant shortfall of about 50% compared with the recommended minimum standard, though this is mitigated by the fact that much of the main park, Eaton Park, and the smaller parks (Harford, Jubilee and Lea Bridges Parks) are defined elsewhere in their primary use for sport, play and other open spaces.
- Provision for natural and semi natural green space exceeds the minimum recommended standard by about two thirds, though there is in fact a small shortfall if private land is excluded. There is excellent provision for natural green space in the public domain, and large amounts of private green space where public access is more limited.
- Informal amenity open space exceeds minimum recommended standards by 7ha, but 23 ha of such space is in 'private' ownership, albeit that 8 ha are at County Hall. There is therefore an actual shortfall of informal open space available to the public.
- There is a small shortfall in play provision of about 1ha, as elsewhere in Norwich.
- Allotments only meet about 50% of the recommended new minimum standard, and are distributed on 4 sites.
- At first sight, outdoor sports space easily meets the recommended minimum standard, but the total includes Eaton Golf Course (golf is not normally included in the standard) and Lakenham Sports & Leisure Club, which has recently closed. Without these facilities, existing provision amounts to about 17ha, which is significantly short of the minimum recommended standard
- There are 20 school sites comprising 49ha of school grounds, including main high school sites at Hewett School and CNS where regular sport already takes place, although this is not defined as in secured community use.

| SOUTH - Town Close, Eaton & Lakenham, population 29,310 | Number of sites | Existing quantity (ha) | Existing quantity (ha/1000) | Required quantity (ha) | Required quantity (ha/1000) | Balance (ha) | Balance (ha/1000) | Supply |
|--|----------------------------|---------------------------------------|--|---------------------------------------|--|-------------------------|------------------------------|-----------------|
| Parks & Gardens | 4 | 8.98 | 0.31 | 18.17 | 0.62 | -9.19 | -0.31 | Shortfall |
| Natural/semi natural green space – total* | 32 | 123.17 | 4.20 | 72.10 | 2.46 | 51.07 | 1.74 | Adequate |
| Informal amenity open space – total** | 47 | 36.61 | 1.25 | 29.31 | 1.00 | 7.30 | 0.25 | Adequate |
| Play provision - total | 22 | 4.29 | 0.15 | 5.28 | 0.18 | -0.99 | -0.03 | Shortfall |
| Allotments | 3 | 6.94 | 0.24 | 12.90 | 0.44 | -5.96 | -0.20 | Shortfall |
| Outdoor sports facilities | 10 | 61.80 | 2.11 | 29.60 | 1.01 | 32.20 | 1.10 | Adequate |
| TOTAL | 118 | 241.79 | 8.25 | 167.36 | 5.71 | 74.43 | 2.54 | Adequate |

* Natural/semi natural green space public

19 76.76

* Natural/semi natural green space private

9 39.34

* Green corridors

4 7.07

**Churchyards & cemeteries

4 2.04

**Informal amenity open space public

30 10.94

**Informal amenity open space private

13 23.63

School grounds

20 48.60

ACCESS TO OPEN SPACE

An assessment has been made of the accessibility of residents of this sub area to a range of more local facilities. Accessibility to strategic facilities, such as sports halls and swimming pools and larger parks and gardens is dealt with in Part 1.

In general, accessibility in this sub area is relatively restricted, particularly in Town Close ward where there is an abundance of higher density housing.

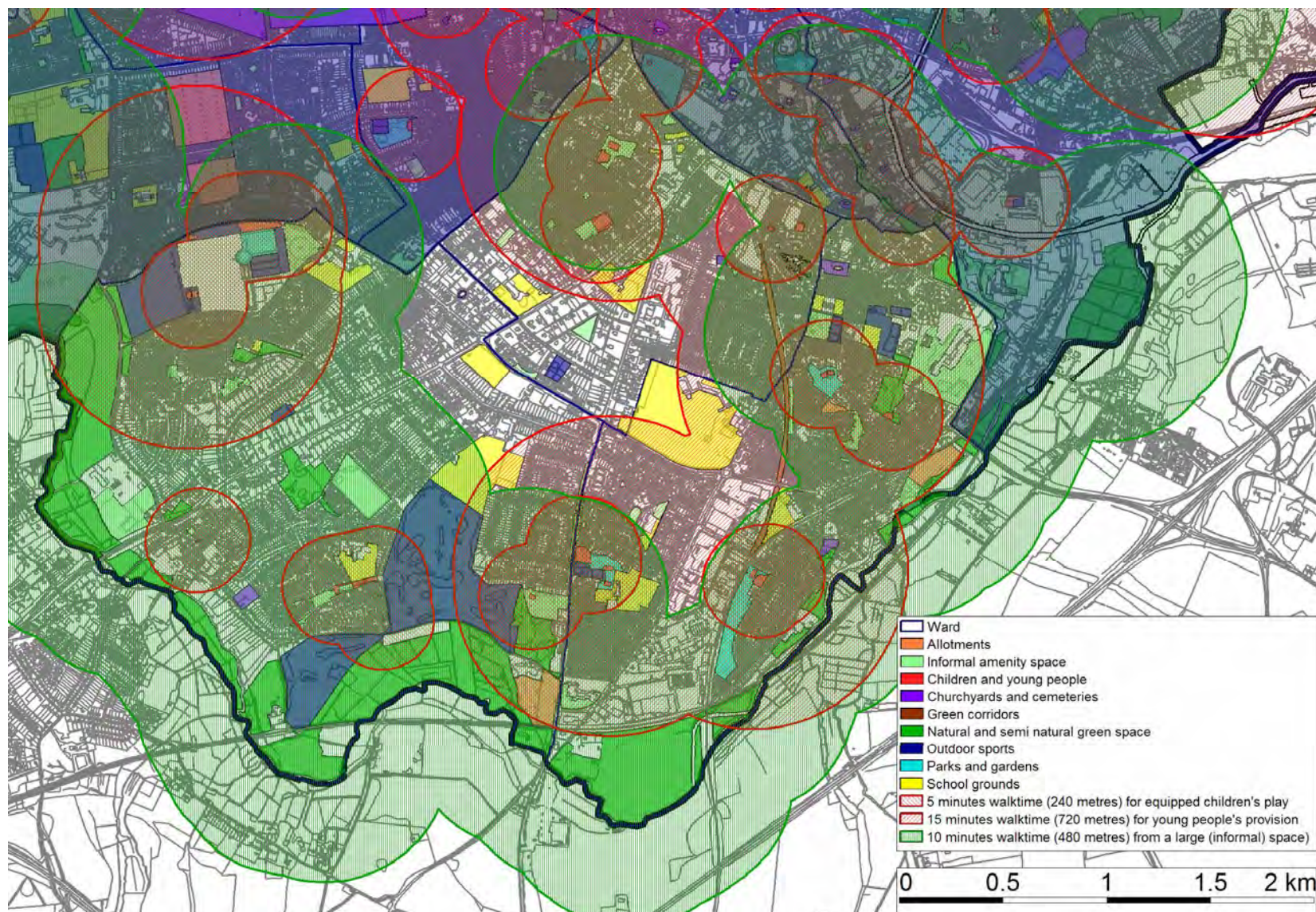
There is a large swathe of the land through the middle of the sub area where access to informal amenity open space is poor, though other areas are better served.

Access to children's play facilities is poor and the majority of the area lies outside a reasonable walking catchment to facilities. Similarly access to teenagers' facilities is restricted, and there are significant gaps in provision.

The availability of outdoor sports space is restricted mainly to Eaton Park which lies on the north west edge of the area, though there are smaller facilities in Lakenham, and some private facilities elsewhere.

Access to allotments within reasonable walking time is generally good

The proximity of the river valley gives good access to large areas of natural and semi natural green space, and to the wider countryside.



QUALITY OF OPEN SPACE

In general, the overall quality of open space in the south sub area is better than the Norwich average. In particular:

- Parks and gardens are slightly below average, most parks scoring similar, with Eaton Park slightly better.
- Natural and semi natural green space is significantly better than the average, and the best in the city. This is due in no small part to high quality 'private' natural green spaces (such as Cringleford Bridge Marsh and Eaton Lime Kilns) though there are also high quality green spaces in the public domain at Eaton Common and Marston Marsh in particular. The green corridor at Lakenham Way is also considered to rate highly (71%)
- Informal amenity open space is also better than the city average, mainly due to good quality churchyards, non public sites such as County Hall, Holiday Inn and Lakenham Reservoir, and some sites in the public domain, including Eaton Green, Ryrie Close, Lakenham Baths campsite and Southwold Road/Trafalgar Street housing area.
- Allotments are about average in quality, with better facilities at Harford Hills and Marston Lane, while Lakenham is considered less good.
- The quality of outdoor sports facilities is just below average. The best facilities are on private sites, particularly East Anglian Tennis and Squash Club, Trafford Road bowls green and Norfolk and Norwich Bowls Club. Lakenham Sports and Leisure Club scores poorly, but this is now closed, and the least good public area is Lakenham Rec (58%). The Eaton Park changing and ancillary facilities have recently been improved as part of an overall Lottery funded enhancement scheme in the park, and scores the highest of any local authority changing facilities in the city. There is, however, a lack of disabled access.

| | Sub area average | Norwich average |
|--|------------------|-----------------|
| Parks and gardens | 69.9% | 70.9% |
| Natural and semi natural green space | 66.9% | 61.1% |
| Informal amenity open space | 70.7% | 69.2% |
| Play provision for children and young people | 79.8% | 77.3% |
| Allotments | 68.6% | 68.3% |
| Outdoor sports facilities and 'recreation grounds' | 71.8% | 73.1% |
| Total | 70.5% | 68.6% |

STRATEGIC PRIORITIES

- Although the quantity of open space in the south sub area easily meets minimum recommended standards, much is privately owned with limited or no assured public access. All open space in this area should therefore be retained where it has a value for the local community and meets a local demand.
- There are particular shortfalls of parks and gardens, play areas and facilities, allotments and (if Eaton Golf Course is excluded) outdoor sports facilities. Additional play provision should be sought in conjunction with new development. As in most sub areas in a densely urban city like Norwich, the shortage of outdoor sports space is unlikely to be met in full by means of additional provision, but could be mitigated by more intensive use of Eaton Park, where there is space for many more pitches, courts and greens, as in former years. In addition, subject to the schools agreement, more community access could be secured to pitches at CNS, Hewett and other schools - some community sport already takes place. Qualitative improvements to pitches and changing may be required.
- The quality of open space in this area is generally higher than the Norwich average, with minor exceptions for parks and gardens and outdoor sport. Sites identified in the database as poor quality should be improved in accordance with the criteria set out in the sites quality database.
- There are a number of former school sites where as the result of recent school reorganisation and rationalisation, former playing fields and other types of open space is now surplus to educational requirements. In particular South Harford Middle School has extensive playing fields, demand for the use of which has been identified by local clubs. Before proposals to redevelop the site are approved, the contribution that this site can make to meeting existing shortfalls in the area should be considered, in accordance with the guidance in PPG17.
- The recent closure of the private Lakenham Leisure and Sports Club has left a gap in the provision of indoor and outdoor tennis facilities in the Norwich area, (and particularly in the city). The overall site was also formerly the venue for senior football and county cricket. As the site's last use was for sport, proposals for its reuse should be based on a reinstatement of outdoor sport or another open space use, particularly in view of the current shortfall, irrespective of any other planning considerations such as access.
- Accessibility to open space throughout this sub area is a particular issue, and enhanced access to open space in and from the Town Close ward is a priority.

DATABASE

| URL | Ha | LOCATION | WARD | CATEGORY | Quality % |
|------|------|----------------------------|------------|--------------------------------|-----------|
| E37 | 4.10 | HARFORD HILLS/MARSTON LANE | Eaton | Allotments | 80.0 |
| L22 | 0.41 | LAKENHAM | Lakenham | Allotments | 59.2 |
| L23 | 2.43 | Lakenham Baths | Lakenham | Allotments | 66.6 |
| | 6.94 | | | | 68.6 |
| E33 | 0.07 | EATON PARK | Eaton | Children and YP Cycle speedway | 80.5 |
| L12 | 0.09 | HARFORD PARK | Lakenham | Children and YP Cycle speedway | 85.7 |
| E31 | 0.08 | EATON PARK | Eaton | Children and YP MUGA | 89.6 |
| L11 | 0.07 | HARFORD PARK | Lakenham | Children and YP MUGA | 92.8 |
| L20 | 0.07 | JUBILEE PARK | Lakenham | Children and YP MUGA | 93.7 |
| L37 | 0.11 | LEA BRIDGES PARK | Lakenham | Children and YP MUGA | 73.0 |
| TC11 | 0.18 | JENNY LIND | Town Close | Children and YP MUGA | 78.5 |
| E34 | 0.09 | EATON PARK | Eaton | Children and YP Skateboard | 54.8 |
| | | | | | |
| E01 | 0.01 | ABINGER WAY 1 | Eaton | Children and YP Play | 84.6 |
| E02 | 0.02 | ABINGER WAY 2 | Eaton | Children and YP Play | 81.4 |
| E07 | 0.02 | CHESTNUT HILL | Eaton | Children and YP Play | 79.0 |
| E16 | 0.07 | DANBY CLOSE | Eaton | Children and YP Play | 72.3 |
| E23 | 0.48 | EATON GREEN | Eaton | Children and YP Play | 62.5 |
| E32 | 0.75 | EATON PARK | Eaton | Children and YP Play | 78.7 |
| L13 | 0.55 | HARFORD PARK | Lakenham | Children and YP Play | 85.1 |
| L21 | 0.09 | JUBILEE PARK | Lakenham | Children and YP Play | 70.2 |
| L38 | 0.29 | LEA BRIDGES PARK | Lakenham | Children and YP Play | 77.2 |
| L42 | 0.12 | NETHERWOOD GREEN | Lakenham | Children and YP Play | 82.3 |
| TC02 | 0.08 | ASHBY STREET | Town Close | Children and YP Play | 76.7 |
| TC05 | 0.60 | EAGLE WALK | Town Close | Children and YP Play | 59.1 |
| TC09 | 0.16 | HOLLS LANE | Town Close | Children and YP Play | 85.1 |

| | | | | | |
|------|------|--------------------------------|------------------|---------------------------------|------|
| TC12 | 0.29 | JENNY LIND | Town Close | Children and YP Play | 84.1 |
| | 3.54 | | | | 77.0 |
| E08 | 0.06 | CHRIST CHURCH (EATON) | Eaton | Churchyards & cemeteries | 82.5 |
| E48 | 0.80 | ST ANDREWS (EATON) | Eaton | Churchyards & cemeteries | 73.6 |
| L49 | 0.44 | ST JOHN THE BAPTIST (LAKENHAM) | Lakenham | Churchyards & cemeteries | 82.4 |
| L50 | 0.73 | ST MARKS (LAKENHAM) | Lakenham | Churchyards & cemeteries | 70.2 |
| | 2.04 | | | | 77.2 |
| E52 | 3.43 | YARE VALLEY WALK | Eaton/University | Green corridors | 64.2 |
| L34 | 1.22 | LAKENHAM WAY | Lakenham | Green corridors | 71.4 |
| L35 | 0.81 | LAKENHAM WAY | Lakenham | Green corridors | 71.4 |
| TC13 | 1.60 | LAKENHAM WAY | Town Close | Green corridors | 71.4 |
| | 7.07 | | | | 69.6 |
| E15 | 2.17 | DANBY CLOSE | Eaton | Informal amenity open space NCC | 76.3 |
| E20 | 0.07 | EATON GARDENS 1 | Eaton | Informal amenity open space NCC | 60.0 |
| E21 | 0.08 | EATON GARDENS 2 | Eaton | Informal amenity open space NCC | 64.0 |
| E24 | 0.20 | EATON GREEN 1 | Eaton | Informal amenity open space NCC | 74.3 |
| E25 | 0.77 | EATON GREEN 2 | Eaton | Informal amenity open space NCC | 85.3 |
| E38 | 0.09 | IPSWICH ROAD/EATON RISE VERGE | Eaton | Informal amenity open space NCC | 79.1 |
| E38A | 0.26 | IPSWICH ROAD/EATON RISE VERGE | Eaton | Informal amenity open space NCC | 79.1 |
| E38B | 0.26 | IPSWICH ROAD/EATON RISE VERGE | Eaton | Informal amenity open space NCC | 79.1 |
| E46 | 0.30 | PECKOVER ROAD | Eaton | Informal amenity open space NCC | 57.6 |
| E47 | 0.67 | RYRIE CLOSE | Eaton | Informal amenity open space NCC | 82.8 |
| L03 | 0.06 | CAVELL ROAD SQUARE | Lakenham | Informal amenity open space NCC | 77.4 |
| L07 | 0.05 | HALL ROAD | Lakenham | Informal amenity open space NCC | 75.0 |
| L15 | 0.05 | HOBART SQUARE | Lakenham | Informal amenity open space NCC | 73.7 |
| L17 | 0.05 | IPSWICH ROAD O/S | Lakenham | Informal amenity open space NCC | 50.0 |
| L18 | 0.22 | IPSWICH ROAD/TUCKSWOOD VERGE | Lakenham | Informal amenity open space NCC | 66.6 |
| L24 | 1.10 | LAKENHAM BATHS CAMPSITE | Lakenham | Informal amenity open space NCC | 93.2 |
| L39 | 0.53 | MANSFIELD LANE | Lakenham | Informal amenity open space NCC | 70.0 |
| L40 | 0.10 | NETHERWOOD GREEN | Lakenham | Informal amenity open space NCC | 58.3 |

| | | | | | |
|------|-------|--------------------------------------|------------|--|------|
| L46 | 0.33 | SCARLET ROAD | Lakenham | Informal amenity open space NCC | 52.0 |
| L47 | 0.04 | SHERWOOD ROAD | Lakenham | Informal amenity open space NCC | 62.5 |
| L48 | 0.93 | SPRINGBANK | Lakenham | Informal amenity open space NCC | 57.1 |
| TC06 | 0.66 | EAGLE WALK | Town Close | Informal amenity open space NCC | 55.5 |
| TC10 | 1.22 | JENNY LIND | Town Close | Informal amenity open space NCC | 64.0 |
| TC14 | 0.07 | LION'S CAGE | Town Close | Informal amenity open space NCC | 80.6 |
| TC16 | 0.23 | PLANTSMAN CLOSE | Town Close | Informal amenity open space NCC | 72.0 |
| TC17 | 0.27 | SOUTHWELL RD / TRAFALGAR ST HOUSING | Town Close | Informal amenity open space NCC | 88.5 |
| TC18 | 0.03 | SOUTHWELL ROAD | Town Close | Informal amenity open space NCC | 64.2 |
| TC22 | 0.05 | TRAFALGAR STREET 1 | Town Close | Informal amenity open space NCC | 52.4 |
| TC23 | 0.03 | TRAFALGAR STREET 2 | Town Close | Informal amenity open space NCC | 66.6 |
| TC26 | 0.05 | VAUXHALL STREET | Town Close | Informal amenity open space NCC | 74.2 |
| | 10.94 | | | | 69.7 |
| E03 | 4.39 | BARTRAM MOWERS | Eaton | Informal amenity open space private | 73.3 |
| E09 | 4.26 | CIVIL SERVICE SPORTS GROUND | Eaton | Informal amenity open space private | 48.5 |
| E39 | 2.62 | IPSWICH ROAD ADULT LEARNING CENTRE | Eaton | Informal amenity open space private | 58.8 |
| E49 | 0.09 | THE CELLAR HOUSE PH (NEWMARKET ROAD) | Eaton | Informal amenity open space private | 83.7 |
| L06 | 8.15 | COUNTY HALL | Lakenham | Informal amenity open space private | 79.4 |
| L16 | 0.91 | HOLIDAY INN (IPSWICH ROAD) | Lakenham | Informal amenity open space private | 88.2 |
| L33 | 1.32 | LAKENHAM RESERVOIR (HALL ROAD) | Lakenham | Informal amenity open space private | 82.3 |
| L52 | 0.36 | TUCKSWOOD CENTRE | Lakenham | Informal amenity open space private | 62.8 |
| TC03 | 0.41 | BEECH DRIVE | Town Close | Informal amenity open space private | 54.8 |
| TC07 | 0.69 | FAIRFIELD ROAD | Town Close | Informal amenity open space private | 64.5 |
| TC19 | 0.23 | THE CRESCENT | Town Close | Informal amenity open space private | 78.1 |
| TC25 | 0.13 | UNTHANK ARMS PH | Town Close | Informal amenity open space private | 76.2 |
| TC27 | 0.07 | YORK STREET TAVERN PH | Town Close | Informal amenity open space private | 71.8 |
| | 23.63 | | | | 71.0 |
| E06 | 1.07 | BLUEBELL WOOD | Eaton | Natural and semi natural green space NCC | 61.5 |
| E14 | 1.27 | CRINGLEFORD BRIDGE PICNIC AREA | Eaton | Natural and semi natural green space NCC | 69.0 |

| | | | | | |
|------|-------|-------------------------------|------------|--|------|
| E17 | 4.58 | DANBY WOODS | Eaton | Natural and semi natural green space NCC | 61.1 |
| E18 | 0.25 | DONKEY LANE WOODS | Eaton | Natural and semi natural green space NCC | 58.8 |
| E19 | 6.00 | EATON COMMON | Eaton | Natural and semi natural green space NCC | 71.4 |
| E28 | 4.17 | EATON MARSHES | Eaton | Natural and semi natural green space NCC | 52.9 |
| E42 | 27.11 | MARSTON MARSH | Eaton | Natural and semi natural green space NCC | 75.6 |
| E44 | 0.68 | NEWMARKET ROAD SLIP ROAD | Eaton | Natural and semi natural green space NCC | 64.7 |
| E45 | 0.57 | OSBOURNE ROAD | Eaton | Natural and semi natural green space NCC | 55.0 |
| L04 | 0.77 | COOPER LANE | Lakenham | Natural and semi natural green space NCC | 66.7 |
| L05 | 1.12 | COOPER LANE 2 | Lakenham | Natural and semi natural green space NCC | 69.5 |
| L25 | 21.33 | LAKENHAM COMMON | Lakenham | Natural and semi natural green space NCC | 50.0 |
| L29 | 1.57 | LAKENHAM RAILWAY MARSH | Lakenham | Natural and semi natural green space NCC | NK |
| L30 | 0.80 | LAKENHAM RAILWAY WOOD | Lakenham | Natural and semi natural green space NCC | NK |
| L41 | 2.56 | NETHERWOOD GREEN | Lakenham | Natural and semi natural green space NCC | 55.0 |
| L43 | 1.25 | OLD LAKENHAM MEADOW | Lakenham | Natural and semi natural green space NCC | 52.2 |
| L44 | 0.87 | OLD LAKENHAM RIVER BANK | Lakenham | Natural and semi natural green space NCC | 62.8 |
| L45 | 0.38 | SANDY LANE WOODS | Lakenham | Natural and semi natural green space NCC | 41.2 |
| L51 | 0.41 | TROWSE BY PASS | Lakenham | Natural and semi natural green space NCC | 65.0 |
| | 76.76 | | | | 60.7 |
| E04 | 6.42 | BARTRAM MOWERS MARSH | Eaton | Natural and semi natural green space private | 82.6 |
| E05 | 18.86 | BLUEBELL ROAD MEADOW/MARSH | Eaton | Natural and semi natural green space private | 65.2 |
| E13 | 1.53 | CRINGLEFORD BRIDGE MARSH | Eaton | Natural and semi natural green space private | 80.0 |
| E27 | 4.14 | EATON LIME KILN (GREENWAYS) | Eaton | Natural and semi natural green space private | 82.6 |
| E35 | 4.81 | EATON VALE ACTIVITY CENTRE | Eaton | Natural and semi natural green space private | 50.0 |
| E40 | 1.21 | JUDGES DRIVE | Eaton | Natural and semi natural green space private | 65.0 |
| L01 | 1.22 | BRACONDALE GROVE (BRACONDALE) | Lakenham | Natural and semi natural green space private | 60.8 |
| L31 | 0.85 | LAKENHAM RAILWAY WOOD 2 | Lakenham | Natural and semi natural green space private | NK |
| TC01 | 0.29 | ALBERT TERRACE (NEWMARKET RD) | Town Close | Natural and semi natural green space private | 65.2 |
| | 39.34 | | | | 78.8 |
| E22 | 42.84 | EATON GOLF COURSE | Eaton | Outdoor Sport | 84.2 |
| E30 | 10.70 | EATON PARK | Eaton | Outdoor Sport | 68.1 |

| | | | | | |
|-------|-------|-----------------------------------|------------|-------------------|------|
| E30A | 2.24 | EATON PARK | Eaton | Outdoor Sport | 68.1 |
| E43 | 0.61 | N & N BOWLS CLUB | Eaton | Outdoor Sport | 83.7 |
| L10 | 0.85 | HARFORD PARK | Lakenham | Outdoor Sport | 69.6 |
| L26 | 2.37 | LAKENHAM CRICKET GROUND | Lakenham | Outdoor Sport | 52.9 |
| L26A | 0.38 | LAKENHAM SPORT AND LEISURE | Lakenham | Outdoor Sport | 52.9 |
| L32 | 0.72 | LAKENHAM REC | Lakenham | Outdoor Sport | 57.9 |
| TC20 | 0.90 | EAST ANGLIAN TENNIS & SQUASH CLUB | Town Close | Outdoor Sport | 85.7 |
| TC24 | 0.18 | TRAFFORD ROAD BOWLS GREEN | Town Close | Outdoor Sport | 87.7 |
| | 61.80 | | | | 71.8 |
| E29 | 2.32 | EATON PARK | Eaton | Parks and gardens | 72.5 |
| L09 | 1.36 | HARFORD PARK | Lakenham | Parks and gardens | 69.6 |
| L19 | 1.51 | JUBILEE PARK | Lakenham | Parks and gardens | 68.8 |
| L36 | 3.79 | LEA BRIDGES PARK | Lakenham | Parks and gardens | 68.8 |
| | 8.98 | | | | 69.9 |
| E10 | 8.86 | CNS HS | Eaton | School grounds | |
| E11 | 0.37 | COLMAN FS/IS | Eaton | School grounds | |
| E12 | 2.73 | COLMAN MS/JS | Eaton | School grounds | |
| E26 | 0.20 | EATON HALL SS | Eaton | School grounds | |
| E36 | 1.99 | FAIRWAY FS & MS/EATON PS | Eaton | School grounds | |
| E50 | | THE CLOSE SS | Eaton | School grounds | |
| E51 | 2.42 | TOWN CLOSE SCHOOL | Eaton | School grounds | |
| L02 | 1.90 | CAVELL FS/PS | Lakenham | School grounds | |
| L08 | 3.62 | HARFORD MS | Lakenham | School grounds | |
| L14 | 17.95 | HEWETT SCHOOL | Lakenham | School grounds | |
| L27 | 0.34 | LAKENHAM FS | Lakenham | School grounds | |
| L27A | 0.32 | LAKENHAM FS | Lakenham | School grounds | |
| L28 | 0.83 | LAKENHAM MS/PS | Lakenham | School grounds | |
| L53 | 0.46 | TUCKSWOOD PS | Lakenham | School grounds | |
| TC04 | 0.10 | Bignold Primary School | Town Close | School grounds | |
| TC04A | 0.28 | Bignold Primary School | Town Close | School grounds | |

| | | | | | |
|-------|-------|------------------------|------------|----------------|--|
| TC04B | 0.13 | Bignold Primary School | Town Close | School grounds | |
| TC08 | 0.33 | HARFORD MANOR SS | Town Close | School grounds | |
| TC15 | 2.35 | NORWICH HS FOR GIRLS | Town Close | School grounds | |
| TC21 | 3.42 | TOWN CLOSE SCHOOL | Town Close | School grounds | |
| | 48.60 | | | | |