

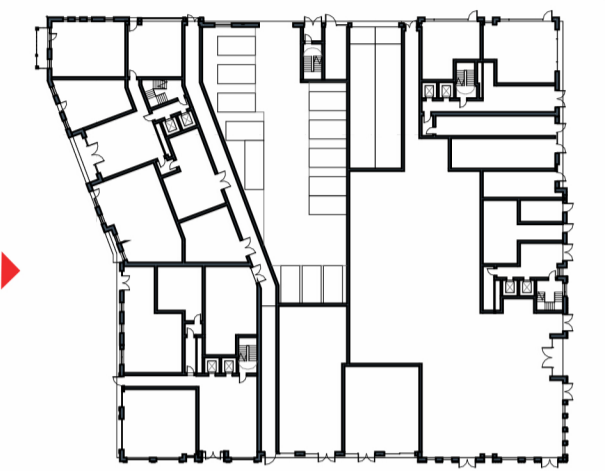
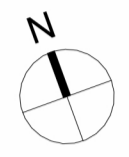
Contractors and consultants are not to scale dimensions from this drawing

Reproduced by permission of Ordnance Survey on behalf of HMSO © CROWN COPYRIGHT and database right 2008 All rights reserved Ordnance Survey Licence number AL 1000 22432 Broadway Malyan Limited

The survey information shown on this drawing is based on a topographical survey prepared by a third party and Broadway Malyan Limited accept no responsibility for the accuracy or completeness of the survey.

Drawings to be read in conjunction with the associated Design & Access Statement, associated consultant design team documents & reports and landscape information

Landscape shown is for illustrative purposes only. For detailed landscape information, please refer to the landscape information & documents.



**Materials Key**

| 1 Brickwork Finish                   |   |
|--------------------------------------|---|
| 1.1                                  | Red Brick                                       |
| 1.2                                  | Red Brick Soldier Course                        |
| 1.3                                  | Dark Red Brick                                  |
| 1.4                                  | Dark Red Brick Soldier Course                   |
| 1.5                                  | White Brick - Light Mortar                      |
| 1.6                                  | White Brick Soldier Course - Light Mortar       |
| 1.7                                  | Grey Brick - Dark Mortar                        |
| 1.8                                  | Light Grey Brick                                |
| 1.9                                  | Light Grey Brick Soldier Course                 |
| 1.10                                 | Black Brick - Matching Mortar                   |
| 1.11                                 | Dark Grey Brick - Light Mortar                  |
| 1.12                                 | Dark Grey Brick Soldier Course - Light Mortar   |
| 1.13                                 | Dark Grey Brick - Dark Mortar                   |
| 1.14                                 | Dark Grey Brick Soldier Course - Dark Mortar    |
| 1.15                                 | Medium Grey Brick - Light Mortar                |
| 1.16                                 | Medium Grey Brick Soldier Course - Light Mortar |
| 1.20                                 | Textured Brickwork                              |
| 1.21                                 | Inset Brickwork                                 |
| 2 Metal Work / Window Framing Finish |   |
| 2.1                                  | Black   |
| 2.2                                  | Brown   |
| 2.3                                  | Grey  |
| 2.4                                  | Dark Grey                                       |
| 2.5                                  | Dark Brown                                      |
| 2.6                                  | Salmon  |
| 2.7                                  | Yellow  |
| 2.8                                  | Green   |
| 2.9                                  | Blue  |
| 2.20                                 | Perforated Metal                                |
| 2.21                                 | Louvre  |
| 3 Roof Finish                        |   |
| 3.1                                  | Brown Roof Tile                                 |
| 3.2                                  | Grey Roof Tile                                  |
| 3.3                                  | Dark Grey Roof Tile                             |

| Revision | Date     | Drawn By | Description         |
|----------|----------|----------|---------------------|
| D0-1     | 31.03.22 |          | Issued For Planning |

**BroadwayMalyan<sup>BM</sup>**

4 Pear Place  
London  
SE1 8BT

T: +44 (0)20 7261 4200  
F: +44 (0)20 7261 4300  
E: Lon@BroadwayMalyan.com

www.BroadwayMalyan.com

Client  
**Weston Homes**

Project  
**Anglia Square  
Norwich**

Description  
**Elevations  
Block A  
West**

Status  
**For Planning**

| Scale      | Drawn By           | Date     |
|------------|--------------------|----------|
| 1:100@A1   | OR                 | 31.03.22 |
| Job Number | Drawing Number     | Revision |
| 35301      | ZA-XX-DR-A-05-0303 | D0-1     |

Original size 100mm @ A1 Copyright Broadway Malyan Limited

**1 A - 05 - West Elevation**  
Scale 1 : 100