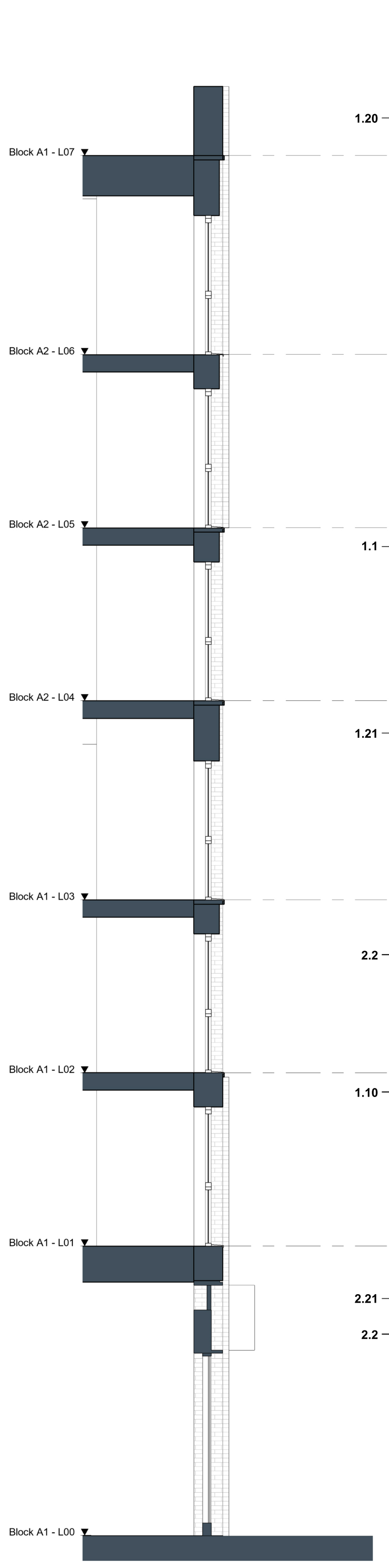


1 Ground Floor Plan  
Scale 1 : 50

2 Typical Floor Plan  
Scale 1 : 50

3 Typical Floor Plan  
Scale 1 : 50

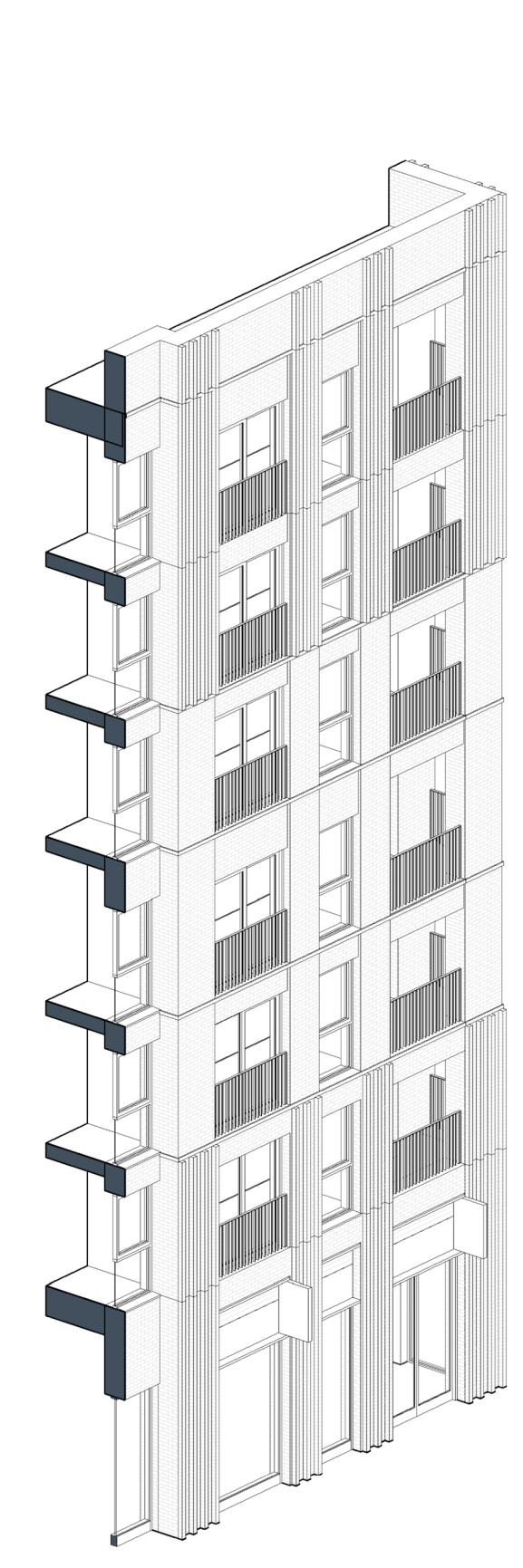
4 Upper Floor Plan  
Scale 1 : 50



5 Typical Section  
Scale 1 : 50



6 Typical Elevation  
Scale 1 : 50



7 3D Axonometric  
Scale

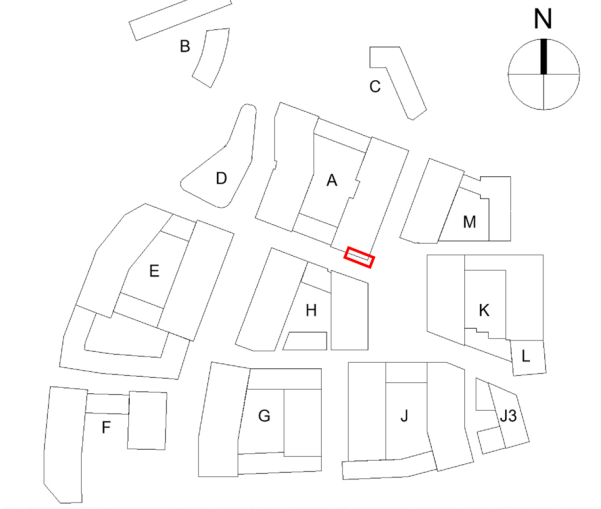
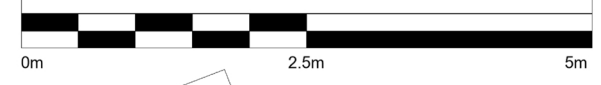
Contractors and consultants are not to scale dimensions from this drawing

Reproduced by permission of Ordnance Survey on behalf of HMSO © CROWN COPYRIGHT and database right 2008. All rights reserved. Ordnance Survey Licence number AL 1000 22432 Broadway Malyan Limited.

The survey information shown on this drawing is based on a topographical survey prepared by a third party and Broadway Malyan Limited accept no responsibility for the accuracy or completeness of the survey.

Drawings to be read in conjunction with the associated Design & Access Statement, associated consultant design team documents & reports and landscape information.

Landscape shown is for illustrative purposes only. For detailed landscape information, please refer to the landscape information & documents.



| Materials Key |   |
|---------------|---|
| <b>1</b>      | <b>Brickwork Finish</b>                       |
| 1.1           | Red Brick                                     |
| 1.2           | Red Brick Soldier Course                      |
| 1.3           | Dark Red Brick                                |
| 1.4           | Dark Red Brick Soldier Course                 |
| 1.5           | White Brick - Light Mortar                    |
| 1.6           | White Brick Soldier Course - Light Mortar     |
| 1.7           | Grey Brick - Dark Mortar                      |
| 1.8           | Light Grey Brick                              |
| 1.9           | Light Grey Brick Soldier Course               |
| 1.10          | Black Brick - Matching Mortar                 |
| 1.11          | Dark Grey Brick - Light Mortar                |
| 1.12          | Dark Grey Brick Soldier Course - Light Mortar |
| 1.13          | Dark Grey Brick - Dark Mortar                 |
| 1.14          | Dark Grey Brick Soldier Course - Dark Mortar  |
| 1.20          | Textured Brickwork                            |
| 1.21          | Inset Brickwork                               |
| <b>2</b>      | <b>Metal Work / Window Framing Finish</b>     |
| 2.1           | Black   |
| 2.2           | Brown   |
| 2.3           | White   |
| 2.4           | Dark Grey                                     |
| 2.5           | Dark Brown                                    |
| 2.6           | Salmon  |
| 2.7           | Yellow  |
| 2.8           | Green   |
| 2.9           | Blue  |
| 2.20          | Perforated Metal                              |
| 2.21          | Louvre  |
| <b>3</b>      | <b>Roof Finish</b>                            |
| 3.1           | Brown Roof Tile                               |
| 3.2           | Grey Roof Tile                                |
| 3.3           | Dark Grey Roof Tile                           |

| Revision | Date     | Drawn By | Issued For Planning |
|----------|----------|----------|---------------------|
| DO-1     | 31.03.22 |          | Issued For Planning |

## BroadwayMalyan<sup>BM</sup>

4 Pear Place  
London  
SE1 8BT  
  
T: +44 (0)20 7261 4200  
F: +44 (0)20 7261 4300  
E: Lon@BroadwayMalyan.com  
  
www.BroadwayMalyan.com

Client  
**Weston Homes**

Project  
**Anglia Square  
Norwich**

Description  
**Bay Study  
Block A2  
South Corner**

Status  
**For Planning**

| Scale      | Drawn By           | Date     |
|------------|--------------------|----------|
| 1:50@A1    | AB                 | 31.03.22 |
| Job Number | Drawing Number     | Revision |
| 35301      | ZA-XX-DR-A-21-0020 | D0-1     |