

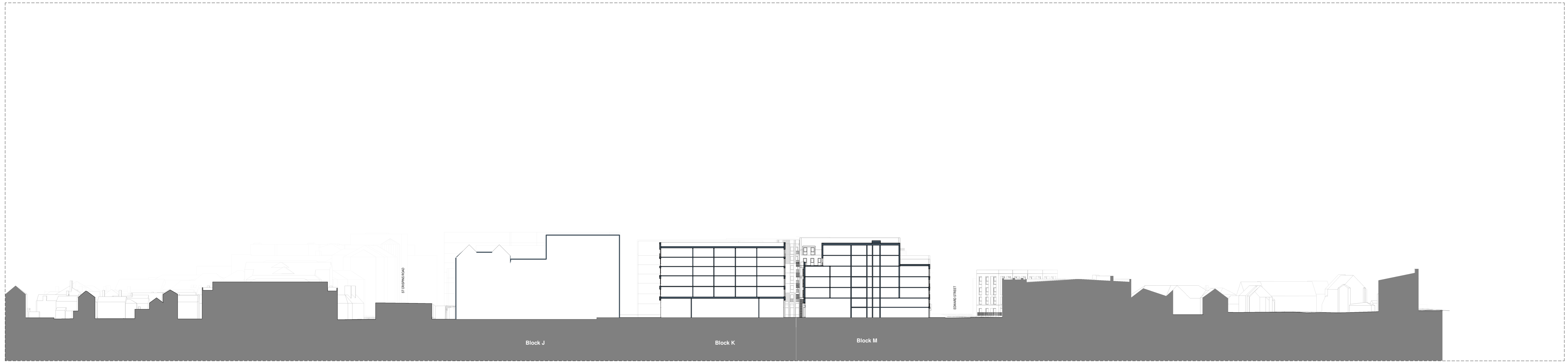
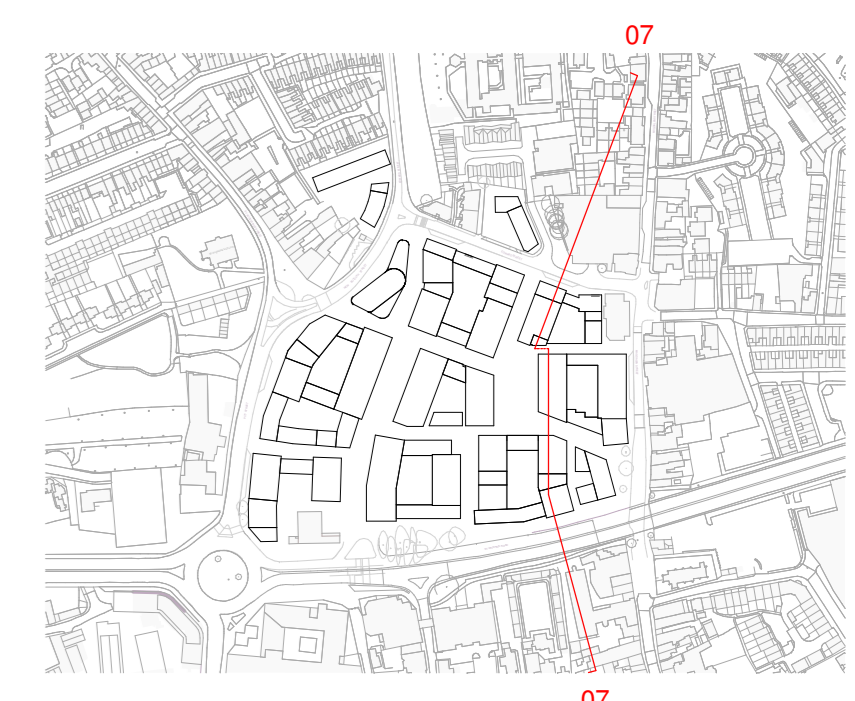
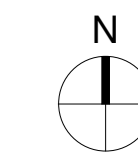
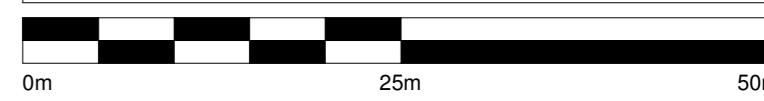
Contractors and consultants are not to scale dimensions from this drawing

Reproduced by permission of Ordnance Survey on behalf of HMGO © CROWN COPYRIGHT and database right 2008 All rights reserved Ordnance Survey Licence number: AL 1000 22432 Broadway Malyan Limited

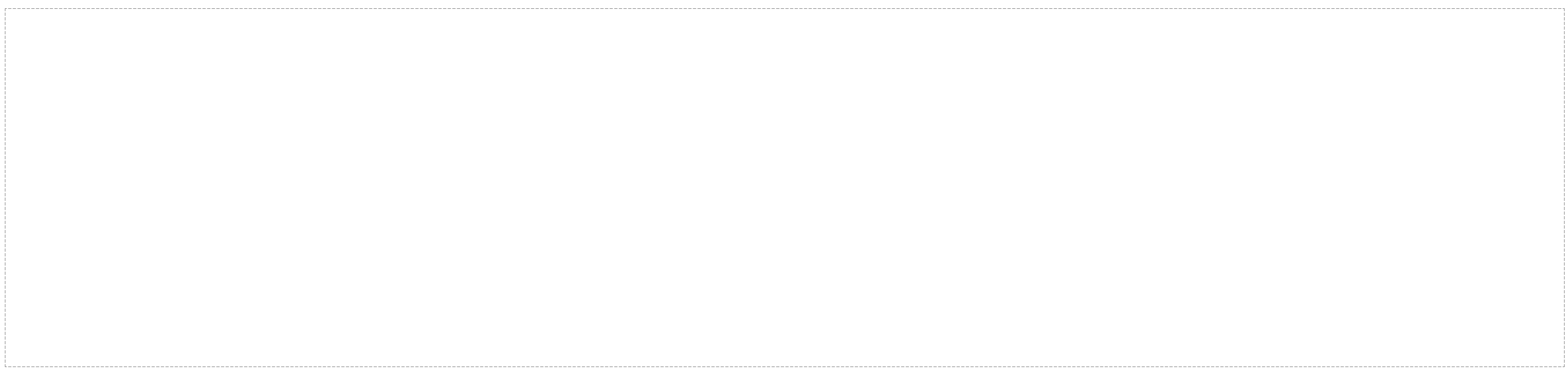
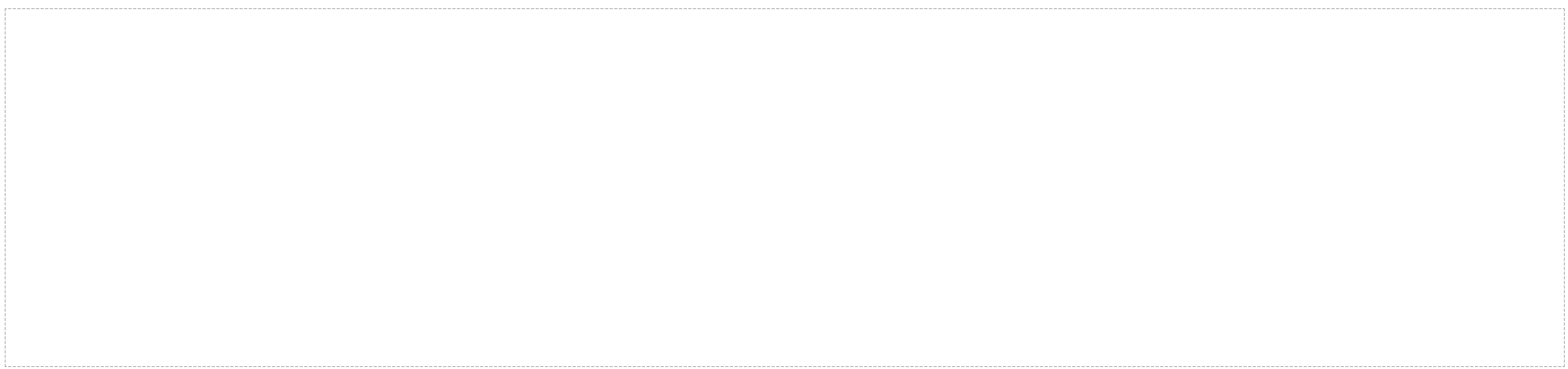
The survey information shown on this drawing is based on a topographical survey prepared by a third party and Broadway Malyan Limited accept no responsibility for the accuracy or completeness of the survey.

Drawings to be read in conjunction with the associated Design & Access Statement, associated consultant design team documents & reports and landscape information

Landscape shown is for illustrative purposes only. For detailed landscape information, please refer to the landscape information & documents.



1 Site Section 07
Scale 1:500



Revised	Date	Drawn By	Description
00-2	15.07.22		Issued For Planning
00-1	23.04.22		Issued For Planning

BroadwayMalyan^{BM}

4 Pear Place
London
SE1 8BT
T: +44 (0)20 7261 4200
F: +44 (0)20 7261 4200
E: Lon@BroadwayMalyan.com
www.BroadwayMalyan.com

Client
Weston Homes
Project
**Anglia Square
Norwich**
Description
**Site Sections
Section 07**

Status
For Planning
Scale 1:500@A0
Drawn By JP
Date 28.04.22
Job Number 35301
Drawing Number ZZ-XX-DR-A-04-0003
Revision D0-2