



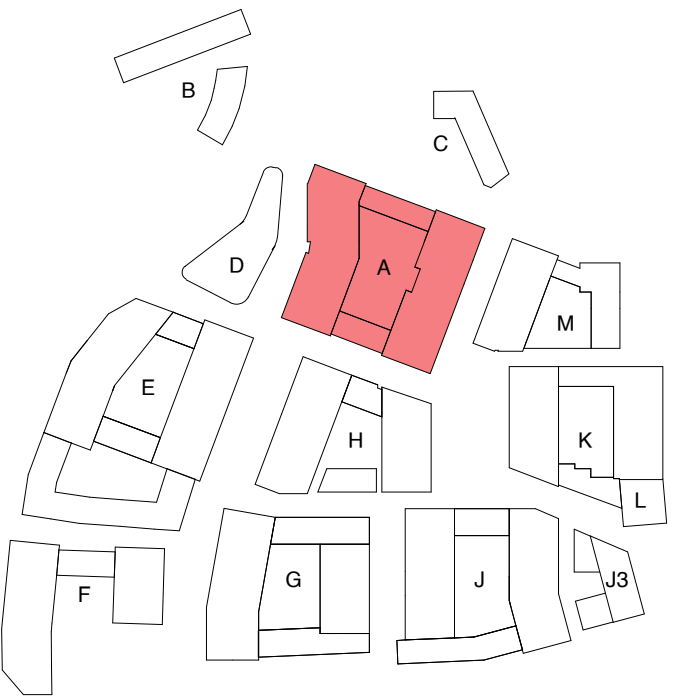
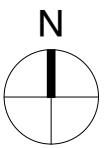
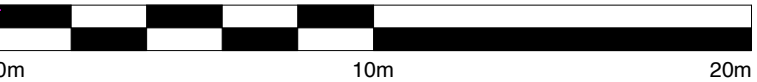
Contractors and consultants are not to scale dimensions from this drawing

Reproduced by permission of Ordnance Survey on behalf of HMSO  
© CROWN COPYRIGHT and database right 2008 All rights reserved  
Ordnance Survey Licence number AL 1000 22432 Broadway Malyan Limited

The survey information shown on this drawing is based on a topographical survey prepared by a third party and Broadway Malyan Limited accept no responsibility for the accuracy or completeness of the survey.

Drawings to be read in conjunction with the associated Design & Access Statement, associated consultant desin team documents & reports and landscape information

Landscape shown is for illustrative purposes only. For detailed landscape information, please refer to the landscape information & documents.



D0-4	20.01.23	Issued For Planning
D0-3	15.09.22	Issued For Planning
D0-2	15.07.22	Issued For Planning
D0-1	31.03.22	Issued For Planning
Revision	Date	Drawn By / Description

**Weston Homes**



**BroadwayMalyan<sup>BM</sup>**

4 Pear Place  
London  
SE1 8BT

T: +44 (0)20 7261 4200  
F: +44 (0)20 7261 4300  
E: Lon@BroadwayMalyan.com

[www.BroadwayMalyan.com](http://www.BroadwayMalyan.com)

Client  
**Weston Homes**

Project  
**Anglia Square  
Norwich**

Description  
**GA Plan  
Block A  
Level 02**

Status <b>For Planning</b>		
Scale <b>1:200@A1</b>	Drawn By <b>BM</b>	Date <b>20.01.23</b>
Job Number <b>35301</b>	Drawing Number <b>ZA-02-DR-A-03-0102</b>	Revision <b>D0-4</b>