

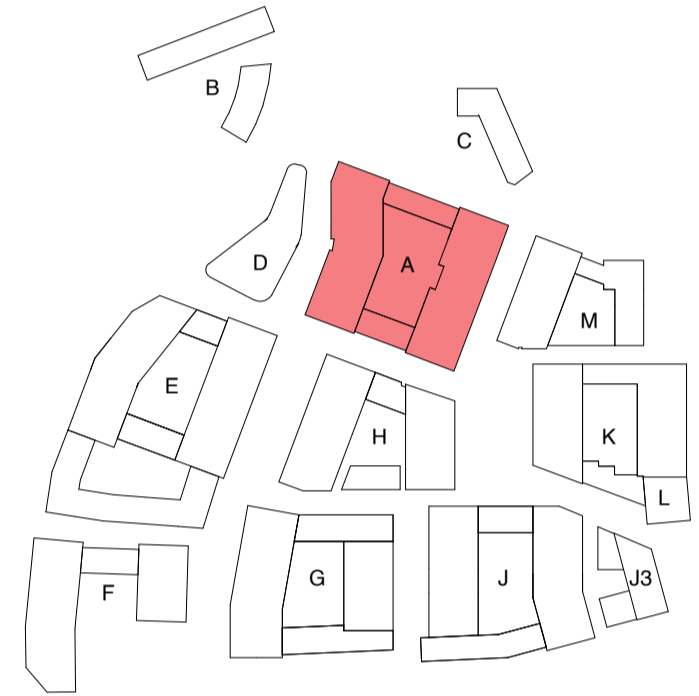
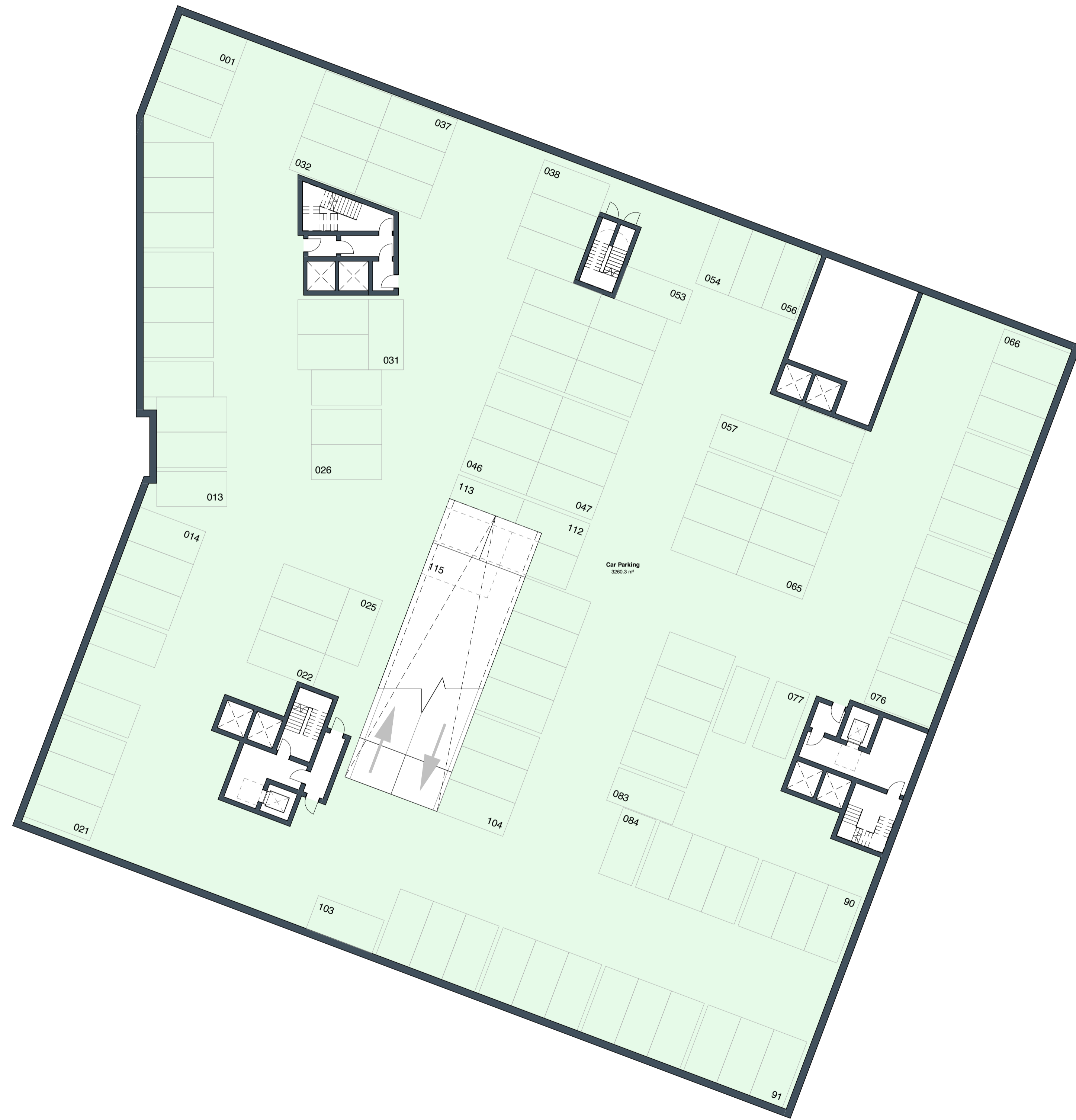
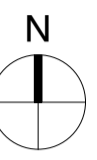
Contractors and consultants are not to scale dimensions from this drawing

Reproduced by permission of Ordnance Survey on behalf of HMSO © CROWN COPYRIGHT and database right 2008 All rights reserved Ordnance Survey Licence number AL 1000 22432 Broadway Malyan Limited

The survey information shown on this drawing is based on a topographical survey prepared by a third party and Broadway Malyan Limited accept no responsibility for the accuracy or completeness of the survey.

Drawings to be read in conjunction with the associated Design & Access Statement, associated consultant design team documents & reports and landscape information

Landscape shown is for illustrative purposes only. For detailed landscape information, please refer to the landscape information & documents.



Revision	Date	Drawn By	Description
DD-4	20.01.23		Issued For Planning
DD-3	15.09.22		Issued For Planning
DD-2	15.07.22		Issued For Planning
DD-1	31.03.22		Issued For Planning

Weston Homes 

BroadwayMalyan^{BM}

4 Pear Place
London
SE1 8BT

T: +44 (0)20 7261 4200
F: +44 (0)20 7261 4300
E: Lon@BroadwayMalyan.com

www.BroadwayMalyan.com

Client
Weston Homes

Project
**Anglia Square
Norwich**

Description
**GA Plan
Block A
Level B01**

Status
For Planning

Scale 1:200@A1 Drawn By BM Date 20.01.23

Job Number 35301 Drawing Number ZA-99-DR-A-03-0099 Revision D0-4