

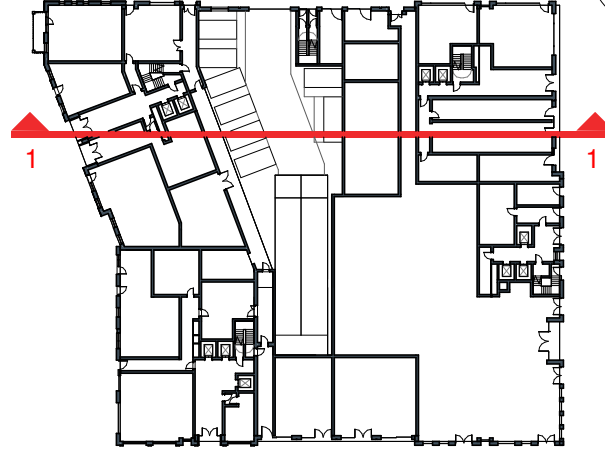
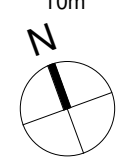
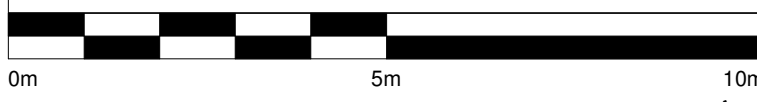
Contractors and consultants are not to scale dimensions from this drawing

Reproduced by permission of Ordnance Survey on behalf of HMSO © CROWN COPYRIGHT and database right 2008 All rights reserved Ordnance Survey Licence number AL 1000 22432 Broadway Malyan Limited

The survey information shown on this drawing is based on a topographical survey prepared by a third party and Broadway Malyan Limited accept no responsibility for the accuracy or completeness of the survey.

Drawings to be read in conjunction with the associated Design & Access Statement, associated consultant design team documents & reports and landscape information

Landscape shown is for illustrative purposes only. For detailed landscape information, please refer to the landscape information & documents.



**Materials Key**

- 1 Brickwork Finish**
  - 1.1 Red Brick
  - 1.2 Red Brick Soldier Course
  - 1.3 Dark Red Brick
  - 1.4 Dark Red Brick Soldier Course
  - 1.5 White Brick - Light Mortar
  - 1.6 White Brick Soldier Course - Light Mortar
  - 1.7 Grey Brick - Dark Mortar
  - 1.8 Light Grey Brick
  - 1.9 Light Grey Brick Soldier Course
  - 1.10 Black Brick - Matching Mortar
  - 1.11 Dark Grey Brick - Light Mortar
  - 1.12 Dark Grey Brick Soldier Course - Light Mortar
  - 1.13 Dark Grey Brick - Dark Mortar
  - 1.14 Dark Grey Brick Soldier Course - Dark Mortar
  - 1.15 Medium Grey Brick - Light Mortar
  - 1.16 Medium Grey Brick Soldier Course - Light Mortar
- 1.20 Textured Brickwork
- 1.21 Inset Brickwork
- 2 Metal Work / Window Framing Finish**
  - 2.1 Black
  - 2.2 Brown
  - 2.3 Grey
  - 2.4 Dark Grey
  - 2.5 Dark Brown
  - 2.6 Salmon
  - 2.7 Yellow
  - 2.8 Green
  - 2.9 Blue
- 2.20 Perforated Metal
- 2.21 Louvre
- 3 Roof Finish**
  - 3.1 Brown Roof Tile
  - 3.2 Grey Roof Tile
  - 3.3 Dark Grey Roof Tile
  - 3.4 Blue Pantile
  - 3.5 Dark Grey Pantile

D0-4	20.01.23	Issued For Planning
D0-3	15.09.22	Issued For Planning
D0-2	15.07.22	Issued For Planning
D0-1	31.03.22	Issued For Planning

Revision Date Drawn By Description

**Weston Homes**

**BroadwayMalyan<sup>BM</sup>**

4 Pear Place  
London  
SE1 8BT

T: +44 (0)20 7261 4200  
F: +44 (0)20 7261 4300  
E: Lon@BroadwayMalyan.com

www.BroadwayMalyan.com

Client  
**Weston Homes**

Project  
**Anglia Square  
Norwich**

Description  
**Elevations  
Block A**

Status  
**For Planning**

Scale 1:100@A1 Drawn By JP Date 20.01.23

Job Number 35301 Drawing Number ZA-XX-DR-A-05-0306 Revision D0-4



**1 A - 05 - South Elevation Internal**  
Scale 1 : 100