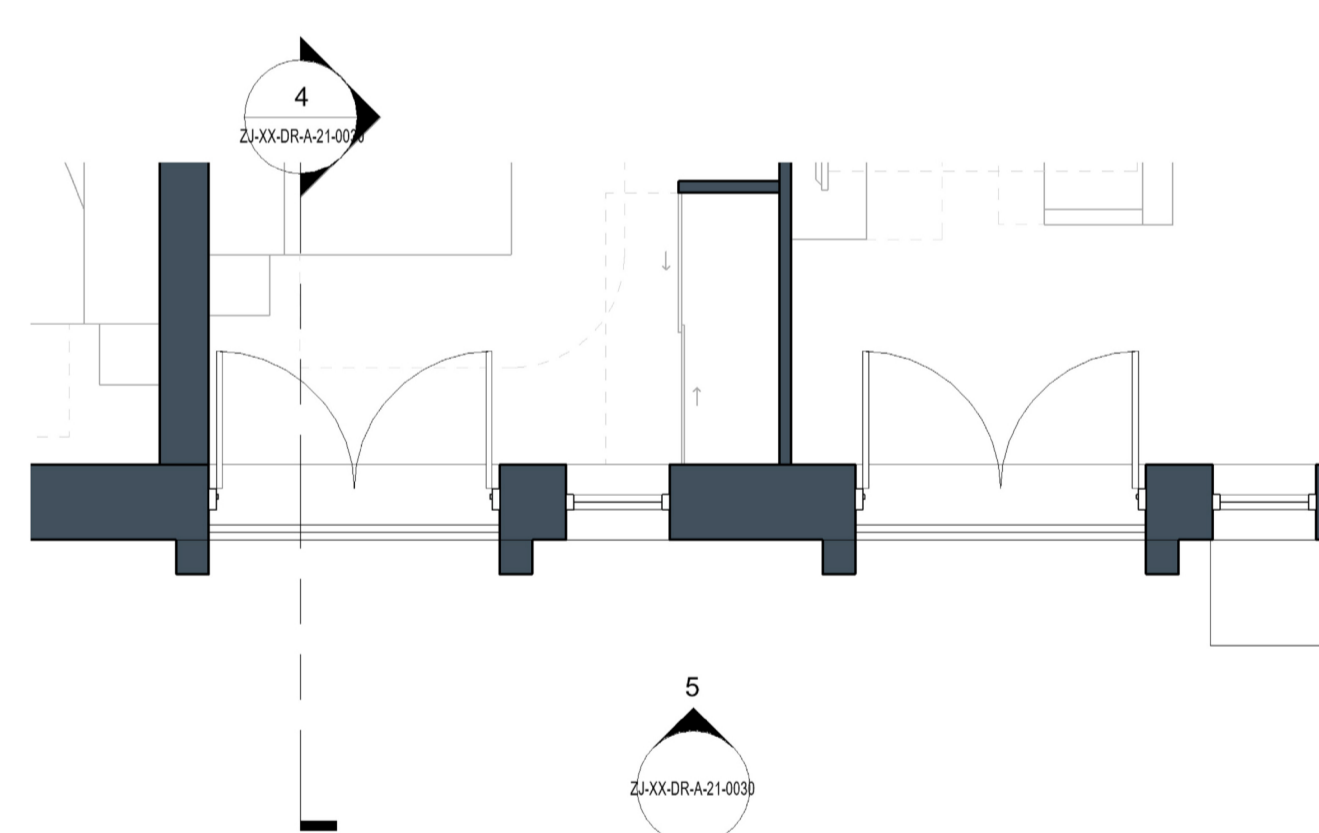
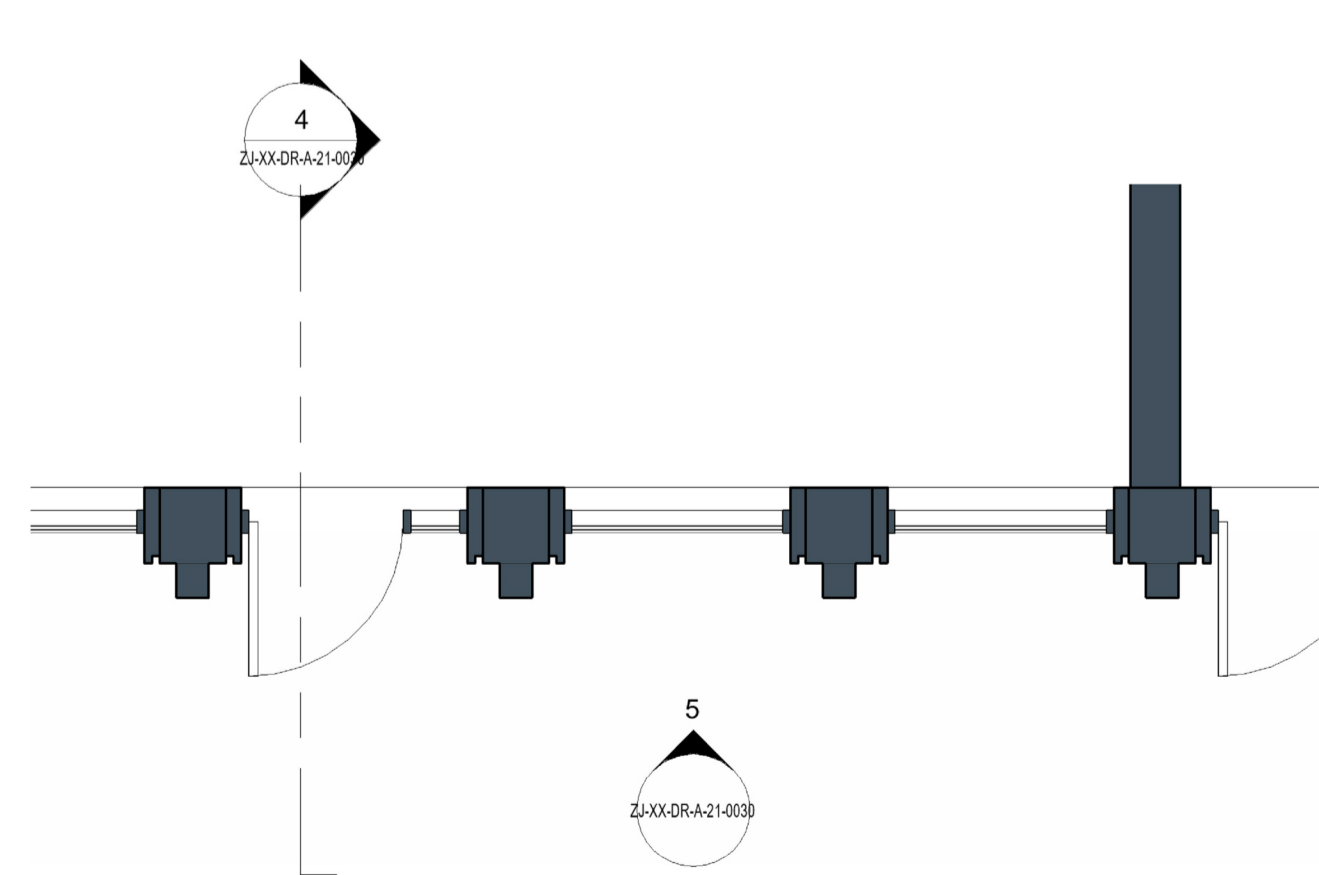


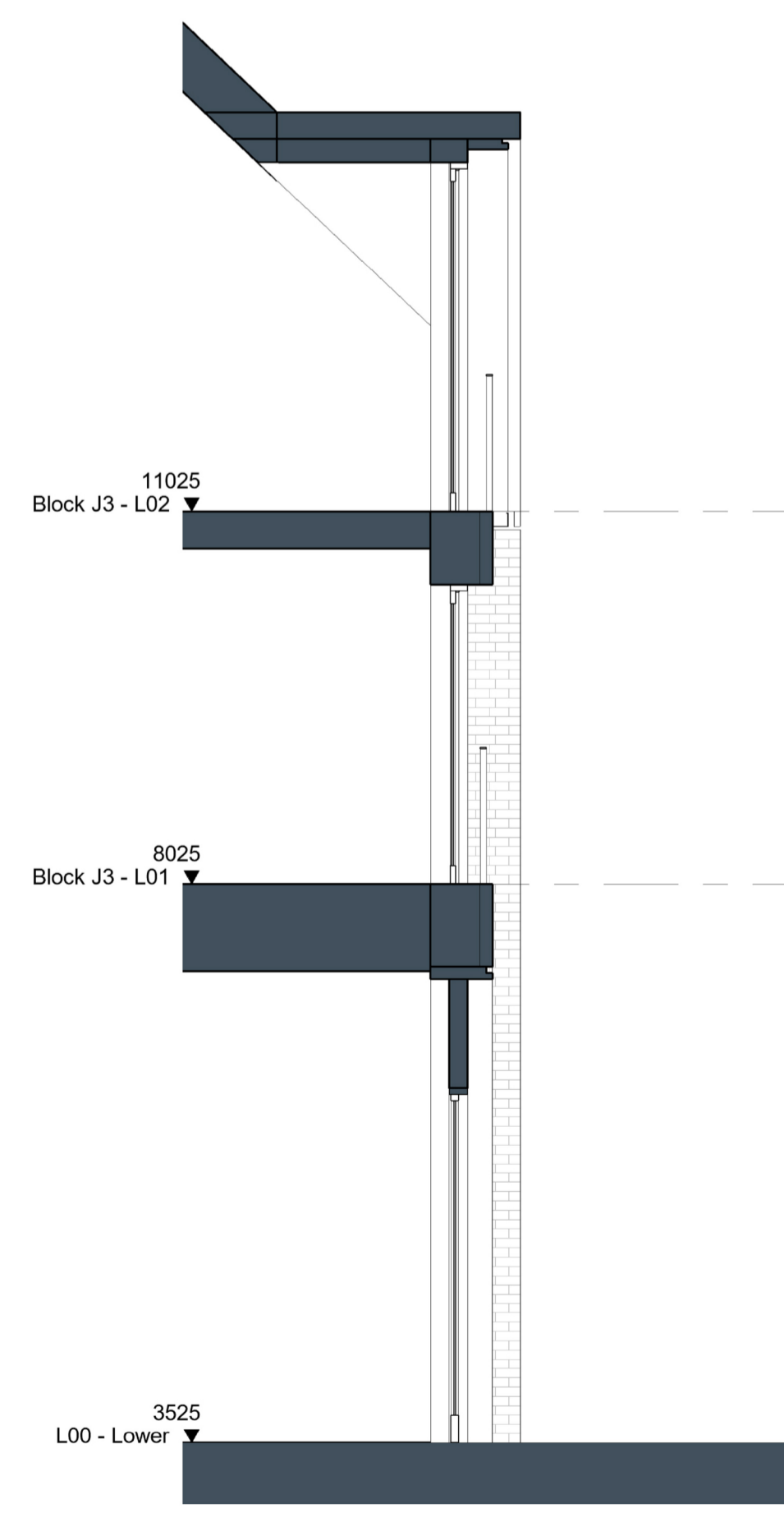
**3 Upper Floor Plan**  
Scale 1 : 50



**2 Typical Floor Plan**  
Scale 1 : 50



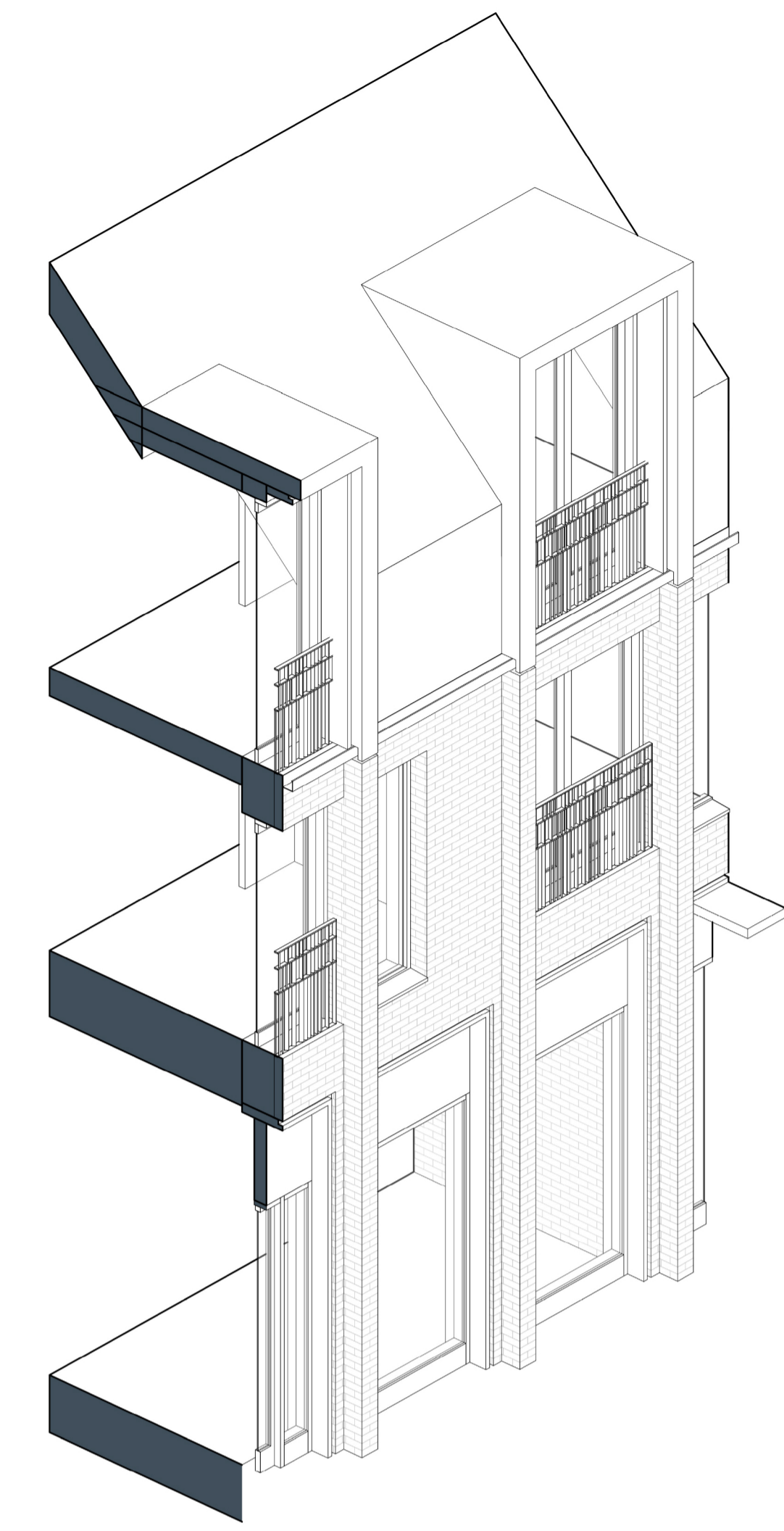
**1 Ground Floor Plan**  
Scale 1 : 50



**4 Typical Section**  
Scale 1 : 50



**5 Typical Elevation**  
Scale 1 : 50



**6 3D Axonometric**  
Scale

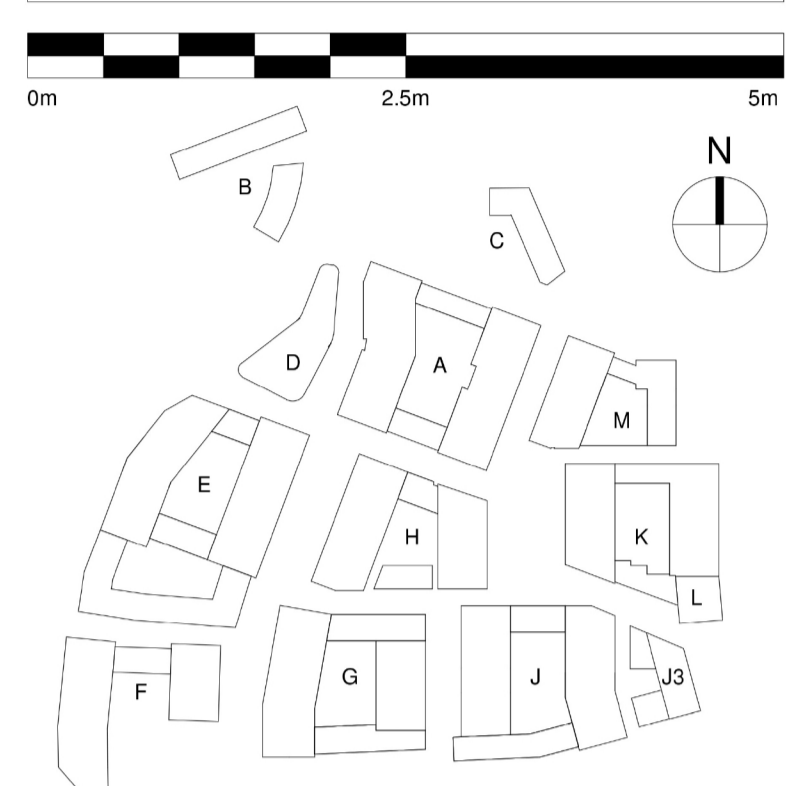
Contractors and consultants are not to scale dimensions from this drawing

Reproduced by permission of Ordnance Survey on behalf of HMSO © CROWN COPYRIGHT and database right 2008 All rights reserved Ordnance Survey Licence number AL 1000 22432 Broadway Malyan Limited

The survey information shown on this drawing is based on a topographical survey prepared by a third party and Broadway Malyan Limited accept no responsibility for the accuracy or completeness of the survey.

Drawings to be read in conjunction with the associated Design & Access Statement, associated consultant design team documents & reports and landscape information

Landscape shown is for illustrative purposes only. For detailed landscape information, please refer to the landscape information & documents.



**Materials Key**

<b>1 Brickwork Finish</b>
1.1 Red Brick
1.2 Red Brick Soldier Course
1.3 Dark Red Brick
1.4 Dark Red Brick Soldier Course
1.5 White Brick - Light Mortar
1.6 White Brick Soldier Course - Light Mortar
1.7 Grey Brick - Dark Mortar
1.8 Light Grey Brick
1.9 Light Grey Brick Soldier Course
1.10 Black Brick - Matching Mortar
1.11 Dark Grey Brick - Light Mortar
1.12 Dark Grey Brick Soldier Course - Light Mortar
1.13 Dark Grey Brick - Dark Mortar
1.14 Dark Grey Brick Soldier Course - Dark Mortar
1.20 Textured Brickwork
1.21 Inset Brickwork
<b>2 Metal Work / Window Framing Finish</b>
2.1 Black
2.2 Brown
2.3 White
2.4 Dark Grey
2.5 Dark Brown
2.6 Salmon
2.7 Yellow
2.8 Green
2.9 Blue
2.20 Perforated Metal Louvre
2.21
<b>3 Roof Finish</b>
3.1 Brown Roof Tile
3.2 Grey Roof Tile
3.3 Dark Grey Roof Tile
3.4 Blue Pantile
3.5 Dark Grey Pantile

DO-3	20.01.23	Issued For Planning
DO-2	15.07.22	Issued For Planning
DO-1	31.03.22	Issued for Planning
Revision	Date	Drawn By / Description

**Weston Homes**

**BroadwayMalyan<sup>BM</sup>**

4 Pear Place  
London  
SE1 8BT

T: +44 (0)20 7261 4200  
F: +44 (0)20 7261 4300  
E: Lon@BroadwayMalyan.com

www.BroadwayMalyan.com

Client  
**Weston Homes**

Project  
**Anglia Square  
Norwich**

Description  
**Bay Study  
Block J3 - East  
Magdalen Street**

Status  
**For Planning**

Scale	Drawn By	Date
1:50@A1	AB	31.03.22
Job Number	Drawing Number	Revision
35301	ZJ-XX-DR-A-21-0010	D0-3