

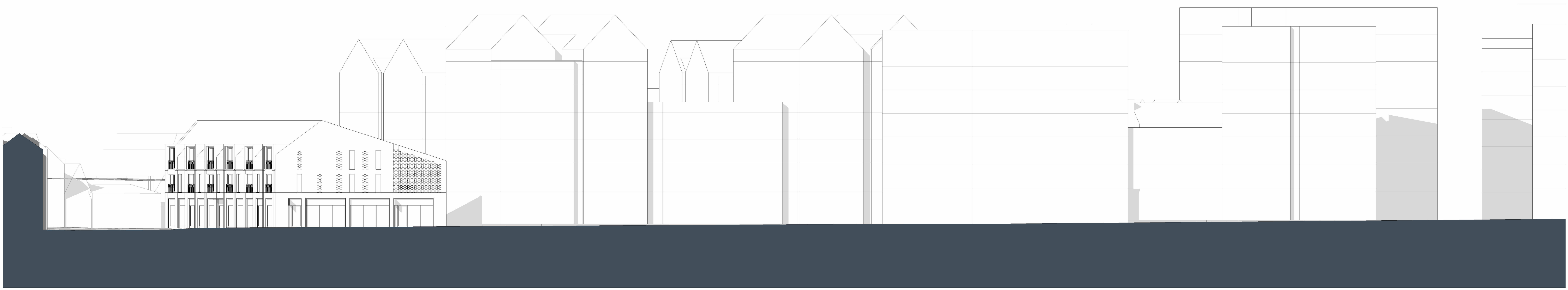
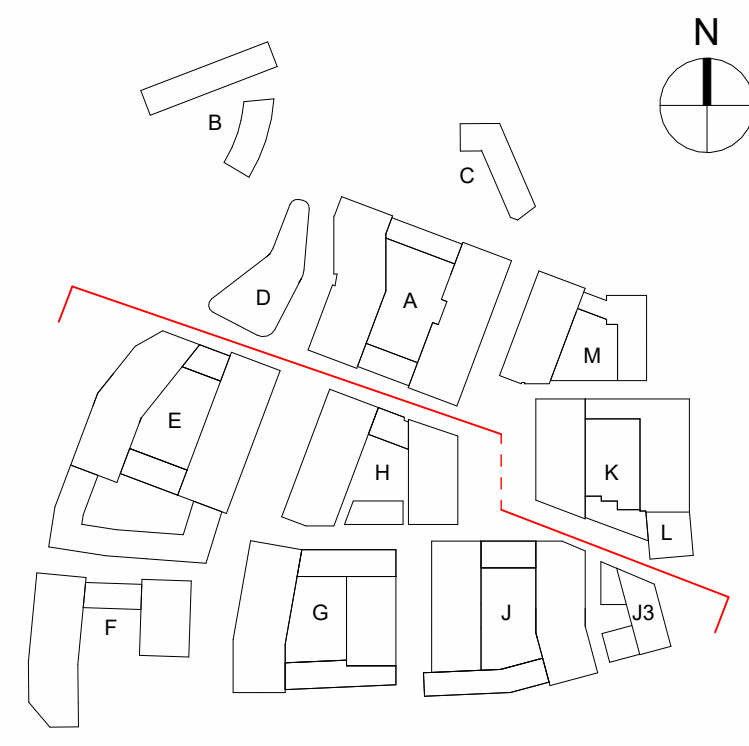
Contractors and consultants are not to scale dimensions from this drawing

Reproduced by permission of Ordnance Survey on behalf of HMGO  
© CROWN COPYRIGHT and database right 2008 All rights reserved  
Ordnance Survey Licence number AL 1000 2243Z Broadway Malyan Limited

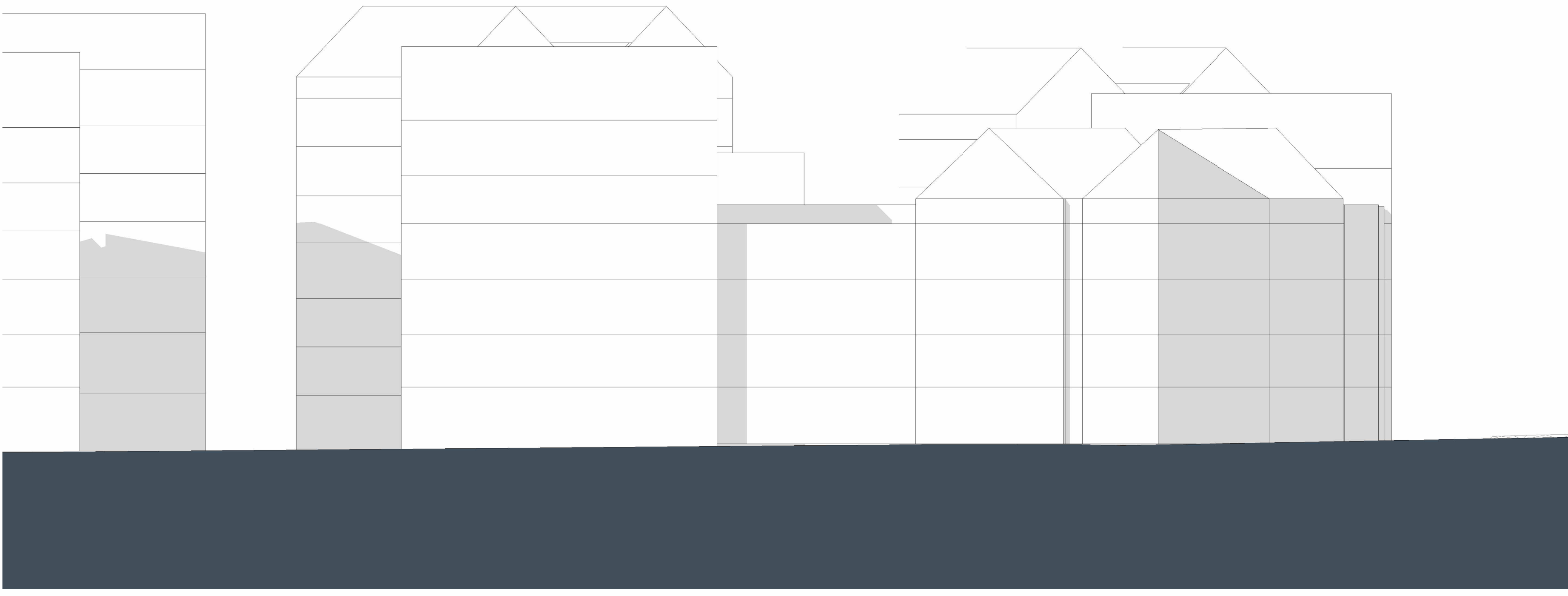
The survey information shown on this drawing is based on a topographical survey prepared by a third party and Broadway Malyan Limited accept no responsibility for the accuracy or completeness of the survey.

Drawings to be read in conjunction with the associated Design & Access Statement, associated consultant design team documents & reports and landscape information.

Landscape shown is for illustrative purposes only. For detailed landscape information, please refer to the landscape information & documents.



1 Botolph North - Part 1  
Scale 1 : 200



2 Botolph North - Part 2  
Scale 1 : 200

| Rev | Date     | Drawn By            | Description |
|-----|----------|---------------------|-------------|
| 004 | 15.01.23 | Weston For Planning |             |
| 003 | 15.01.23 | Weston For Planning |             |
| 002 | 15.01.23 | Weston For Planning |             |
| 001 | 15.01.23 | Weston For Planning |             |

**Weston Homes** 

**BroadwayMalyan<sup>BM</sup>**

4 Pear Place  
London  
SE1 8BT

T: +44 (0)20 7261 4200  
F: +44 (0)20 7261 4200  
E: Lon@BroadwayMalyan.com

www.BroadwayMalyan.com

---

Client  
**Weston Homes**

Project  
**Anglia Square  
Norwich**

Description  
**Street Elevations  
Botolph Street**

---

Status

| Scale    | Drawn By | Date     |
|----------|----------|----------|
| 1:200@A0 | BM       | 20.01.23 |

| Job Number | Drawing Number     | Revision |
|------------|--------------------|----------|
| 35301      | ZZ-XX-DR-A-05-0006 | D0-4     |

Original size 100mm @ A0 Copyright Broadway Malyan Limited