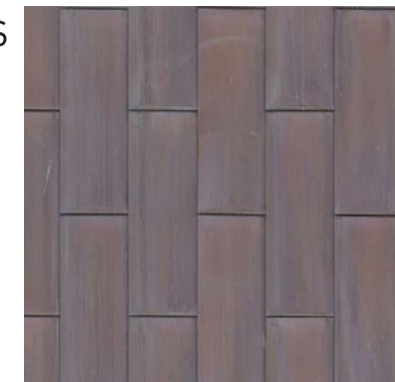
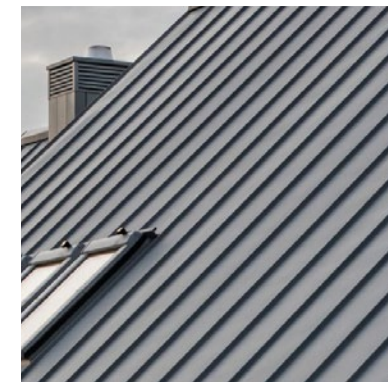


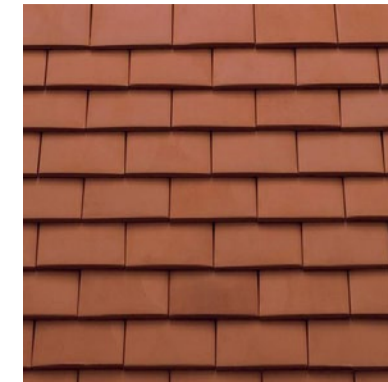
Roof Finishes



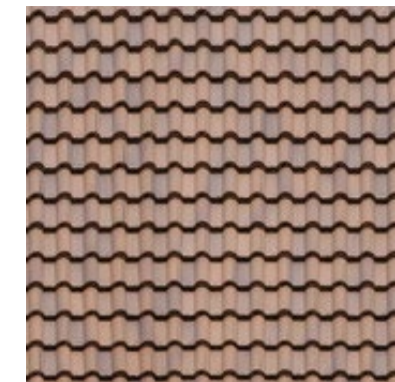
Roof Finish 01
Pigmented zinc



Roof Finish 02
Natural zinc



Roof Finish 03
Roof tiles, red



Roof Finish 04
Pan tiles



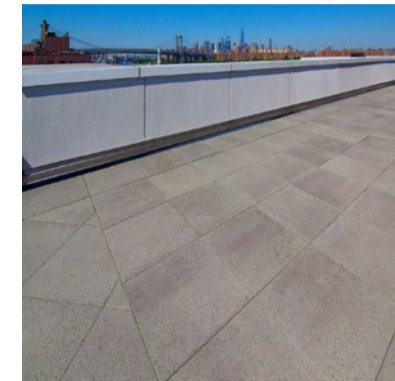
Roof Finish 05
Natural Slates



Roof Finish 06
Living Roof



Roof Finish 07
Single Ply Membrane

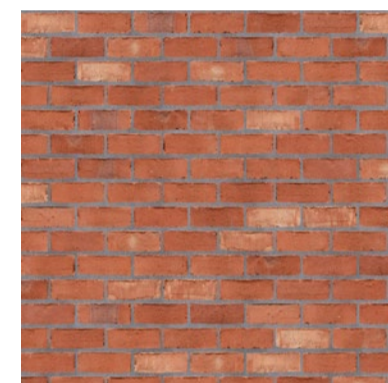


Roof Finish 08
Concrete pavers

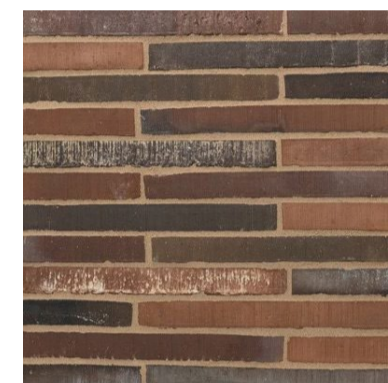
Wall Finishes



Wall Finish 01
Lighter brick



Wall Finish 02
Red brick



Wall Finish 03
Mid brick



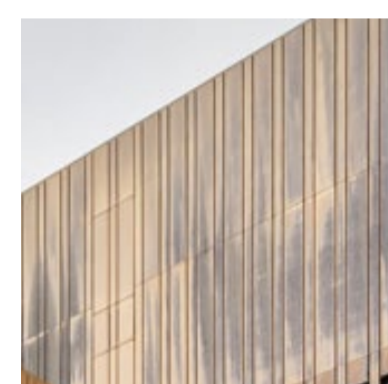
Wall Finish 04
Dark brick



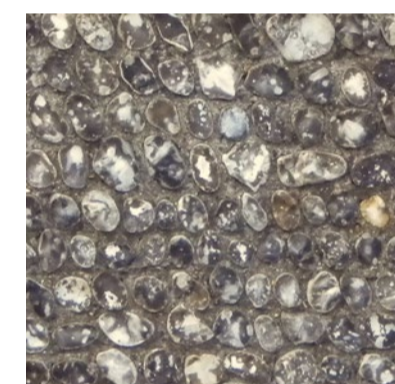
Wall Finish 05
Weatherboard,
Horizontal



Wall Finish 06
Weatherboard,
Vertical

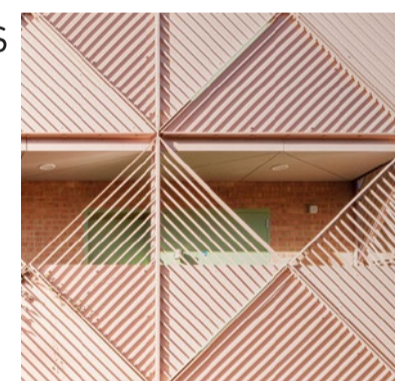


Wall Finish 07
Metal cladding

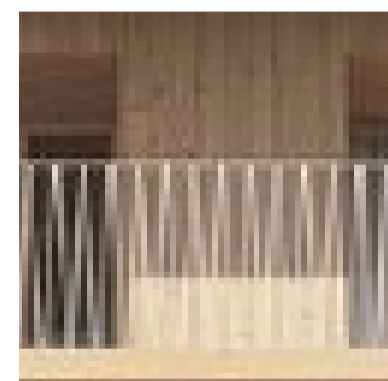


Wall Finish 08
Flint

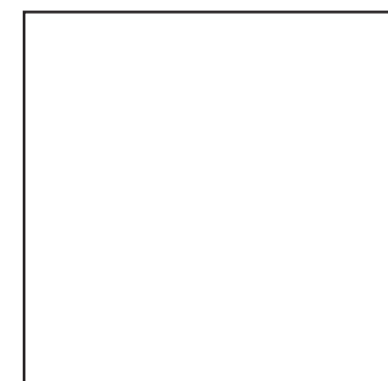
Other Finishes



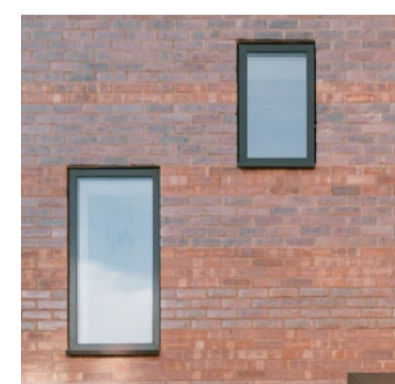
Misc. Finish 01
Painted metal



Misc. Finish 01
Painted metal



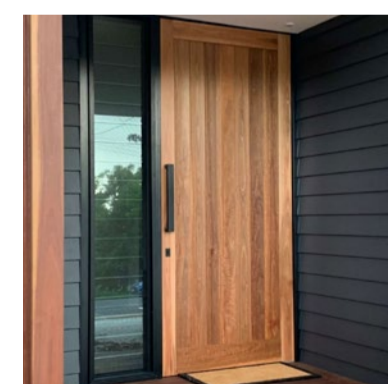
Misc. Finish 02
Galvanised metal



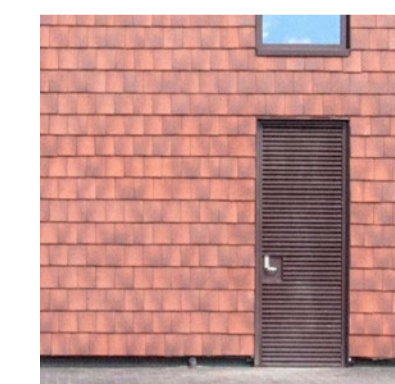
Misc. Finish 03
Double Glazed
Timber/Al windows



Misc. Finish 04
Curtain Walling / shop
front

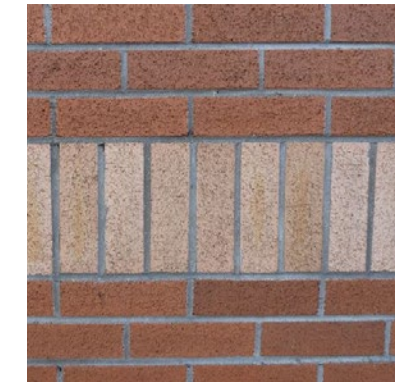


Misc. Finish 05
Stained Timber
Entrance Door



Misc. Finish 06
PPC Steel louvred
door

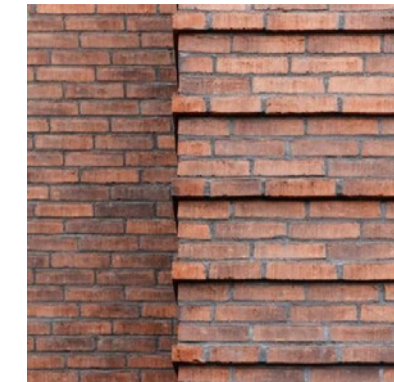
Wall Detail



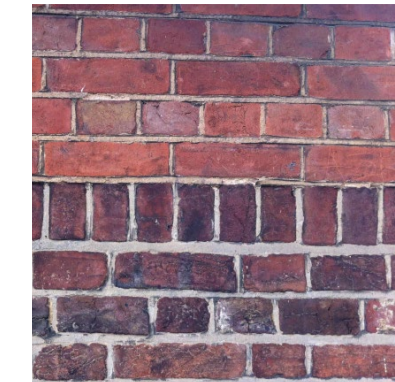
Detail 01a
Linear band: Soldier
course



Detail 01b
Linear band: Double
soldier course



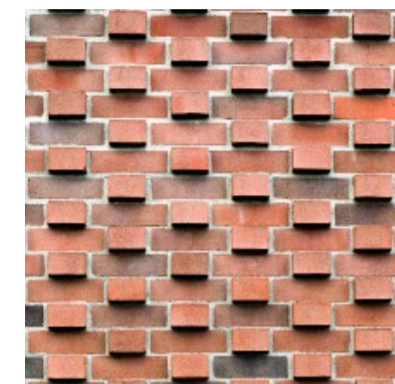
Detail 01c
Linear band:
projecting course



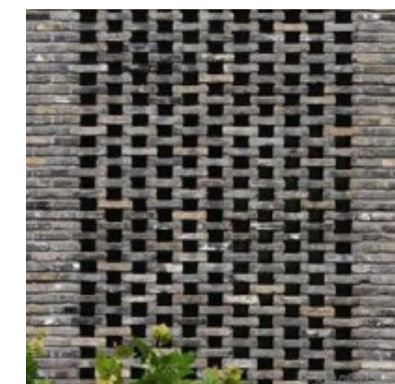
Detail 01d
Linear band: Rowlock
course



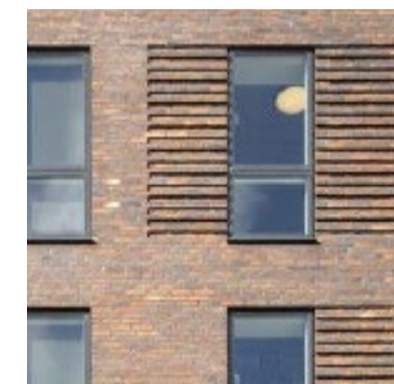
Detail 01e
Linear band: Angled/
squint course



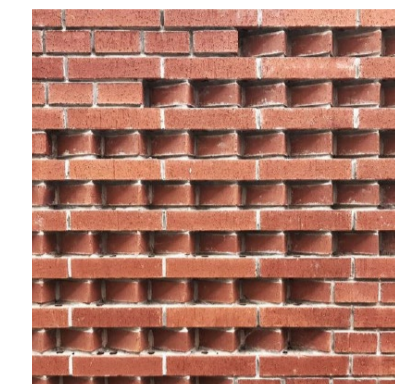
Detail 02a
Brick panel:
Projecting intermit-
tent bricks



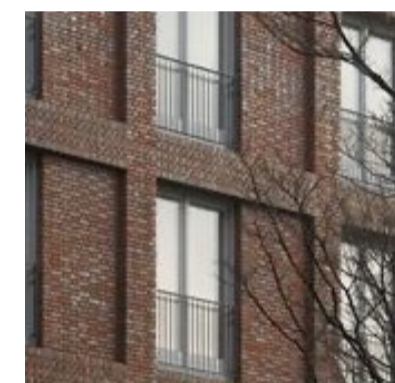
Detail 02b
Brick panel: Hit and
miss open brick
courses



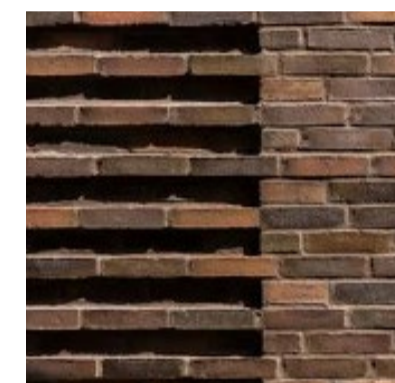
Detail 02c
Brick panel: Project-
ing linear courses



Detail 02d
Brick panel: Angled/
squint courses



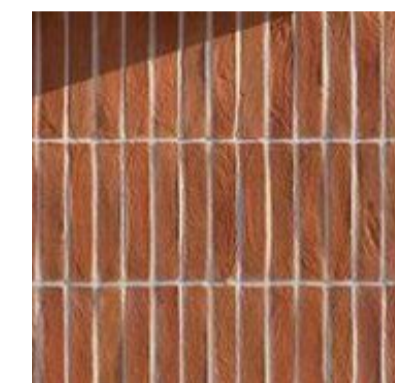
Detail 03a
Recessed brick panel:
Stretcher bond



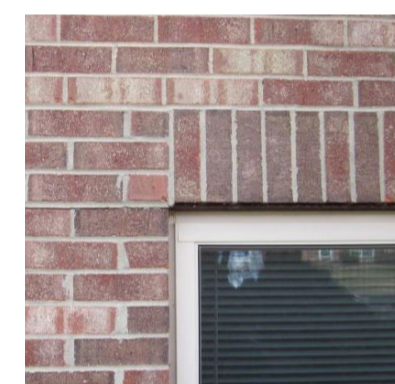
Detail 03b
Recessed brick panel:
Rebated brick courses



Detail 03c
Recessed brick panel:
Header courses



Detail 03d
Recessed brick panel:
Solider courses



Detail 04a
Header course:
Soldier brick



Detail 04b
Header course:
Recessed solider
brick



Detail 05a
Verge Detail
Soldier course



Detail 05b
Verge Detail
Mortar fillet



Detail 05c
Verge Detail
Toothed brickwork

1. All Dimensions in mm unless stated otherwise.
2. Do not scale this drawing. All dimensions to be verified by the contractor before work is commenced.
3. Architect to be notified immediately if any discrepancies are found.
4. All shop drawings to be approved by Architect before work commences.
5. All details to be in accordance with relevant British Standards and manufacturers recommendations and specification.
6. This drawing is the property of Stolton Studio Ltd, copyright reserved. This drawing is not to be copied, reproduced, retained or disclosed to any unauthorised person either wholly or in part without the specific consent in writing of Stolton Studio.
7. All work to be carried out by a competent contractor working, where appropriate, to an agreed method statement.
8. Please note that all details shown on GAs are generated automatically by the computer software, and are not to be used for reference or construction. For all interface details, please refer to 1:5 drawings.
9. This drawing is produced based on Survey information by others and Stolton Studio Ltd take no responsibility for the accuracy of this information.

Notes
Please note that all details shown on GAs are generated automatically by the computer software, and are not to be used for reference or construction. For all interface details, please refer to 1:5 drawings.

Rev	Date	Description
A	19/06/2023	Reserved Matters Issue

Drawing Title:	Facade_Materials & Finishes	Scale:	NTS
Project No.:	055	First Issue:	19/06/23
Project Name:	Deal Ground and May Gurney Site	Status:	S3-Reserved Matters
Project Address:	Bracondale, Norwich	Drawing No.:	055-S3-ZZ-A400
		Rev.:	A

The Studios, Unit A, Willow House,
Dragonfly Place, London SE4 2PJ
020 3355 9533
mail@stolton.co.uk