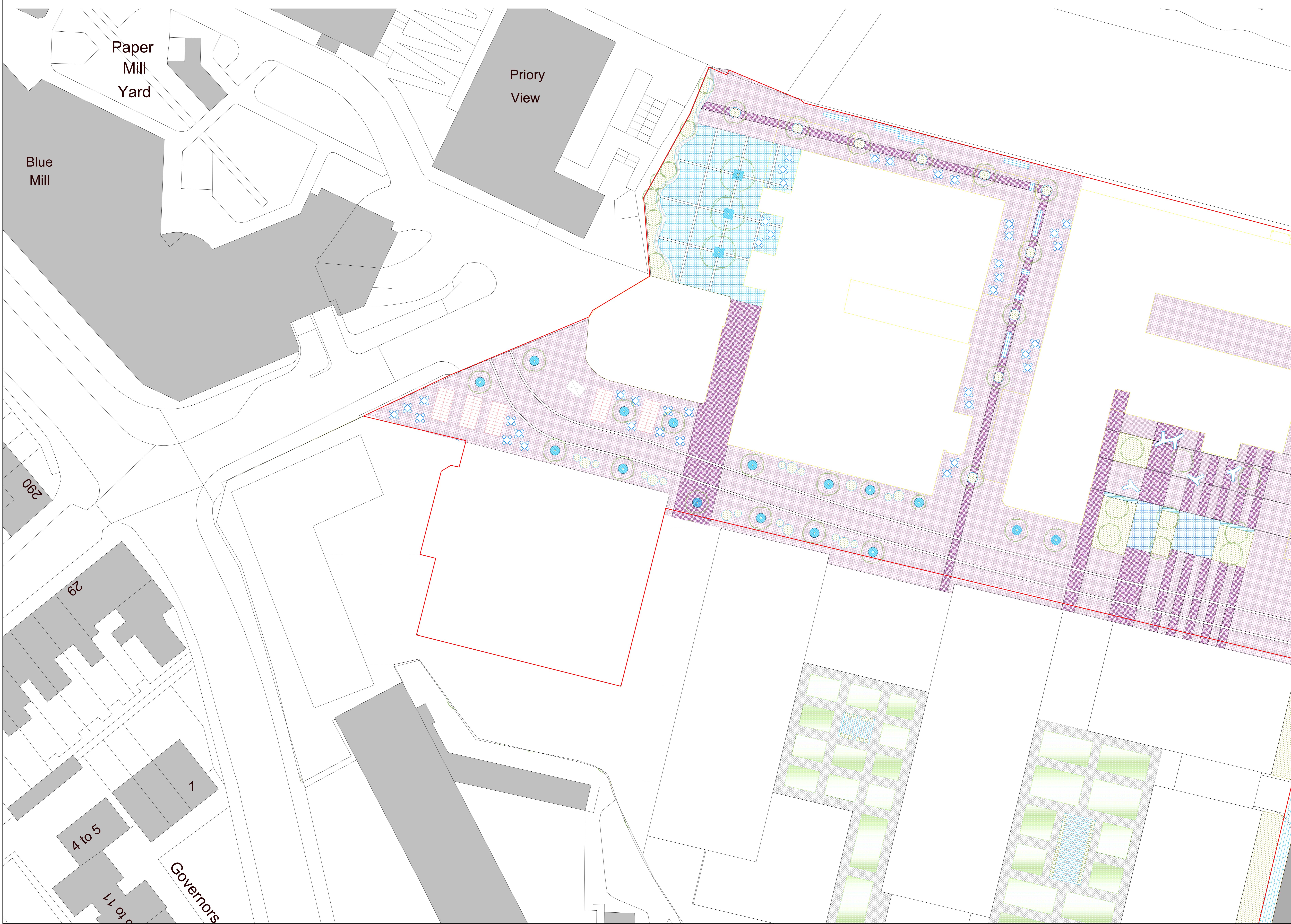


Tree Constraints Plan showing proposed layout against BS5837:2012 tree categories & Root Protection Areas



BS5837 Categories
Canopy and stem colour denotes BS5837 category. Pink denotes Root Protection Area.

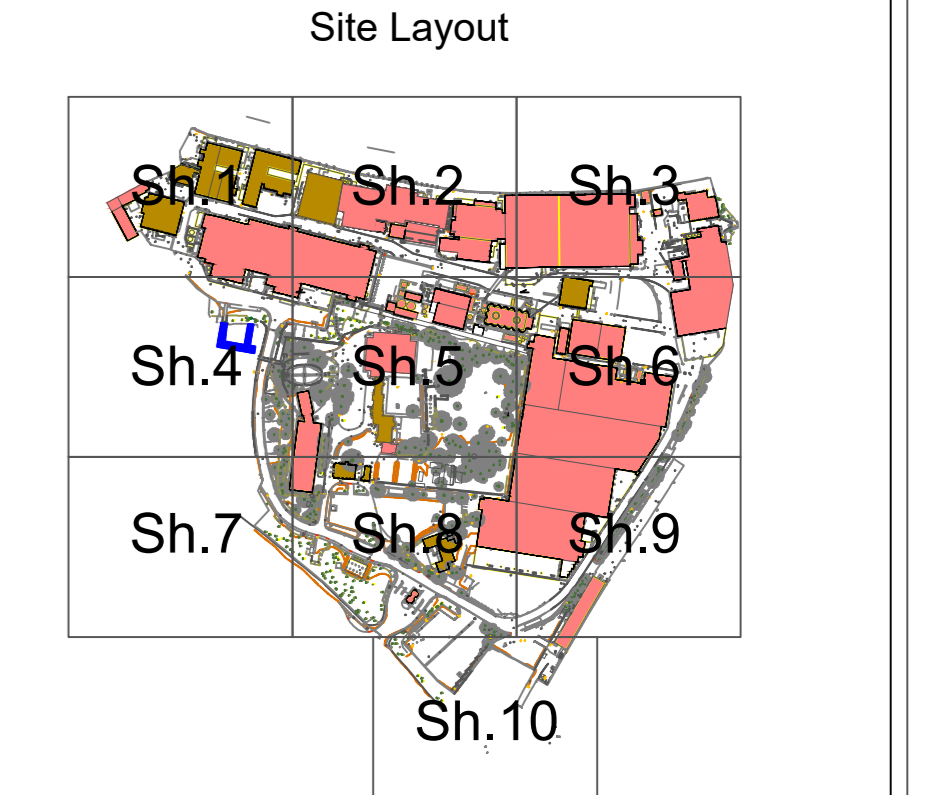
- Category A (Green)
- Category B (Blue)
- Category C (Grey)
- Category U (Dark Red)

- Category A**
Trees of high quality with an estimated remaining life expectancy of at least 40 years.
- Category B**
Trees of moderate quality with an estimated remaining expectancy of at least 20 years.
- Category C**
Trees of low quality with an estimated remaining life expectancy of at least 10 years, or a stem diameter below 150mm.
- Category U**
Trees in such a condition that they cannot realistically be retained as living trees in the context of the current land use for longer than 10 years.

Tree Groups
BS5837 Category denoted by hatch colour. Red outline shows removal and yellow partial removal.

Proposed tree removals

Masterplan and Landscaping Plan
See the Site Development Masterplan and Landscape Plan within the Design and Access Statement and Landscaping Plan for details of all hatch colours not listed in this key.



1	552055jrJune22_TCPpr_FV2.dwg	21/06/22
No.	Revision/Issue	Date



9 Holyrood Street, SE1 2EL
Tel: 0203 544 4000

Project Name and Address
Carrow Works
Bracondale
Norwich
NR1 2DD

Project Carrow Works	Sheet Sheet 1
Date 21/05/2022	
Scale 1 to 200 at A0	

Tree Constraints Plan showing proposed layout against BS5837:2012 tree categories & Root Protection Areas



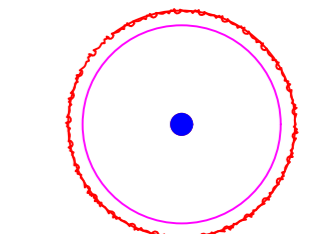
BS5837 Categories
Canopy and stem colour denotes BS5837 category. Pink denotes Root Protection Area.

- Category A (Green)
- Category B (Blue)
- Category C (Grey)
- Category U (Dark Red)

- Category A**
Trees of high quality with an estimated remaining life expectancy of at least 40 years.
- Category B**
Trees of moderate quality with an estimated remaining expectancy of at least 20 years.
- Category C**
Trees of low quality with an estimated remaining life expectancy of at least 10 years, or a stem diameter below 150mm.
- Category U**
Trees in such a condition that they cannot realistically be retained as living trees in the context of the current land use for longer than 10 years.

Tree Groups
BS5837 Category denoted by hatch colour. Red outline shows removal and yellow partial removal.

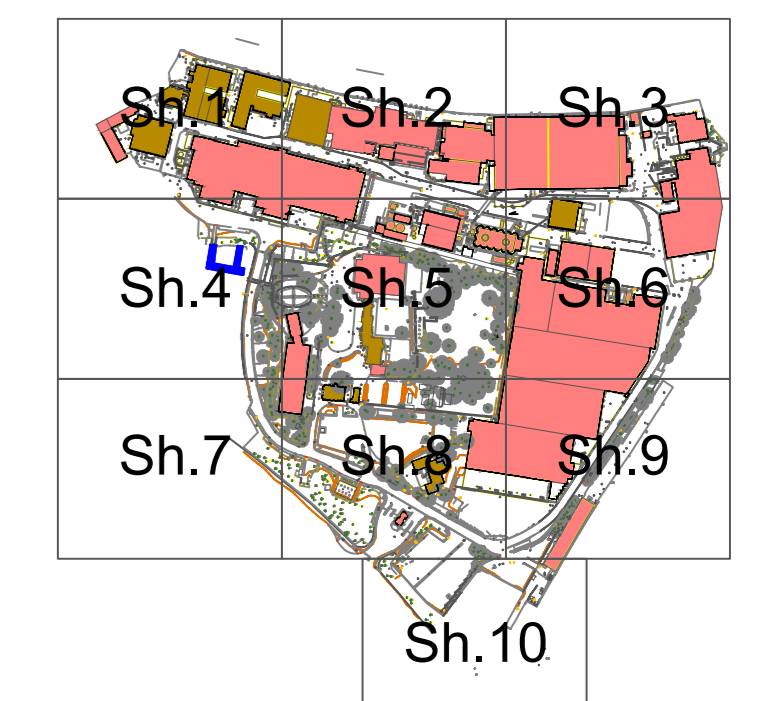
Proposed tree removals



Masterplan and Landscaping Plan

See the Site Development Masterplan and Landscape Plan within the Design and Access Statement and Landscaping Plan for details of all hatch colours not listed in this key.

Site Layout



1	552055jrJune22_TCPpr_FV2.dwg	21/06/22
No.	Revision/Issue	Date



9 Holyrood Street, SE1 2EL
Tel: 0203 544 4000

Project Name and Address
Carrow Works
Bracondale
Norwich
NR1 2DD

Project Carrow Works	Sheet Sheet 2
Date 21/05/2022	
Scale 1 to 200 at A0	

Tree Constraints Plan showing proposed layout against BS5837:2012 tree categories & Root Protection Areas



BS5837 Categories
Canopy and stem colour denotes BS5837 category. Pink denotes Root Protection Area.

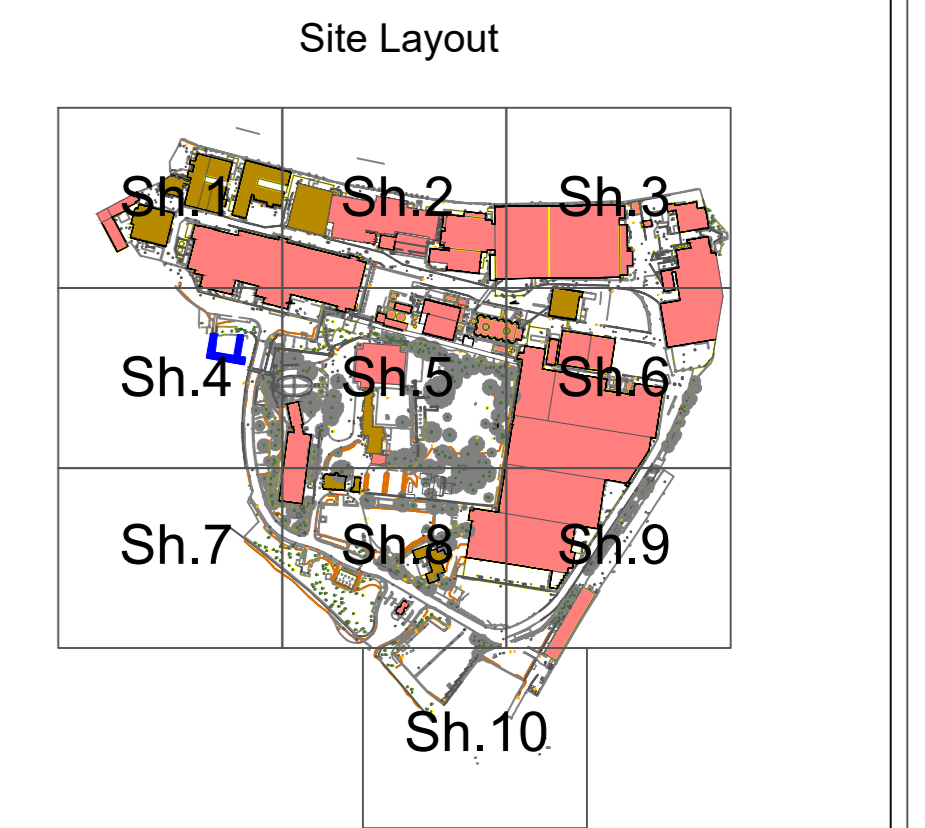
- Category A (Green)
- Category B (Blue)
- Category C (Grey)
- Category U (Dark Red)

- Category A**
Trees of high quality with an estimated remaining life expectancy of at least 40 years.
- Category B**
Trees of moderate quality with an estimated remaining expectancy of at least 20 years.
- Category C**
Trees of low quality with an estimated remaining life expectancy of at least 10 years, or a stem diameter below 150mm.
- Category U**
Trees in such a condition that they cannot realistically be retained as living trees in the context of the current land use for longer than 10 years.

Tree Groups
BS5837 Category denoted by hatch colour. Red outline shows removal and yellow partial removal.

Proposed tree removals

Masterplan and Landscaping Plan
See the Site Development Masterplan and Landscape Plan within the Design and Access Statement and Landscaping Plan for details of all hatch colours not listed in this key.



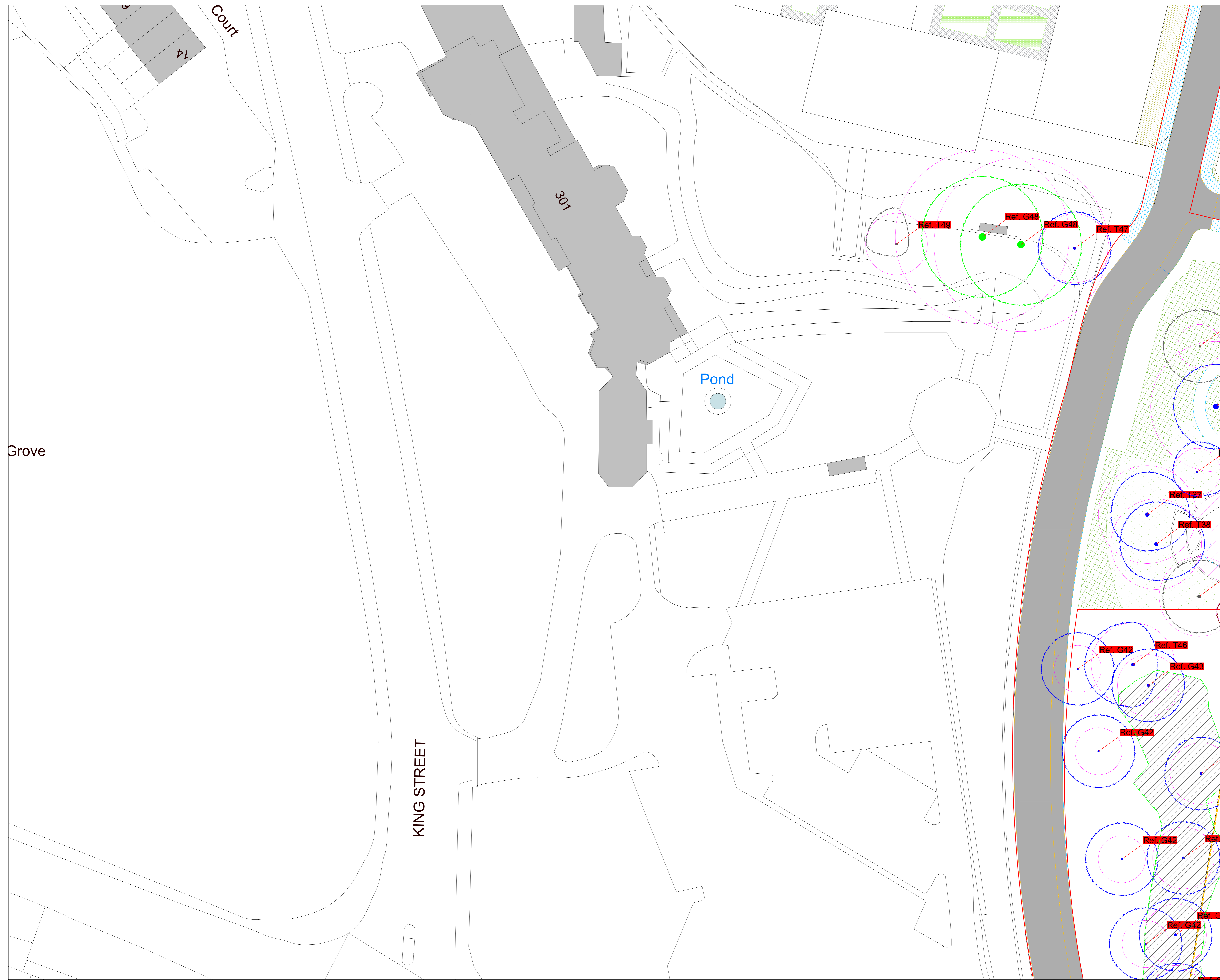
1	552055jrJune22_TCPpr_FV2.dwg	21/06/22
No.	Revision/Issue	Date



9 Holyrood Street, SE1 2EL
Tel: 0203 544 4000

Project Name and Address
Carrow Works
Bracondale
Norwich
NR1 2DD

Project Carrow Works	Sheet Sheet 3
Date 21/05/2022	
Scale 1 to 200 at A0	



Tree Constraints Plan showing proposed layout against BS5837:2012 tree categories & Root Protection Areas

BS5837 Categories
 Canopy and stem colour denotes BS5837 category. Pink denotes Root Protection Area.

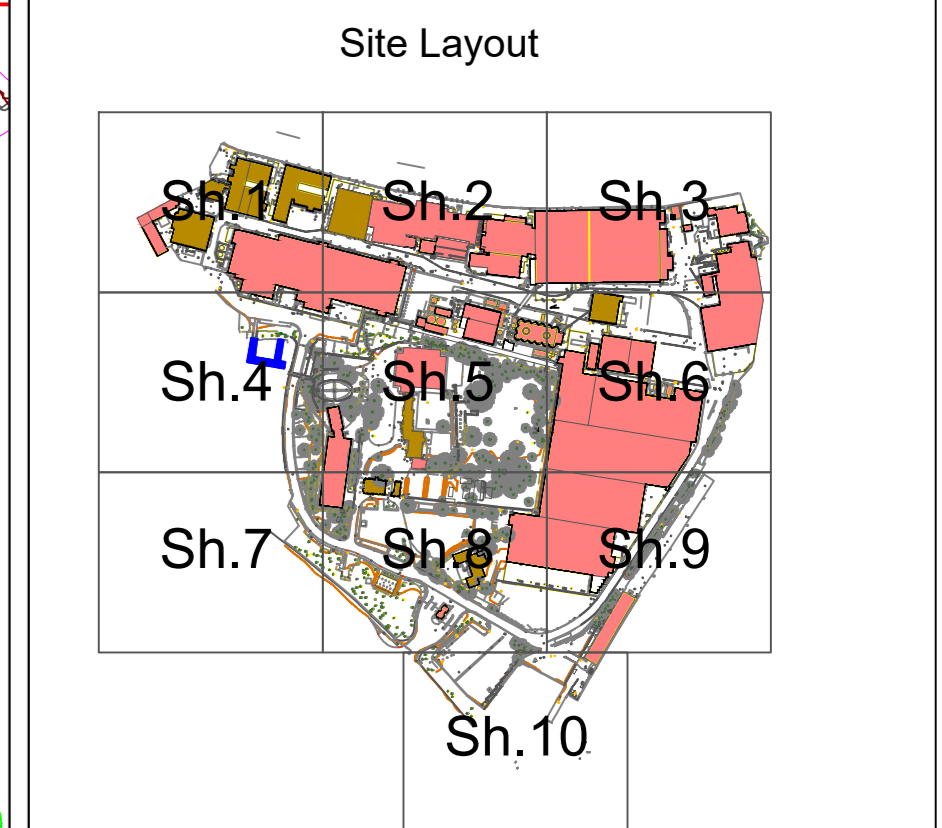
- Category A (Green)
- Category B (Blue)
- Category C (Grey)
- Category U (Dark Red)

- Category A**
 Trees of high quality with an estimated remaining life expectancy of at least 40 years.
- Category B**
 Trees of moderate quality with an estimated remaining expectancy of at least 20 years.
- Category C**
 Trees of low quality with an estimated remaining life expectancy of at least 10 years, or a stem diameter below 150mm.
- Category U**
 Trees in such a condition that they cannot realistically be retained as living trees in the context of the current land use for longer than 10 years.

Tree Groups
 BS5837 Category denoted by hatch colour. Red outline shows removal and yellow partial removal.

Proposed tree removals
 (Symbol: Red circle with blue dot)

Masterplan and Landscaping Plan
 See the Site Development Masterplan and Landscape Plan within the Design and Access Statement and Landscaping Plan for details of all hatch colours not listed in this key.



1	552055jrJune22_TCPpr_FV2.dwg	21/06/22
No.	Revision/Issue	Date

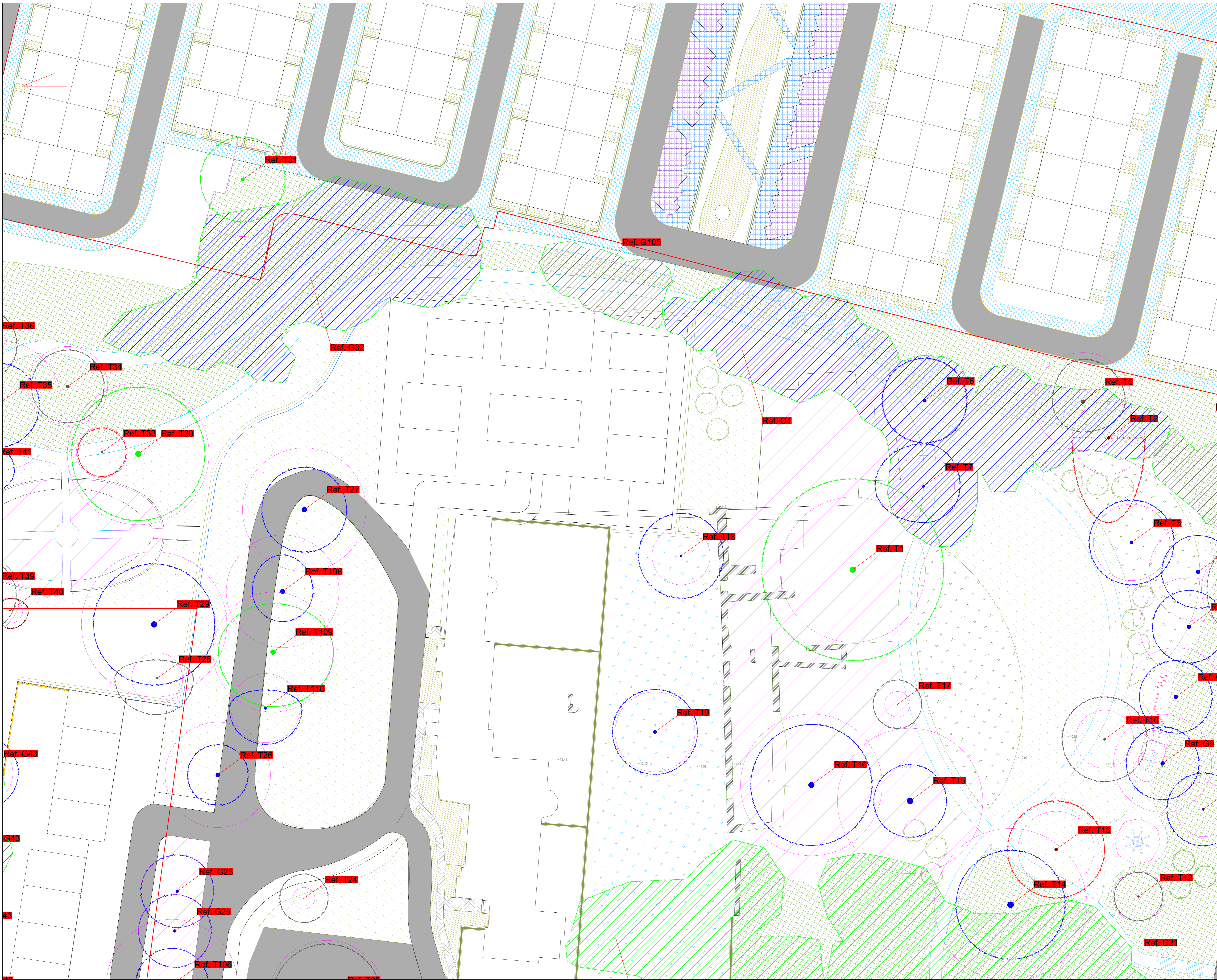


9 Holyrood Street, SE1 2EL
 Tel: 0203 544 4000

Project Name and Address
 Carrow Works
 Bracondale
 Norwich
 NR1 2DD

Project Carrow Works	Sheet Sheet 4
Date 21/05/2022	
Scale 1 to 200 at A0	

Tree Constraints Plan showing proposed layout against BS5837:2012 tree categories & Root Protection Areas



BS5837 Categories
Canopy and stem colour denotes BS5837 category. Pink denotes Root Protection Area.

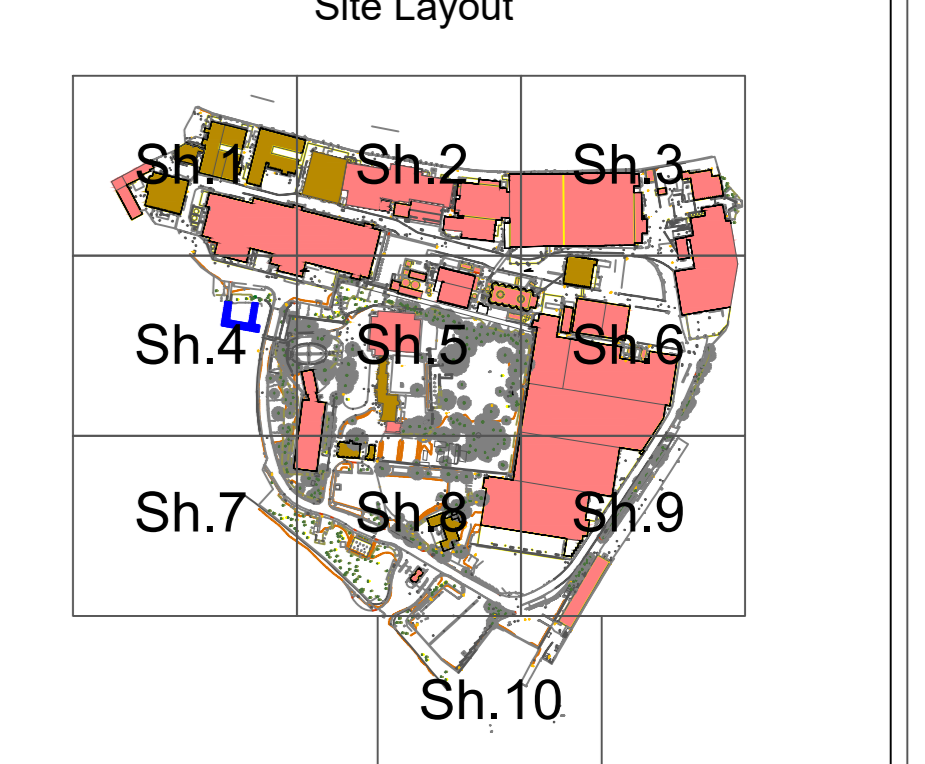
- Category A (Green)
- Category B (Blue)
- Category C (Grey)
- Category U (Dark Red)

- Category A**
Trees of high quality with an estimated remaining life expectancy of at least 40 years.
- Category B**
Trees of moderate quality with an estimated remaining expectancy of at least 20 years.
- Category C**
Trees of low quality with an estimated remaining life expectancy of at least 10 years, or a stem diameter below 150mm.
- Category U**
Trees in such a condition that they cannot realistically be retained as living trees in the context of the current land use for longer than 10 years.

Tree Groups
BS5837 Category denoted by hatch colour. Red outline shows removal and yellow partial removal.

Proposed tree removals
[Symbol: Red circle with red outline]

Masterplan and Landscaping Plan
See the Site Development Masterplan and Landscape Plan within the Design and Access Statement and Landscaping Plan for details of all hatch colours not listed in this key.



1	552055jrJune22_TCPpr_FV2.dwg	21/06/22
No.	Revision/Issue	Date



9 Holyrood Street, SE1 2EL
Tel: 0203 544 4000

Project Name and Address
Carrow Works
Bracondale
Norwich
NR1 2DD

Project Carrow Works	Sheet Sheet 5
Date 21/05/2022	
Scale 1 to 200 at A0	