

Dining Hall and Link Building above

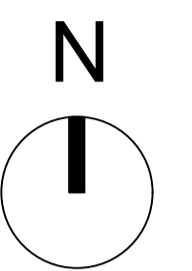
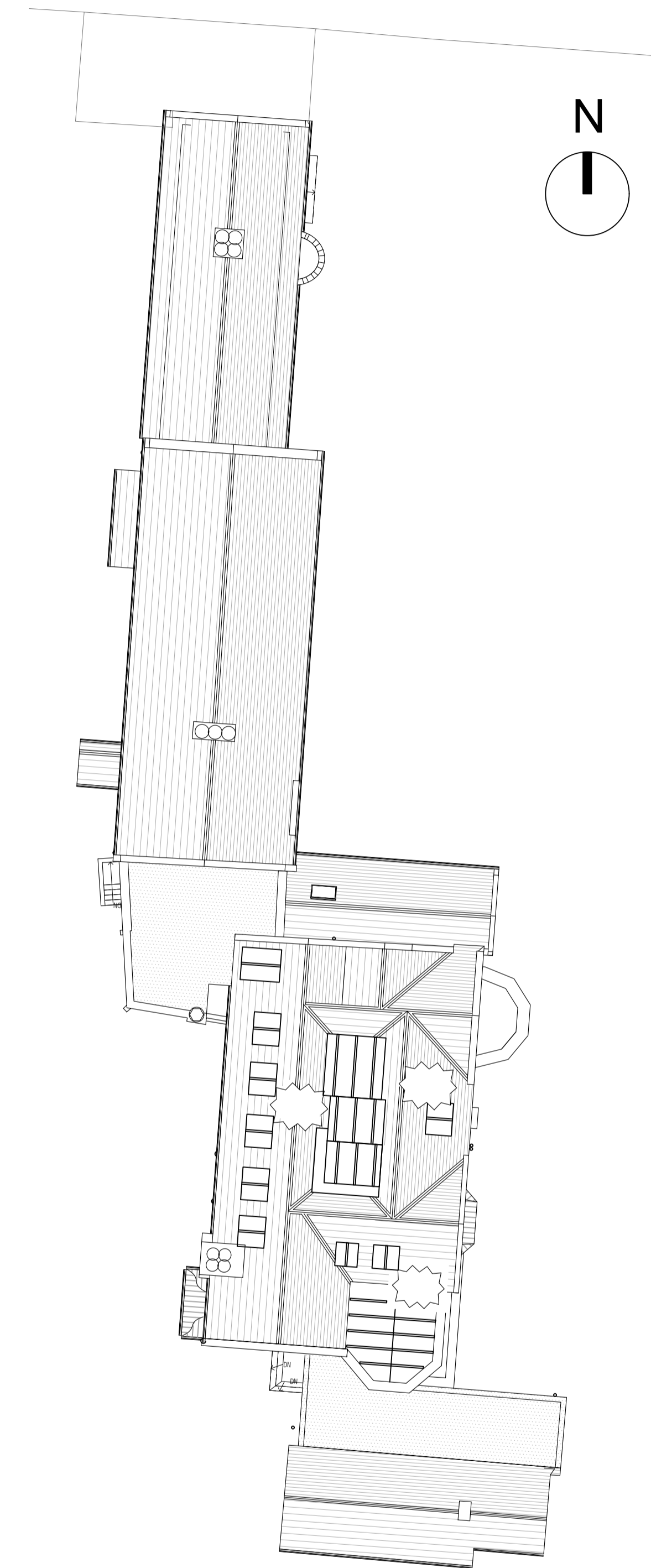
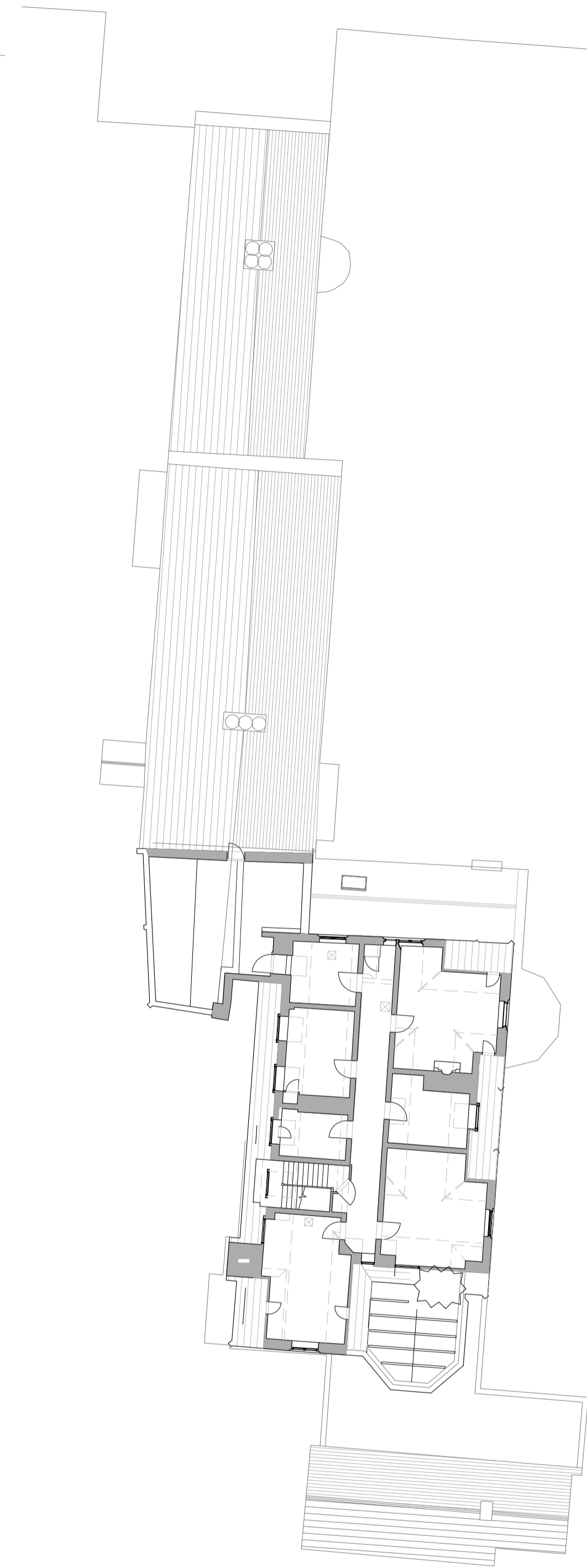
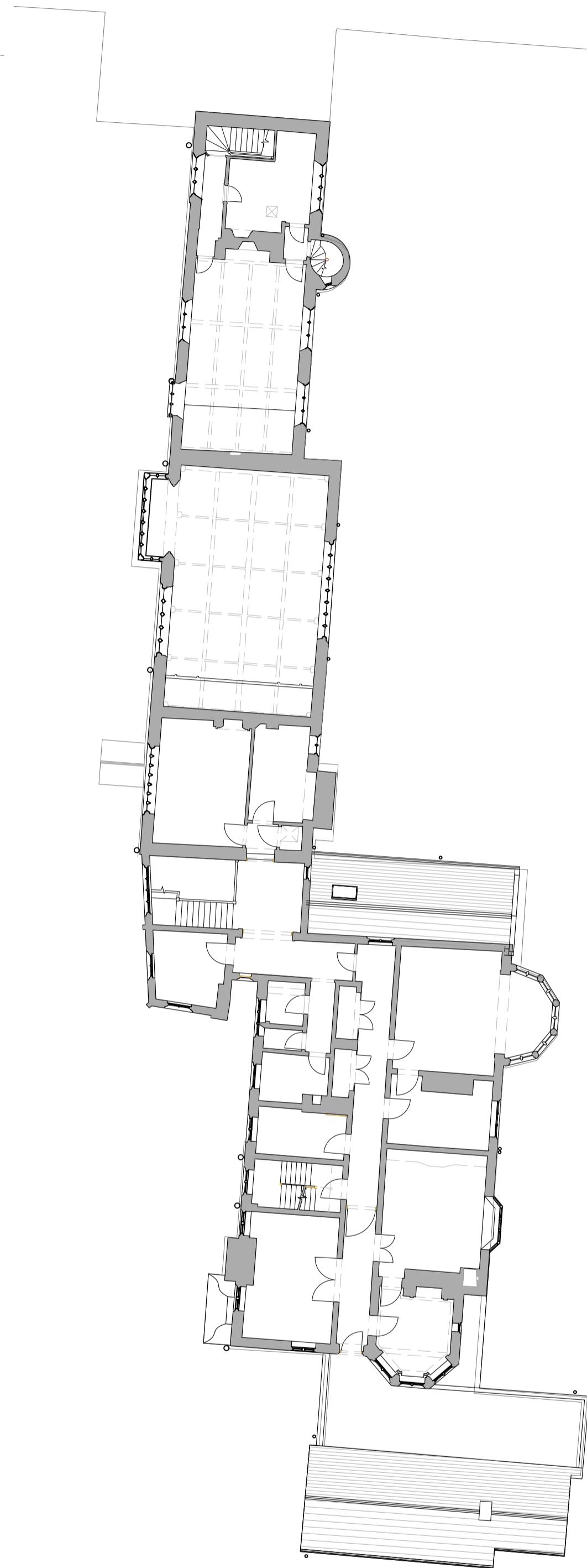
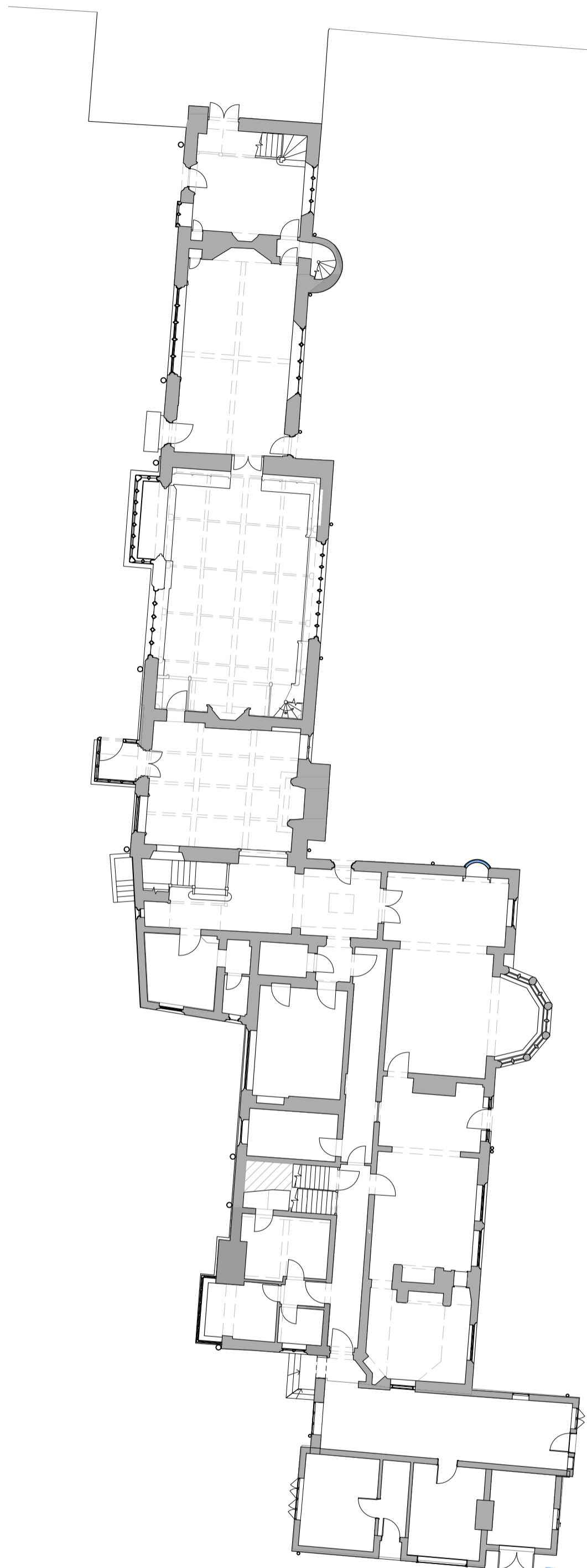
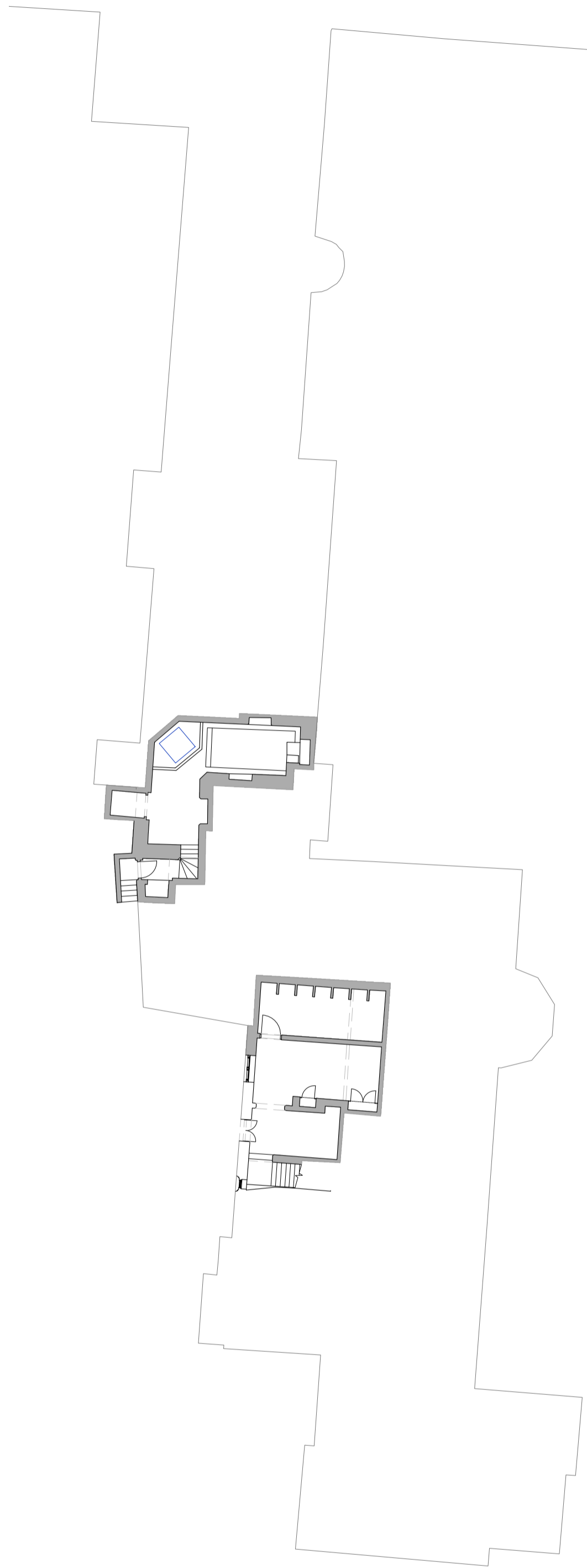
Dining Hall and Link Building

Dining Hall and Link Building

Dining Hall and Link Building

Dining Hall and Link Building

NOTES



1 Basement
1010 1:200

2 Ground Floor
1010 1:200

2 First Floor
1010 1:200

3 Second Floor
1010 1:200

4 Roof
1010 1:200

Refer to co-ordinated drawings:
DR-1000- series: Existing
DR-2000- series: Proposed
DR-5000- series: Demolition



Notes

- Any dwg format drawing is to be read in conjunction with and at the scale of the accompanying pdf.
- Where colours other than black or grey are used, the drawing must be plotted in colour.
- For status 'C' (Construction) drawings all dimensions are to be checked on site by the contractor, scaling is for Local Authority purposes only.
- Unless otherwise indicated, all dimensions are in millimeters.
- All information on this drawing is to be read in conjunction with the relevant Donald Insall Associates specification and trade contractors' drawings and information by specialists.
- In the event of any discrepancy, please contact us immediately.
- This drawing may contain survey information by others and is to be used solely for the purposes for which it was issued.
- These are uncontrolled documents issued for information purposes only. If you have any queries regarding the drawings, please contact DIA immediately.
- Please note DIA cannot be held responsible for any errors arising from changes made to an uncontrolled dwg file.

Drawing Status

- 1F Feasibility
- 2S Sketch Design
- 3P Planning
- 4B Building Control
- 4D Developed Design
- 4M Measurement
- 4T Tender
- 5C Construction
- 6R Record

Rev	Date	Dwn	Auth	Revision

Rev	Date	Dwn	Auth	Revision
3	29-06-22	NXA	-	Planning issue
2	27-06-22	NXA	-	Preparation for submission.
1	23-06-22	NXA	-	Roof Plan added
0	19-05-22	NXA	-	Initial Issue

Donald Insall Associates
Chartered Architects and Historic Building Consultants

Milton Hall, Ely Road,
Milton Cambridge CB24 6WZ
(+44) 01223 303 111
cambridge@insall-architects.co.uk

Carrow Works, Norwich

Carrow Abbey: Existing
Floor Plans

Project	CWN.01	No	DR-1010
Scale (A1)	1:200	Status	3P
		Revision	3