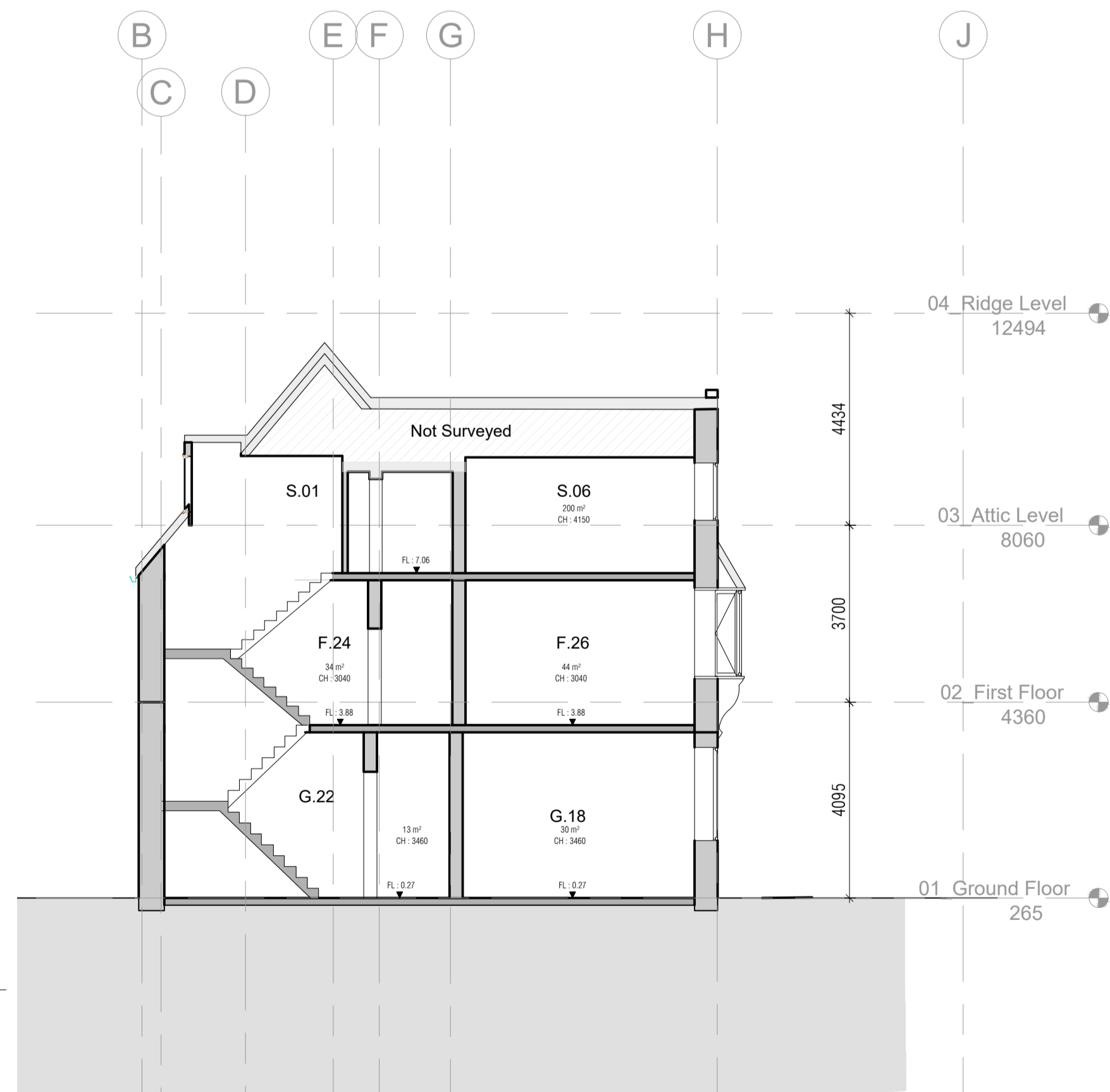


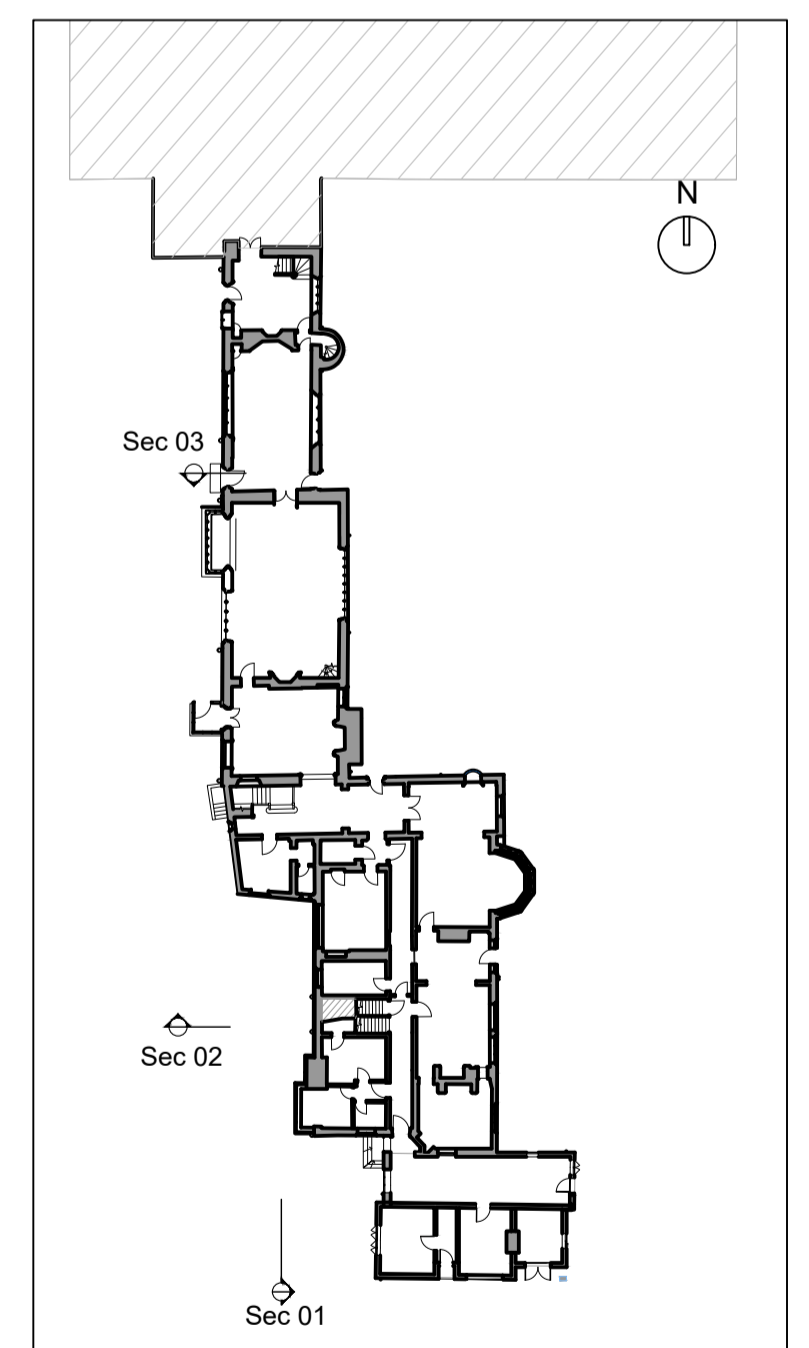
1 Section 01
1100 1:100



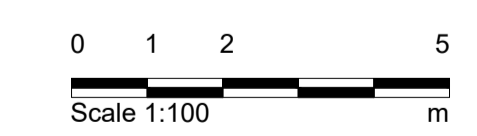
2 Section 02
1100 1:100



3 Section 03
1100 1:100



3 Key Plan
1100 NTS



Notes

- Any dwg format drawing is to be read in conjunction with and at the scale of the accompanying pdf.
- Where colours other than black or grey are used, the drawing must be plotted in colour.
- For status 'C' (Construction) drawings all dimensions are to be checked on site by the contractor, scaling is for Local Authority purposes only.
- Unless otherwise indicated, all dimensions are in millimeters.
- All information on this drawing is to be read in conjunction with the relevant Donald Insall Associates specification and trade contractors' drawings and information by specialists.
- In the event of any discrepancy, please contact us immediately.
- This drawing may contain survey information by others and is to be used solely for the purposes for which it was issued.
- These are uncontrolled documents issued for information purposes only. If you have any queries regarding the drawings, please contact DIA immediately.
- Please note DIA cannot be held responsible for any errors arising from changes made to an uncontrolled dwg file.

Drawing Status

- 1F Feasibility
- 2S Sketch Design
- 3P Planning
- 4B Building Control
- 4D Developed Design
- 4M Measurement
- 4T Tender
- 5C Construction
- 6R Record

Rev	Date	Dwn	Auth	Revision
2	29-06-22	NXA		Planning issue.
1	27-06-22	NXA		Additional section 03 included. Prepare for submission.
0	17-06-22	NXA		Initial Issue

Rev	Date	Dwn	Auth	Revision
2	29-06-22	NXA		Planning issue.
1	27-06-22	NXA		Additional section 03 included. Prepare for submission.
0	17-06-22	NXA		Initial Issue

Donald Insall Associates
Chartered Architects and Historic Building Consultants

Milton Hall, Ely Road,
Milton Cambridge CB24 6WZ
(+44) 01223 303 111
cambridge@insall-architects.co.uk

Carrow Works, Norwich

Carrow Abbey: Existing Sections

Project	CWN.01	No	DR-1100
Scale (A1)	1:100	Status	3P
		Revision	2