



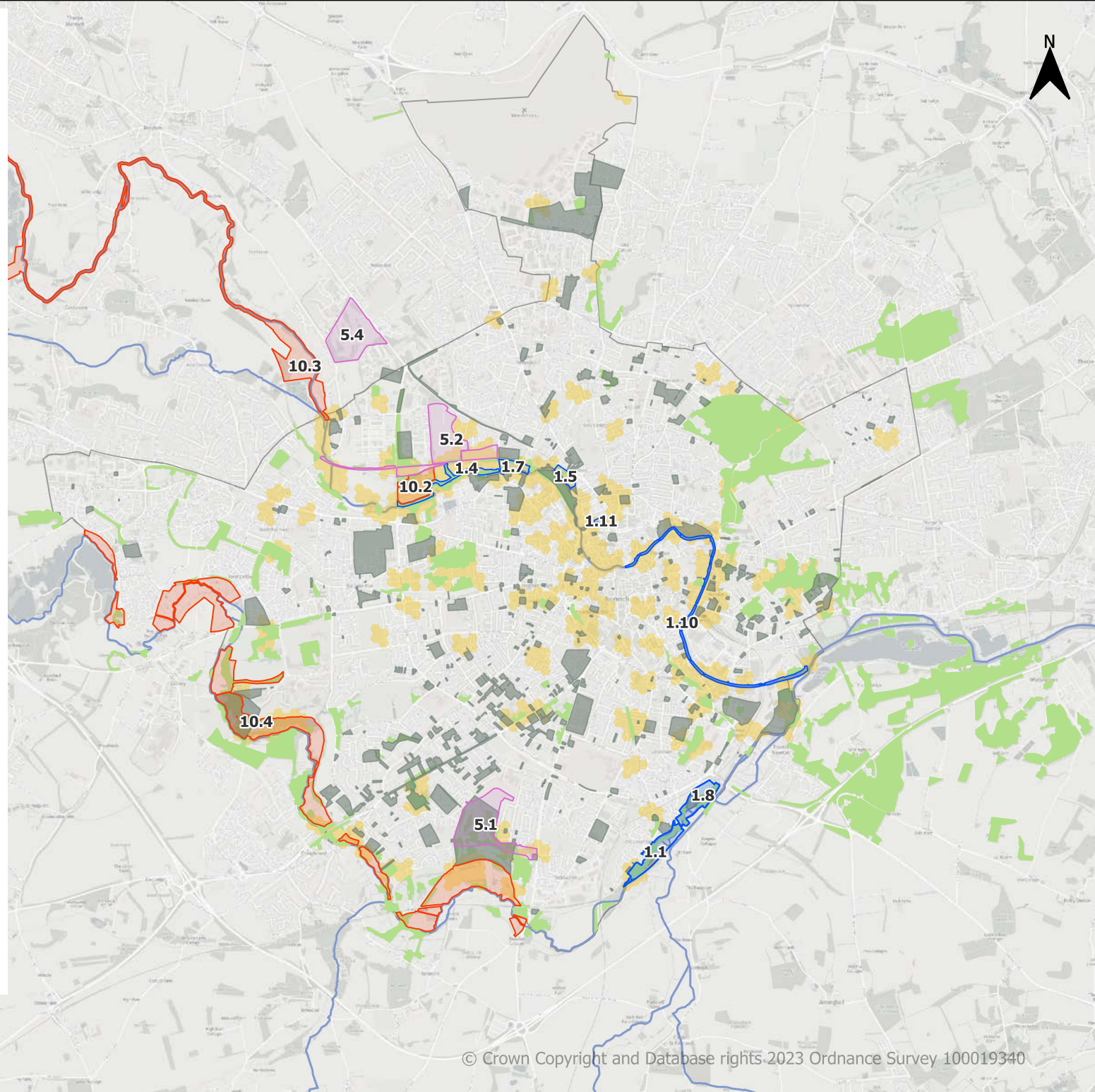


'Better' Opportunities

-  Main River
-  OP2.3-OP2.6: Creating diverse age structures within woodland; Increasing native tree diversity; opening up canopy; leave deadwood onsite (Map shows National Forest Inventory)
-  OP4.1-OP4.2: Tree Protection (Map shows TPO)
-  OP11.1a-OP11.1b: Manage Invasive Non-native Species across the city (Map shows INS records)

Site Specific Opportunities

- 1.1** OP1.1: Improve/restore wetland habitats through opening the canopy and appropriate/improved drainage and ditch network
- 1.4** OP1.4: Improve/restore wetland habitats through opening the canopy and appropriate/improved drainage and ditch network
- 1.5** OP1.5: Restore Wetland Habitats
- 1.7** OP1.7: Restore Wetland Habitats
- 1.8** OP1.8: Restore Wetland Habitats
- 1.10** OP1.10: Restore natural river function - recreating floodplain within existing river channel
- 1.11** OP1.11: Restore natural river function- Create connection with the River Wensum
- 10.2** OP10.2: Improve site condition at Sweetbriar Marshes
- 10.3** OP10.3: Improve site condition of the River Wensum SSSI
- 10.4** OP10.4: Improve site condition of the River Yare CWSs
- 5.1** OP5.1: Acid grassland/heathland restoration in Eaton area
- 5.2** OP5.2: Acid grassland restoration/creation complex in Sweetbriar area
- 5.4** OP5.4: Acid grassland/heathland restoration near Former Norwich Golf Course

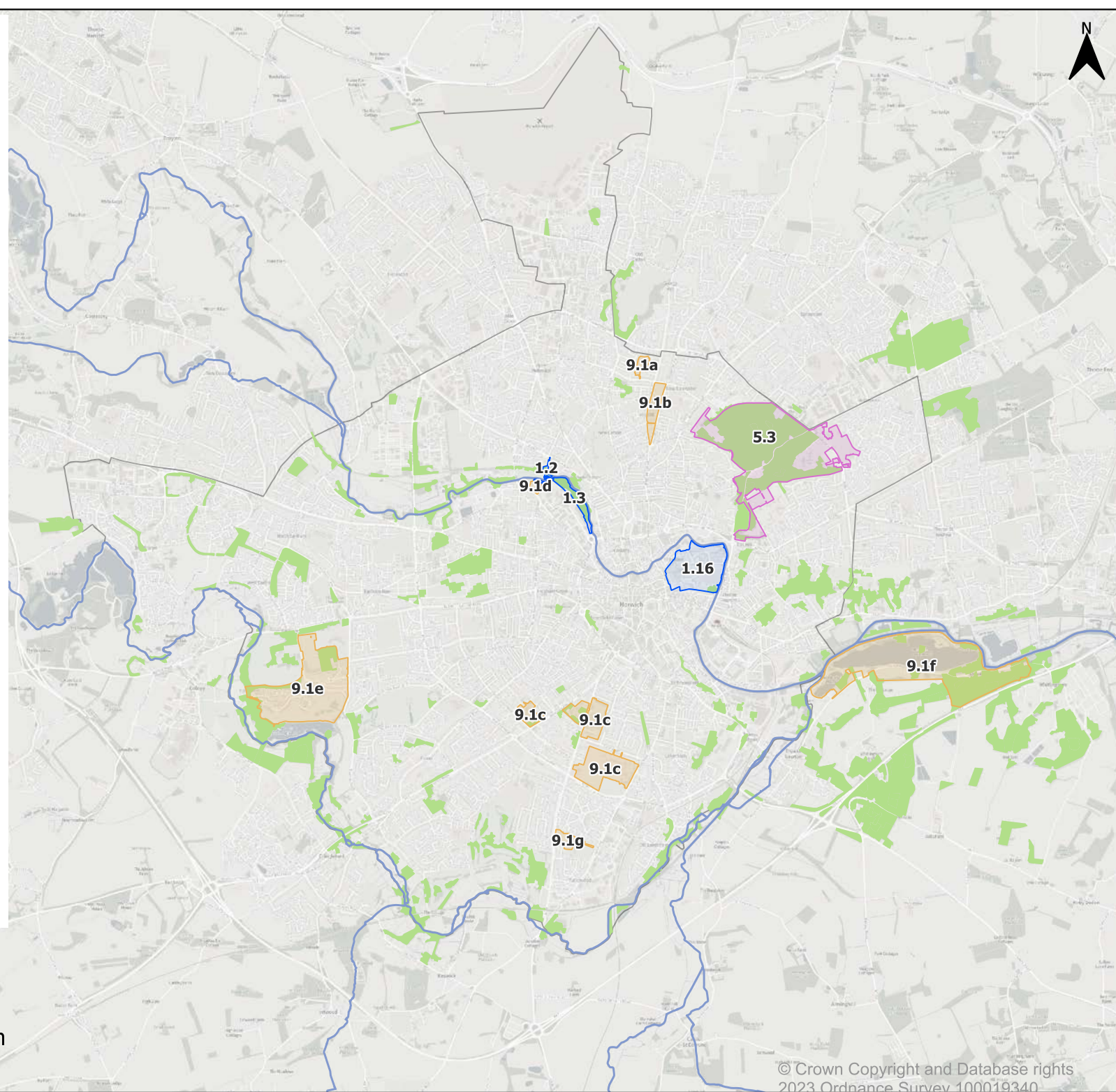


'Bigger' Opportunities





- Main River
- OP2.1-OP2.2: Increase woodland through natural regeneration; Increase woodland by planting trees close to existing woodland (Map shows National Forest Inventory)

Site Specific Opportunities


- 1.2** OP1.2: Opening up the tree canopy in the area north of the river, and ensuring appropriate/improved drainage to create wet glades, where possible in the limited space available.
- 1.3** OP1.3: Improve/restore wetland habitats through opening the canopy
- 1.16** OP1.16: Creation of wetland habitat - Wetland Features
- 5.3** OP5.3: Heathland expansion within historic extent of Mousehold Heath
- 9.1a** OP9.1a: Restoration of more biodiverse and historically sympathetic management regime for parkland/wood pasture
- 9.1b** OP9.1b: Restoration of more biodiverse and historically sympathetic management regime for parkland/wood pasture
- 9.1c** OP9.1c: Restoration of more biodiverse and historically sympathetic management regime for parkland/wood pasture
- 9.1d** OP9.1d: Restoration of more biodiverse and historically sympathetic management regime for parkland/wood pasture
- 9.1e** OP9.1g: Restoration of more biodiverse and historically sympathetic management regime for parkland/wood pasture
- 9.1f** OP9.1g: Restoration of more biodiverse and historically sympathetic management regime for parkland/wood pasture
- 9.1g** OP9.1f: Restoration of more biodiverse and historically sympathetic management regime for parkland/wood pasture

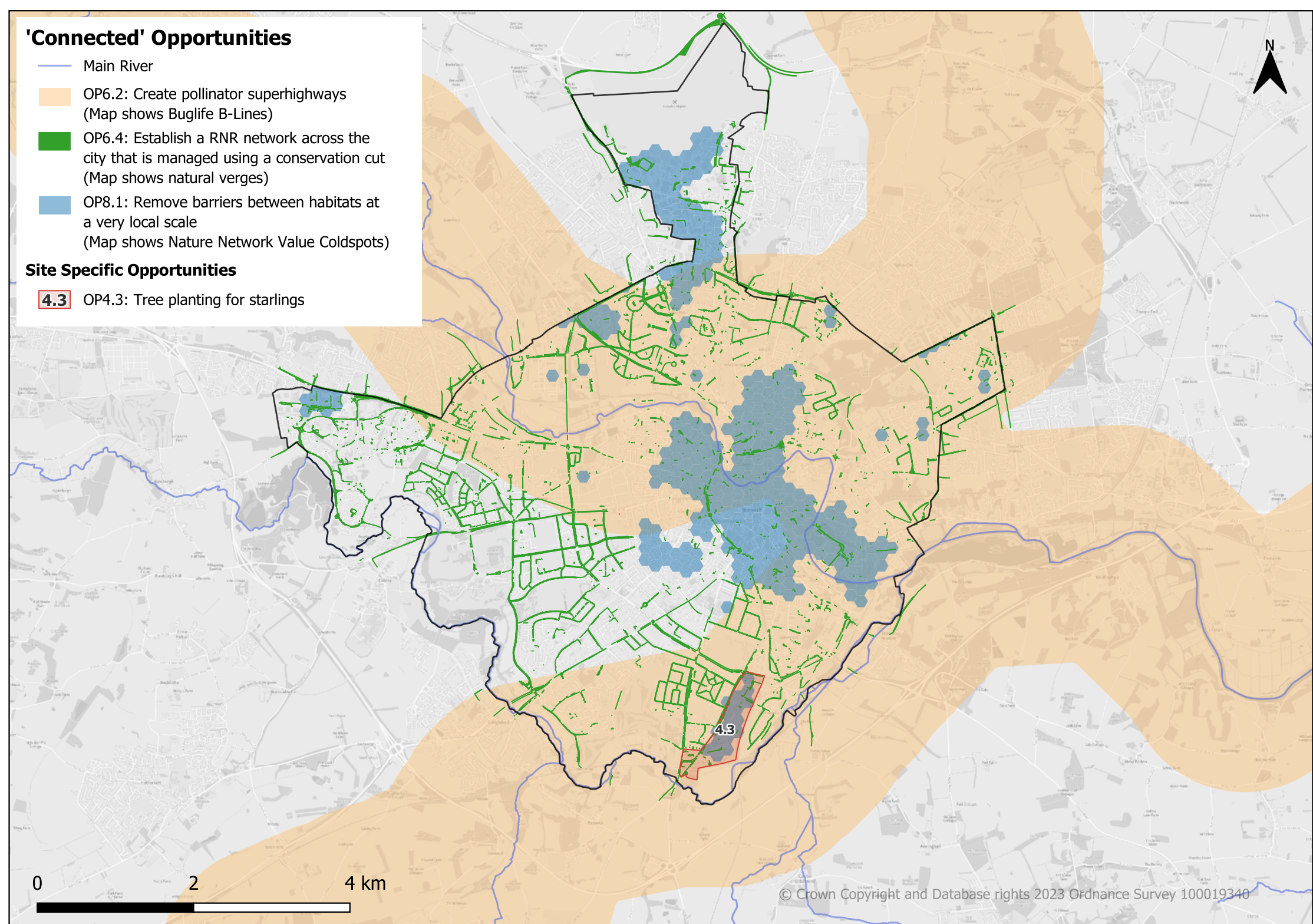


'Connected' Opportunities

-  Main River
-  OP6.2: Create pollinator superhighways (Map shows Buglife B-Lines)
-  OP6.4: Establish a RNR network across the city that is managed using a conservation cut (Map shows natural verges)
-  OP8.1: Remove barriers between habitats at a very local scale (Map shows Nature Network Value Coldspots)

Site Specific Opportunities

-  **4.3** OP4.3: Tree planting for starlings

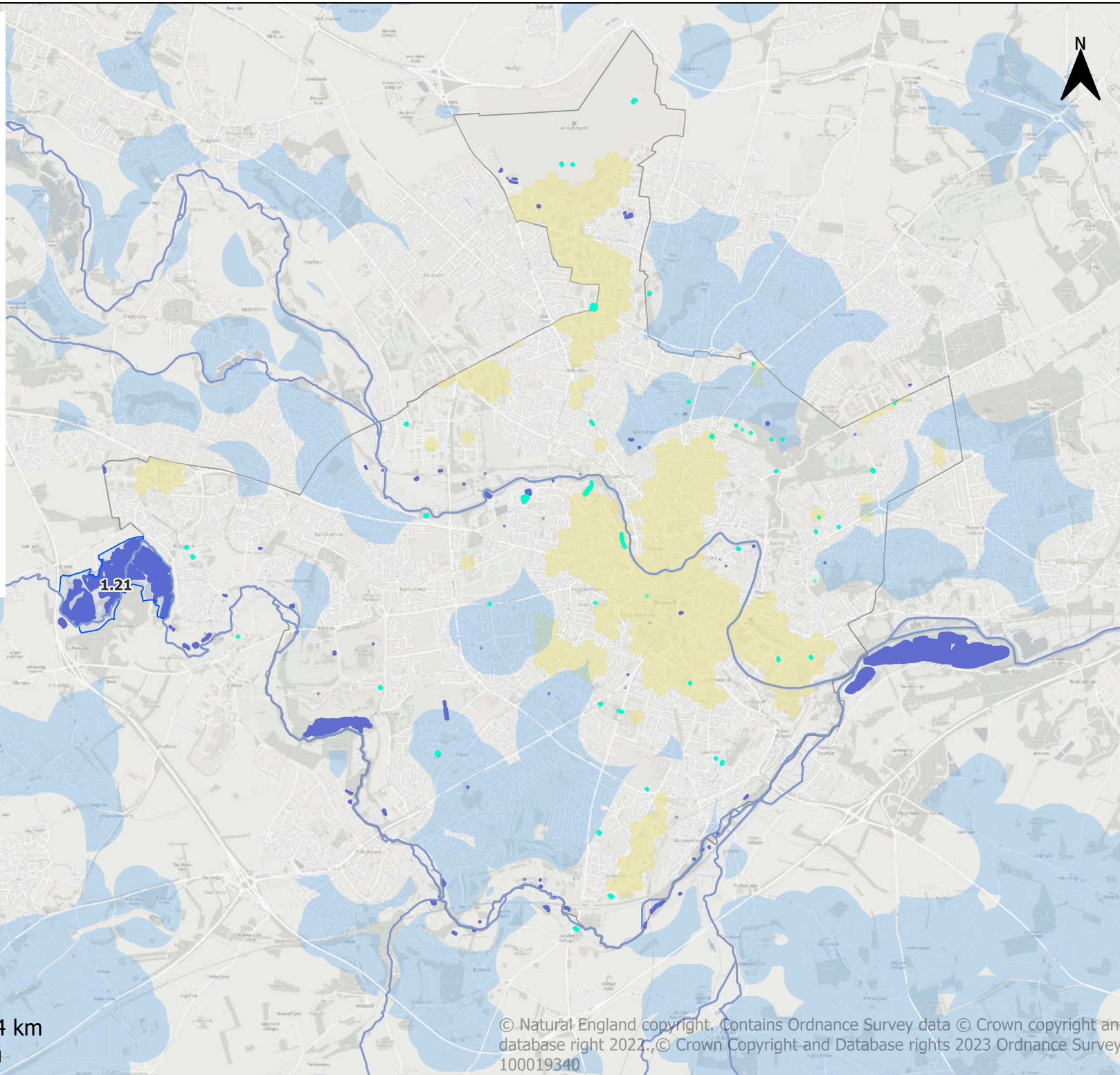


'More' Opportunities

- Main River
- OP1.13: Pond creation and restoration (Ghost Ponds)
(Map shows ghost pond locations)
- OP1.14: Pond creation and restoration
(Map shows current waterbodies)
- OP1.15: Pond creation and restoration (GCN DLL)
(Map shows GCN Core and Fringe Strategic Opportunity Areas)
- OP6.1: Creating native wildflower areas and meadows,
OP12.5: Create more community gardens, orchards and allotments,
OP12.12: Creating green roofs and walls, where appropriate
(Map shows Nature Network Value Coldspots)

Site Specific Opportunities

- 1.21** OP1.21: Improved wildlife designation of Bawburgh-Colney Lakes (in SNDC)



Priority Habitat

- Coastal and floodplain grazing marsh
- Coastal and floodplain grazing marsh, Lowland meadows
- Deciduous woodland
- Good quality semi improved grassland
- Lowland fens
- Lowland heathland
- Lowland meadows
- No main habitat but additional habitats present
- Purple moor grass and rush pastures
- Reedbeds
- Traditional orchard

