



Fig. 12: Floor Plan



Block C

Level 00

ROOM REF.	ROOM USE	DAYLIGHT QUANTUM	DAYLIGHT DISTRIBUTION		SUNLIGHT QUANTUM	
		ADF (%)	NSL (%)	RDC	ANNUAL	WINTER
BLOCK C - LEVEL 00						
269	L/K/D	1.9	72	N/A	41	10
270	Bedroom	2	97	MET	0	0
271	Bedroom	2.1	97	N/A	6	0
272	L/K/D	1.5	92	N/A	31	6
273	L/K/D	1.2	59	MET	33	5
274	Bedroom	1.7	94	MET	26	4
275	L/K/D	1.4	69	MET	29	0
276	Bedroom	1.8	92	MET	26	3
277	Bedroom	3.5	95	N/A	56	11
278	L/K/D	2.9	97	N/A	67	10

Table 12: Assessment Data

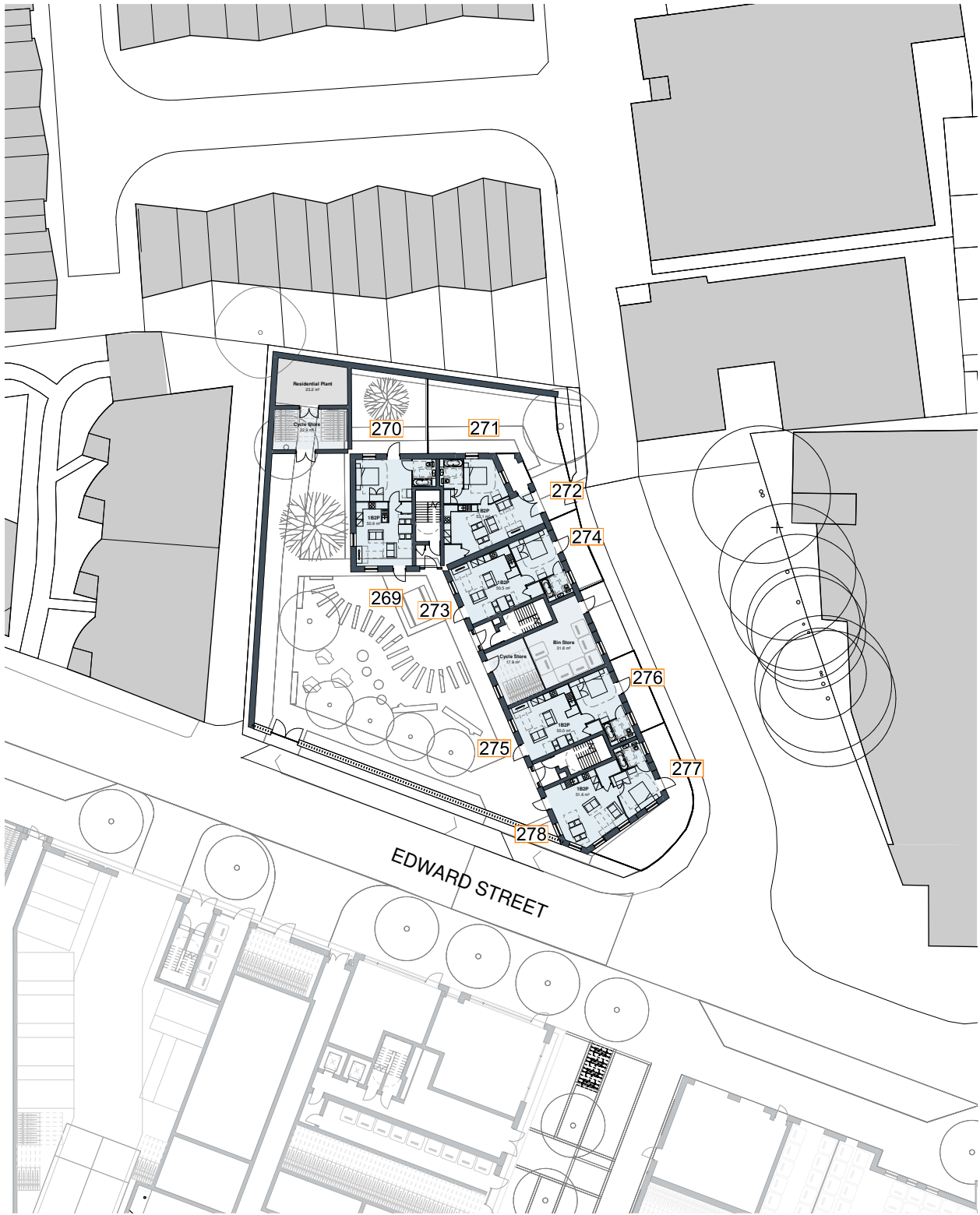


Fig. 13: Floor Plan



Block C

Level 01

ROOM REF.	ROOM USE	DAYLIGHT QUANTUM	DAYLIGHT DISTRIBUTION		SUNLIGHT QUANTUM	
		ADF (%)	NSL (%)	RDC	ANNUAL	WINTER
BLOCK C - LEVEL 01						
279	L/K/D	1.5	84	N/A	42	12
280	Bedroom	2.8	97	MET	1	0
281	Bedroom	2.6	97	N/A	6	0
282	L/K/D	1.7	99	N/A	31	6
283	L/K/D	1.3	93	MET	36	7
284	Bedroom	2	94	MET	27	4
285	Bedroom	1.9	91	MET	27	4
286	L/K/D	1.5	92	MET	39	6
287	L/K/D	1.5	87	MET	33	3
288	Bedroom	1.9	88	MET	27	4
289	Bedroom	4	98	N/A	60	15
290	L/K/D	3.6	99	N/A	76	13

Table 13: Assessment Data



Fig. 14: Floor Plan



Block C

Level 02

ROOM REF.	ROOM USE	DAYLIGHT QUANTUM	DAYLIGHT DISTRIBUTION		SUNLIGHT QUANTUM	
		ADF (%)	NSL (%)	RDC	ANNUAL	WINTER
BLOCK C - LEVEL 02						
291	L/K/D	2	99	N/A	60	20
292	Bedroom	3.2	97	MET	1	0
293	Bedroom	2.8	97	N/A	7	0
294	L/K/D	1.8	99	N/A	32	6
295	L/K/D	1.7	98	MET	43	9
296	Bedroom	2.1	94	MET	27	4
297	Bedroom	2	91	MET	27	4
298	L/K/D	1.8	98	MET	43	8
299	L/K/D	1.8	98	MET	43	8
300	Bedroom	1.9	88	MET	27	4
301	Bedroom	4.2	99	N/A	63	18
302	L/K/D	4.5	100	N/A	83	17

Table 14: Assessment Data



Fig. 15: Floor Plan



Block C

Level 03

ROOM REF.	ROOM USE	DAYLIGHT QUANTUM	DAYLIGHT DISTRIBUTION		SUNLIGHT QUANTUM	
		ADF (%)	NSL (%)	RDC	ANNUAL	WINTER
BLOCK C - LEVEL 03						
303	L/K/D	2.1	98	MET	48	13
304	Bedroom	2.1	94	MET	27	4
305	Bedroom	2	91	MET	27	4
306	L/K/D	2.2	98	MET	47	12
307	L/K/D	2.1	99	MET	46	11
308	Bedroom	2	88	MET	27	4
309	Bedroom	4.3	99	N/A	66	21
310	L/K/D	4.7	100	N/A	90	23

Table 15: Assessment Data

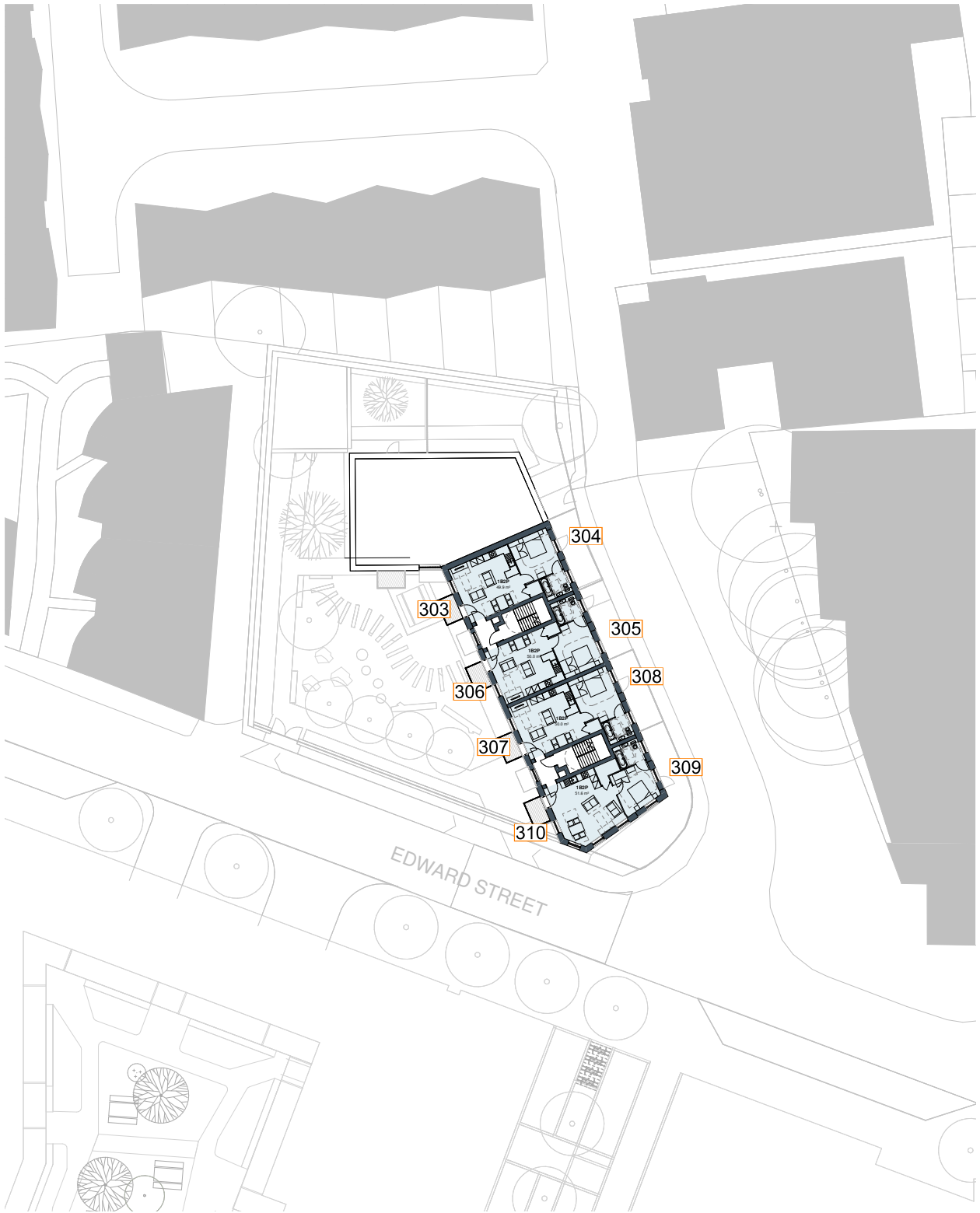


Fig. 16: Floor Plan



Block D

Level 01

ROOM REF.	ROOM USE	DAYLIGHT QUANTUM	DAYLIGHT DISTRIBUTION		SUNLIGHT QUANTUM	
		ADF (%)	NSL (%)	RDC	ANNUAL	WINTER
BLOCK D - LEVEL 01						
311	Bedroom	5	100	N/A	21	3
312	Bedroom	3.1	99	N/A	10	0
313	L/K/D	1.9	95	N/A	30	3
314	Bedroom	0.7	16	MET	7	0
315	Living Room	0.8	16	MET	7	0
316	Bedroom	0.7	21	MET	8	0
317	Bedroom	0.4	14	MET	6	0
318	L/K/D	0.5	13	N/A	4	0
319	Bedroom	1.6	35	MET	20	6
320	Bedroom	1.6	96	MET	8	0
321	L/K/D	2.2	98	MET	8	0
322	Bedroom	3.4	98	MET	8	0
323	Bedroom	1.6	96	MET	8	0
324	L/K/D	3.9	99	N/A	55	13
325	Bedroom	0.9	66	MET	39	7
326	Bedroom	1.4	80	MET	42	9
327	L/K/D	0.8	49	MET	34	6

Table 16: Assessment Data

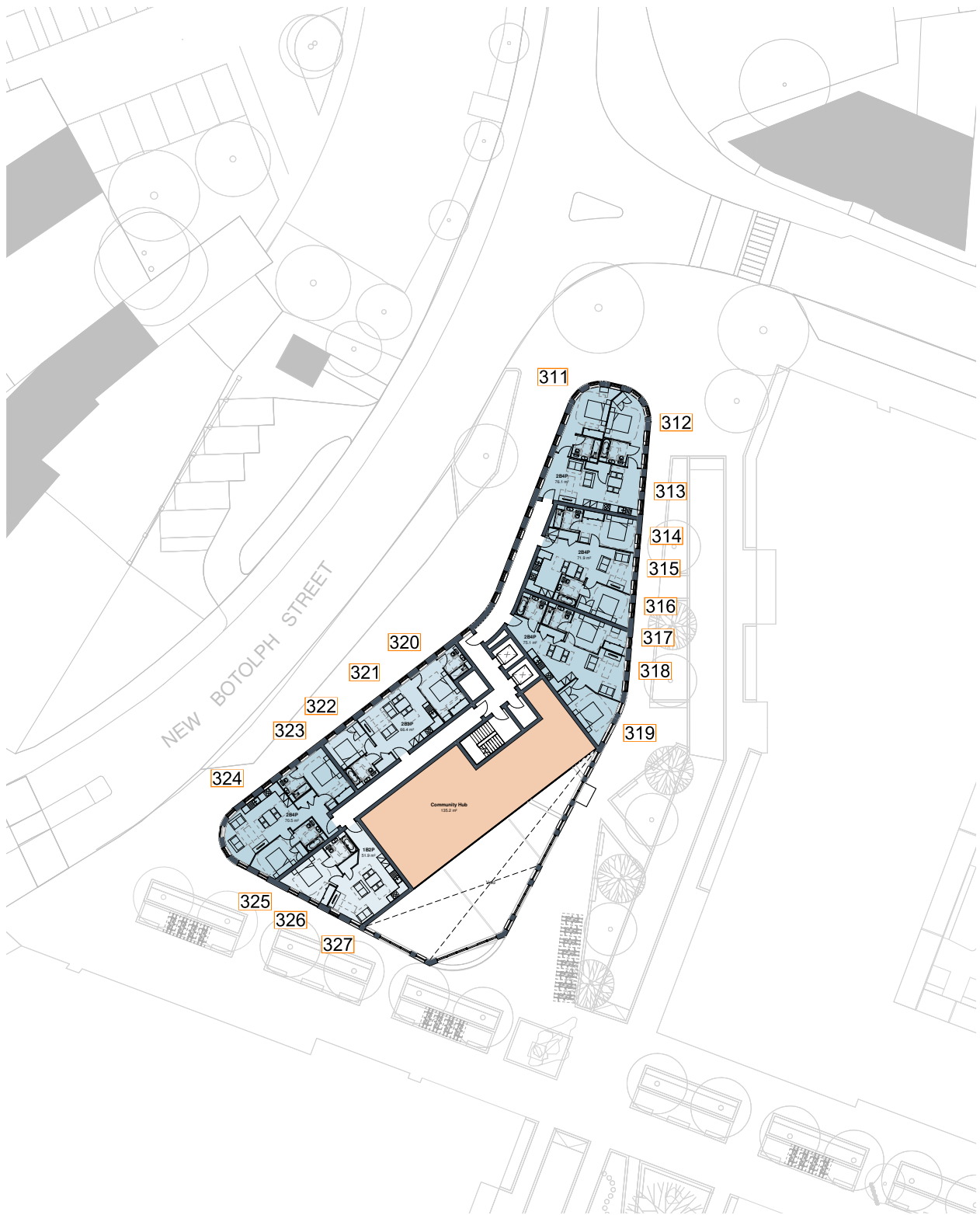


Fig. 17: Floor Plan



Block D

Level 02

ROOM REF.	ROOM USE	DAYLIGHT QUANTUM	DAYLIGHT DISTRIBUTION		SUNLIGHT QUANTUM	
		ADF (%)	NSL (%)	RDC	ANNUAL	WINTER
BLOCK D - LEVEL 02						
328	Bedroom	5	98	N/A	18	2
329	Bedroom	3.2	98	N/A	14	2
330	L/K/D	2.1	96	N/A	30	4
331	Bedroom	0.9	26	MET	13	2
332	Living Room	0.9	24	MET	12	1
333	Bedroom	0.9	34	MET	12	0
334	Bedroom	0.5	23	MET	6	0
335	L/K/D	0.5	23	N/A	13	0
336	Bedroom	1.1	44	MET	18	3
337	Bedroom	1.6	82	MET	31	10
338	L/K/D	1.6	85	MET	37	12
339	Bedroom	1.3	73	MET	37	11
340	L/K/D	1.3	69	MET	41	12
341	Bedroom	1.4	86	MET	41	9
342	L/K/D	2.1	98	N/A	67	13
343	Bedroom	1.8	96	MET	45	12
344	Bedroom	1.1	92	MET	48	15
345	L/K/D	3.8	100	N/A	57	16
346	Bedroom	1.5	94	MET	8	0
347	Bedroom	3.3	97	MET	8	0
348	L/K/D	2.2	98	MET	8	0
349	Bedroom	1.6	95	MET	8	0

Table 17: Assessment Data

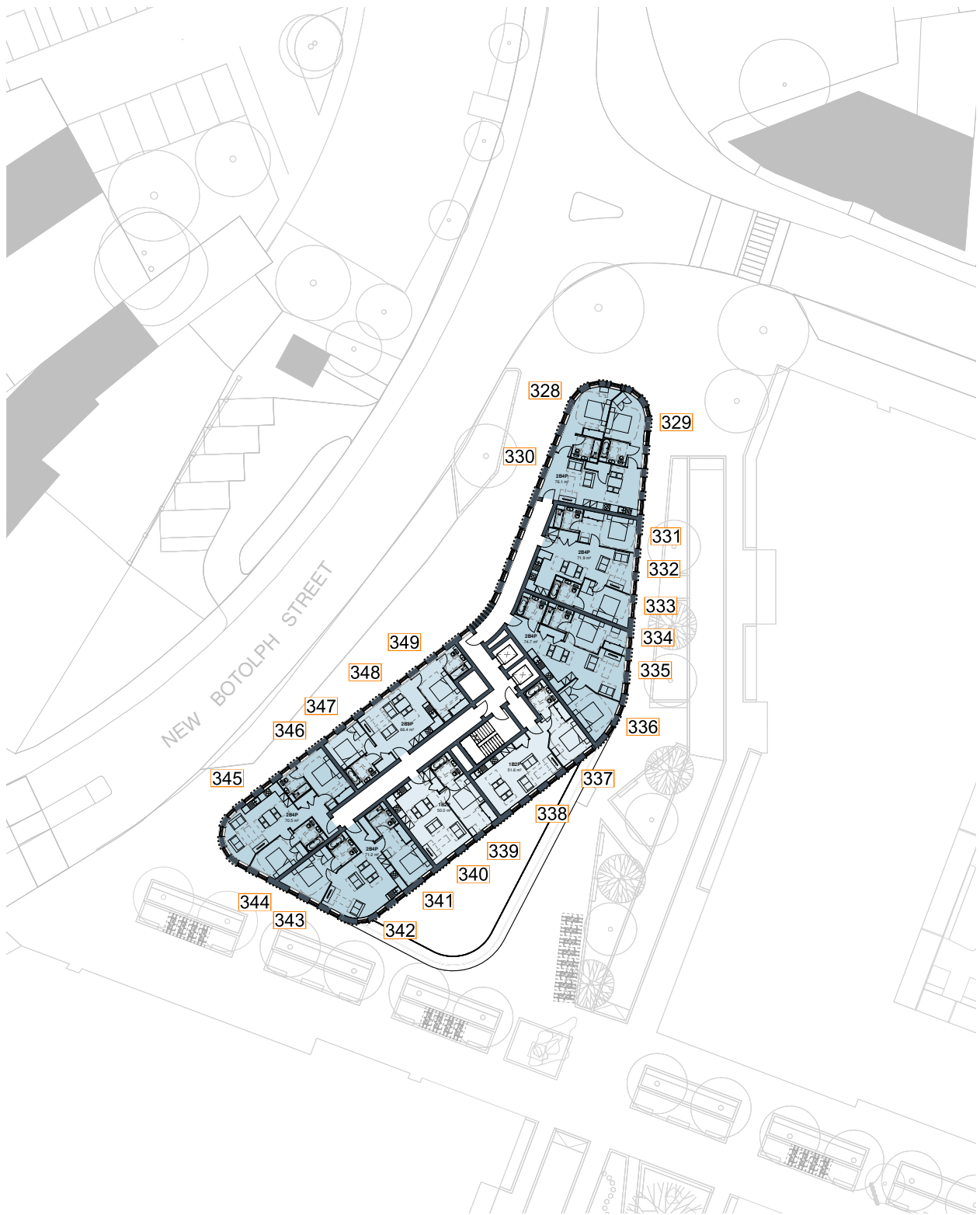


Fig. 18: Floor Plan



Block D

Level 03

ROOM REF.	ROOM USE	DAYLIGHT QUANTUM	DAYLIGHT DISTRIBUTION		SUNLIGHT QUANTUM	
		ADF (%)	NSL (%)	RDC	ANNUAL	WINTER
BLOCK D - LEVEL 03						
350	Bedroom	5.1	98	N/A	19	2
351	Bedroom	3.7	98	N/A	22	2
352	L/K/D	2.3	97	N/A	36	4
353	Bedroom	1.1	44	MET	18	2
354	Living Room	1.2	34	MET	20	2
355	Bedroom	1.1	52	MET	19	2
356	Bedroom	0.7	43	MET	15	0
357	L/K/D	0.7	42	N/A	17	0
358	Bedroom	1.4	75	MET	29	6
359	Bedroom	1.9	89	MET	40	12
360	L/K/D	1.5	90	MET	44	13
361	Bedroom	1.2	82	MET	45	13
362	L/K/D	1.2	91	MET	47	14
363	Bedroom	1.3	92	MET	45	12
364	L/K/D	2	99	N/A	75	20
365	Bedroom	2	96	MET	51	18
366	Bedroom	1.2	97	MET	51	18
367	L/K/D	3.9	100	N/A	61	20
368	Bedroom	1.5	94	MET	8	0
369	Bedroom	3.3	97	MET	8	0
370	L/K/D	2.2	98	MET	8	0
371	Bedroom	1.5	95	MET	8	0

Table 18: Assessment Data

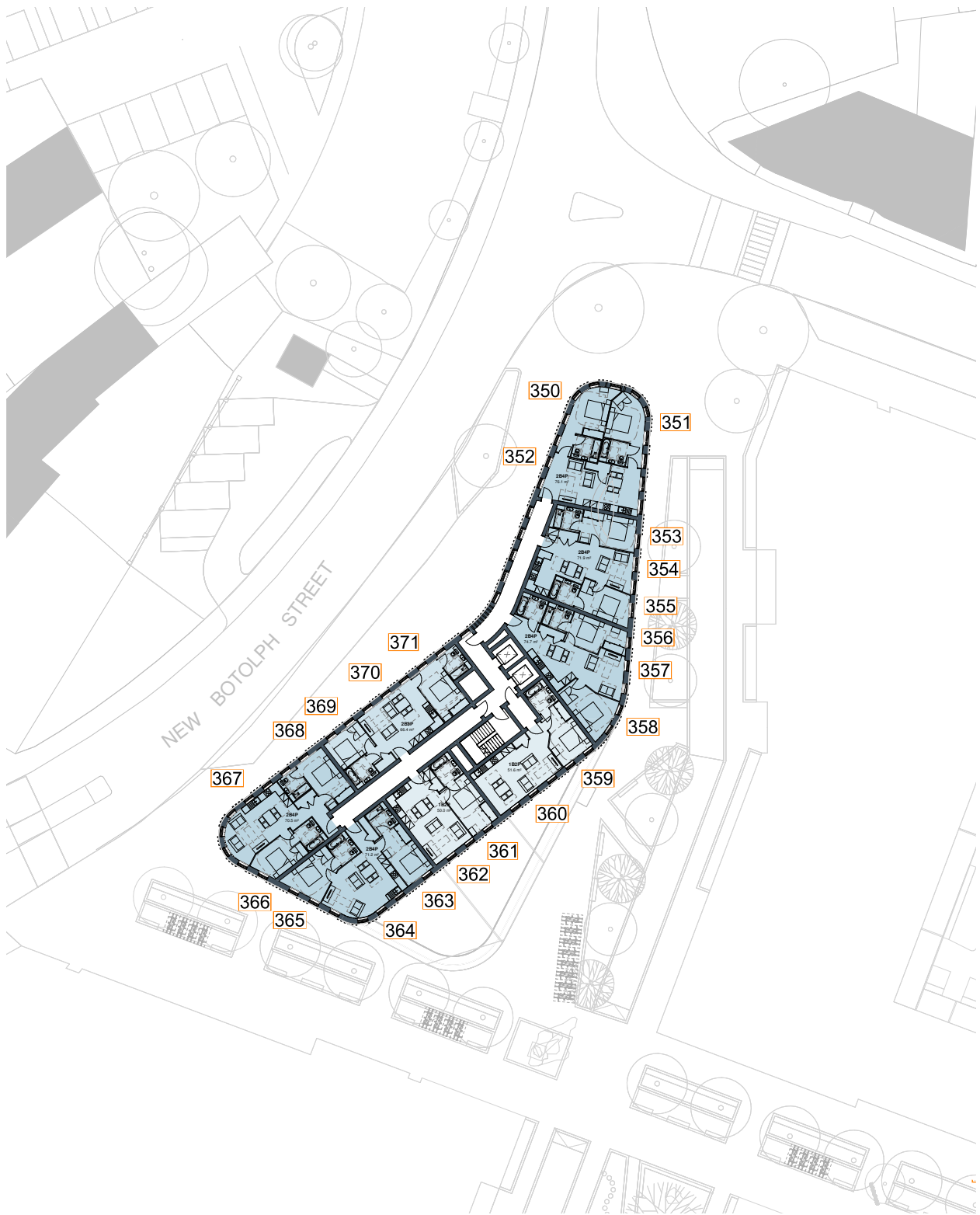


Fig. 19: Floor Plan



Block J3

Level 01

ROOM REF.	ROOM USE	DAYLIGHT QUANTUM	DAYLIGHT DISTRIBUTION		SUNLIGHT QUANTUM	
		ADF (%)	NSL (%)	RDC	ANNUAL	WINTER
BLOCK J3 - LEVEL 01						
372	Bedroom	2.8	77	N/A	21	3
373	L/K/D	1.2	22	MET	19	7
374	Bedroom	3.3	100	N/A	31	6
375	L/K/D	2.2	99	MET	31	6
376	Bedroom	3.9	98	MET	30	5
377	L/K/D	2.2	99	MET	30	5
378	Bedroom	3.7	98	MET	30	5
379	Bedroom	3.2	98	MET	30	5
380	Bedroom	3	93	N/A	70	27
381	Living Room	1.5	62	MET	15	5

Table 19: Assessment Data



Fig. 20: Floor Plan



Block J3

Level 02

ROOM REF.	ROOM USE	DAYLIGHT QUANTUM	DAYLIGHT DISTRIBUTION		SUNLIGHT QUANTUM	
		ADF (%)	NSL (%)	RDC	ANNUAL	WINTER
BLOCK J3 - LEVEL 02						
382	Bedroom	3	92	N/A	30	8
383	L/K/D	1.8	32	MET	32	8
384	Bedroom	2.9	100	N/A	31	5
385	L/K/D	1.8	97	MET	31	5
386	Bedroom	3.3	96	MET	31	5
387	L/K/D	1.9	97	MET	31	5
388	Bedroom	3.1	96	MET	31	5
389	Bedroom	2.6	94	MET	31	5
390	Bedroom	3.5	96	N/A	76	27
391	Living Room	2.4	82	MET	38	12

Table 20: Assessment Data



Fig. 21: Floor Plan



Block KL

Level 01

ROOM REF.	ROOM USE	DAYLIGHT QUANTUM	DAYLIGHT DISTRIBUTION		SUNLIGHT QUANTUM	
		ADF (%)	NSL (%)	RDC	ANNUAL	WINTER
BLOCK KL - LEVEL 01						
392	Bedroom	1.9	95	MET	0	0
393	Bedroom	1.9	87	MET	0	0
394	Bedroom	1.7	87	MET	0	0
395	Bedroom	1.5	71	MET	0	0
396	L/K/D	2	72	N/A	33	8
397	Bedroom	1.6	79	MET	30	6
398	L/K/D	1.3	51	MET	33	8
399	Bedroom	1.7	72	MET	30	6
400	L/K/D	1.3	52	MET	33	8
401	Bedroom	1.7	72	MET	30	6
402	L/K/D	1.4	53	MET	33	8
403	Bedroom	1.7	74	MET	30	6
404	L/K/D	1.4	63	MET	34	9
405	Bedroom	1.8	83	MET	33	7
406	L/K/D	1.5	79	MET	36	9
407	Bedroom	1.9	96	MET	33	7

Table 21: Assessment Data



Fig. 22: Floor Plan



Block KL

Level 02

ROOM REF.	ROOM USE	DAYLIGHT QUANTUM	DAYLIGHT DISTRIBUTION		SUNLIGHT QUANTUM	
		ADF (%)	NSL (%)	RDC	ANNUAL	WINTER
BLOCK KL - LEVEL 02						
408	L/K/D	1.9	89	N/A	57	19
409	L/K/D	3.4	98	N/A	62	19
410	L/K/D	3.2	99	N/A	62	19
411	L/K/D	2.8	97	N/A	60	16
412	Bedroom	0.6	61	MET	2	2
413	L/K/D	0.8	73	MET	50	9
414	Bedroom	1.4	58	MET	50	8
415	L/K/D	1.9	92	N/A	55	12
416	Bedroom	3.2	79	MET	5	0
417	Bedroom	2.5	99	MET	18	0
418	Bedroom	1.7	69	MET	18	2
419	L/K/D	1	44	MET	28	4
420	L/K/D	1.5	64	MET	29	1
421	Bedroom	2.6	99	MET	24	2
422	Bedroom	1.9	55	MET	20	3
423	L/K/D	1	53	MET	30	6
424	Bedroom	2.5	98	MET	33	5
425	L/K/D	1.6	67	MET	34	6
426	Bedroom	2.3	84	MET	22	4
427	L/K/D	1	72	MET	32	6
428	Bedroom	2.4	91	MET	29	5
429	Bedroom	2.1	90	MET	33	7
430	Bedroom	1.9	93	MET	23	4
431	L/K/D	1	67	MET	31	6
432	Bedroom	1.6	80	MET	19	4
433	Bedroom	2.1	65	MET	0	0
434	Bedroom	2	70	MET	0	0
435	L/K/D	2.4	100	N/A	28	12
436	Bedroom	2.5	87	MET	0	0
437	L/K/D	3.6	100	N/A	30	16
438	L/K/D	3.3	91	N/A	40	16
439	Bedroom	2.1	94	MET	1	0
440	L/K/D	1.8	68	N/A	27	9
441	Bedroom	3	98	MET	1	0
442	L/K/D	3.2	100	N/A	40	9
443	Bedroom	1.9	99	MET	36	7
444	L/K/D	1.5	89	MET	37	9
445	Bedroom	1	27	MET	19	3
446	L/K/D	1.3	22	MET	12	1
447	Bedroom	1.9	99	MET	35	7
448	L/K/D	1.5	94	MET	39	9
449	Bedroom	1.7	54	MET	18	3
450	L/K/D	1.2	27	MET	19	4
451	Bedroom	1.9	99	MET	36	7
452	L/K/D	1.6	97	MET	39	9
453	Bedroom	2	99	MET	37	8
454	Bedroom	1.7	32	MET	16	1
455	L/K/D	1.2	25	MET	18	3
456	L/K/D	1.6	99	MET	41	11
457	Bedroom	2	99	MET	38	9
458	Bedroom	1.7	31	MET	17	1
459	L/K/D	1.5	26	MET	13	0
460	L/K/D	1.8	100	MET	41	11
461	Bedroom	2	99	MET	37	8
462	Bedroom	1.5	31	MET	2	0

Table 22: Assessment Data

Block KL

Level 03

ROOM REF.	ROOM USE	DAYLIGHT QUANTUM	DAYLIGHT DISTRIBUTION		SUNLIGHT QUANTUM	
		ADF (%)	NSL (%)	RDC	ANNUAL	WINTER
BLOCK KL - LEVEL 03						
463	Bedroom	2.2	96	MET	56	20
464	Bedroom	2	81	MET	58	21
465	Bedroom	2.2	74	MET	0	0
466	Bedroom	4.1	90	MET	68	21
467	Bedroom	4.3	97	MET	0	0
468	Bedroom	4.3	97	MET	0	0
469	Bedroom	3.7	92	MET	68	22
470	Bedroom	3.1	92	MET	64	17
471	Bedroom	3.5	90	MET	0	0
472	Bedroom	0.5	62	MET	1	1
473	L/K/D	0.9	75	MET	59	14
474	Bedroom	1.8	74	MET	56	13
475	L/K/D	2.4	95	N/A	63	17
476	Bedroom	3.8	93	MET	8	0
477	Bedroom	2.8	99	MET	33	3
478	Bedroom	2	79	MET	24	3
479	L/K/D	1.1	48	MET	33	6
480	L/K/D	1.3	99	MET	36	6
481	Bedroom	2.9	99	MET	32	7
482	Bedroom	2.8	99	MET	39	9
483	Bedroom	2.1	67	MET	25	3
484	L/K/D	1.2	60	MET	34	7
485	L/K/D	1.4	98	MET	39	9
486	Bedroom	2.7	92	MET	34	7
487	Bedroom	2.5	91	MET	26	4
488	L/K/D	1.2	81	MET	35	7
489	Bedroom	2.1	97	MET	26	4
490	Bedroom	2.9	99	MET	38	9
491	L/K/D	1.2	79	MET	32	7
492	Bedroom	1.8	88	MET	23	4
493	Bedroom	2.4	74	MET	0	0
494	Bedroom	2.9	93	MET	0	0
495	L/K/D	3.2	99	N/A	24	7
496	Bedroom	4.5	99	MET	0	0
497	L/K/D	4.4	100	N/A	61	19
498	L/K/D	4.5	100	N/A	71	21
499	Bedroom	4.4	100	MET	1	0
500	L/K/D	2.3	96	N/A	19	4
501	Bedroom	1.5	92	MET	0	0
502	L/K/D	2.7	100	N/A	48	14
503	Bedroom	2.3	99	MET	44	11
504	L/K/D	1.8	100	MET	48	14
505	Bedroom	1.6	45	MET	26	5
506	L/K/D	1.5	34	MET	27	6
507	Bedroom	2.3	99	MET	44	11
508	L/K/D	1.9	100	MET	48	14
509	Bedroom	2.6	80	MET	28	6
510	L/K/D	1.5	33	MET	29	7
511	Bedroom	2.3	99	MET	43	11
512	L/K/D	1.9	100	MET	47	14
513	Bedroom	2.3	99	MET	45	12
514	Bedroom	2	43	MET	27	6
515	L/K/D	1.7	32	MET	29	7
516	L/K/D	1.9	100	MET	47	14

Table 23: Assessment Data

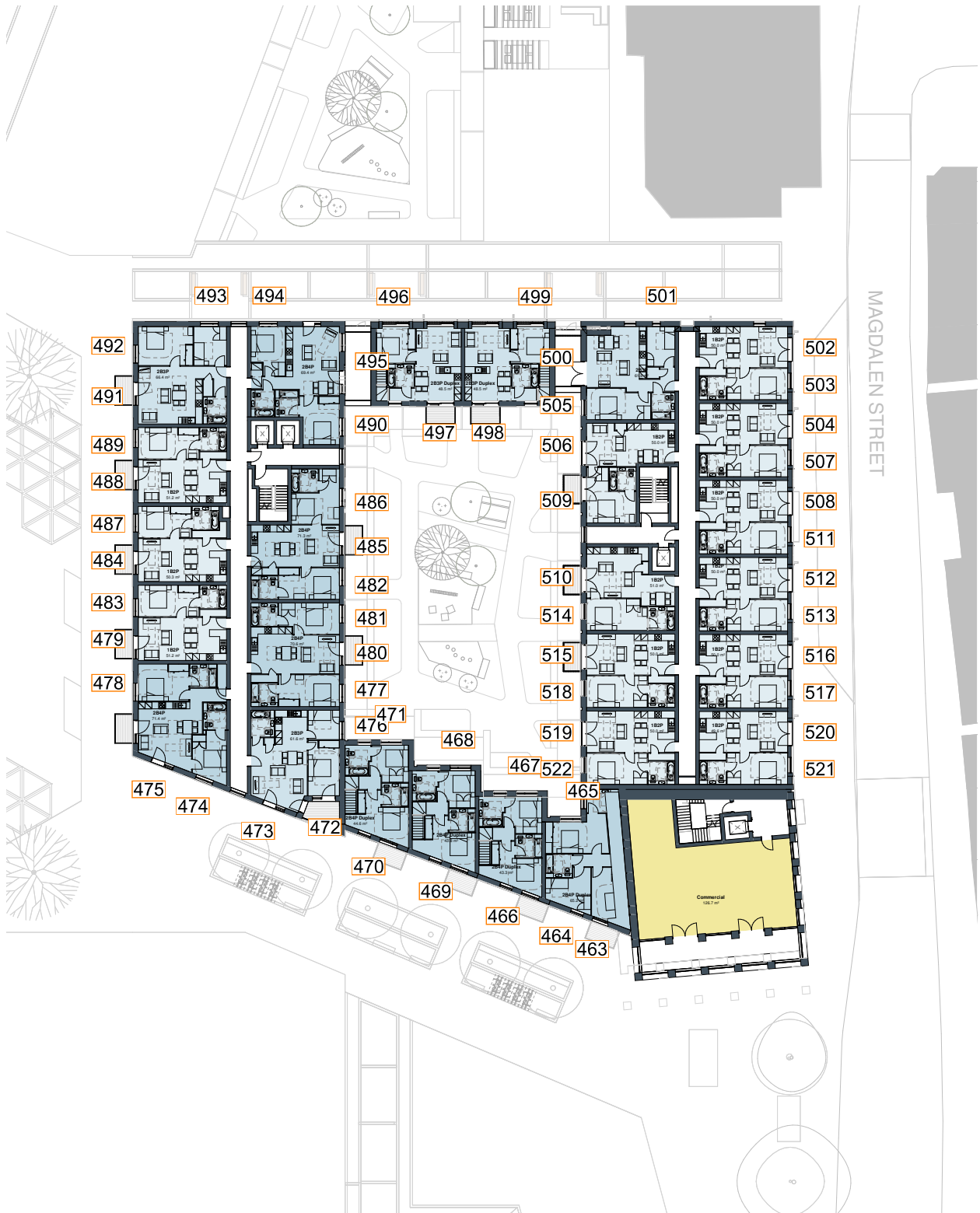


Fig. 24: Floor Plan



Block KL

Level 03 - continued

ROOM REF.	ROOM USE	DAYLIGHT QUANTUM	DAYLIGHT DISTRIBUTION		SUNLIGHT QUANTUM	
		ADF (%)	NSL (%)	RDC	ANNUAL	WINTER
517	Bedroom	2.3	99	MET	43	11
518	Bedroom	1.9	42	MET	26	5
519	L/K/D	1.8	47	MET	26	4
520	L/K/D	1.9	100	MET	48	14
521	Bedroom	2.3	99	MET	40	9
522	Bedroom	1.8	52	MET	21	1

Table 24: Assessment Data



Fig. 25: Floor Plan



Block M

Level 01

ROOM REF.	ROOM USE	DAYLIGHT QUANTUM	DAYLIGHT DISTRIBUTION		SUNLIGHT QUANTUM	
		ADF (%)	NSL (%)	RDC	ANNUAL	WINTER
BLOCK M - LEVEL 01						
523	Bedroom	4.6	99	MET	8	0
524	L/K/D	2.1	95	N/A	11	0
525	Bedroom	0.8	40	MET	3	0
526	L/K/D	0.6	14	MET	4	0
527	Bedroom	0.8	23	MET	2	0
528	Bedroom	1	31	MET	2	0
529	L/K/D	0.4	12	N/A	4	0
530	Bedroom	0.8	28	MET	2	0

Table 25: Assessment Data

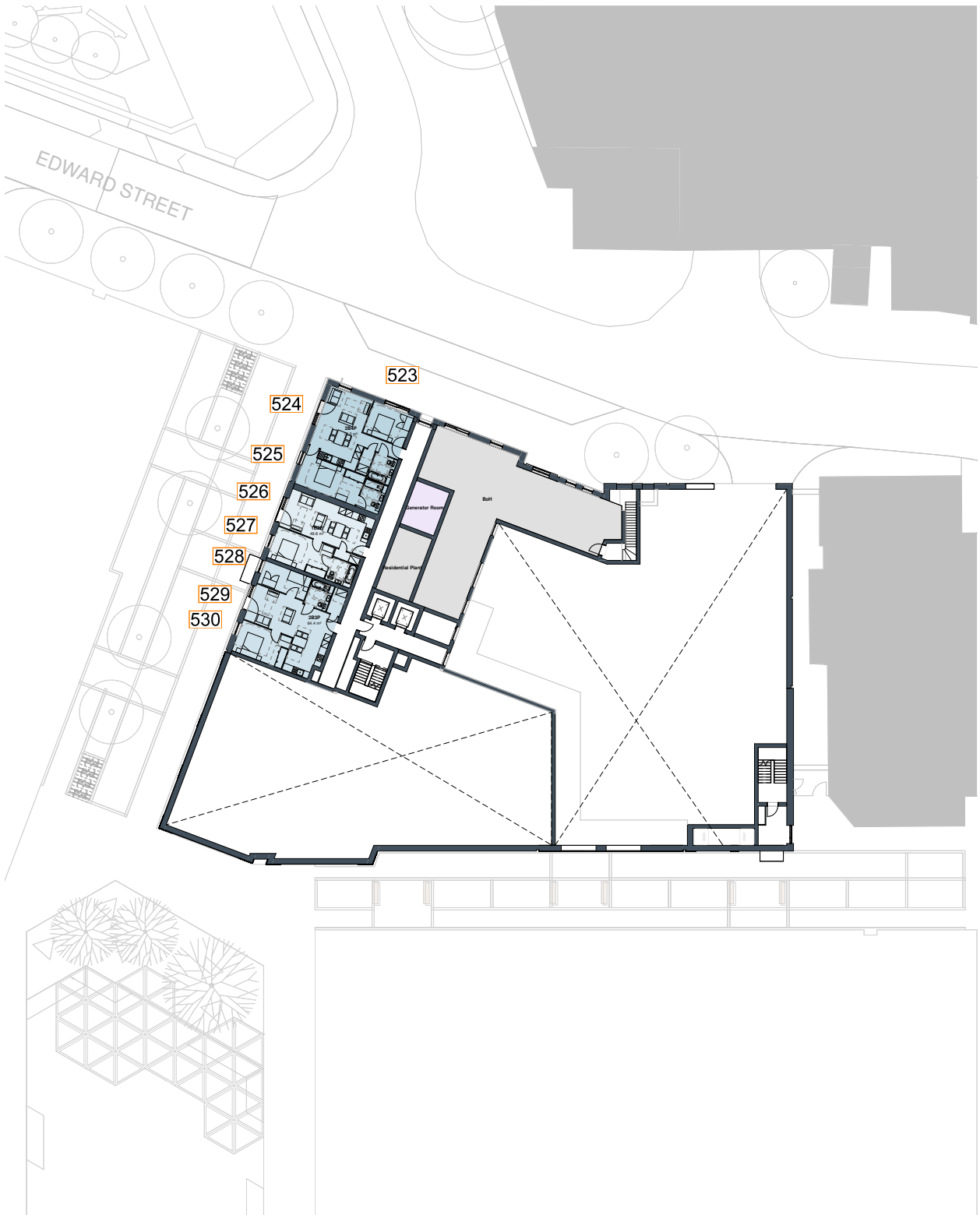


Fig. 26: Floor Plan



Block M

Level 02

ROOM REF.	ROOM USE	DAYLIGHT QUANTUM	DAYLIGHT DISTRIBUTION		SUNLIGHT QUANTUM	
		ADF (%)	NSL (%)	RDC	ANNUAL	WINTER
BLOCK M - LEVEL 02						
531	Bedroom	4.5	99	MET	8	0
532	L/K/D	2.4	95	N/A	15	0
533	Bedroom	0.9	43	MET	5	0
534	L/K/D	0.9	28	MET	8	0
535	Bedroom	0.9	36	MET	3	0
536	Bedroom	1.2	50	MET	2	0
537	L/K/D	0.8	23	N/A	6	0
538	Bedroom	0.9	48	MET	2	0
539	Bedroom	0.6	20	MET	1	0
540	L/K/D	0.6	18	MET	6	0
541	Bedroom	0.6	15	MET	2	0
542	L/K/D	2.1	76	N/A	40	17
543	Bedroom	2.7	97	MET	46	14
544	L/K/D	1.9	98	N/A	54	12
545	Bedroom	2.5	98	MET	29	2
546	Bedroom	2.6	99	MET	35	3
547	L/K/D	2	93	MET	39	4
548	Bedroom	2.9	94	MET	40	6
549	Bedroom	2.6	95	MET	40	9
550	L/K/D	2	96	MET	45	13
551	L/K/D	1	59	N/A	39	15
552	Bedroom	3.6	99	MET	8	0
553	Bedroom	2.4	93	MET	5	0
554	Bedroom	3.3	96	MET	6	0
555	L/K/D	3.4	99	N/A	49	17
556	L/K/D	3.2	100	N/A	63	16
557	L/K/D	3.1	99	N/A	62	13
558	L/K/D	3.1	99	N/A	59	11
559	L/K/D	2.5	72	MET	23	4
560	L/K/D	2.5	84	MET	24	3

Table 26: Assessment Data



Fig. 27: Floor Plan



Block M

Level 03

ROOM REF.	ROOM USE	DAYLIGHT QUANTUM	DAYLIGHT DISTRIBUTION		SUNLIGHT QUANTUM	
		ADF (%)	NSL (%)	RDC	ANNUAL	WINTER
BLOCK M - LEVEL 03						
561	Bedroom	4.5	99	MET	8	0
562	L/K/D	2.9	96	N/A	20	0
563	Bedroom	1.1	52	MET	9	0
564	L/K/D	1.2	68	MET	13	0
565	Bedroom	1.1	88	MET	6	0
566	Bedroom	1.6	98	MET	3	0
567	L/K/D	0.8	55	N/A	9	0
568	Bedroom	1.1	84	MET	4	0
569	Bedroom	0.8	26	MET	1	0
570	L/K/D	0.7	24	MET	10	1
571	Bedroom	0.6	18	MET	5	0
572	L/K/D	2.3	84	N/A	45	17
573	Bedroom	2.9	97	MET	51	17
574	L/K/D	2.1	99	N/A	68	16
575	Bedroom	2.7	98	MET	35	3
576	Bedroom	2.7	99	MET	40	4
577	L/K/D	1.9	99	MET	37	8
578	Bedroom	3.1	94	MET	42	8
579	Bedroom	2.8	96	MET	46	11
580	L/K/D	2	100	MET	40	15
581	Bedroom	1.4	78	MET	37	12
582	Bedroom	4.5	99	MET	8	0
583	L/K/D	3.4	99	MET	46	13
584	Bedroom	3.4	97	MET	2	0
585	Bedroom	3.3	93	MET	70	23
586	Bedroom	2.9	91	MET	69	21
587	Bedroom	3.5	97	MET	2	0
588	Bedroom	3.5	98	MET	2	0
589	Bedroom	3.2	93	MET	69	21
590	Bedroom	2.8	72	MET	26	4
591	Bedroom	4.5	93	MET	30	7
592	Bedroom	3.4	84	MET	29	5
593	Bedroom	3.5	94	MET	25	4
594	Bedroom	4.8	100	MET	73	18

Table 27: Assessment Data



Fig. 28: Floor Plan



8 DAYLIGHT & SUNLIGHT POTENTIAL

8.1 DAYLIGHT POTENTIAL ASSESSMENTS

VSC FAÇADE ASSESSMENT - BLOCK E, E/F, H

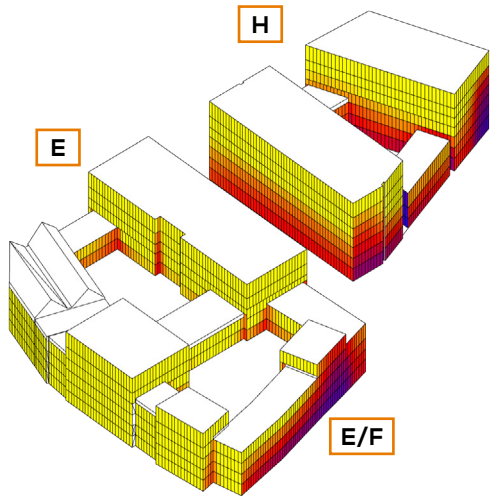


Fig. 29: Daylight Potential - view 1

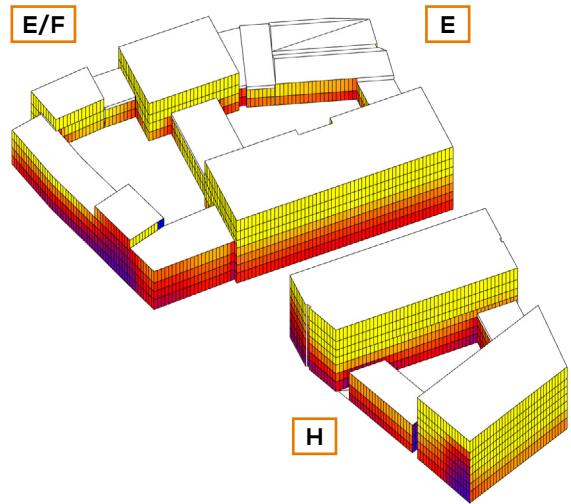


Fig. 30: Daylight Potential - view 2

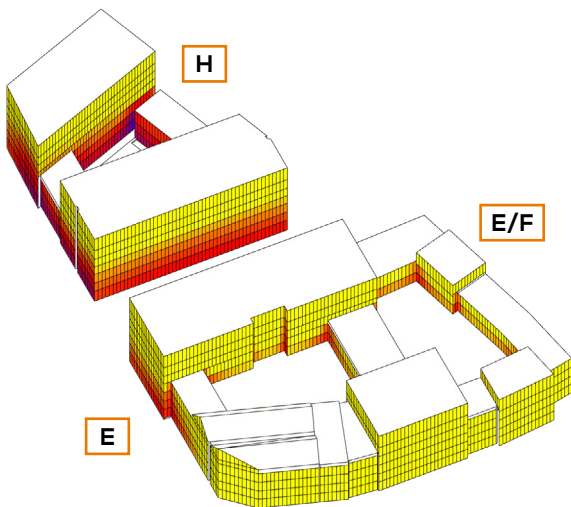


Fig. 31: Daylight Potential - view 3

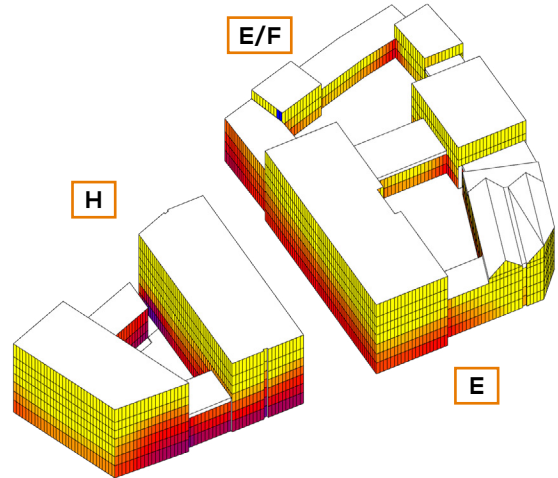
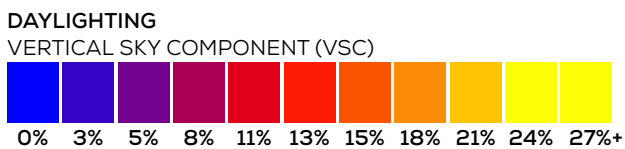


Fig. 32: Daylight Potential - view 4



VSC FAÇADE ASSESSMENT - BLOCK F, G, J

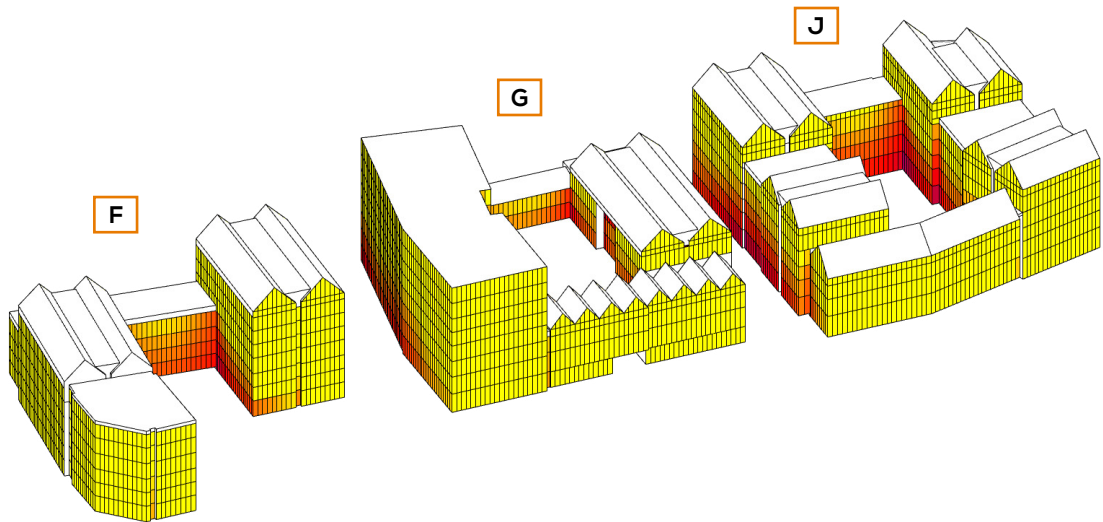


Fig. 33: Daylight Potential - view 1

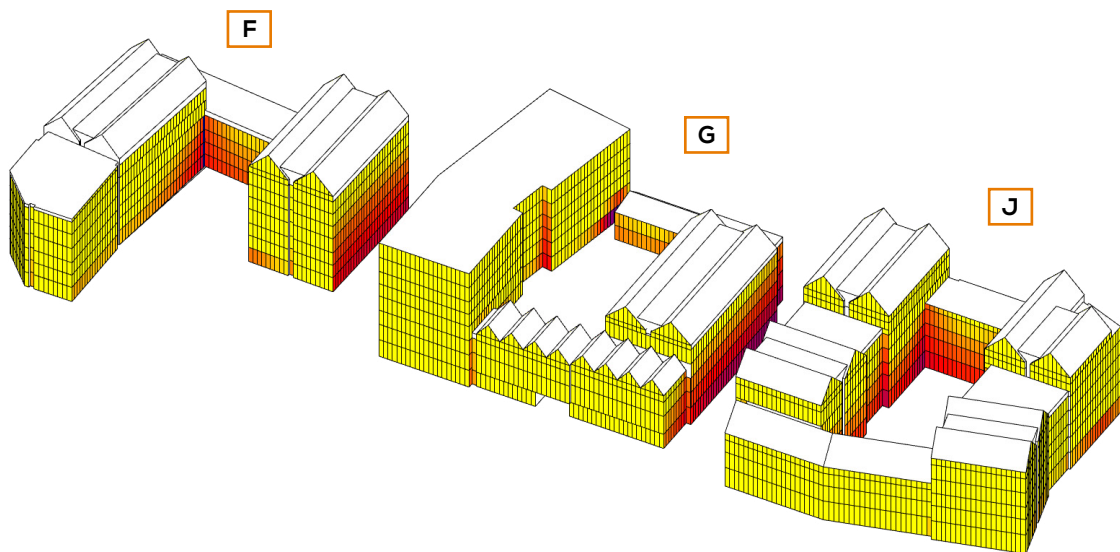
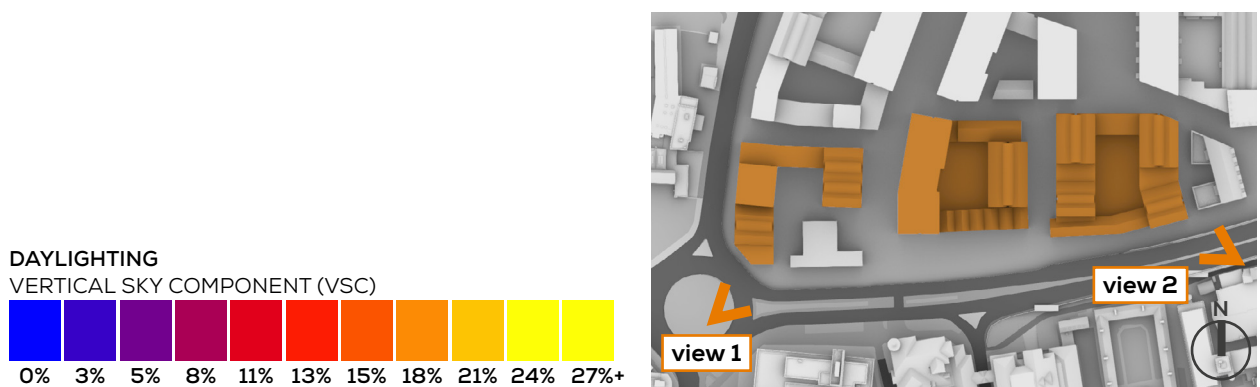


Fig. 34: Daylight Potential - view 2



VSC FAÇADE ASSESSMENT - BLOCK F, G, J

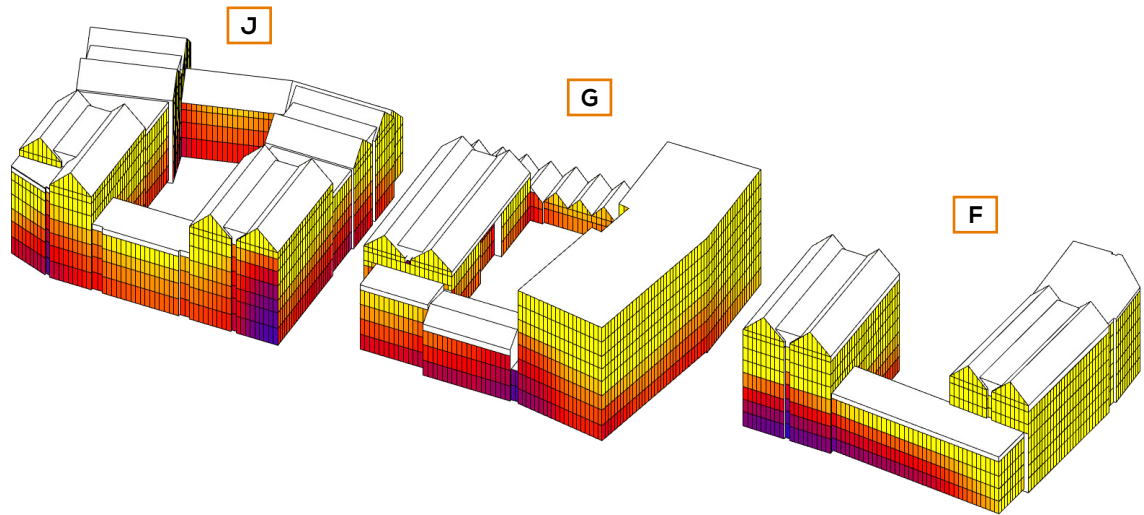


Fig. 35: Daylight Potential - view 3

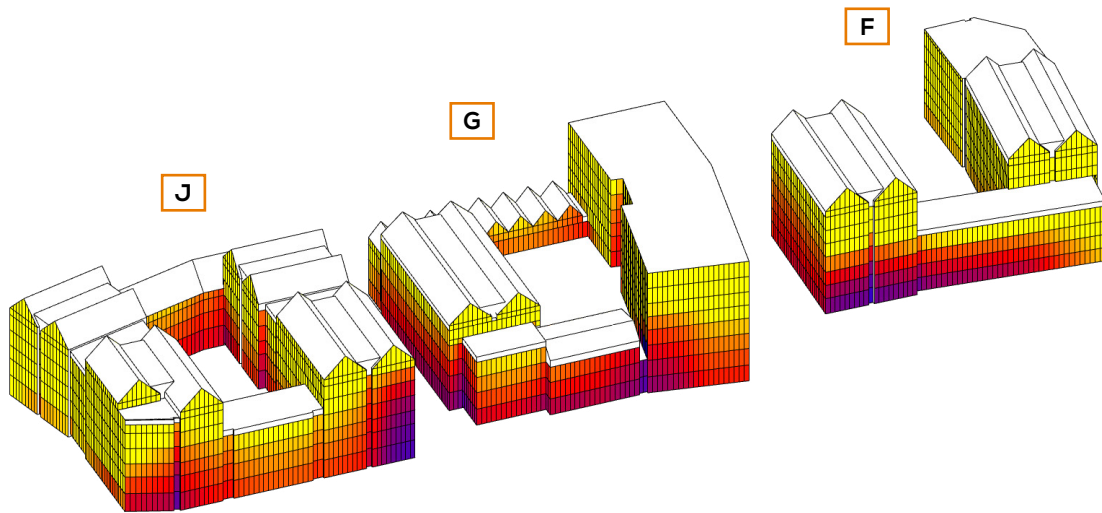
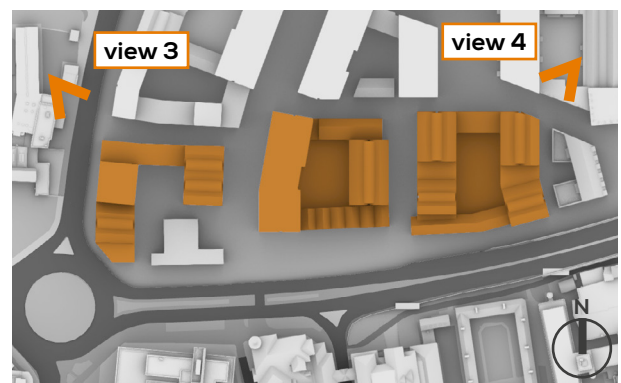
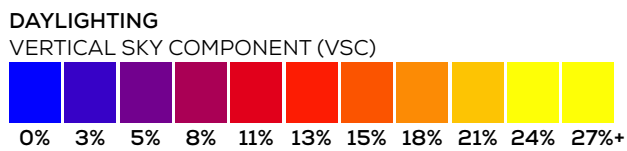


Fig. 36: Daylight Potential - view 4



8.2 SUNLIGHT POTENTIAL ASSESSMENTS

PSH FAÇADE ASSESSMENT - BLOCK E, E/F, H

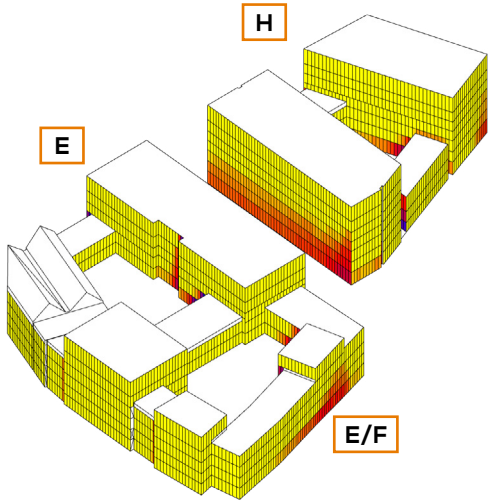


Fig. 37: Annual Probable Sunlight Hours - view 1

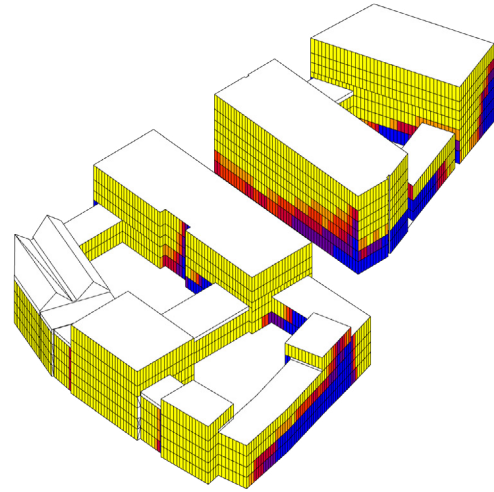


Fig. 38: Winter Probable Sunlight Hours - view 1

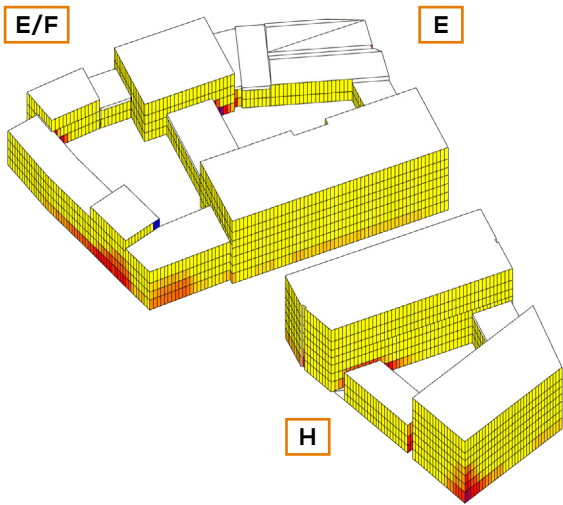


Fig. 39: Annual Probable Sunlight Hours - view 2

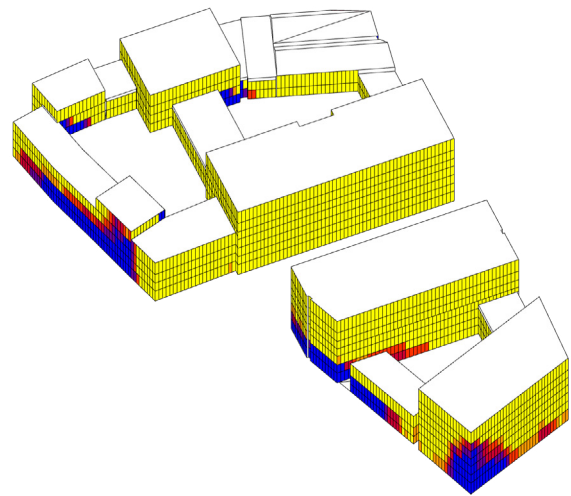
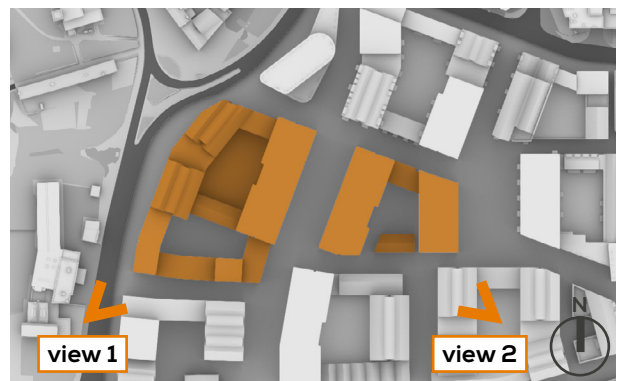
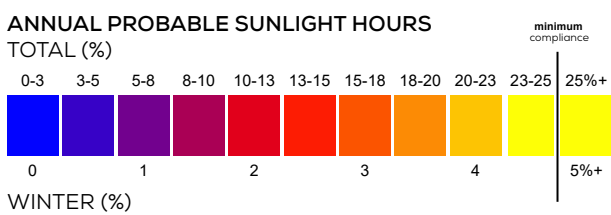


Fig. 40: Winter Probable Sunlight Hours - view 2



PSH FAÇADE ASSESSMENT - BLOCK F, G, J

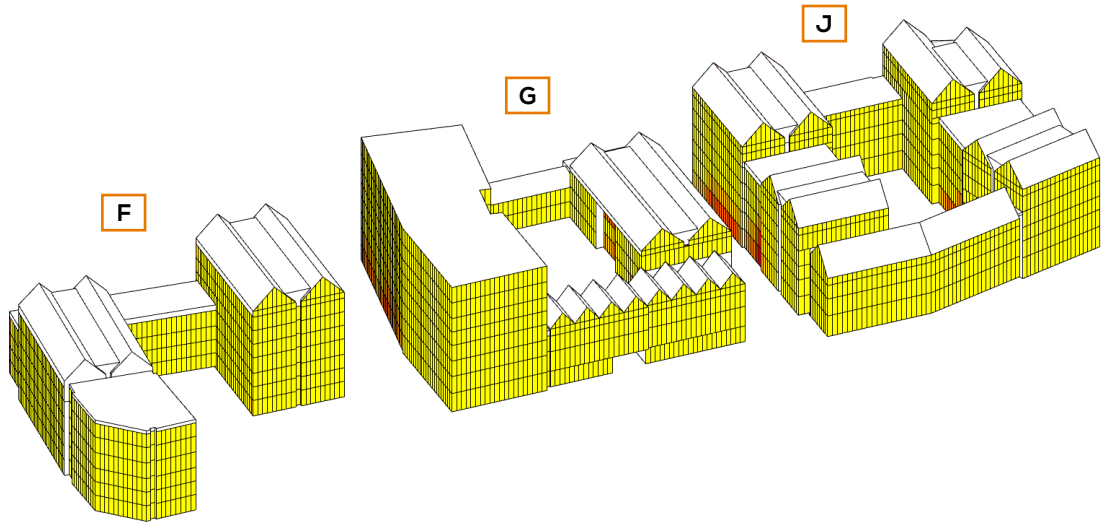


Fig. 41: Annual Probable Sunlight Hours

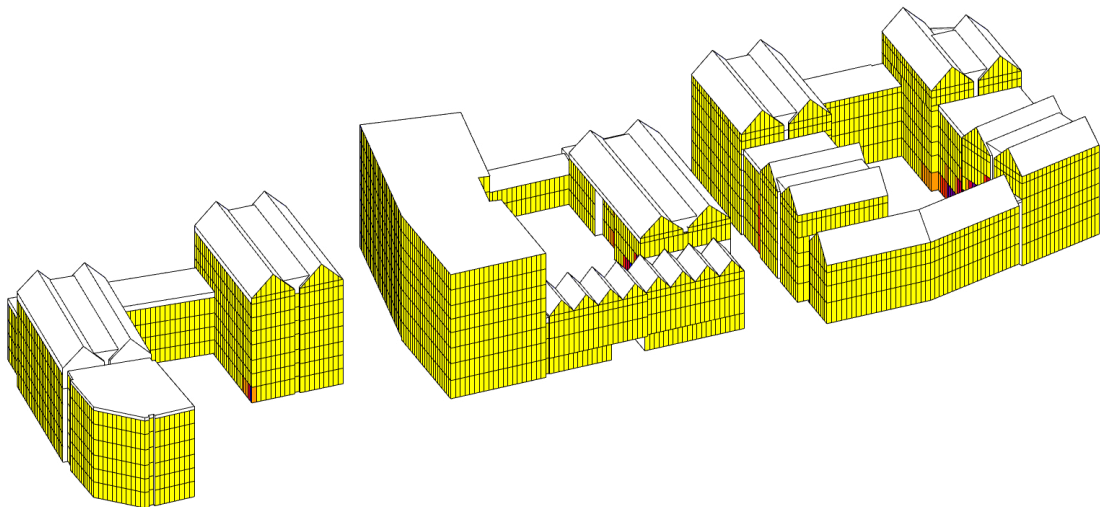
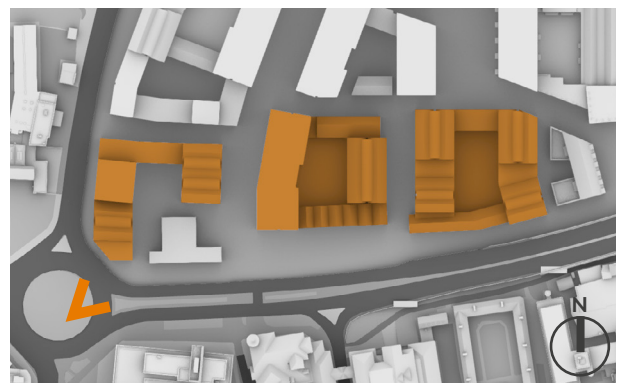
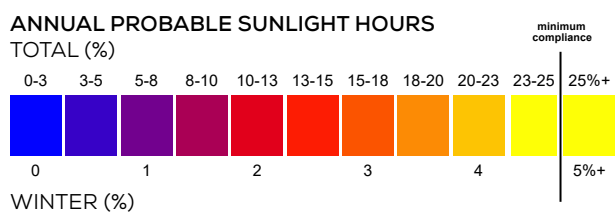


Fig. 42: Winter Probable Sunlight Hours



PSH FAÇADE ASSESSMENT - BLOCK F, G, J

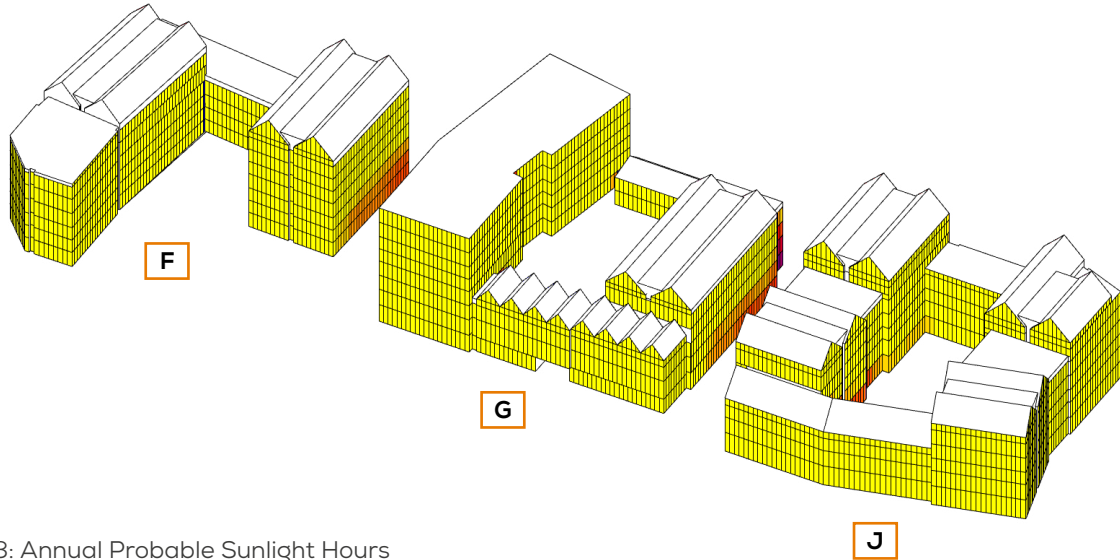


Fig. 43: Annual Probable Sunlight Hours

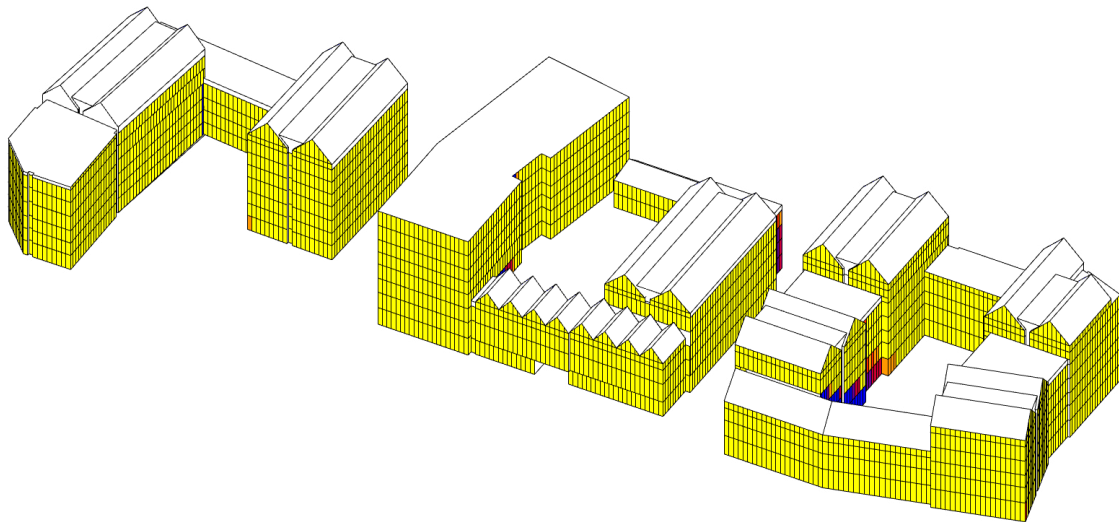
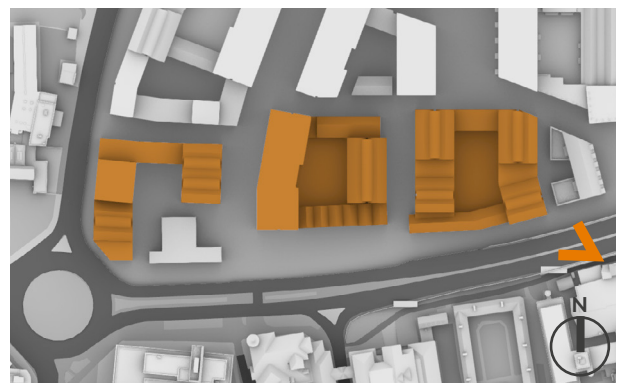
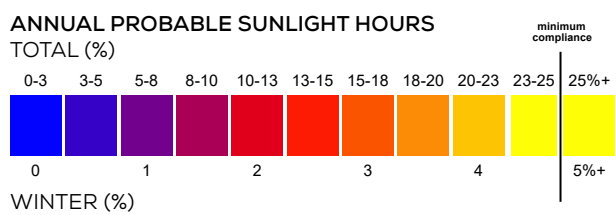
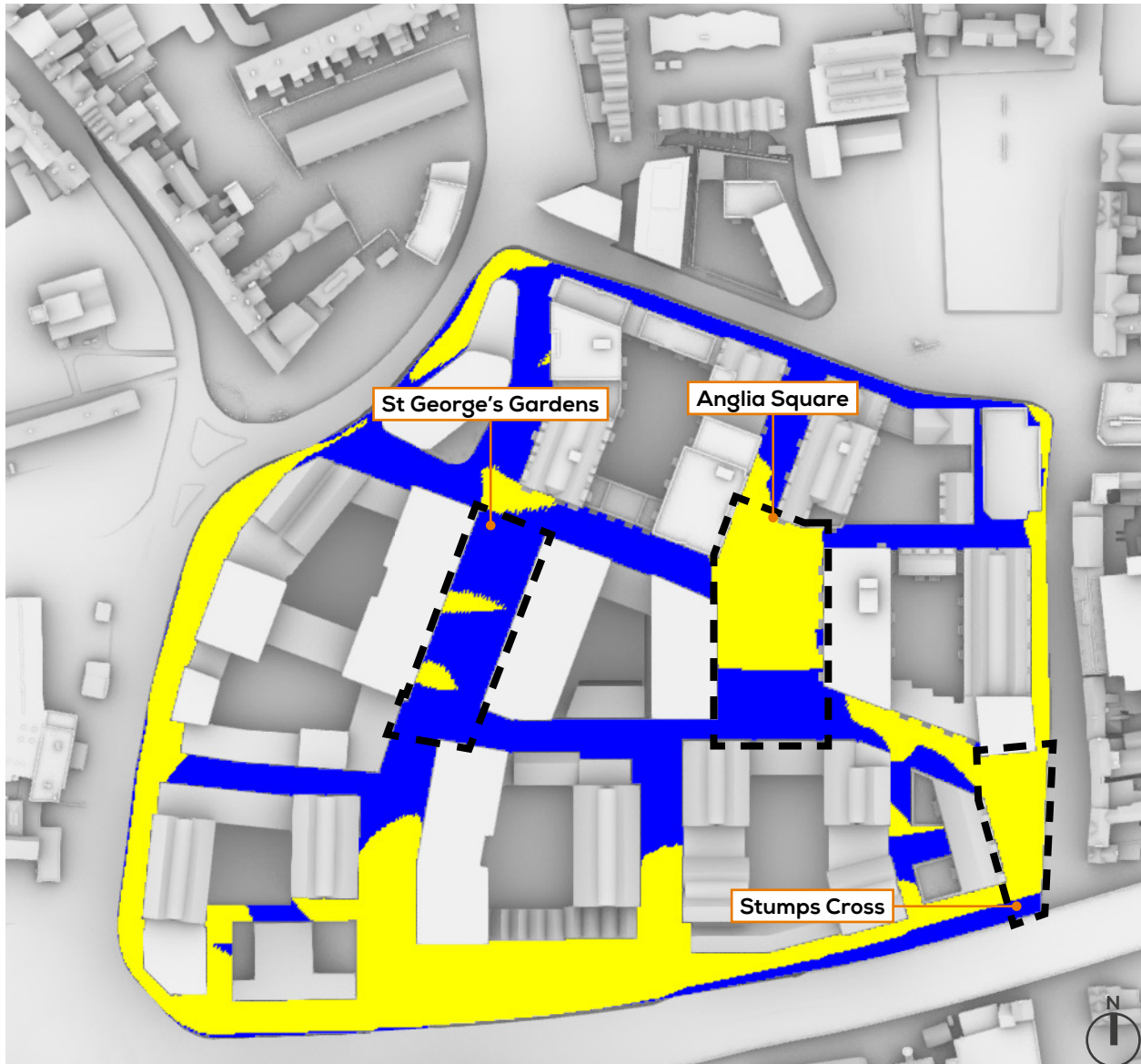


Fig. 44: Winter Probable Sunlight Hours



9 OVERSHADOWING ASSESSMENTS

OVERSHADOWING ASSESSMENT - PUBLIC OPEN SPACE SUN HOURS ON GROUND - BRE TEST (21ST MARCH)



(BRE RECOMMENDS 2+ HOURS OF SUNLIGHT ON 21ST MARCH FOR AT LEAST 50% OF THE OPEN SPACE)

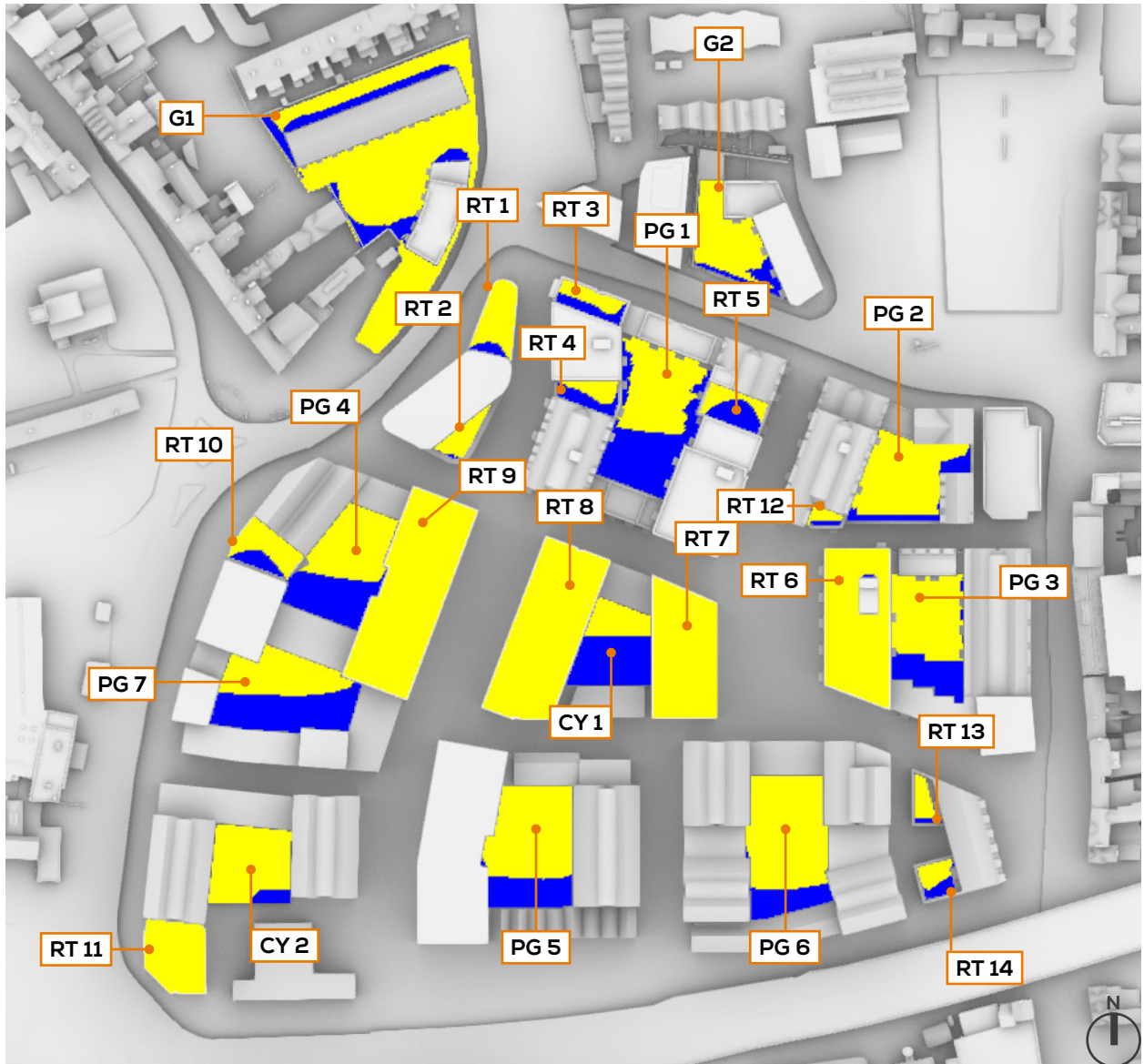
ST GEORGE GARDENS: 11%
ANGLIA SQUARE: 66%
STUMP CROSS: 93%

OVERALL PUBLIC OPEN SPACE: 51%

SUN HOURS ON GROUND
BRE TEST - 21ST MARCH



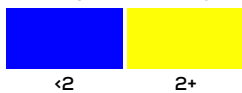
OVERSHADOWING ASSESSMENT - ROOF TERRACE/ PODIUM GARDEN/ COURTYARD
 SUN HOURS ON GROUND - BRE TEST (21ST MARCH)



(BRE RECOMMENDS 2+ HOURS OF SUNLIGHT ON 21ST MARCH FOR AT LEAST 50% OF THE OPEN SPACE)

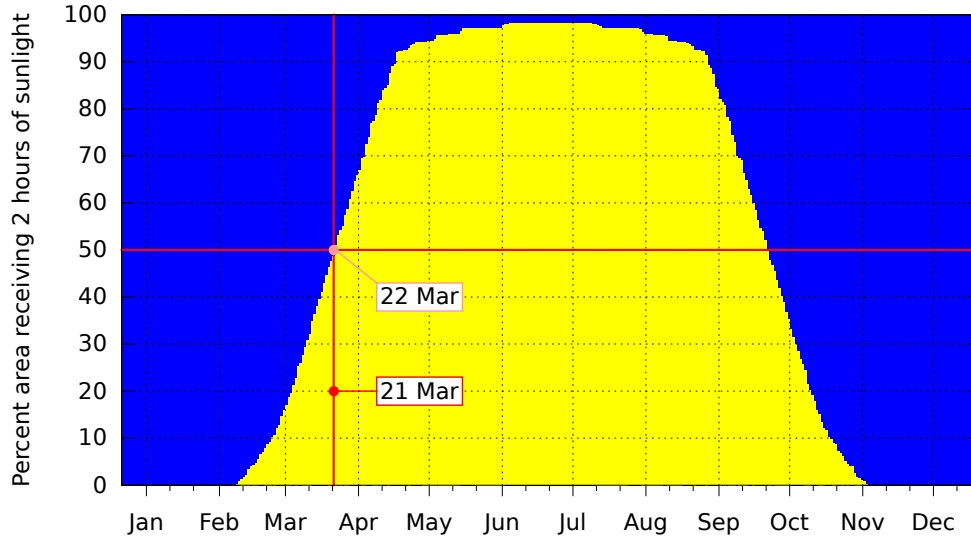
RT 1: 87%	RT 8: 100%	PG 1: 51%	CY 1: 33%	G1: 84%
RT 2: 93%	RT 9: 100%	PG 2: 83%	CY 2: 92%	G2: 81%
RT 3: 56%	RT 10: 72%	PG 3: 70%		
RT 4: 49%	RT 11: 100%	PG 4: 57%		
RT 5: 46%	RT 12: 72%	PG 5: 74%		
RT 6: 100%	RT 13: 83%	PG 6: 80%		
RT 7: 100%	RT 14: 60%	PG 7: 46%		

SUN HOURS ON GROUND
 BRE TEST - 21ST MARCH

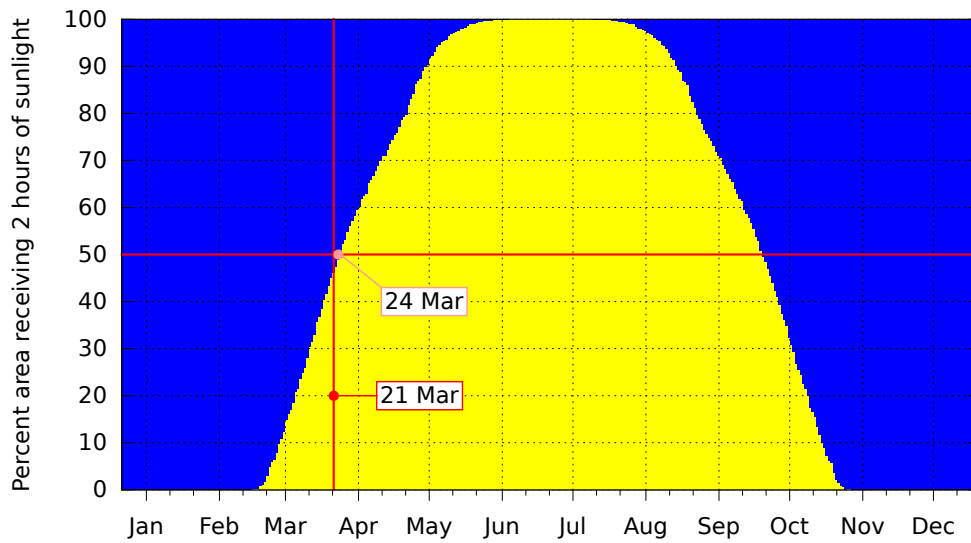


OVERSHADOWING ASSESSMENT
SUN HOURS ON GROUND - BRE TEST (21ST MARCH)

17841 - Sun Hours on the Ground - Area RT 4 (Rooftop Block A)

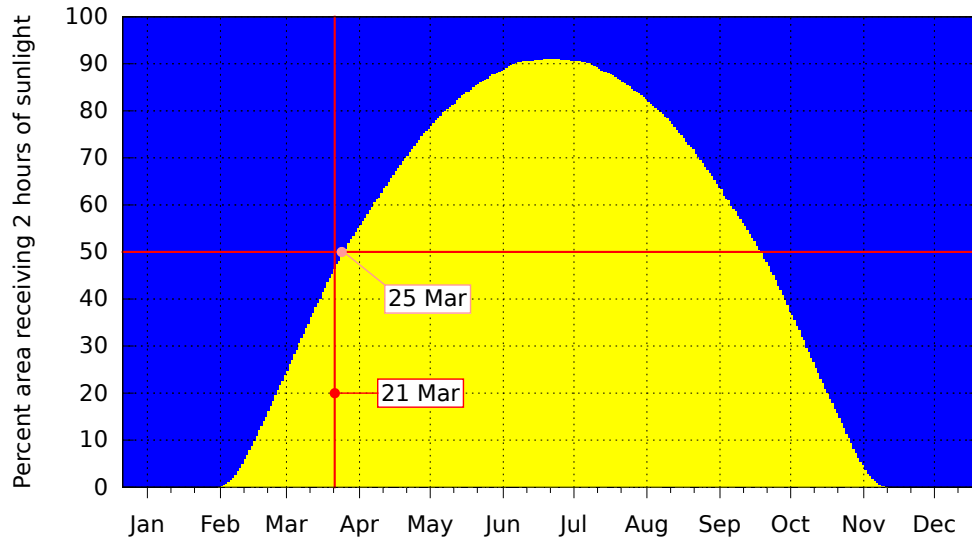


17841 - Sun Hours on the Ground - Area RT 5 (Rooftop Block A)

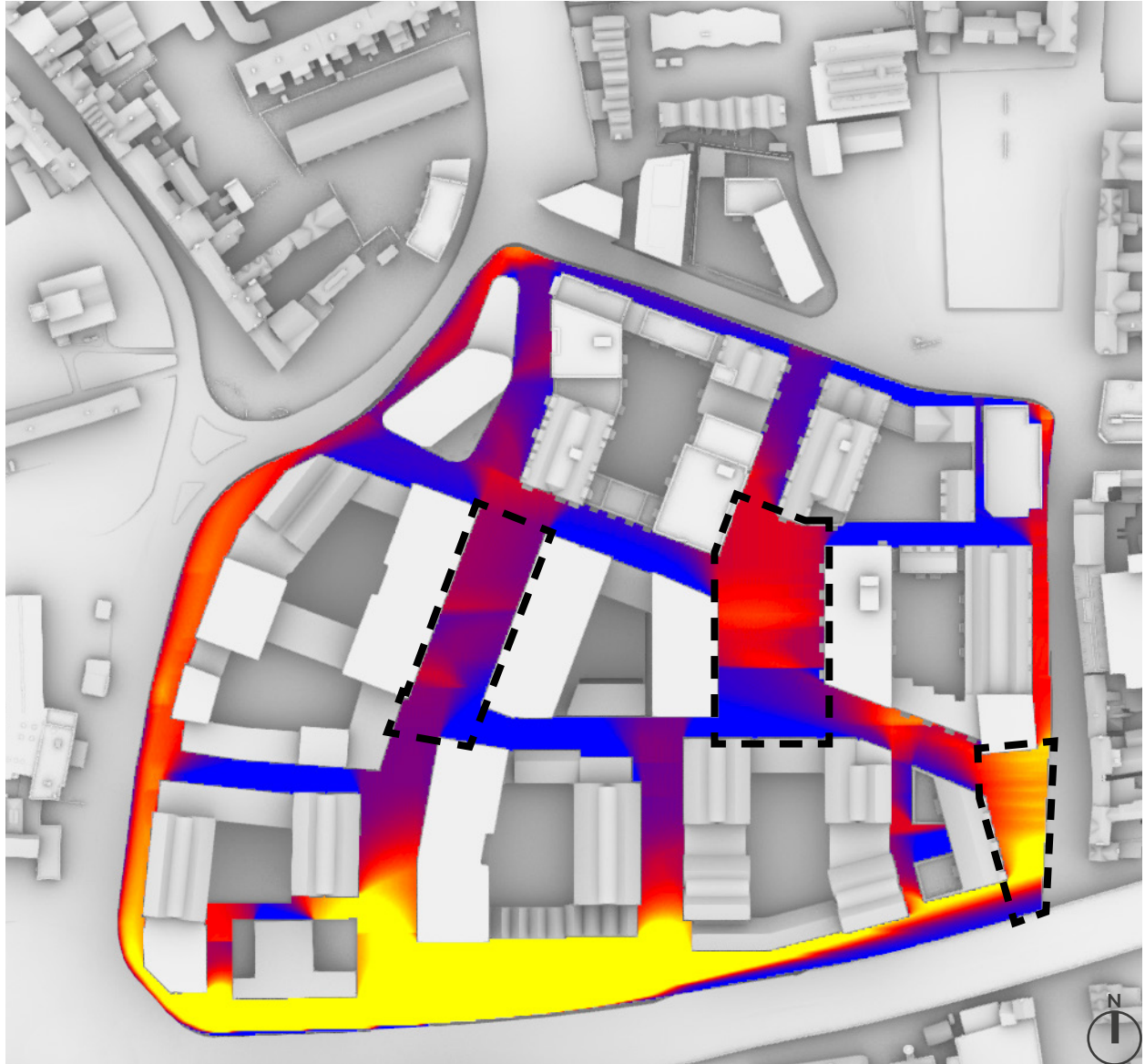


OVERSHADOWING ASSESSMENT
SUN HOURS ON GROUND - BRE TEST (21ST MARCH)

17841 - Sun Hours on the Ground - Area PG 7 (Podium Garden Block EF)



OVERSHADOWING ASSESSMENT - PUBLIC OPEN SPACE
 SUN EXPOSURE ON GROUND - 21ST MARCH



SUN EXPOSURE
 TOTAL HOURS



21st MARCH
 (SPRING EQUINOX)

NORWICH

Latitude: 52.6
 Longitude: 1.3
 Sunrise: 05:55 GMT
 Sunset: 18:09 GMT

Total Available Sunlight:
 12hrs 14mins

**OVERSHADOWING ASSESSMENT - ROOF TERRACE/ PODIUM GARDEN/ COURTYARD
SUN EXPOSURE ON GROUND - 21ST MARCH**



**SUN EXPOSURE
TOTAL HOURS**



**21st MARCH
(SPRING EQUINOX)**

NORWICH

Latitude: 52.6

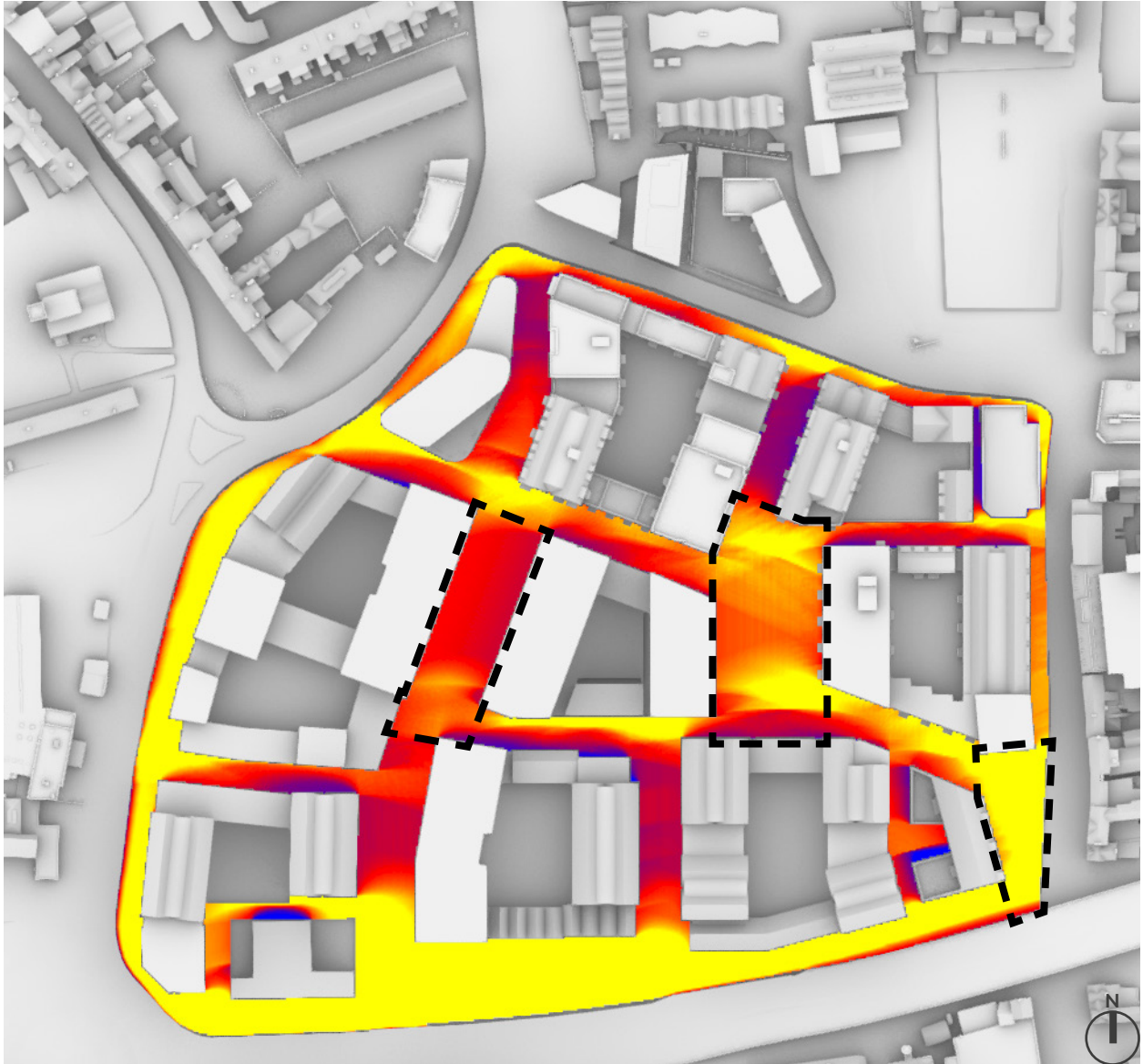
Longitude: 1.3

Sunrise: 05:55 GMT

Sunset: 18:09 GMT

**Total Available Sunlight:
12hrs 14mins**

OVERSHADOWING ASSESSMENT - PUBLIC OPEN SPACE
SUN EXPOSURE ON GROUND - 21ST JUNE



SUN EXPOSURE
TOTAL HOURS



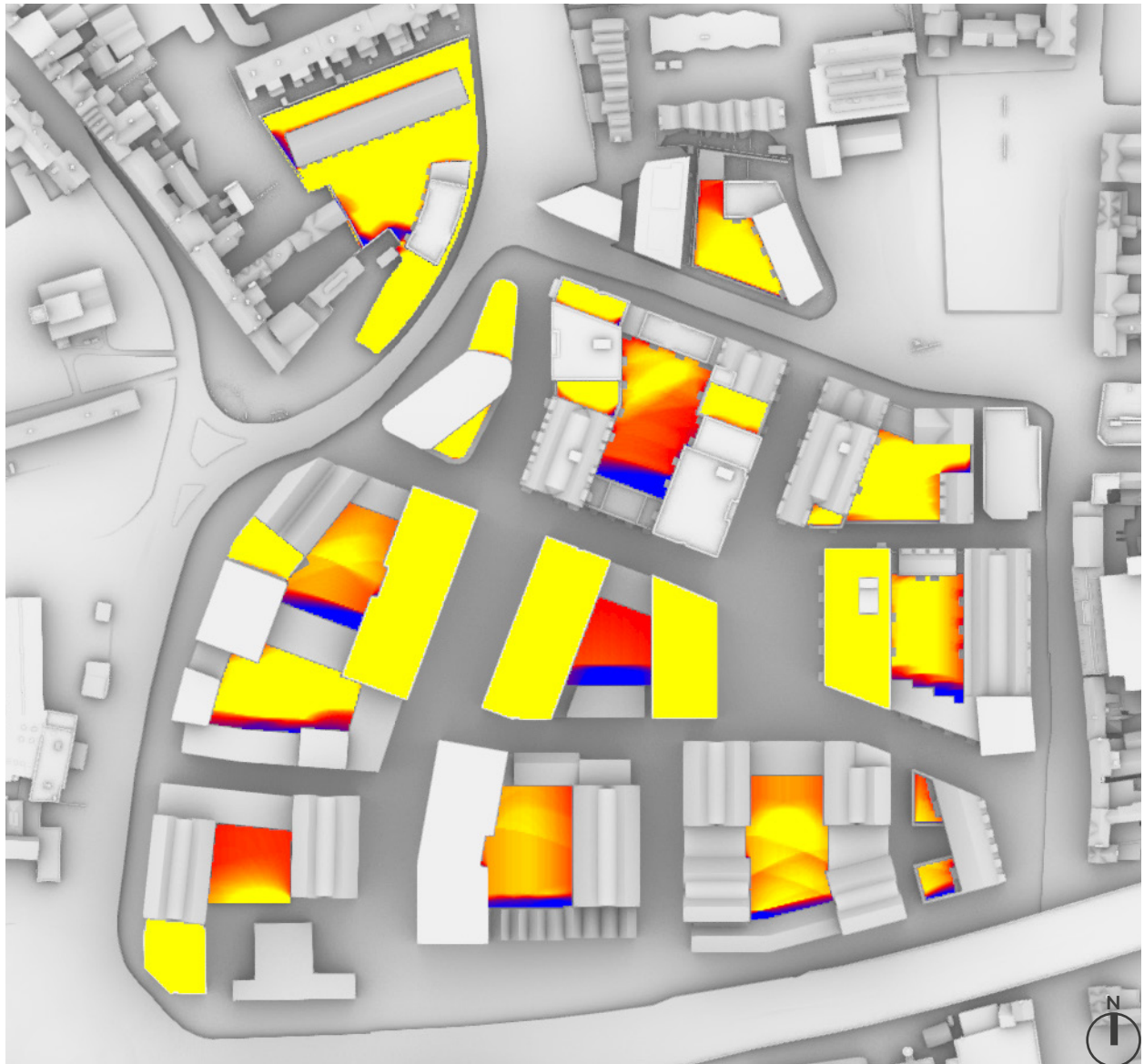
21st JUNE
(SUMMER SOLSTICE)

NORWICH

Latitude: 52.6
 Longitude: 1.3
 Sunrise: 04:30 GMT
 Sunset: 21:22 GMT

Total Available Sunlight:
 16hrs 51mins

**OVERSHADOWING ASSESSMENT - ROOF TERRACE/ PODIUM GARDEN/ COURTYARD
SUN EXPOSURE ON GROUND - 21ST JUNE**



**SUN EXPOSURE
TOTAL HOURS**



**21st JUNE
(SUMMER SOLSTICE)**

NORWICH

Latitude: 52.6

Longitude: 1.3

Sunrise: 04:30 GMT

Sunset: 21:22 GMT

**Total Available Sunlight:
16hrs 51mins**



For further details please contact us on:

LONDON

T 020 7202 1400

E mail@gia.uk.com

The Whitehouse
Belvedere Road
London SE1 8GA

MANCHESTER

T 0161 672 5100

E manchester@gia.uk.com

2 Commercial Street
Manchester
M15 4RQ

BELFAST

T 02892 449 674

E belfast@gia.uk.com

River House
48-60 High Street
Belfast BT1 2BE

BRISTOL

T 0117 374 1504

E bristol@gia.uk.com

33 Bristol
Colston Avenue
Bristol BS1 4UA

DUBLIN

T 020 7202 1400

E hello@giasurveyors.ie

77 Lower Camden Street
Dublin Ireland
D02 XE80