

Norfolk County Council proposes to make a Temporary Traffic Regulation Order (the "Order") (CTRO1364) affecting the Netherwood Green Footpath From Rear Of 99 To West Side Of 50 from 14 metres southeast of its junction with Netherwood Green for 10 metres south-eastwards (the "Footpath") in the City of Norwich to facilitate new water connection works. The Footpath will be temporarily closed/restricted for the duration of the works/period the closure is necessary which is anticipated to be from 17th to 19th December 2025, but may continue to be closed/restricted until the 30th January 2026 where the closure/restriction is still required beyond the anticipated dates.

Alternative route is via: Netherwood Green Footpath From Rear Of 99 To West Side Of 50, Netherwood Green Footpath From West Side Of 99 To North Side Of 105, Netherwood Green and vice versa.

The works promoter for this restriction/closure is: Anglian Water.

The Order shall automatically revoke on the completion of the works/when the closure/restriction is no longer necessary or otherwise on the 30th January 2026 without further notice.

If necessary, the restriction could run for a maximum period of 6 months from the date the Order is effective.

A person who contravenes, or who uses the Footpath in contravention of the closure imposed by the Order shall be guilty of an offence.

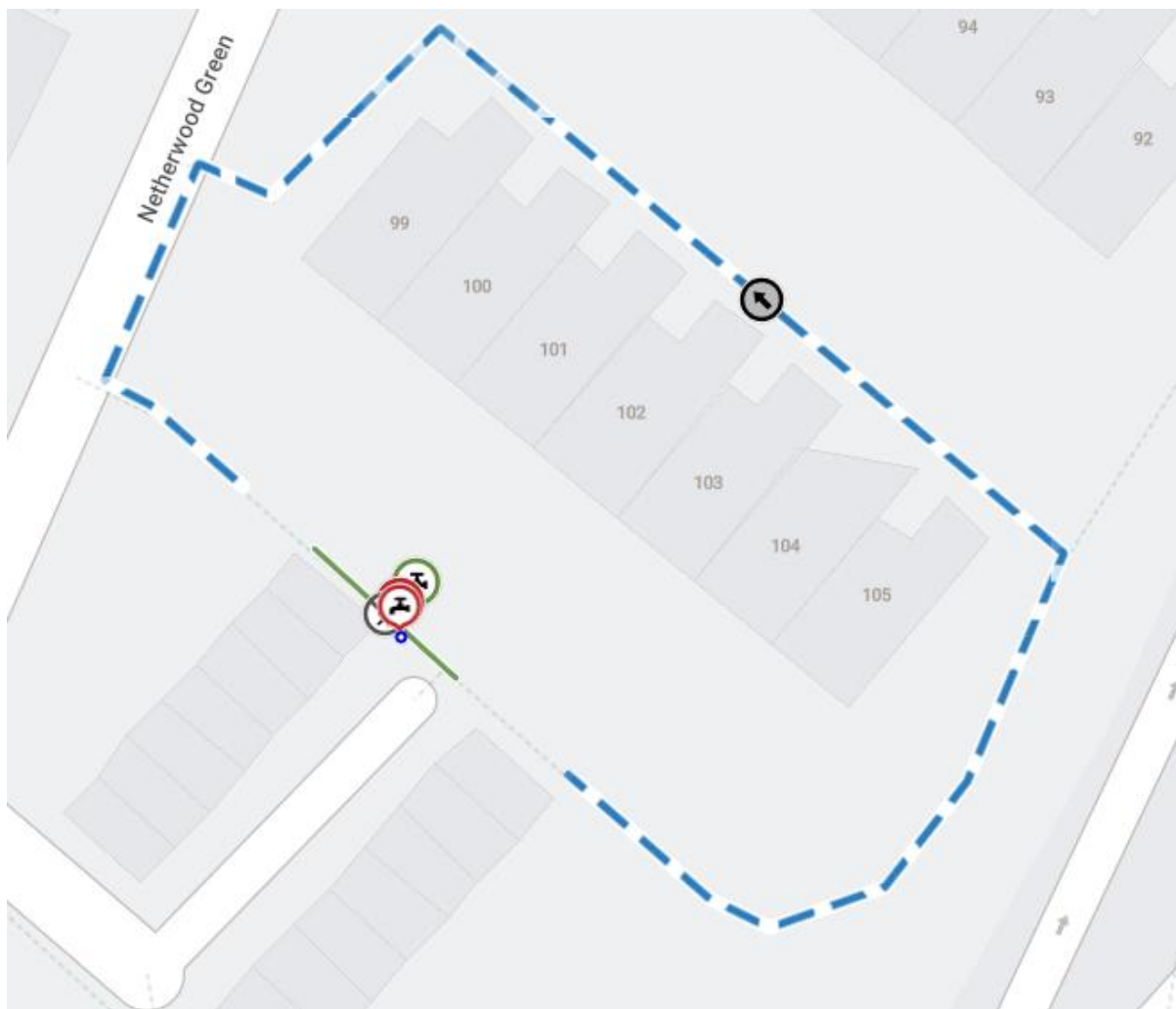
Penalty: £1000 maximum fine on conviction and/or endorsement for contravention.

In the event of the start date being delayed the new start date will be displayed on site in advance.

Full details on the closure are available at <https://one.network>. Any enquiries that cannot be answered on the one.network website should be directed to the City Area Streetworks (Infrastructure Department) contactable by telephone at 0344 800 8020 or email at streetworks@norfolk.gov.uk

Dated this 5th day of December 2025.

Katrina Hulatt
Director of Legal Services (nplaw)
County Hall
Martineau Lane
Norwich
NR1 2DH



Imagery © 2025 MapTiler | Imagery © 2025 Hexagon | © MapTiler © OpenStreetMap contributors